

2008 CABO 40 EXPRESS - CABO YACHTS



Builder: [Cabo Yachts](#)

Beam: 15' 0" (4.78 m)

Year Built: 2008

Min Draft: 11' 3" (3.42 m)

Model: 40 Express

Price: \$399,000 USD Subject to change.

[See full listing on our website](#)

Location: San Diego, United States

LOA: 40' 0" (12.19 m)

TABLE OF CONTENTS

OVERVIEW 3

SPECIFICATIONS 4

 Basic Information 4

 Dimensions 4

 Speed, Capacities and Weight 4

 Accommodations 4

 Hull and Deck Information 5

 Engine Information 5

GALLERY 6

DETAILED DESCRIPTION 13

CONTACTS 18

OVERVIEW

Commissioned in 2008, the Cabo 40 Express stands among the premier sportfishing yachts, blending robust construction with a deliberately engineered layout that serves avid anglers and leisurely cruisers with equal refinement. Celebrated for its bluewater confidence and notable seaworthiness, its deep-V hull cleaves through chop to provide a dry, controlled ride when offshore conditions grow sporty. Meticulously maintained, this Express Cruiser pairs the comforts of home with tournament-level Sportfish capability, fully prepared to pursue gamefish and run to the billfish grounds with genuine offshore poise.

SPECIFICATIONS

Basic Information

Category:
Motor yachts

Year Built:
2008

Sub category:
Sport Fisherman

Country:
United States

Model Year:
2008

Dimensions

LOA:
40' 0" (12.19 m)

Beam:
15' 0" (4.78 m)

Min Draft:
11' 3" (3.42 m)

Speed, Capacities and Weight

Water Capacity:
95 Gallons

Fuel Capacity:
550 Gallons

Accommodations

Total Heads:
1

Hull and Deck Information

Hull Material:

Fiberglass and Plastic Yachts

Hull Designer:

N/A

Deck Material:

Fiberglass

Interior Designer:

N/A

Hull Configuration:

N/A

Engine Information

Engines:

2

Fuel Type:

Diesel

Manufacturer:

MAN

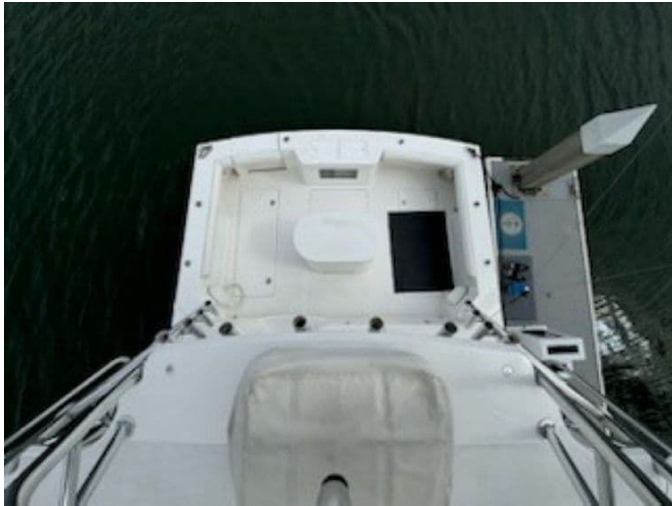
GALLERY

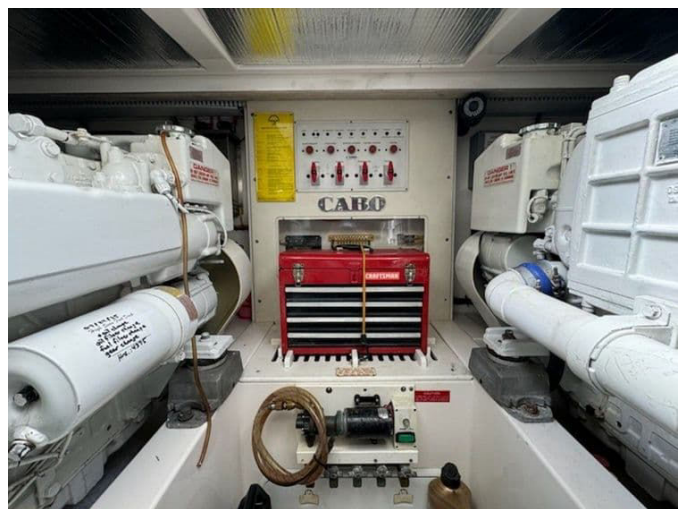














DETAILED DESCRIPTION

Description

The 2008 Cabo 40 Express stands as a premier sportfishing machine, revered for its "bulletproof" construction, deep V hull, and a highly functional deck plan that serves both hardcore angling and effortless family cruising, delivering a remarkably dry, stable ride and true offshore seaworthiness that instills confidence when conditions turn challenging while surrounding you with the creature comforts of home; do not miss the chance to step aboard a very clean Cabo whose fishability rivals the most dedicated tournament sportfishers, yet whose refinement makes every passage a pleasure.

Key features and quick specs

Thoughtfully configured for performance and comfort, this Cabo offers one cabin and one head, sleeping four in climate controlled ease, with a draft of 3'05" and a beam spanning 15'09" set over a substantial 28,000 lbs displacement matched to generous tankage of 550 gallons of fuel and 95 gallons of fresh water, while a bow thruster enhances close quarters control; anglers will appreciate the prep and rigging station, a cockpit center bait tank complemented by a Bluewater cockpit bait tank, a cockpit freezer, and large tackle storage, and a full tower with complete controls and steering works in concert with RUPP outriggers and Furuno touchscreen electronics to elevate the hunt offshore, endurance is assured by a watermaker and ownership simplicity is underscored by an LLC title, with power coming from MAN 800 HP engines showing approximately 3600 hours and supported by a Westerbeke 8 kW generator to keep systems humming at anchor or underway.

Galley

The galley is finished with sleek Corian countertops and equipped for serious onboard cuisine, featuring a two burner electric cooktop and a micro/convection oven, an AC/DC refrigerator/freezer to keep provisions perfectly chilled, while abundant cabinetry and clever compartments swallow dry goods and cookware with ease, ensuring everything is at hand when the bite turns into dinner.

Stateroom

The private stateroom centers on an inviting island V berth, with large storage drawers beneath and a portside hanging locker for neatly stowed attire, natural light and airflow pour through a foredeck hatch with shade and there is direct access to the anchor locker; comforts include a 15" flat screen TV, dedicated rod storage lockers, and efficient AC/heat to tailor the climate to every season.

Head

The well appointed head features a Sealand Vacuflush electric toilet, a vanity with mirror, and Corian countertops that elevate the finish, a separate stall shower offers true home style convenience while a storage cabinet keeps toiletries orderly and out of sight.

Electronics

Command is effortless from the main helm with two Furuno NavNet TZ Touch Black Box 19" screens complemented by a Furuno NavNet TZ 14" display, the suite expands with Furuno 1920C, 1934C, DFFI, BBWXI, and sea surface

temperature sensors, a Furuno Black Box sounder and a Furuno Black Box 4' open array radar for long range target definition, precision steering comes via a Simrad AP70 autopilot at the helm, an RD33 in the tower, and a Simrad AP26 with ACR2 feedback and compass, offshore communications and awareness are elevated by a Seatel 14" Coastal Satellite DSS antenna, two Shakespeare 16' VHF antennas new in 2020, FLIR thermal imaging, two Icom M604 at the helm in the MIC tower, and an ACR2 station spotlight to pierce the night.

Electrical

Power is cleanly managed through 24VDC and 120VAC distribution, with a 50A 125/250V shore power inlet and Glendinning Cable Master for effortless cord handling, an 8 kW Westerbeke generator supplies reliable ship's power underway or on the hook, and practical touches include AC power outlets in the engine room and electric fuel priming pumps to streamline starts after service.

Mechanical

Long range autonomy is supported by a watermaker, while four bilge pumps stand vigilant for safety, electronic engine controls with trolling valves deliver precise low speed maneuvering on the bite, and an oil change system simplifies routine maintenance, hot water is on tap thanks to an 11 gallon water heater, adding a welcome residential touch offshore.

Deck and cockpit

Purpose built for battle and comfort, the deck carries a full tower with controls and steering and a West Coast bow rail for confident movement

forward; in the cockpit a bait prep station and tackle center pair with a 48 gallon center bait tank and an additional Bluewater cockpit bait tank, while a cockpit freezer, large macerated fishboxes in the cockpit deck, and rod/gaff storage to port and starboard keep the spread organized, day to day luxury includes an icemaker in the starboard helm deck cabinet, a hot/cold handheld deck shower, cockpit courtesy lighting, and canvas covers for the helm and Stidd chairs, access to the machinery is excellent via an engines access hatch and a hydraulic lifting helm floor for full engine access, and three Stidd helm seats together with a 24,000 BTU helm deck air conditioning system complete a helm that is equal parts command center and lounge.

Propulsion

Twin MAN D2876LE423 diesel engines from 2008 provide the heartbeat of the Cabo 40 Express, each delivering a total power of 596.56 kW, translating the brand's reputation for torque and durability into authoritative, efficient performance.

Specifications

Dimensions include a 40 ft length overall and a 15.8 ft beam, tankage consists of one fresh water tank of 95 gal and one fuel tank of 550 gal, and the hull is constructed of fiberglass, delivering strength, longevity, and a clean, easily maintained finish.

Disclaimer

The details of this vessel are offered in good faith but without guarantee or warranty as to their accuracy, and no warranty is made regarding the vessel's condition; buyers are encouraged to instruct their agents or surveyors to

investigate any particulars they wish to have verified, and this vessel is offered subject to prior sale, price change, or withdrawal without notice.

CONTACTS

Shestakov Yacht Sales is a brokerage company specializing in the sale and service of yachts worldwide. The company offers services for buying and selling both new and used motor yachts, sailing vessels, and luxury superyachts. They also provide yacht registration, insurance, technical maintenance, crew selection, and charter organization services across the U.S., Canada, Latin America, the Caribbean, and the Bahamas.

The founder and lead broker of the company is Andrey Shestakov, a licensed and certified expert with extensive experience in marine engineering and shipbuilding.

The company has an extensive network of partnerships with major yacht manufacturers worldwide and provides services in multiple languages, including Russian, Ukrainian, Spanish, and English. The office is in Dania Beach, Florida, USA.

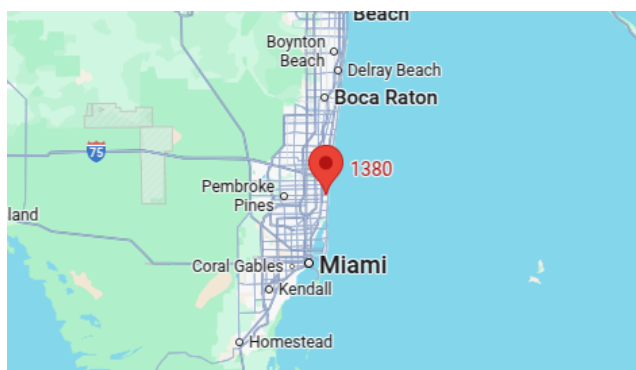
For more information and to view available yachts, you can visit the company's official website: <https://shestakovyachtsales.com>

Contact details

Phone: +1(954)274-4435

Email: andrey@shestakovyachtsales.com

Address



1380 Weeping Willow Way, Hollywood,
Florida 33019