

## FAST CASH - BOSTON WHALER



**Builder:** [BOSTON WHALER](#)

**LOA:** 42' 0" (12.80 m)

**Year Built:** 2020

**Beam:** 12' 0" (3.81 m)

**Model:** 420

**Max Draft:** 9' 10" (3 m)

**Price:** \$899,000 USD Subject to change.

**Cruising Speed:** 30 Knots (34.52 MPH)

[See full listing on our website](#)

**Location:** Cabo San Lucas, Mexico

**Max Speed:** 42 Knots (48.33 MPH)

---

# TABLE OF CONTENTS

---

**OVERVIEW ..... 3**

**SPECIFICATIONS ..... 5**

    Basic Information ..... 5

    Dimensions ..... 5

    Speed, Capacities and Weight ..... 5

    Hull and Deck Information ..... 6

    Engine Information ..... 6

**GALLERY ..... 7**

**DETAILED DESCRIPTION ..... 19**

**CONTACTS ..... 21**

# OVERVIEW

---

## 2020 Boston Whaler 420

This stunning yacht is currently docked in Cabo San Lucas, Mexico, with the possibility of assistance for relocation to San Diego.

The 420 acts as a lavish tender for a motor yacht and has been meticulously cared for by a dedicated full-time crew since its purchase.

Ownership is held through a transferable LLC, ensuring a smooth transition for the new owner.

With just 885 hours on the clock, this yacht has been diligently maintained, undergoing a thorough 300-hour service every 100 hours.

Outfitted with premium Raymarine electronics, including radar and FLIR, this yacht is crafted for both high performance and comfort. The Seakeeper system enhances stability, ensuring every voyage is smooth and pleasurable.

### Standard Features:

All fittings made from 316-L stainless steel

Welded 316-L stainless steel rails for enhanced durability

Deck and cockpit feature 10" stainless steel cleats and a sturdy anchor roller davit

A sleek acrylic transom door with a stainless steel latch

A robust polished stainless steel bow tow eye

Numerous drink holders throughout, keeping refreshments always at hand

LED courtesy lighting in the cockpit, creating a welcoming ambiance

A pressurized insulated livewell with a clear lid and LED lighting for fishing enthusiasts

Molded fiberglass boarding/dive door with a detachable stainless steel dive ladder

A fully equipped helm console with dual A/C vents, a central helm layout, and a lockable glove box with USB charging ports

Mercury DTS dual binnacle controls and a SmartCraft Vessel View 7" color LCD display for effortless navigation

An advanced Raymarine gS165 electronics suite, including GPS, chart plotter, and fishfinder

A theft deterrent system with remote connectivity, offering peace of mind while you enjoy your time on the water

An open windshield hardtop system with integrated LED lighting and outriggers ready for fishing excursions

A deluxe leaning post with a bait prep center, electric grill, and ample storage for all your fishing equipment

This yacht is more than just a vessel; it's an invitation to experience the pinnacle of maritime luxury. Whether you're in the market to purchase a yacht or explore yacht sales in the current boat location, this Boston Whaler 420 presents a remarkable opportunity that blends luxury, performance, and sophistication.

# SPECIFICATIONS

---

## Basic Information

---

**Category:**  
Motor yachts

**Year Built:**  
2020

**Sub category:**  
Cruisers

**Country:**  
Mexico

**Model Year:**  
2020

## Dimensions

---

**LOA:**  
42' 0" (12.80 m)

**Max Draft:**  
9' 10" (3 m)

**Beam:**  
12' 0" (3.81 m)

## Speed, Capacities and Weight

---

**Cruise Speed:**  
30 Knots (34.52 MPH)

**Water Capacity:**  
50 Gallons

**Max Speed:**  
42 Knots (48.33 MPH)

**Fuel Capacity:**  
600 Gallons

## Hull and Deck Information

---

**Hull Material:**

Fiberglass and Plastic Yachts

**Hull Designer:**

N/A

**Deck Material:**

Fiberglass

**Interior Designer:**

N/A

**Hull Configuration:**

N/A

## Engine Information

---

**Engines:**

2

**Engine Type:**

Outboard

**Manufacturer:**

Mercury

**Fuel Type:**

Gas

# GALLERY

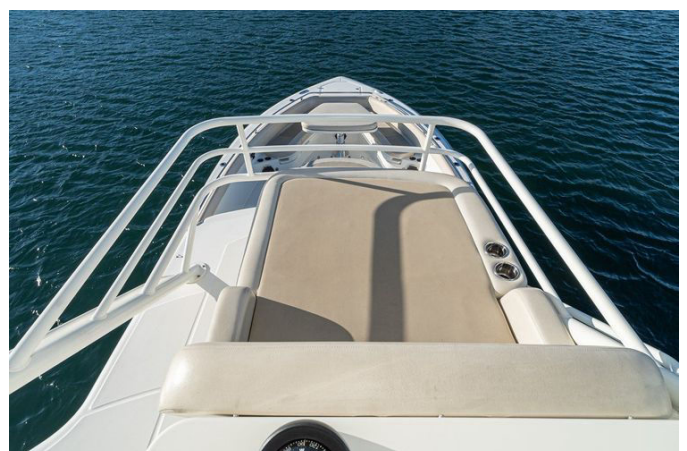
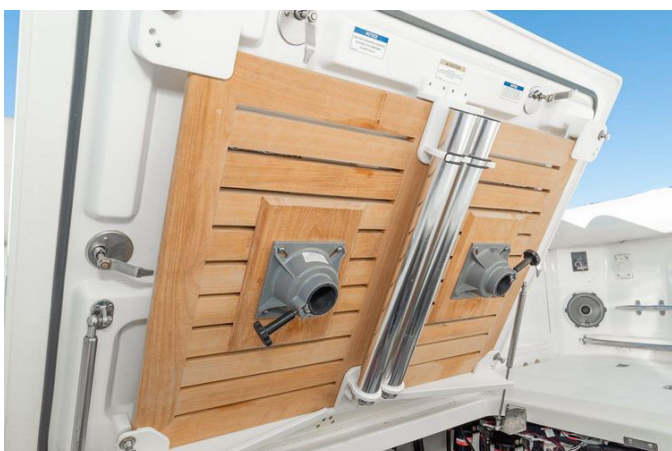
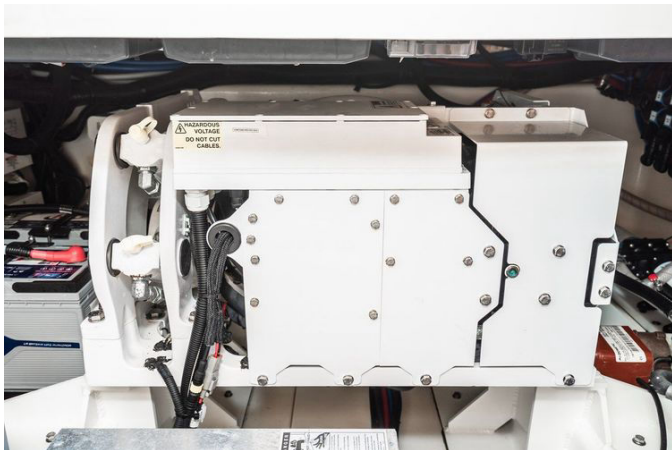










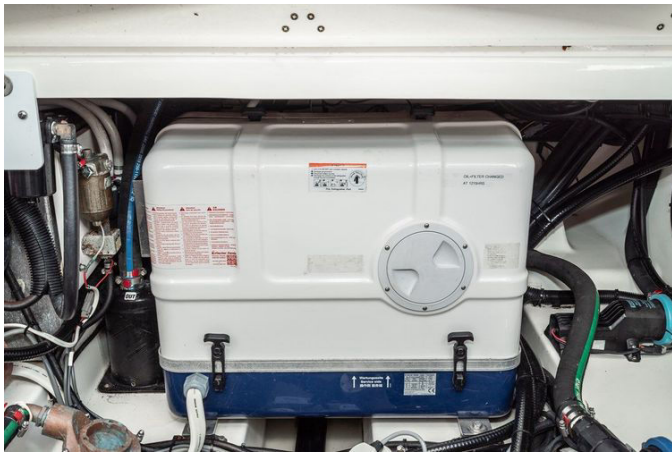














---

# DETAILED DESCRIPTION

---

## Section name

---

This yacht is outfitted with a remarkable selection of electronics and interior equipment, guaranteeing a smooth and opulent experience on the water. The electronic package features a depth sounder, a long-speedometer, and a fully integrated navigation center, complete with a plotter and autopilot for effortless sailing. A compass and GPS system ensure accurate navigation, while the VHF radio and radar provide safety and communication. Entertainment is well-provided with a TV, radio, CD player, and speakers in the cockpit, allowing you to enjoy your favorite music or shows while cruising.

Inside, the yacht is equipped with a variety of features designed for comfort and ease. A Seakeeper stabilizer ensures a stable journey, while the galley is fully equipped with a dishwasher, oven, and microwave. The marine head and electric toilet offer modern sanitation, and the refrigerator keeps your supplies fresh. A battery charger, along with both electric and manual bilge pumps, are included for peace of mind. Climate control is managed by air conditioning and heating systems, with hot water readily available. A sea water pump adds to the yacht's capabilities.

The electrical systems are exceptional, featuring a shore power inlet, generator, and inverter, ensuring you have all the energy needed for your voyage. Outside, the yacht is equipped with comfortable cockpit cushions, a swimming ladder for easy water access, and a cockpit shower for rinsing off. Outboard engine brackets and a radar reflector enhance the yacht's versatility and safety. A cockpit table offers an ideal spot for dining or relaxation.

Lastly, the yacht includes a cockpit cover, providing protection from the elements when necessary. This yacht is a perfect fusion of luxury, practicality, and advanced technology, making it an ideal choice for those in search of an

extraordinary yachting experience.

# CONTACTS

---

Shestakov Yacht Sales is a brokerage company specializing in the sale and service of yachts worldwide. The company offers services for buying and selling both new and used motor yachts, sailing vessels, and luxury superyachts. They also provide yacht registration, insurance, technical maintenance, crew selection, and charter organization services across the U.S., Canada, Latin America, the Caribbean, and the Bahamas.

The founder and lead broker of the company is Andrey Shestakov, a licensed and certified expert with extensive experience in marine engineering and shipbuilding.

The company has an extensive network of partnerships with major yacht manufacturers worldwide and provides services in multiple languages, including Russian, Ukrainian, Spanish, and English. The office is in Dania Beach, Florida, USA.

For more information and to view available yachts, you can visit the company's official website: <https://shestakovyachtsales.com>

## Contact details

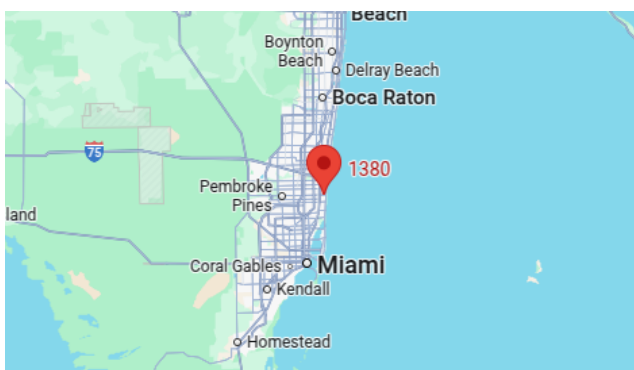
---

**Phone:** +1(954)274-4435

**Email:** [andrey@shestakovyachtsales.com](mailto:andrey@shestakovyachtsales.com)

## Address

---



1380 Weeping Willow Way, Hollywood,  
Florida 33019