

HOOK 'EM - HATTERAS



Builder: [Hatteras](#)

Beam: 14' 0" (4.34 m)

Year Built: 1989

Min Draft: 11' 6" (3.50 m)

Model: 42 Convertible

Max Draft: 13' 1" (4 m)

Price: \$115,000 USD Subject to change.

[See full listing on our website](#)

Location: Fort Lauderdale, United States

LOA: 42' 0" (12.83 m)

TABLE OF CONTENTS

OVERVIEW	3
SPECIFICATIONS	5
Basic Information	5
Dimensions	5
Speed, Capacities and Weight	5
Accommodations	5
Hull and Deck Information	6
Engine Information	6
GALLERY	7
DETAILED DESCRIPTION	11
CONTACTS	17

OVERVIEW

Experience the Enduring Charm of a Classic Yacht

Welcome aboard this stunning 1989 yacht, a genuine reflection of timeless artistry and opulence. Situated in the heart of the United States, this 42-foot wonder is a symbol of elegance and capability, ready to be discovered by passionate yacht aficionados. Whether you're aiming to purchase a yacht or explore yacht sales in the current boat location, this vessel offers an unmatched experience on the water.

An Artistic Triumph in Design and Craftsmanship

Constructed with a sturdy fiberglass and plastic hull, this yacht radiates strength and resilience, ensuring a smooth and steady voyage across the seas. The elegant 14-foot beam provides generous space for leisure and socializing, while the meticulously crafted deck, also made of fiberglass, combines style with practicality.

Powerful Performance

Fitted with dual Detroit Diesel engines, this yacht offers remarkable power and dependability, making it perfect for both relaxing cruises and thrilling adventures. The inboard engine setup, along with the efficiency of diesel fuel, guarantees that each journey is as cost-effective as it is exciting.

Opulent Comfort and Features

Enter to find a realm of comfort and sophistication. The roomy interior is carefully designed to meet all your needs, featuring a well-equipped head and ample living quarters. With a substantial water capacity of 150 gallons and a fuel capacity of 500 gallons, this yacht is ideally suited for long voyages, allowing you to navigate the open waters with assurance.

An Extraordinary Opportunity

This yacht for sale is more than just a vessel; it's an invitation to a life of luxury

and exploration. Whether you're an experienced sailor or a newcomer looking to purchase a yacht, this classic gem provides an unparalleled chance to own a piece of nautical heritage. With yacht sales in the current boat location, now is the ideal moment to turn this dream into reality.

Seize the Adventure

Don't let the opportunity to own this extraordinary yacht pass you by. With clean trades welcome, this is your chance to enter a world of sophistication and performance. Reach out to us today to discover more about this exceptional yacht for sale and set sail on your next grand adventure.

SPECIFICATIONS

Basic Information

Category:
Motor yachts

Year Built:
1989

Sub category:
Sport Fisherman

Country:
United States

Model Year:
1989

Dimensions

LOA:
42' 0" (12.83 m)

Beam:
14' 0" (4.34 m)

Min Draft:
11' 6" (3.50 m)

Max Draft:
13' 1" (4 m)

Speed, Capacities and Weight

Water Capacity:
150 Gallons

Fuel Capacity:
500 Gallons

Accommodations

Total Heads:
1

Hull and Deck Information

Hull Material:

Fiberglass and Plastic Yachts

Hull Designer:

N/A

Deck Material:

Fiberglass

Interior Designer:

N/A

Hull Configuration:

N/A

Engine Information

Engines:

2

Engine Type:

Inboard

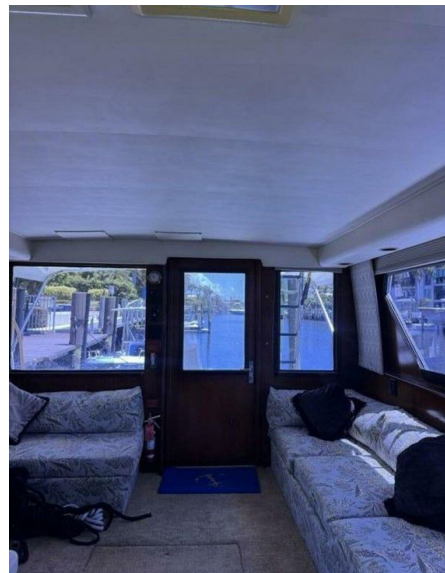
Manufacturer:

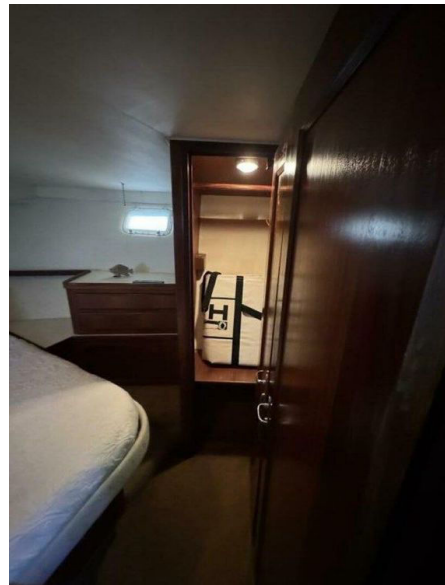
Detroit Diesel

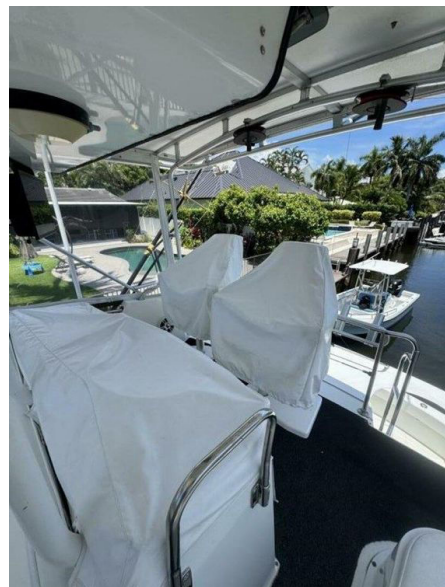
Fuel Type:

Diesel

GALLERY









DETAILED DESCRIPTION

Section name

"Hook 'Em" stands out as an extraordinary vessel, treasured by its present owners and celebrated for its exceptional fishing prowess. This boat has consistently provided remarkable performance, reeling in more than its fair share of catches. It has been diligently maintained and regularly serviced, ensuring it stays in top-notch condition. The seller is very eager and willing to consider clean trades, presenting a unique opportunity for potential buyers.

Machinery

This yacht is driven by dual Detroit Diesel 692 engines, each with 6 cylinders and delivering a remarkable 535 horsepower. These engines are fitted with a fresh water-cooling system, which ensures peak performance and durability. Fuel management is handled efficiently with Racor fuel filters, while Morse cable controls offer precise steering. The ZF reduction gear boosts the vessel's agility, making navigation a pleasure. The yacht is equipped with flexible bronze shaft logs, supporting sturdy 2-inch stainless steel propeller shafts. Rounding out the propulsion system are two 26 x 26 4-blade bronze propellers, crafted for smooth and powerful passage through the water.

Upgrades within the last 2 years

Over the last two years, this yacht has received substantial enhancements to guarantee optimal performance and dependability. The starboard engine was carefully reconstructed in May 2025, and the port engine underwent the same thorough refurbishment in June 2024. Furthermore, both heat exchangers were replaced in June 2024, significantly boosting the vessel's efficiency and

operational soundness. These improvements demonstrate a dedication to keeping the yacht in prime condition, ensuring peace of mind and outstanding performance for its future owner.

Electrical

The yacht's electrical setup is crafted for both dependability and efficiency, featuring a Phasor K3 8 kW generator with fresh water cooling to guarantee a steady power supply. This generator is fitted with a Racor primary fuel filter and a spin-on secondary filter, boosting its operational reliability. Energy storage is handled by four 12V batteries, maintained in peak condition by a Charles 50-amp battery charger. The onboard lighting system is adaptable, offering both 12V DC and 120V AC options to meet diverse needs and preferences. This well-rounded electrical configuration ensures that all systems on board operate seamlessly, delivering a comfortable and stress-free experience for everyone on board.

Fittings and equipment

The yacht boasts premium fittings and equipment, meticulously designed to elevate both functionality and comfort. The deck hardware, constructed from robust stainless steel and aluminum, guarantees durability and resistance to harsh conditions. The Hynautic hydraulic steering system ensures effortless and responsive navigation. Anchoring is both secure and dependable with the Fortress FX-23 anchor, featuring around 12 feet of 3/8-inch chain and 200 feet of 3/4-inch nylon rode, all operated by a Galley Maid 12V DC anchor windlass for smooth deployment and retrieval.

Onboard comfort is further enhanced by an electric hot water system and two Cruisair air conditioning units, maintaining a comfortable atmosphere in any weather. Safety is a top priority, with three automatic bilge pumps efficiently

handling any excess water, providing peace of mind. This extensive selection of fittings and equipment ensures that every voyage is as comfortable and safe as possible.

Electronics

The yacht is equipped with an extensive array of electronics, meticulously designed to improve navigation and communication while at sea. Central to its communication system is a Garmin VHF radio, providing clear and dependable contact at all times. For navigation, the vessel features a Furuno radar and a Garmin 276C GPS, offering precise and reliable guidance. The Robertson AP300X autopilot further simplifies navigation, allowing for effortless course control.

Safety and visibility are enhanced with electric navigation and anchor lights, while the Ritchie Powerdamp compass provides accurate directional information. An electric air horn is included for signaling, ensuring the yacht is ready for any situation. The vessel also boasts three antennas dedicated to VHF, GPS, radar, and satellite radio, ensuring strong connectivity and communication capabilities. This suite of electronics guarantees that every voyage is safe, efficient, and enjoyable.

Hull

The yacht's hull is a marvel of design and craftsmanship, constructed with molded fiberglass that includes an end grain balsa core for both the decks and superstructure. This building technique guarantees outstanding strength and durability while keeping the structure lightweight. The topsides are also crafted from molded fiberglass with core material, ensuring a strong and resilient exterior. The hull's bottom is entirely made of molded fiberglass, providing superior hydrodynamic performance.

The keel features a 12-inch depth at the aft end, enhancing the vessel's stability and smooth maneuverability. Both the stem and stern are elegantly curved, with the stern showcasing a beautifully arched transom that adds to the yacht's visual allure.

Inside, the yacht radiates luxury and comfort. The interior boasts a vinyl overhead, carpeted flooring, and exquisite teak veneer paneling, accented by teak trim. Corian counter surfaces introduce a modern touch of elegance, making the interior both functional and stylish. This blend of materials and design elements ensures the yacht is not only visually impressive but also built to endure the challenges of the sea.

Galley

The galley is strategically located on the starboard side of the salon, providing both ease and practicality for culinary activities on board. It features a premium Sub-Zero refrigerator and freezer, complete with an ice maker, ensuring that all your food and drink storage requirements are met with elegance and efficiency. This arrangement not only elevates the yacht's luxurious ambiance but also offers the practicality necessary for long journeys, making meal preparation and storage an effortless task.

Safety and fire fighting equipment

The yacht is outfitted with an extensive range of safety and fire-fighting equipment, providing peace of mind for everyone on board. It includes Type I life jackets, crafted to offer maximum buoyancy and protection in emergencies. Additionally, a Type IV ring buoy is available, serving as a dependable rescue tool in the water.

For fire protection, the yacht is equipped with a Kidde 10B:C dry chemical fire extinguisher, along with three Amerex 1A:10B:C dry chemical extinguishers,

strategically positioned for easy access. Moreover, a Kidde 1301 Halon built-in system is installed on the starboard forward side of the engine room, delivering an advanced level of fire suppression. This comprehensive safety and fire-fighting arrangement ensures the yacht is thoroughly prepared to manage any unexpected situations, prioritizing the safety and security of all aboard.

Other electronics and equipment

This yacht boasts an impressive selection of electronics and equipment, crafted to enhance both functionality and enjoyment on the water. The Bennett trim tabs and battery parallel system ensure peak performance and efficient power management, while the Glendinning engine synchronizer guarantees smooth and effective engine operation. For navigation and depth assessment, the Furuno FCV-582 color video depth sounder and Garmin 1242 XSV Touch GPS deliver precise and dependable information.

Communication is bolstered by the ICOM IC-M59 auxiliary VHF radio and the ICOM IC-M127 VHF radio located in the galley. The VDO rudder angle indicator aids in accurate steering, and the Fusion stereo on the flybridge offers entertainment with superior sound quality. The flybridge is further outfitted with a fiberglass hardtop, six rail-mounted rod holders, and a set of PipeWelders double spreader outriggers and center rigger, making it perfect for fishing enthusiasts.

The cockpit is a center of activity, featuring a Release fish fighting chair, a cockpit freezer, and a tackle locker with a freshwater sink. It also includes a fish box with a discharge pump, seawater wash down, and multiple rod holders, ensuring a seamless fishing experience. For convenience, the cockpit is equipped with boarding steps, a transom door, and a Garelick swim boarding ladder, complemented by transom underwater lights for added ambiance.

Entertainment and comfort extend to the salon with a Clarion

AM/FM/cassette/CD stereo and a Whirlpool microwave convection oven. The Raritan ice maker ensures refreshments are always available. The yacht is also equipped with a comprehensive engine and generator oil change system, a fuel priming system, and three operable bilge high water alarms for safety. Additional features include dockside telephone and cable TV systems, a Glendinning shore power cord retractor, and cockpit coaming lights. Electric reel plugs and a bow anchor pulpit add to the yacht's versatility. For protection against the elements, canvas covers provide a three-sided enclosure for the flybridge, a console cover, and a partial Bimini for the cockpit. This extensive suite of electronics and equipment ensures that every journey is both comfortable and enjoyable.

CONTACTS

Shestakov Yacht Sales is a brokerage company specializing in the sale and service of yachts worldwide. The company offers services for buying and selling both new and used motor yachts, sailing vessels, and luxury superyachts. They also provide yacht registration, insurance, technical maintenance, crew selection, and charter organization services across the U.S., Canada, Latin America, the Caribbean, and the Bahamas.

The founder and lead broker of the company is Andrey Shestakov, a licensed and certified expert with extensive experience in marine engineering and shipbuilding.

The company has an extensive network of partnerships with major yacht manufacturers worldwide and provides services in multiple languages, including Russian, Ukrainian, Spanish, and English. The office is in Dania Beach, Florida, USA.

For more information and to view available yachts, you can visit the company's official website: <https://shestakovyachtsales.com>

Contact details

Phone: +1(954)274-4435

Email: andrey@shestakovyachtsales.com

Address



1380 Weeping Willow Way, Hollywood,
Florida 33019