



ANDIAMO - MATTHEWS



Builder: [MATTHEWS](#)

Beam: 13' 0" (3.96 m)

Year Built: 1962

Min Draft: 10' 11" (3.33 m)

Model: 42 Double Cabin

Max Draft: 11' 9" (3.58 m)

Price: \$85,000 USD Subject to change.

Cruising Speed: 8 Knots (9.21 MPH)

[See full listing on our website](#)

Location: Lacombe, United States

LOA: 42' 0" (12.90 m)

If you would like to buy a yacht **ANDIAMO - MATTHEWS** or would like help answering any questions concerning purchasing, selling, or chartering a yacht, please call **+1(954)274-4435** or click here on <https://shestakovyachtsales.com>

TABLE OF CONTENTS

OVERVIEW 3

SPECIFICATIONS 4

 Basic Information 4

 Dimensions 4

 Speed, Capacities and Weight 4

 Accommodations 4

 Hull and Deck Information 5

 Engine Information 5

GALLERY 6

DETAILED DESCRIPTION 17

CONTACTS 21

OVERVIEW

On August 19, 1961 Mr. Alden Sypher of Washington, D.C. signed the agreement for a bespoke MATTHEWS 42' DOUBLE CABIN MOTORYACHT, hull number 24033, outfitted with the most potent propulsion then available, twin GM 6V53 engines producing 185 hp. Nine months of exacting design, craftsmanship, and custom detailing yielded a gleaming mahogany motor yacht christened ANDIAMO, a vessel for which Mr. Sypher expended the equivalent of \$623,791 in today's dollars.

For three seasons ANDIAMO threaded the waters of the Chesapeake and the Eastern seaboard with the Sypher family aboard, before changing hands in 1965. Now in the care of her seventh custodian, a keeper whose fastidious attention surpasses that of prior owners, she has proudly borne her original name since launch. From 1999 onward the current owner has lavished care and investment upon her preservation, commissioning a professional fiberglass skin and the fabrication of a custom aft deck top to extend her life and utility.

Celebrated at numerous classic boat shows, ANDIAMO continues to attract admiration and is slated to be presented at the BILLY CREEL MEMORIAL GULF COAST WOODEN & CLASSIC BOAT SHOW on May 17 and 18. It has been requested that she carry on her legacy as the Queen of the Fleet under her original name, ANDIAMO. If you are considering a yacht for sale in the current boat location, this rare opportunity to buy a yacht that marries refinement and history should not be overlooked. Explore yacht sales in the current boat location and experience the enduring allure of American maritime artistry.

SPECIFICATIONS

Basic Information

Category:
Motor yachts

Year Built:
1962

Model Year:
1962

Country:
United States

Dimensions

LOA:
42' 0" (12.90 m)

Beam:
13' 0" (3.96 m)

Min Draft:
10' 11" (3.33 m)

Max Draft:
11' 9" (3.58 m)

Speed, Capacities and Weight

Cruise Speed:
8 Knots (9.21 MPH)

Fuel Capacity:
250 Gallons

Water Capacity:
35 Gallons

Accommodations

Total Heads:
2

Hull and Deck Information

Hull Material:

Fiberglass and Plastic Yachts

Hull Designer:

N/A

Deck Material:

Fiberglass

Interior Designer:

N/A

Hull Configuration:

N/A

Engine Information

Engines:

1

Engine Type:

Inboard

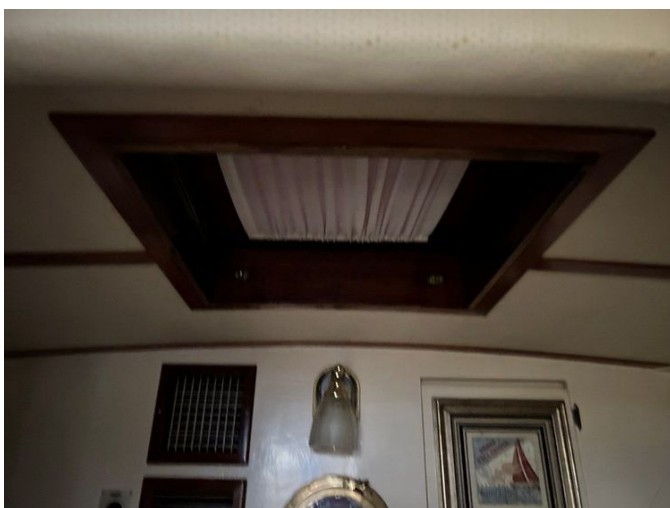
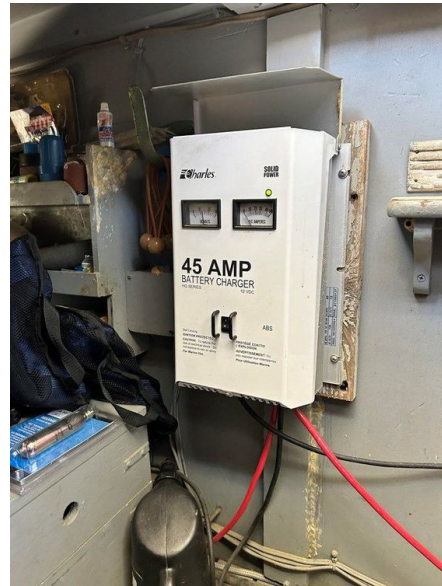
Manufacturer:

Detroit Diesel

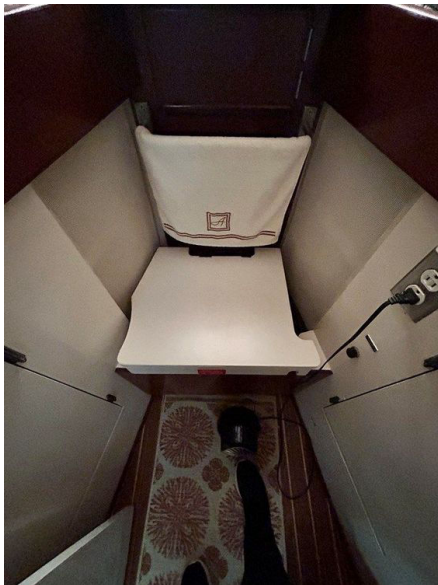
Fuel Type:

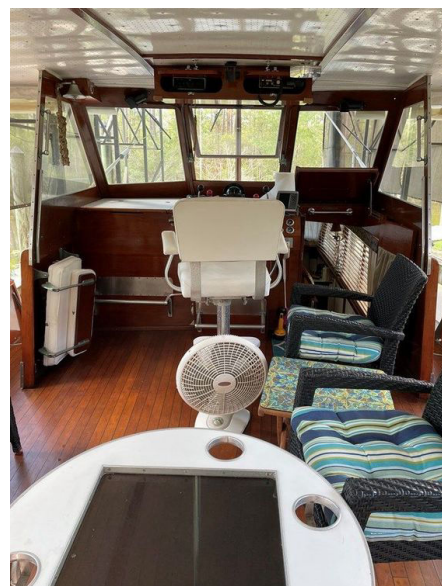
Diesel

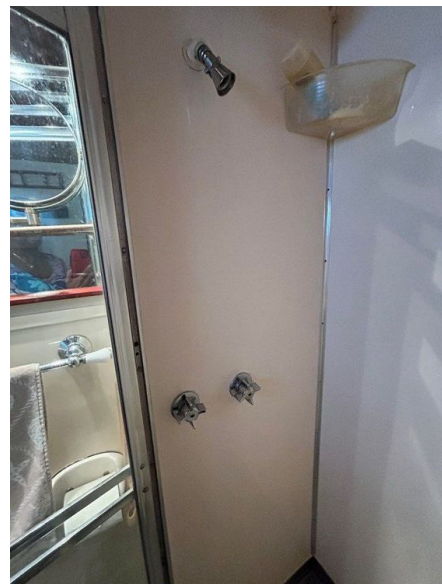
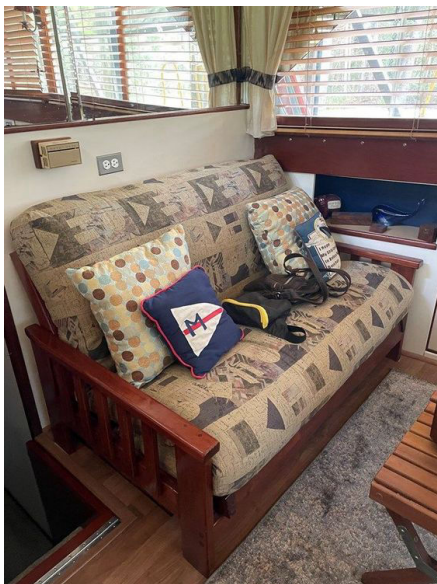
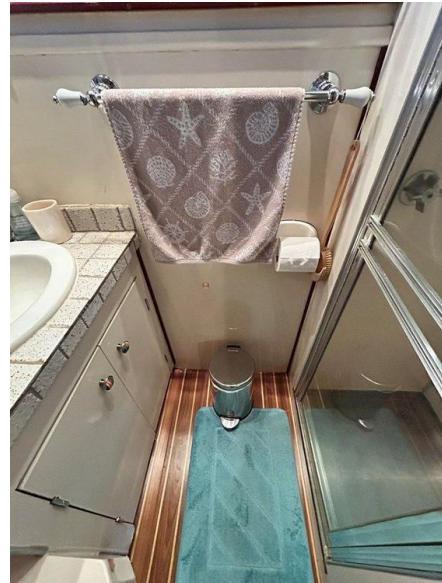
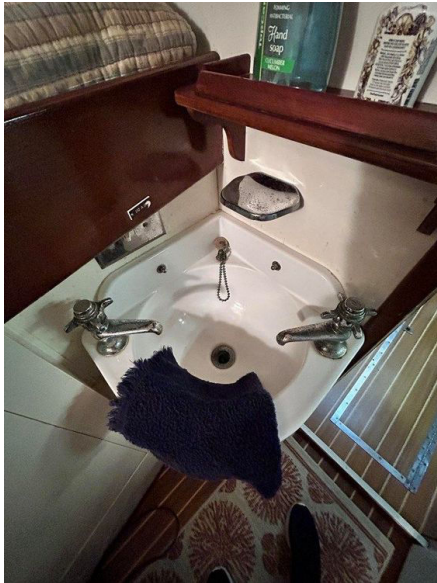
GALLERY





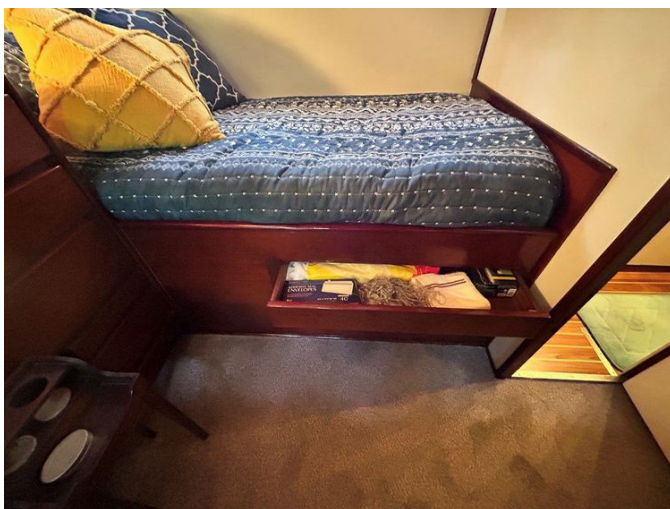


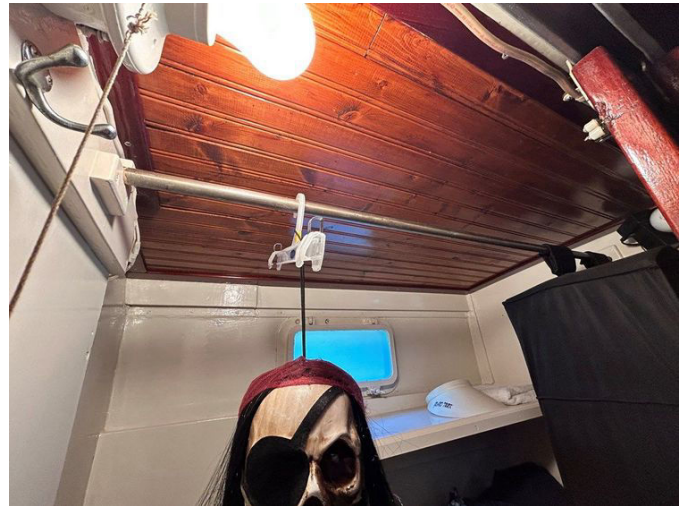


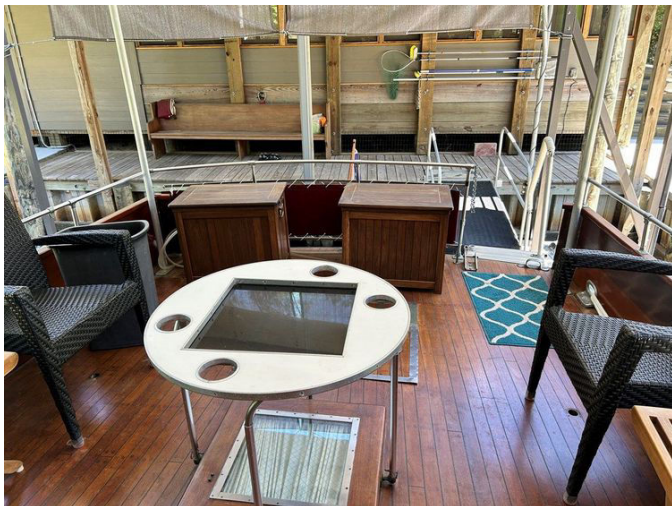














DETAILED DESCRIPTION

Accommodations

Stepping aboard Andiamo, guests are welcomed by an exceptionally comfortable aft deck that leads down four carpeted steps into a main saloon flooded with natural light from large opening windows fitted with custom blinds on both port and starboard. The forward saloon is graced with expansive windows and bespoke coverings, creating an open, airy environment that flows all the way forward to the VIP cabin and conveys the feeling of a far larger vessel. To port and aft a convertible settee rests beneath a large mahogany-trimmed mirror, complemented by a teak coffee table and two matching teak chairs that form an intimate relaxation area. The Matthews Boat Company has meticulously insulated the yacht to minimize engine noise, with the main engines positioned beneath the cabin sole, while the teak cabin sole gleams beneath a pristine white overhead accented by mahogany battens and rich mahogany trim that contrasts the hidden white storage lockers lining the saloon. Forward and down three steps, the galley and dining area reveal a practical layout: to port a U-shaped settee with built-in storage and ample shelving serves owners and guests, its forward deckhead finished in exquisite tongue-and-groove mahogany, and to starboard a seagoing galley offers a full-sized refrigerator with freezer, double stainless sinks, and abundant storage—reflecting the Matthews tradition of outfitting yachts for long passages. The teak and holly sole remains impeccable, there is nearly 6'3" of headroom, and plentiful wall space invites the display of artwork, a hallmark of a true yacht. The two-cabin arrangement ensures privacy, with a traditional V berth forward offering storage, bookshelves, and hanging lockers; a convenient wash basin aft to starboard; and a covered marine head mid-cabin between the twin berths, enhanced by the original wire-reinforced deck hatch

for excellent ventilation and light. This private guest suite includes climate controls and access to the chain locker concealed behind an attractive piece of artwork. Crossing the main saloon and descending three carpeted steps brings you to the serene owner's en-suite, where windows with custom treatments run along both sides and two berths with new mattresses flank a four-drawer mahogany dresser topped by a handcrafted mahogany-framed mirror. Storage is generous—though the pirate in the hanging locker is negotiable—and the teak and holly sole pairs beautifully with a mahogany tongue-and-groove overhead and an additional large hatch that bathes the cabin in light, while generous wall space remains for treasured pieces. The private head to port includes a large separate shower with stainless steel shower pan and an upgraded Electrosan toilet system, a tiled vanity with an ample medicine cabinet and excellent natural light above a gleaming teak and holly sole. Andiamo's beautiful yet simple lines turn heads in any port, and her show pedigree and meticulous records—complete with detailed Matthews Boat Company archives chronicling her build—attest to a classic yacht maintained in turnkey condition, ready for immediate cruising with additional photos and courtesy showings available and easy access from New Orleans airport.

Hull and deck

The Matthews Boat Company legacy is woven into Andiamo's structure: founded by Scott Matthews in 1890 and known for exceptional wooden yachts long before moving into fiberglass, the yard's heritage is reflected in the boat's meticulous craftsmanship and robust construction. Andiamo's hull begins with a seven-foot by twelve-inch solid white oak keel paired with hand-steamed white oak frames measuring one and one-quarter inches by one and seven-eighths inches on eight-inch centers, doubled from the main bulkhead aft to the transom for added stiffness. Her planking is Philippine mahogany at one and one-eighth inches below the waterline and one inch above, fastened

with bronze fasteners, and bronze rudders mirror that same strength. Under current custodianship Andiamo has benefited from modern reinforcement, including application of C-FLEX to the hull; this system, bonded to the prepared wood with an elastomeric adhesive and laminated with additional reinforcing layers, creates a resilient composite that preserves the integrity of vintage wooden construction. The decks have been treated with SPANTEX over five-eighths inch marine plywood, and the hull sides are painted to protect and present. Elegant teak aft decking and side walkways complement functional features such as an aft boarding gate with gangway, stainless deck hardware, a dual anchoring system, and a large lazarette housing new Monel fuel tanks. Steering flats and a chain-driven steering system provide accessible maintenance, new shaft tubes and protected props assure smooth propulsion, and two custom-built, wood-clad ice chests add convenience. Seating for four surrounds a custom round aft deck table, while a white helm seat, full engine instrumentation, electronics at the helm, a large mahogany steering wheel, searchlight, and a large windshield with wipers ensure confident control and visibility. Navigation is supported by a Garmin 545, VHF, depth finder and compass, dual airhorns provide audible safety, and a hinged mast allows passage under low bridges, confirming Andiamo as a versatile and well-appointed classic.

Mechanical and electrical

Andiamo was originally fitted with the larger GM 6V53 engines, each rated at 185 horsepower with two-to-one gears, engines that received major service in the 1990s just prior to the current custodianship; engine serial numbers are S 6D 1359 and P 6D 1360. The heavily insulated engine room, accessible through the main saloon sole, contributes to a quieter onboard environment. Electrical and auxiliary systems include a 7.5 kW Onan generator and an older-style Cruisair air conditioning installation, while the DC/AC system has been

modernized with a new Charles battery/inverter charger and newer four 8D batteries, supported by dual 30 amp shore service and straightforward access to electrical panels. Fresh water is delivered via both 110V and 12V pumps, the yacht features automatic bilge pumps and engine room blowers, and traditional stuffing boxes are in place. Propulsion hardware comprises 23 x 24 three-bladed bronze props on 1 1/2" stainless shafts, and hot water is available from a 110V five-gallon heater as well as from the engines when underway. The covered aft teak deck provides access to a dry lazarette with steps, housing the Onan generator, batteries and charger, with Racor filters mounted for easy inspection. The chain-driven steering system is straightforward to inspect and maintain, and a Charles 45 amp battery charger helps keep the electrical system robust and ready.

Disclaimer

As is fitting for a substantial yacht, Andiamo is adorned with a variety of artwork, objets d'art, personal items, and tools that will not be transferred to the new custodian. Additionally, the small table in the aft stateroom is not included in the conveyance. It is requested that Andiamo retains her name, as she has been known since her launch in 1962.

Disclaimer

The Company presents the details of this vessel in good faith, but it cannot guarantee or warrant the accuracy of this information, nor can it warrant the condition of the vessel. Prospective buyers are encouraged to instruct their agents or surveyors to investigate any details they wish to have validated. This vessel is offered subject to prior sale, price change, or withdrawal without notice.

CONTACTS

Shestakov Yacht Sales is a brokerage company specializing in the sale and service of yachts worldwide. The company offers services for buying and selling both new and used motor yachts, sailing vessels, and luxury superyachts. They also provide yacht registration, insurance, technical maintenance, crew selection, and charter organization services across the U.S., Canada, Latin America, the Caribbean, and the Bahamas.

The founder and lead broker of the company is Andrey Shestakov, a licensed and certified expert with extensive experience in marine engineering and shipbuilding.

The company has an extensive network of partnerships with major yacht manufacturers worldwide and provides services in multiple languages, including Russian, Ukrainian, Spanish, and English. The office is in Dania Beach, Florida, USA.

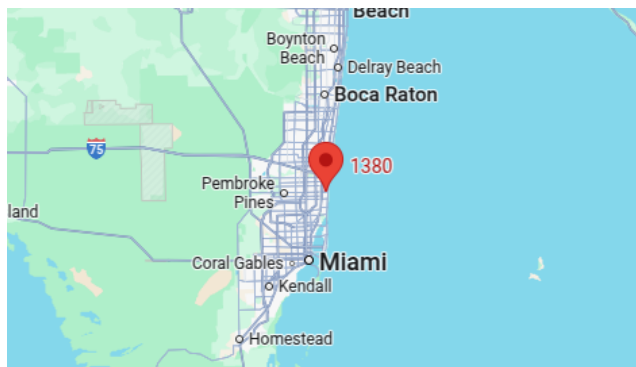
For more information and to view available yachts, you can visit the company's official website: <https://shestakovyachtsales.com>

Contact details

Phone: +1(954)274-4435

Email: andrey@shestakovyachtsales.com

Address



1380 Weeping Willow Way, Hollywood,
Florida 33019