

1955 COLIN ARCHER 42 - COLIN ARCHER



Builder: [COLIN ARCHER](#)

Beam: 14' 0" (4.39 m)

Year Built: 1955

Model: 42

Price: \$99,999 USD Subject to change.

[See full listing on our website](#)

Location: Portland, United States

LOA: 42' 0" (12.80 m)

TABLE OF CONTENTS

| | |
|------------------------------------|-----------|
| OVERVIEW | 3 |
| SPECIFICATIONS | 5 |
| Basic Information | 5 |
| Dimensions | 5 |
| Speed, Capacities and Weight | 5 |
| Accommodations | 5 |
| Hull and Deck Information | 6 |
| Engine Information | 6 |
| GALLERY | 7 |
| DETAILED DESCRIPTION | 20 |
| CONTACTS | 23 |

OVERVIEW

1955 Colin Archer 42

Presenting the magnificent 1955 Colin Archer Design 42, a true treasure from Norway. This wooden marvel has undergone a recent survey, showcasing its pristine condition. The current owner has invested over \$200,000 in its restoration, ensuring this trawler is not only romantic and charming but also seaworthy and primed for exploration.

Driven by a single Perkins T6.354M turbocharged diesel engine, this yacht is an efficient cruiser, featuring two fuel tanks with a combined capacity of 400 gallons. The electronics have been recently enhanced, including a Simrad multi-function display and radar for effortless navigation. It also includes an autopilot (Simrad AP44) and a Raymarine i40 depth sounder. A Magnum inverter and eight 6V batteries provide ample power for your maritime adventures.

Below deck, the living quarters are equally captivating. Rounded doorways lead to two staterooms—one at the bow and another on the starboard side—each with spacious double berths. The galley is well-equipped with ample cooking space, featuring a medium-sized fridge/freezer combo, microwave, and gas range. Just ahead of the galley, there is a dedicated workspace/chart desk. The head is fitted with a generous shower stall and ample storage for your necessities.

In the pilothouse, you'll find a large circular dinette offering stunning views through the rounded aft wall. With seating for seven or eight, it's an ideal spot for enjoying a delightful meal while anchored. A 200-gallon fresh water tank allows for extended stays off the grid.

On the bow, there are two anchor roller brackets and an Ideal anchor windlass, along with working lights that illuminate the forward deck. This yacht for sale is a remarkable opportunity for anyone looking to purchase a yacht in the

current boat location, making it a standout option in yacht sales in the area.
Don't miss the chance to own this exquisite vessel!

SPECIFICATIONS

Basic Information

Category:
Motor yachts

Year Built:
1955

Sub category:
Trawler

Country:
United States

Model Year:
1955

Dimensions

LOA:
42' 0" (12.80 m)

Beam:
14' 0" (4.39 m)

Speed, Capacities and Weight

Water Capacity:
200 Gallons

Fuel Capacity:
400 Gallons

Accommodations

Total Heads:
1

Hull and Deck Information

Hull Material:

N/A

Hull Designer:

COLIN ARCHER

Deck Material:

N/A

Interior Designer:

N/A

Hull Configuration:

N/A

Engine Information

Engines:

1

Engine Type:

Inboard

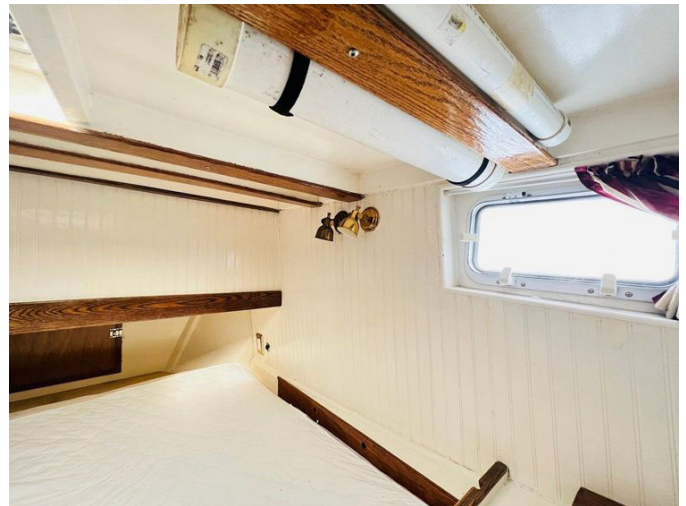
Manufacturer:

Perkins

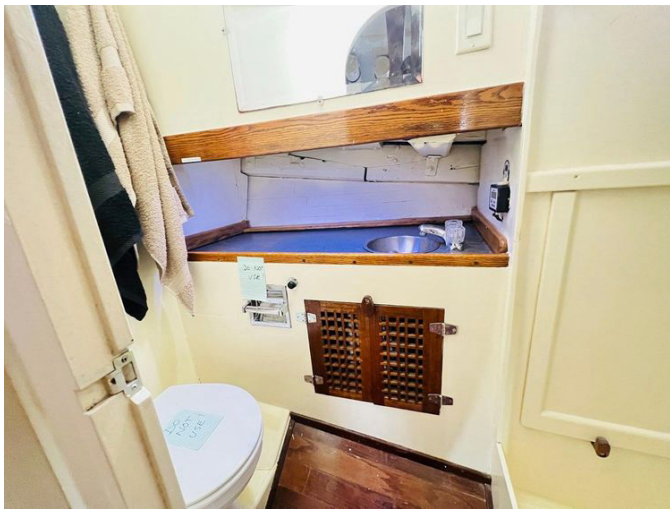
Fuel Type:

Diesel

GALLERY





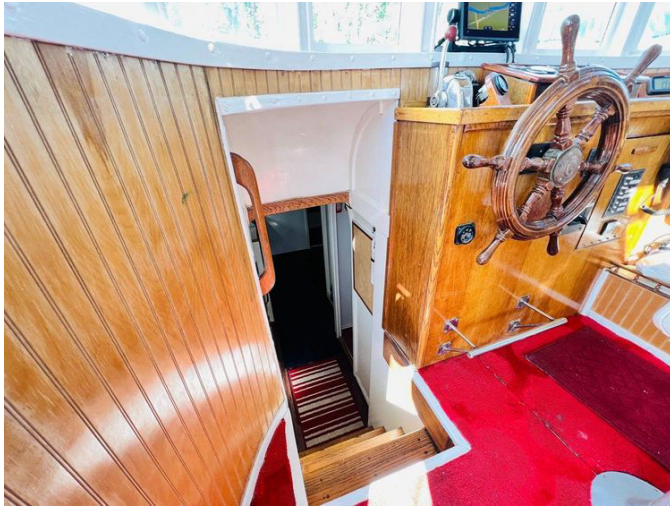


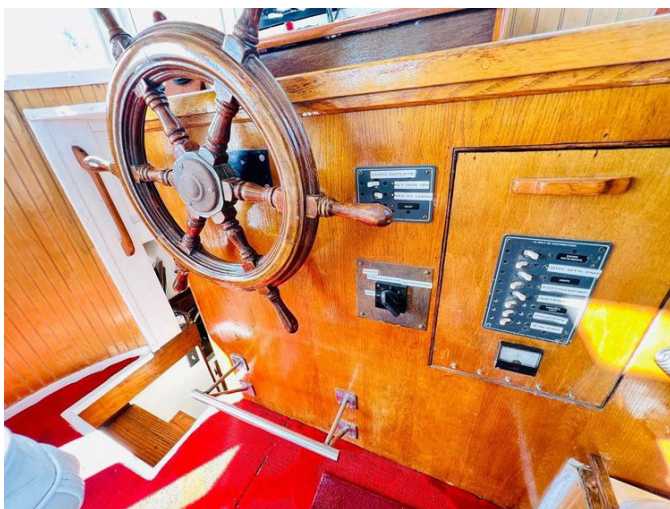


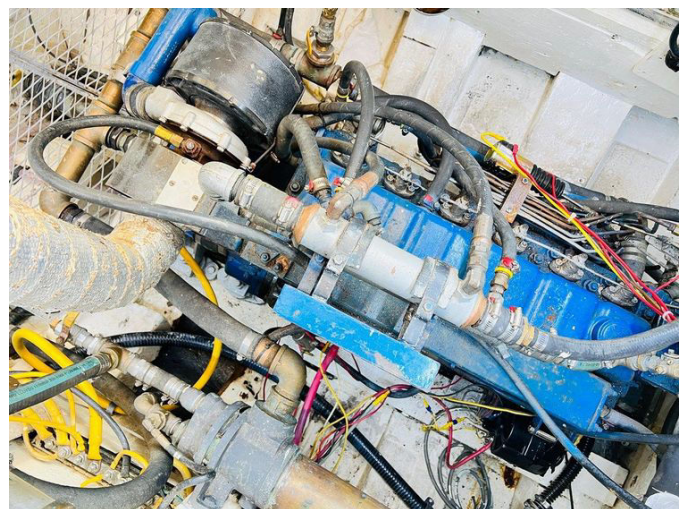
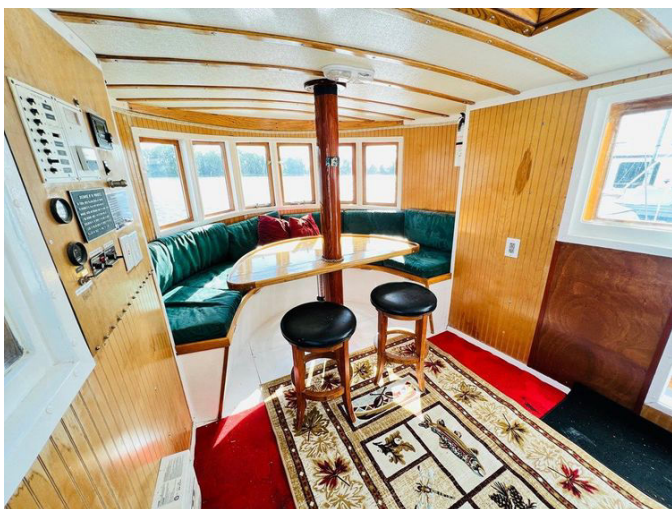


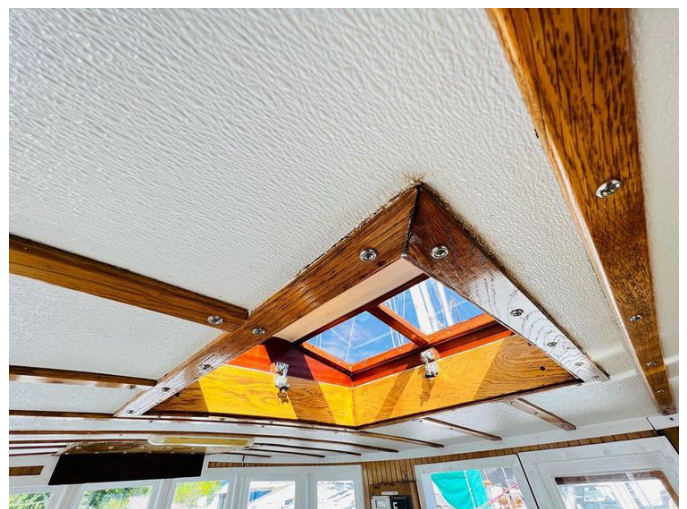
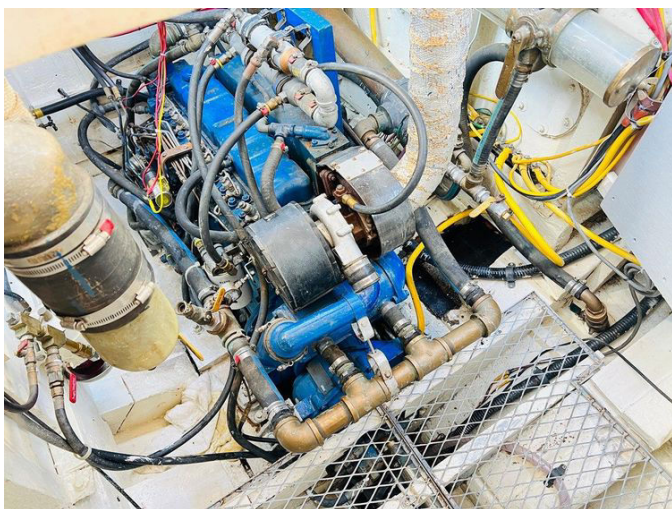


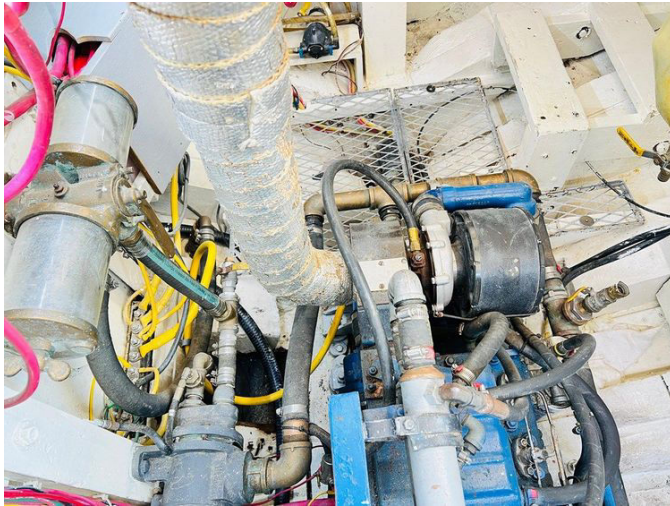














DETAILED DESCRIPTION

Section name

The 1955 Colin Archer 42 is a breathtaking showcase of Norwegian artistry, capturing the romantic allure and seaworthiness that define this classic trawler. Crafted entirely from wood and boasting a recent pristine survey, this vessel has been lovingly restored by its current owner, who has invested over \$200,000 into its revival.

Driven by a single Perkins T6.354M turbocharged diesel engine, this yacht is an efficient cruiser, featuring two fuel tanks with a combined capacity of 400 gallons. The electronics have been recently upgraded, including a Simrad Multi-function display and radar, a Simrad AP44 autopilot, and a Raymarine i40 depth sounder. A Magnum inverter, supported by eight 6V batteries, ensures dependable power for long voyages.

Below deck, the accommodations are as delightful as they are practical. Rounded doorways lead to two staterooms—one at the bow and another on the starboard side—each with spacious double berths. The galley is well-equipped with ample cooking space, a medium-sized fridge/freezer combo, microwave, and gas range. Just forward of the galley, a workspace/chart desk offers a dedicated area for navigation and planning. The head features a generous shower stall and ample storage, enhancing onboard comfort.

In the pilothouse, a large circular dinette provides stunning views through the rounded aft wall. This area comfortably seats seven or eight, making it ideal for enjoying meals while anchored. With a 200-gallon fresh water tank, the yacht is perfect for extended stays off the grid.

On the bow, two anchor roller brackets and an Ideal anchor windlass ensure secure anchoring, while working lights illuminate the forward deck, enhancing

safety and convenience. This 1955 Colin Archer 42 is more than just a vessel; it is a testament to timeless design and enduring quality, ready to offer its next owner endless adventures on the water.

Other details

The Company offers the information about this vessel with sincere intentions, striving to deliver precise and dependable details. Nonetheless, it is crucial to understand that the Company cannot guarantee or ensure the accuracy of this information, nor can it confirm the vessel's condition. Potential buyers are advised to have their agents or surveyors meticulously examine any specifics they wish to verify. This vessel is available with the understanding that it may be sold, have its price altered, or be removed from the market without prior notice.

Features

This yacht boasts an extensive range of features crafted to elevate both comfort and navigation. For electrical requirements, the vessel is equipped with a shore power inlet and an inverter, providing a dependable power source whether at the dock or on the open sea. The electronic systems are comprehensive, including a depth sounder, radar, plotter, autopilot, compass, and GPS, all of which ensure accurate and assured navigation.

Onboard, the yacht is outfitted with amenities that enhance comfort and convenience. An electric bilge pump keeps the vessel dry and secure, while the galley is well-equipped with an oven, microwave, and refrigerator, enabling a variety of culinary options. Hot water is readily available, further enhancing the comfort of prolonged stays on the water. Together, these features make this yacht an ideal choice for those in search of both adventure and leisure.

Propulsion

This yacht is driven by a sturdy Perkins engine, specifically the T6.354M model, offering a total power of 150 horsepower. With just 55 hours on the engine, this inboard motor is nearly new, ensuring many more years of dependable operation. The direct drive system guarantees effective power transmission, maximizing the engine's potential. Fueled by diesel, this configuration is both cost-effective and robust, perfect for extended journeys. The propulsion system is completed with a three-blade bronze propeller, renowned for its strength and efficiency, ensuring smooth and effective navigation through the water. This blend of features guarantees that the yacht is not only powerful but also efficient and trustworthy, ready for any adventure.

Specifications

This yacht features remarkable dimensions, measuring 42 feet in length and 14.5 feet in beam, offering generous space and stability on the water. Designed for long voyages, the vessel is equipped with a fresh water tank holding 200 gallons, providing ample supply for extended stays at sea. Furthermore, the yacht includes two fuel tanks, each with a capacity of 200 gallons, enabling prolonged cruising without the need for frequent refueling. Onboard accommodations feature a well-equipped head, ensuring comfort and convenience for all guests. These specifications underscore the yacht's suitability for both comfort and long-distance travel, making it an excellent choice for those in pursuit of adventure on the open seas.

CONTACTS

Shestakov Yacht Sales is a brokerage company specializing in the sale and service of yachts worldwide. The company offers services for buying and selling both new and used motor yachts, sailing vessels, and luxury superyachts. They also provide yacht registration, insurance, technical maintenance, crew selection, and charter organization services across the U.S., Canada, Latin America, the Caribbean, and the Bahamas.

The founder and lead broker of the company is Andrey Shestakov, a licensed and certified expert with extensive experience in marine engineering and shipbuilding.

The company has an extensive network of partnerships with major yacht manufacturers worldwide and provides services in multiple languages, including Russian, Ukrainian, Spanish, and English. The office is in Dania Beach, Florida, USA.

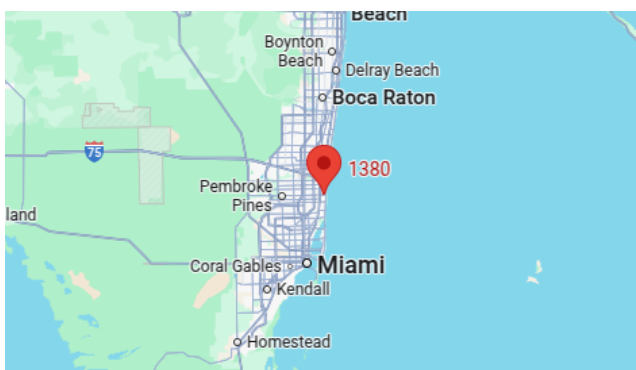
For more information and to view available yachts, you can visit the company's official website: <https://shestakovyachtsales.com>

Contact details

Phone: +1(954)274-4435

Email: andrey@shestakovyachtsales.com

Address



1380 Weeping Willow Way, Hollywood,
Florida 33019