

BALENA BLU - PACIFICA



Builder: [PACIFICA](#)

Beam: 14' 0" (4.50 m)

Year Built: 1972

Max Draft: 12' 10" (3.92 m)

Model: 48 Pilothouse

Price: \$15,250 USD Subject to change.

[See full listing on our website](#)

Location: San Diego, United States

LOA: 42' 0" (12.93 m)

TABLE OF CONTENTS

OVERVIEW	3
SPECIFICATIONS	4
Basic Information	4
Dimensions	4
Speed, Capacities and Weight	4
Hull and Deck Information	5
Engine Information	5
GALLERY	6
DETAILED DESCRIPTION	15
CONTACTS	19

OVERVIEW

“Baby Beluga” pairs spacious interior volume, a singular personality, and intelligently designed, seakindly performance in a package offered at a refreshingly accessible entry price. Whether you picture a comfortable liveaboard, a stout refit platform with excellent bones, or a unique waterside retreat, this motor yacht stands out for value among used yachts, liveaboard cruisers, coastal cruisers, and powerboats. Offered as a donation vessel in support of Scouting America, asking \$15,250.

SPECIFICATIONS

Basic Information

Category:
Motor yachts

Year Built:
1972

Sub category:
Trawler

Country:
United States

Model Year:
1972

Dimensions

LOA:
42' 0" (12.93 m)

Max Draft:
12' 10" (3.92 m)

Beam:
14' 0" (4.50 m)

Speed, Capacities and Weight

Water Capacity:
75 Gallons

Fuel Capacity:
200 Gallons

Hull and Deck Information

Hull Material:

Fiberglass and Plastic Yachts

Hull Designer:

N/A

Deck Material:

Fiberglass

Interior Designer:

N/A

Hull Configuration:

N/A

Engine Information

Engines:

2

Engine Type:

Inboard

Manufacturer:

Detroit Diesel

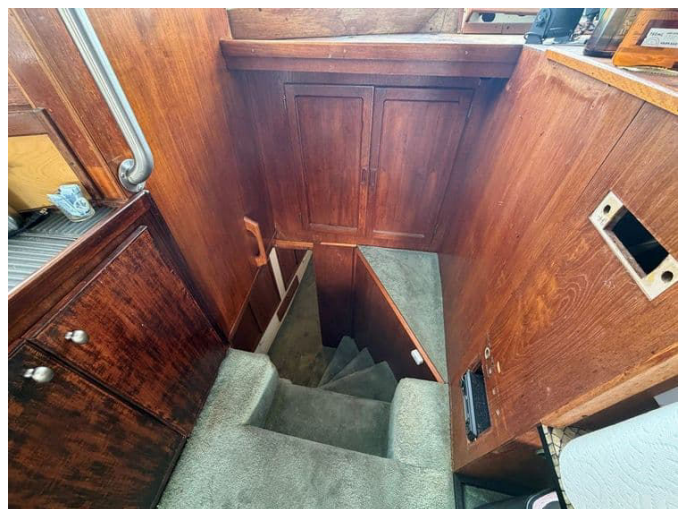
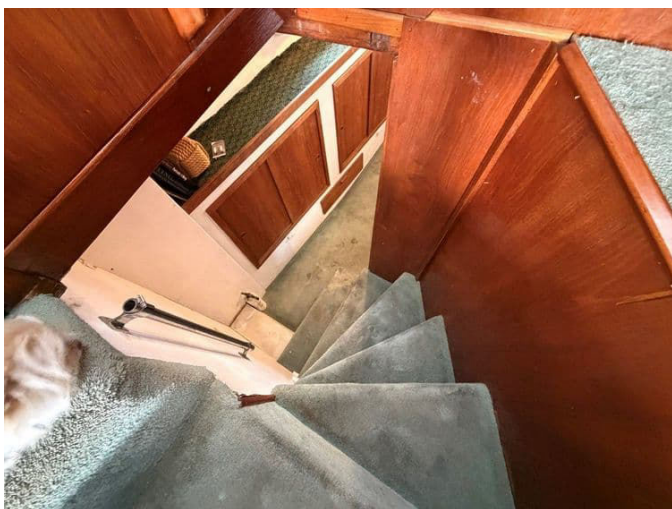
Fuel Type:

Diesel

GALLERY

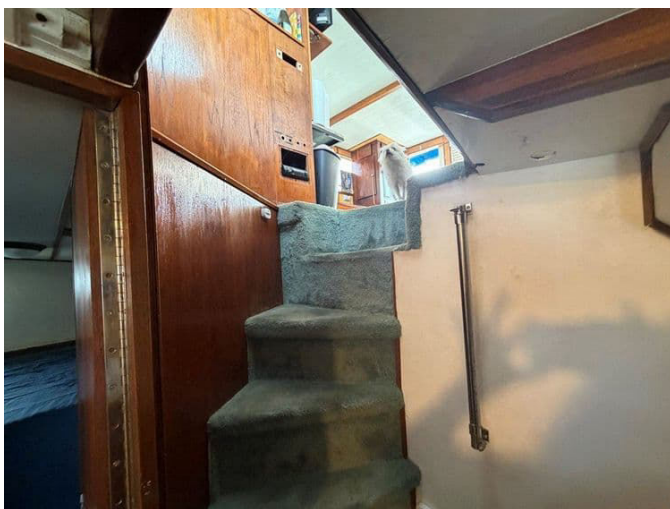


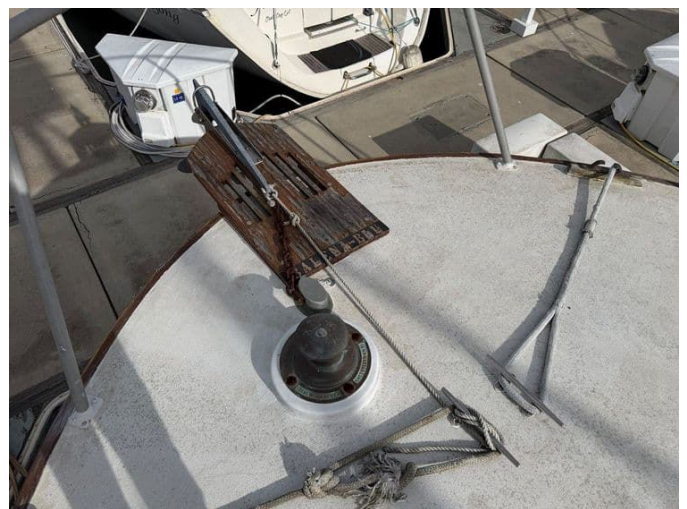
















DETAILED DESCRIPTION

Accommodations (two - spacious staterooms)

Designed with privacy in mind, the sleeping quarters are thoughtfully set apart from the main salon. The master cabin offers a comfortable full/queen berth with generous storage beneath, a large hanging locker for extended-cruise wardrobe, and a flat-screen TV for unwinding at day's end. The forward cabin mirrors this comfort with a starboard-side full/queen berth, ample storage solutions, a large mirror that brightens the space, and its own flat-screen TV. Serving both cabins, the head is fitted with a VacuFlush toilet, a porcelain sink with hot and cold water, and a separate full-size shower that elevates daily routines at sea.

Galley

A practical, seagoing galley anticipates every need, with dual stainless steel sinks for efficient prep and cleanup, generous counter space and storage throughout, a microwave oven for quick meals, and an Oster toaster for easy breakfasts. Provisions are managed effortlessly with two dedicated refrigerators—one small and one large—so fresh and long-stay supplies each have their place.

Navigation and electronics

Confident passage-making comes courtesy of a Nautico VHF Marine unit, a Furuno 1731 radar, a Garmin GPS Map 76, and a Simrad chartplotter, all supported by an AutoPilot—Cetrek Pro Pilot 700—and a precise 4" magnetic compass. Hydraulic steering delivers smooth, predictable control, while an auxiliary instrument panel plus dedicated volt and amp meters keep critical

data front and center for the helmsman.

Salon - open and inviting

An expansive layout sets the tone for effortless entertaining, with large windows and shades filling the space with adjustable natural light. An L-shaped sofa pairs with a coffee table for relaxed gatherings, complemented by a flat-screen TV and speakers for onboard cinema moments. With 7-foot headroom, the salon feels airy and unencumbered, while a dedicated desk and printer station converts this social hub into a capable workspace whenever duty calls.

Engine room

Beneath it all, twin Detroit Diesel 6-71 engines deliver 228 HP each, their freshwater, keel-cooled configuration favoring durability and steady operating temperatures. Direct drive translates torque into straightforward, dependable thrust, while Racor fuel filters safeguard fuel quality and system reliability. A true stand-up engine room offers the generous access owners and mechanics appreciate, making inspections and maintenance comfortable and confident.

Electrical

A shore power inlet streamlines dockside life, ensuring house systems stay powered, charged, and ready whenever you step aboard.

Deck and exterior

Forward on the bow, stainless safety rails trace secure passage along non-skid decking, a hatch skylight brings fresh air and daylight below, and an anchor windlass with a complete rode system makes setting and retrieval efficient.

Practical deck lockers keep gear tidy, while an inflatable skiff stands ready for shore runs. Along the cockpit and side decks, the non-skid continues for confident footing, with well-placed line cleats, easy steps to the raised deck, convenient shore power receptacles, and an outboard motor dedicated to the skiff—everything arranged for seamless days on the water.

Description

1972 Pacifica 48' Motor Yacht – “Balena Blu”. Asking: \$15,250 (Donation Vessel to Scouting America). There comes a moment when life invites you to slow down, stretch out, and savor the present—and “Baby Beluga” is ready to deliver exactly that. Originally commissioned as a 44' Pacifica and professionally extended with a 4' cockpit, she now presents a uniquely spacious 48' platform. The result is a truly wide-open layout rare for her class—equally at home fishing, entertaining, or simply relaxing at anchor. In a phrase: space, space, and more space. From the expansive salon to the generous foredeck and cockpit, and even the stand-up engine room, every area feels open, accessible, and usable—no tight squeezes, no acrobatics, just practical comfort throughout. While she is a running vessel, “Baby Beluga” also shines as a budget-friendly waterfront condo, offering comfort, privacy, and livability without the premium associated with modern yachts.

Key features

Highlights include twin Detroit Diesel 6-71 engines producing 228 HP each with freshwater, keel-cooled systems; a true stand-up engine room for easy maintenance access; a wide open cockpit ideal for fishing or lounging; exceptional storage that surpasses many modern vessels; hydraulic steering for composed control; a dependable VacuFlush head system; a full-size separate shower; and non-skid decking carried throughout for secure footing

in all conditions.

CONTACTS

Shestakov Yacht Sales is a brokerage company specializing in the sale and service of yachts worldwide. The company offers services for buying and selling both new and used motor yachts, sailing vessels, and luxury superyachts. They also provide yacht registration, insurance, technical maintenance, crew selection, and charter organization services across the U.S., Canada, Latin America, the Caribbean, and the Bahamas.

The founder and lead broker of the company is Andrey Shestakov, a licensed and certified expert with extensive experience in marine engineering and shipbuilding.

The company has an extensive network of partnerships with major yacht manufacturers worldwide and provides services in multiple languages, including Russian, Ukrainian, Spanish, and English. The office is in Dania Beach, Florida, USA.

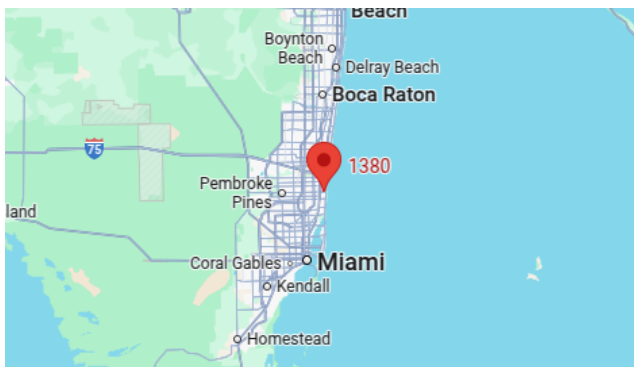
For more information and to view available yachts, you can visit the company's official website: <https://shestakovyachtsales.com>

Contact details

Phone: +1(954)274-4435

Email: andrey@shestakovyachtsales.com

Address



1380 Weeping Willow Way, Hollywood,
Florida 33019