

1978 HATTERAS 42 CONVERTIBLE - HATTERAS



Builder: [Hatteras](#)

Beam: 13' 0" (4.17 m)

Year Built: 1978

Max Draft: 10' 11" (3.33 m)

Model: 42 Convertible

Price: \$139,000 USD Subject to change.

[See full listing on our website](#)

Location: Miami, United States

LOA: 43' 0" (13.11 m)

TABLE OF CONTENTS

OVERVIEW	3
SPECIFICATIONS	4
Basic Information	4
Dimensions	4
Speed, Capacities and Weight	4
Hull and Deck Information	5
Engine Information	5
GALLERY	6
DETAILED DESCRIPTION	13
CONTACTS	16

OVERVIEW

Step aboard this impeccably maintained 1978 Hatteras 42 Convertible and feel the marriage of classic sportfisher lines with carefully considered modern enhancements for comfort and capability. As a flybridge convertible built to chase pelagics offshore, entertain at anchor, or cruise the coastline with poise, she offers a refined interior and current-generation navigation integrated into bluewater-capable systems that sit comfortably in the realm of luxury motor yachts and coastal cruisers.

Repowered in 2009 and showing approximately 1,200 hours since that refit, she pairs her updated engines with a new-for-2009 Phasor generator and delivers a lively 23–25 kn cruise with a 31 kn top end, consuming about 34 GPH at cruising speed. A comprehensive 2023 interior renewal introduced new appliances, LED lighting, fresh soft goods, and a rejuvenated galley, while a full electronics refit that same year set the stage for 2025 enhancements including a Garmin 8612 MFD, JL Audio subwoofers, midrange speakers and amplifiers, and Starlink with an Amazon FireStick for seamless streaming.

The exterior was renewed with an Awlgrip finish completed in 2023, and May 2025 bottom work included fresh antifouling, new cutlass bearings, five underwater lights, and Propspeed protection. Tournament-ready yet supremely livable, this Hatteras remains a timeless, turnkey sportfish convertible.

SPECIFICATIONS

Basic Information

Category:
Motor yachts

Year Built:
1978

Model Year:
1978

Country:
United States

Dimensions

LOA:
43' 0" (13.11 m)

Max Draft:
10' 11" (3.33 m)

Beam:
13' 0" (4.17 m)

Speed, Capacities and Weight

Fuel Capacity:
470 Gallons

Hull and Deck Information

Hull Material:

Fiberglass and Plastic Yachts

Hull Designer:

N/A

Deck Material:

Fiberglass

Interior Designer:

N/A

Hull Configuration:

N/A

Engine Information

Engines:

1

Engine Type:

Inboard

Manufacturer:

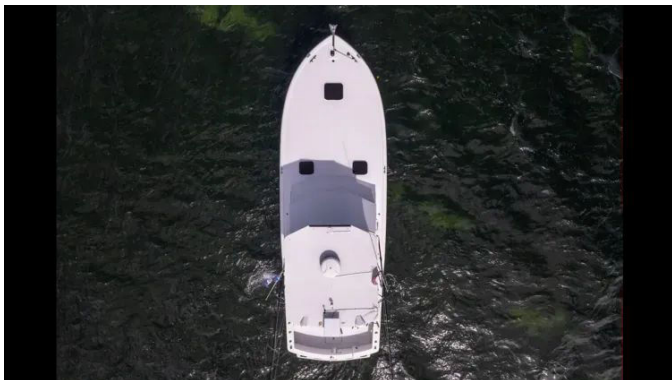
Yanmar

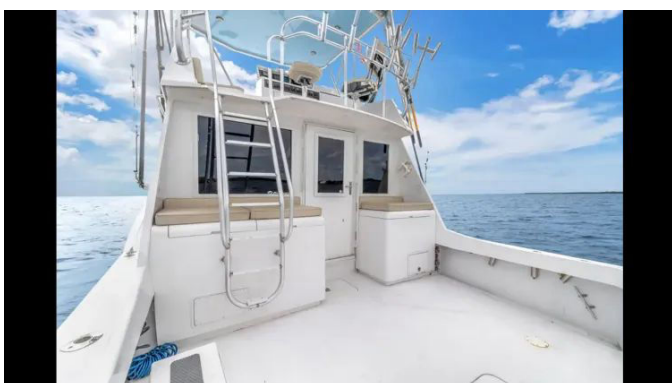
Fuel Type:

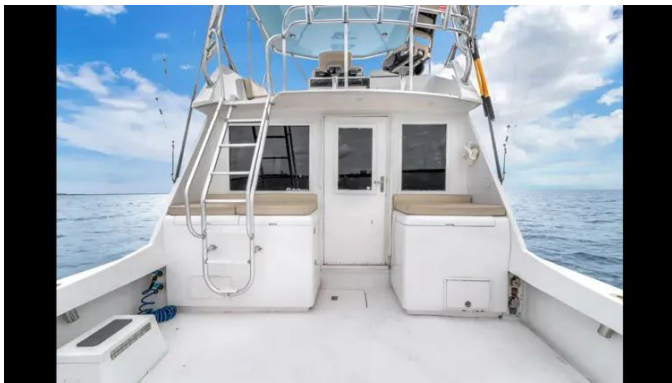
Diesel

GALLERY



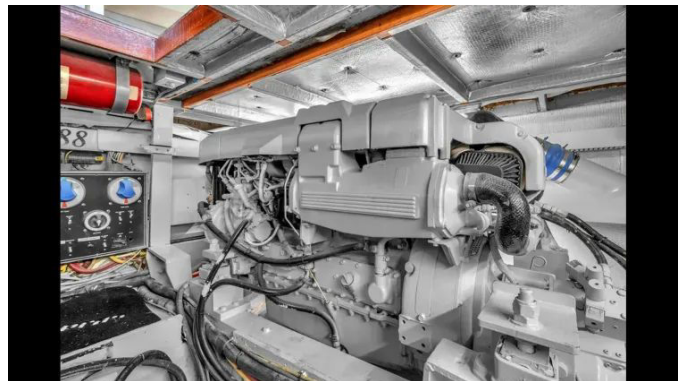
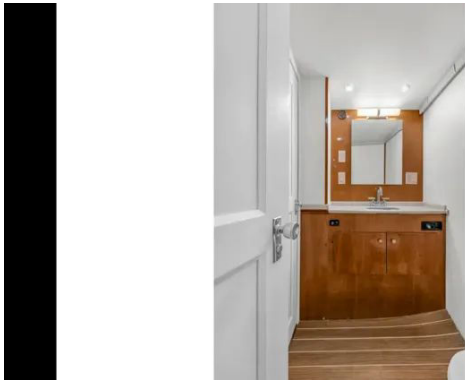












DETAILED DESCRIPTION

Description

Step aboard this beautifully maintained 1978 Hatteras 42 Convertible, a timeless classic thoughtfully upgraded to deliver modern comfort and performance. Re-powered in 2009 with approximately 1,200 hours, she moves with confidence, cruising at 23/25 and reaching 31 at full throttle, while burning 34 GPH at cruise. A new Phasor generator was added in 2009, and a comprehensive interior refit in 2023 refreshed appliances, installed LED lighting, renewed soft goods, and revitalized the galley, all complemented by a complete electronics refit the same year. The helm now benefits from a new Garmin 8612 multi-function display added in 2025, while entertainment and connectivity are elevated by new JL Audio subwoofers, midrange speakers, and amplifiers in 2025, together with Starlink paired to an Amazon FireStick in 2025. Her exterior gleams with a complete Awlgrip paint job in 2023, and underbody care was brought current in May 2025 with bottom paint, new cutlass bearings, five new underwater lights, and PropSpeed applied to running gear. Whether you're chasing pelagics offshore, entertaining at anchor, or cruising a sunlit coastline, this forty-two-foot Hatteras blends pedigree build with fresh systems and tasteful upgrades that are ready to impress.

Other details

The salon welcomes you with vinyl faux-teak flooring and an inviting L-shaped sofa with storage beneath, set opposite a Sony TV. Air conditioning keeps the space temperate, while overhead lights and window shades set the mood for relaxed evenings aboard. Just forward, the galley is both practical and polished, featuring an acrylic molded countertop with a single-compartment

stainless-steel sink, a Whynter refrigerator, two Magic Chef fridges, and a Magic Chef microwave—ample capacity and convenience for extended weekends or long coastal legs. The master stateroom offers restful accommodation for two adults on upper and lower berths with storage below, complemented by a chest of drawers, a hanging locker, and a full head compartment for genuine privacy. A purposeful cockpit stands ready for action with a transom door, a cockpit fridge/freezer and sink, and direct access to the flybridge via the ladder. Up top, the flybridge is sheltered by a hardtop and finished with overhead lighting, forward seating at the helm station, a JL Audio system, and Starlink connectivity for seamless communication and streaming. At the helm, the electronics suite centers on a Garmin display and Garmin radar, with Yanmar digital engine displays, FireBoy suppression engine shutdown control, Simrad autopilot, ACR searchlight control, Icom VHF, FUSION Audio AM/FM, and trim tabs control, placing confident command literally at your fingertips. Below, the machinery complements the build: main engines are Yanmar 6CX530 six-cylinders (port serial M70033, starboard serial M70034; hours: not provided) with engine-room ventilation and emergency shutdown; transmissions are ZF, model ZF 280-1A (serials 20110548 and 20110547); propulsion runs on a 2-inch prop shaft to 4-blade propellers; the generator is a Phasor Marine K3-8 rated at 5 kW (serial 03408). Below the waterline, hydraulically actuated trim tabs, bronze thru-hulls, and strainers/scoops/screens noted but not specified round out the robust underbody systems.

Propulsion

Power is delivered by Yanmar engines, model 6CX530, with a 2009 engine year, providing a total power rating of 530 hp. The installation is inboard and runs on diesel fuel, pairing proven reliability with efficient, effortless thrust.

Specifications

Measured to inspire confidence, this Hatteras spans a length overall of 42.67 ft, with a beam of 13.83 ft and a max draft of 3.42 ft. The hull is constructed in fiberglass for enduring strength and a composed ride, while fuel capacity is 470 gal to support meaningful cruising range between stops.

Disclaimer

The details of this vessel are offered in good faith but without guarantee or warranty as to accuracy, nor as to the vessel's condition. Buyers are encouraged to have their agents or surveyors investigate any particulars they wish to validate. This vessel is offered subject to prior sale, price change, or withdrawal without notice.

CONTACTS

Shestakov Yacht Sales is a brokerage company specializing in the sale and service of yachts worldwide. The company offers services for buying and selling both new and used motor yachts, sailing vessels, and luxury superyachts. They also provide yacht registration, insurance, technical maintenance, crew selection, and charter organization services across the U.S., Canada, Latin America, the Caribbean, and the Bahamas.

The founder and lead broker of the company is Andrey Shestakov, a licensed and certified expert with extensive experience in marine engineering and shipbuilding.

The company has an extensive network of partnerships with major yacht manufacturers worldwide and provides services in multiple languages, including Russian, Ukrainian, Spanish, and English. The office is in Dania Beach, Florida, USA.

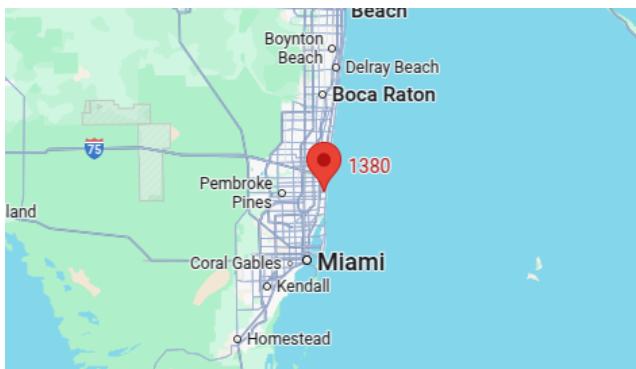
For more information and to view available yachts, you can visit the company's official website: <https://shestakovyachtsales.com>

Contact details

Phone: +1(954)274-4435

Email: andrey@shestakovyachtsales.com

Address



1380 Weeping Willow Way, Hollywood,
Florida 33019