

## OPULENCE - RIVA YACHT



**Builder:** [RIVA YACHT](#)

**LOA:** 44' 0" (13.40 m)

**Year Built:** 2014

**Beam:** 12' 0" (3.88 m)

**Model:** 44' Rivarama Super

**Max Draft:** 4' 3" (1.30 m)

**Price:** \$684,137.29 USD Subject to change.

**Cruising Speed:** 36 Knots (41.43 MPH)

[See full listing on our website](#)

**Location:** Rhodes, Greece

**Max Speed:** 41 Knots (47.18 MPH)

# TABLE OF CONTENTS

**OVERVIEW ..... 3**

**SPECIFICATIONS ..... 5**

    Basic Information ..... 5

    Dimensions ..... 5

    Speed, Capacities and Weight ..... 6

    Accommodations ..... 6

    Hull and Deck Information ..... 6

    Engine Information ..... 7

**GALLERY ..... 8**

**DETAILED DESCRIPTION ..... 10**

**CONTACTS ..... 12**

---

## OVERVIEW

---

A taut, assured silhouette sculpted for lively passages, this 2014, 44-foot performance motor yacht pairs Mediterranean elegance with meticulous naval architecture. Built in resilient fiberglass/GRP and featuring a true planing hull, she responds with brisk acceleration and precise control, transforming island runs into spirited escapes and extended coastal voyages into effortless pleasure.

Propelled by twin MAN inboard diesel engines, she reaches an exhilarating top speed of 41 knots and sustains a composed cruising pace of 36 knots, allowing rapid, comfortable miles under way. A capacious 348.71-gallon fuel tank provides generous range, while 52.83 gallons of freshwater support relaxed days at anchor. With a 12-foot beam she stands broad and stable through sea motion, and a shallow draft of just over 4.2 feet grants access to secluded coves and the chic harbors of Greece and the wider Mediterranean.

The deck is arranged for untroubled alfresco living—ample sunning platforms and convivial seating encourage lazy afternoons and leisurely meals afloat, while a low-profile coachroof reinforces the boat's athletic elegance. The cockpit is laid out for sociable day cruising and easy entertaining, with all controls and furnishings oriented to make life aboard intuitive and comfortable.

Below decks the atmosphere is serene and contemporary, conceived to maximize light and volume. Clever storage keeps short cruises tidy, and a well-equipped head ensures comfort during longer retreats. A separate crew cabin preserves privacy and service or converts to useful utility space when cruising as a couple or with friends.

Craftsmanship is evident throughout: the GRP deck and hand-finished fiberglass hull deliver a solid, quiet feel underway, translating raw power into a ride that is both responsive and reassuring. Whether carving a clean wake

between islands or slipping into a sunset berth, she reads as a refined, modern sports cruiser—purposeful, graceful, and unmistakably Mediterranean.

Lying in Greece and available for immediate enjoyment, this 44' motor yacht embodies the desirable mix of speed, style, and simplicity—equally suited as a dynamic dayboat or a low-maintenance weekender.

Keywords: Motor Yacht, Express Cruiser, Sports Cruiser, Performance Cruiser, Planing Hull, GRP, Fiberglass, Twin MAN Diesel, Inboard, Mediterranean, Dayboat, Weekender.

---

# SPECIFICATIONS

---

## Basic Information

---

**Category:**  
Motor yachts

**Year Built:**  
2014

**Sub category:**  
Motor Yacht

**Country:**  
Greece

**Model Year:**  
2014

## Dimensions

---

**LOA:**  
44' 0" (13.40 m)

**Max Draft:**  
4' 3" (1.30 m)

**Beam:**  
12' 0" (3.88 m)

## Speed, Capacities and Weight

---

**Cruise Speed:**

36 Knots (41.43 MPH)

**Water Capacity:**

52.83 Gallons

**Max Speed:**

41 Knots (47.18 MPH)

**Fuel Capacity:**

348.71 Gallons

**Gross Tonnage:**

15 Pounds

## Accommodations

---

**Total Heads:**

1

**Crew Cabin:**

1

## Hull and Deck Information

---

**Hull Material:**

Fiberglass and Plastic Yachts

**Hull Designer:**

N/A

**Deck Material:**

GRP

**Interior Designer:**

N/A

**Hull Configuration:**

Planing

## Engine Information

---

**Engines:**

2

**Engine Type:**

Inboard

**Manufacturer:**

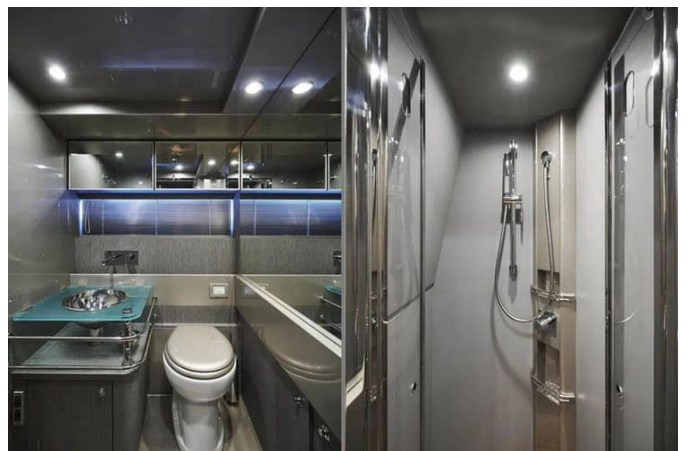
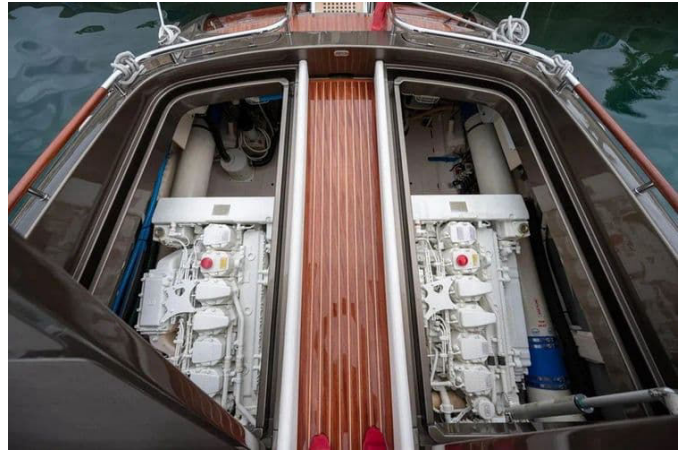
MAN

**Fuel Type:**

Diesel

# GALLERY





---

# DETAILED DESCRIPTION

---

## Electrical equipment

---

Engineered for self-sufficiency, the yacht's electrical architecture pairs a brand-new Kohler 6 kW generator showing just five engine hours with a 220V shore power inlet protected by an isolation transformer. Automatic multi-bank smart chargers manage both 24V and 12V systems, feeding dedicated service batteries, engine start batteries, and an independent bow thruster battery, while a reliable inverter delivers seamless AC continuity offshore. LED lighting illuminates every interior and exterior space with efficiency, supported by electric bilge pumps with automatic operation and manual override, and automatic engine-room ventilation fans that keep temperature and airflow precisely in check. A comprehensive suite of onboard electronics enhances every passage: depthsounder, log-speedometer, navigation center, plotter, GPS, autopilot and compass are complemented by AIS, VHF, radio, cockpit speakers, CD and DVD players, creating an integrated helm and entertainment experience you can trust.

## Deck equipment

---

On deck, the yacht indulges with full teak decking across cockpit, bow, side decks and swim platform, setting a warm, grippy stage for effortless movement. A hydraulic gangway extends boarding elegance, while an electric anchor windlass with remote control and a stainless-steel anchor make short work of ground tackle. Electric aft mooring winches to port and starboard, together with robust mooring cleats, streamline docking. Entertaining is elevated by a cockpit wet bar with sink, electric grill and icemaker, served alongside a foldable teak table. Generous sunpads forward and aft, upholstered in premium waterproof materials, invite unhurried lounging, and

a stainless-steel telescopic swim ladder and cockpit shower transform every swim into a seamless pleasure.

## Navigation and communication equipment

---

The helm is anchored by a clear GPS/plotter and confident autopilot guidance, supported by an integrated Raymarine depth sounder, log and speed readouts that paint a precise picture beneath and ahead. Communication is secure via a VHF radio with DSC, with a magnetic compass always standing by for traditional reference. MAN digital engine displays deliver live powerplant intelligence, while a bespoke Riva switch panel and analog engine gauges provide tactile, redundant control with unmistakable style.

## Domestic equipment

---

Comfort on board is climate-controlled by reverse-cycle air conditioning serving both cabin and cockpit, with hot water supplied by a 220V heater and an engine heat exchanger. The galley is thoughtfully equipped with a refrigerator, stainless-steel sink with pressurized hot and cold water, a two-burner electric ceramic hob and a built-in microwave oven, while a dedicated drinks fridge in the cockpit keeps refreshments close. An electric marine WC discharges to a holding tank, backed by a freshwater pump and accumulator tank for steady pressure throughout. Entertainment flows through a quality sound system with speakers in cabin and cockpit, complemented by a TV, and shade is on demand beneath the bimini top.

# CONTACTS

---

Shestakov Yacht Sales is a brokerage company specializing in the sale and service of yachts worldwide. The company offers services for buying and selling both new and used motor yachts, sailing vessels, and luxury superyachts. They also provide yacht registration, insurance, technical maintenance, crew selection, and charter organization services across the U.S., Canada, Latin America, the Caribbean, and the Bahamas.

The founder and lead broker of the company is Andrey Shestakov, a licensed and certified expert with extensive experience in marine engineering and shipbuilding.

The company has an extensive network of partnerships with major yacht manufacturers worldwide and provides services in multiple languages, including Russian, Ukrainian, Spanish, and English. The office is in Dania Beach, Florida, USA.

For more information and to view available yachts, you can visit the company's official website: <https://shestakovyachtsales.com>

## Contact details

---

**Phone:** +1(954)274-4435

**Email:** [andrey@shestakovyachtsales.com](mailto:andrey@shestakovyachtsales.com)

## Address

---



1380 Weeping Willow Way, Hollywood,  
Florida 33019