



SHESTAKOV

Yacht Sales

## SYLPHIDE - METALCRAFT MARINE



**Builder:** [METALCRAFT MARINE](#)

**LOA:** 44' 0" (13.41 m)

**Year Built:** 1985

**Beam:** 12' 0" (3.81 m)

**Model:** N/A

**Max Draft:** 11' 6" (3.50 m)

**Price:** \$99,000 USD Subject to change.

**Cruising Speed:** 7 Knots (8.06 MPH)

[See full listing on our website](#)

**Location:** Chesapeake, United States

**Max Speed:** 9.25 Knots (10.64 MPH)

If you would like to buy a yacht **SYLPHIDE - METALCRAFT MARINE** or would like help answering any questions concerning purchasing, selling, or chartering a yacht, please call **+1(954)274-4435** or click here on <https://shestakovyachtsales.com>

---

# TABLE OF CONTENTS

---

<b>OVERVIEW .....</b>	<b>3</b>
<b>SPECIFICATIONS .....</b>	<b>4</b>
Basic Information .....	4
Dimensions .....	4
Speed, Capacities and Weight .....	4
Accommodations .....	4
Hull and Deck Information .....	5
Engine Information .....	5
<b>GALLERY .....</b>	<b>6</b>
<b>DETAILED DESCRIPTION .....</b>	<b>11</b>
<b>CONTACTS .....</b>	<b>18</b>

## OVERVIEW

---

Motor Yacht SYLPHIDE is a 44-foot, all-aluminum cruiser now offered for sale, an unusually private build from MetalCraft Marine, the shipbuilder renowned for fire, patrol and military craft that has been sensitively reimagined for yachting. Conceived as a compact passagemaker/trawler yacht, she comfortably sleeps up to four guests in two staterooms and presents a conservative air draft of about 11 feet for confident bridge clearance. Propelled by a single Perkins diesel, SYLPHIDE maintains an economical cruising speed of 7 knots while consuming roughly 1 gallon per hour, making her exceptionally efficient for coastal exploration. Her very low profile—roughly 11 to 13 feet overall—permits easy access to the ICW, narrow canals and inland waterways, and her robust hull of 5083 marine-grade aluminum is built to commercial standards for superior durability, corrosion resistance and lasting structural integrity. The single-diesel arrangement yields enduring range—approximately 1,500 nautical miles—while a thorough interior refit in 1995 refined liveboard comfort into a practical two-stateroom, two-head plan that balances utility with understated elegance. As one of the scarce private yachts to come from MetalCraft Marine, SYLPHIDE blends a workboat pedigree with a polished presence, a distinctive aluminum pocket explorer that is economical, quiet-running and purpose-built for serene passagemaking.

# SPECIFICATIONS

---

## Basic Information

---

**Model Year:**  
1985

**Country:**  
United States

**Year Built:**  
1985

## Dimensions

---

**LOA:**  
44' 0" (13.41 m)

**Max Draft:**  
11' 6" (3.50 m)

**Beam:**  
12' 0" (3.81 m)

## Speed, Capacities and Weight

---

**Cruise Speed:**  
7 Knots (8.06 MPH)

**Water Capacity:**  
158 Gallons

**Max Speed:**  
9.25 Knots (10.64 MPH)

**Fuel Capacity:**  
475 Gallons

## Accommodations

---

**Total Heads:**  
2

## Hull and Deck Information

---

**Hull Material:**  
Aluminum Yachts

**Hull Designer:**  
N/A

**Deck Material:**  
Aluminum

**Interior Designer:**  
N/A

**Hull Configuration:**  
N/A

## Engine Information

---

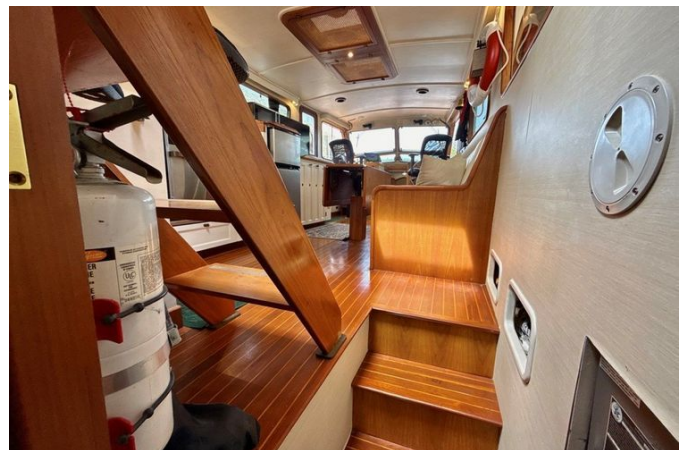
**Engines:**  
1

**Engine Type:**  
Inboard

**Manufacturer:**  
Perkins

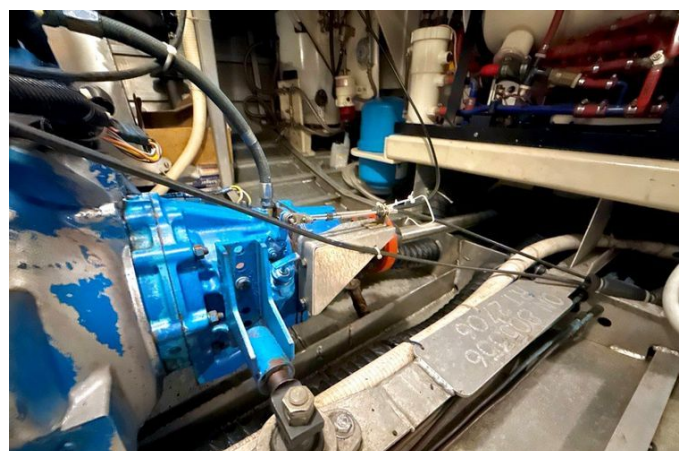
**Fuel Type:**  
Diesel

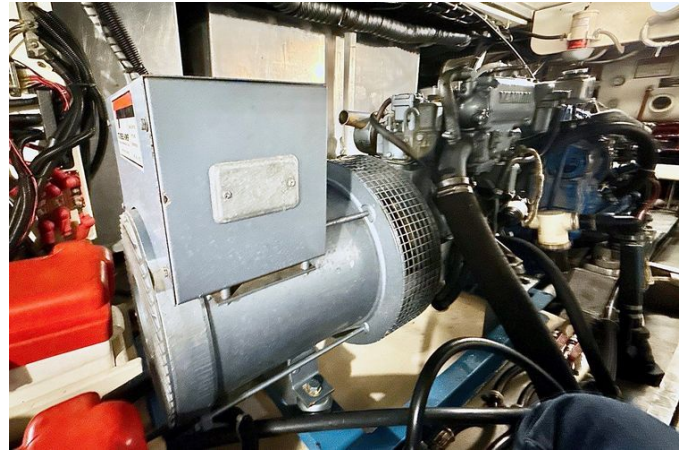
# GALLERY











---

# DETAILED DESCRIPTION

---

## Overview

---

Boarding SYLPHIDE is effortless through port or starboard gates that open onto expansive, full walkaround decks finished with updated 3M nonskid to ensure surefooted movement. A refined combination of aluminum and stainless-steel stanchions, fitted with vinyl-wrapped lifelines, guides you forward to the bow, where a robust aluminum pulpit and thoughtfully specified ground tackle reinforce the yacht's purposeful, seagoing character.

Aft, a raised cockpit offers both practical function and an inviting place to linger, protected by a newer Bimini top and appointed with removable seating, a teak table, and integrated propane storage beneath the bench seating. From the transom a boarding ladder descends to a teak swim platform, while a simple block-and-tackle davit system simplifies tender handling; the AB Inflatable tender is currently kept on its own lift at the dock and is shown separately in the photographs.

Stepping inside from the aft deck and down a few steps reveals a warm, highly usable interior trimmed throughout in teak and ash sole. The main salon provides an elegant living area with a comfortable settee, built-in storage and a high-low table that adapts effortlessly for dining or casual use, all complemented by large windows that flood the space with natural light and afford excellent visibility.

To port the galley is laid out in an efficient L-shaped arrangement, offering generous counter space, drawers and lockers well suited for extended cruising, while opposite to starboard additional storage and systems access are arranged with clear, functional intent.

Forward of the salon, guest accommodations are arranged for privacy and comfort: a forward stateroom features a V-berth with storage beneath,

opening portlights and an overhead hatch, and just aft there is a separate stall shower to port and an enclosed head to starboard, each fitted with proper ventilation and durable, practical finishes. Additional lockers, a hanging locker and a compact desk/navigation area further enhance the utility of this forward section.

The master stateroom, reached via its own companionway aft, is a private owner's retreat centered on a centerline queen berth with abundant drawer storage, hanging lockers and built-in bedside cabinetry. Multiple opening portlights and an overhead hatch provide excellent natural light and ventilation, and the ensuite head, complete with vanity, sink and extra storage, finishes the suite in thoughtful style.

Climate comfort aboard SYLPHIDE is assured by two-zone reverse-cycle heat and air conditioning, augmented by a separate furnace heat system, making the yacht exceptionally adaptable to a broad range of cruising climates.

## Saloon

---

A teak-and-ash sole lends the space a refined, inviting warmth beneathfoot; the settee, reupholstered in 2022, encourages relaxed entertaining around the attached table, while built-in lockers and generous storage keep the saloon impeccably organized.

## Galley

---

The L-shaped galley up has been meticulously outfitted to make cooking underway both effortless and refined, boasting a durable tile countertop and a generously sized stainless-steel sink accompanied by a separate drinking faucet. Culinary operations are centered on a two-burner Force 10 propane stove with oven, protected by a Shadow II LPG monitor/control, while a countertop pellet ice maker ensures chilled refreshments are always on hand.

Fresh provisions are maintained in the RecPrar AC/DC refrigerator, and fast, convenient meal preparation is supported by a Black & Decker microwave alongside a dedicated coffee maker. An adjustable drop-leaf table offers seamless transformation from extra workspace to an intimate dining surface, and al fresco dining is enhanced by a Cuisinart rail-mounted grill.

## Entertainment equipment

---

Onboard entertainment is anchored by a Vizio flat-screen television that delivers immersive viewing, while a hand-polished Weems & Plath brass barometer and thermometer provide classic maritime instrumentation, together creating an elegant fusion of leisure and precise, timeless nautical craftsmanship.

## Accommodations

---

The private aft stateroom is luxuriously appointed around a centerline queen-sized berth and includes an ensuite head for complete privacy. Built-in bedside tables with locker storage flank the berth, while teak-louvered hanging lockers, a dresser with five drawers, six white cabinets and a teak vanity provide ample, beautifully finished stowage. The cabin is bright and airy thanks to four opening portlights and one opening overhead hatch that deliver natural light and ventilation.

Forward, a flexible V-berth outfitted with dedicated storage and a filler cushion creates adaptable sleeping arrangements, with a teak-louvered anchor locker and practical net shelves close at hand. Ventilation is assured by two opening portlights and one overhead hatch. Along the forward companionway a hanging locker and a convenient desk are positioned beneath one overhead hatch; a full-size stall shower with an opening portlight to port is balanced by a head to starboard complete with a vanity and its own opening portlight, and

dedicated engine room access is provided for service and maintenance.

## Helm

---

The lower helm, located forward to starboard, places the captain at a richly appointed command station featuring a Garmin GPSmap XSV multifunction display paired with Garmin Radar, a Wagner SE-Autopilot Gen2 and a Wagner gimbaled compass for exacting navigation. Communications are handled by a Standard Horizon Spectrum+ VHF marine radio alongside a Standard Horizon hx150, while a B&G Network Quad provides immediate readouts of speed, depth, temperature and elapsed time. Engine gauges and AIS remain prominently displayed to monitor critical systems, and visibility is enhanced by a Marinco Spotlight with D-pad and remote—new in 2026—offering precise, responsive illumination. The upper helm, aft to port, delivers effortless control through hydraulic steering and Ultraflex gear/throttle controls, augmented by oil pressure and engine temperature indicators plus a tachometer, and the removable Pompanette helm chair ensures the captain can achieve the ideal vantage for every passage.

## Deck equipment

---

The foredeck is appointed for ease and confidence, with a Rocna anchor seated on a 3/16-inch chain and recovered by a Muir electric windlass with foot-control retrieval, the rode running over an aluminum pulpit fitted with an anchor roller, while a Danforth auxiliary anchor is conveniently stowed for backup. Safety features include polished stainless steel stanchions with vinyl-wrapped guide wire, aluminum safety rails aft and secure port and starboard boarding gates, all arranged to create unobstructed movement around the deck. Underfoot, aluminum decking is finished with 3M EVA nonslip foam flooring installed in 2024, combining comfort and sure footing, and a

transom gate with stainless steel ladder opens to a teak swim platform with an additional collapsing swim ladder for effortless water access. Shade is provided by an elegant green bimini, and snap-on hatch screens allow cooling breezes without compromise, while the helm is equipped with a two-panel windshield with opening vents, two electric windshield wipers and a Springfield captain's chair for assured command. Practical systems and conveniences are thoughtfully positioned, including a raw water washdown, fenders and lines, an exterior table and chairs for alfresco dining, a propane locker aft and an LPG locker bench seat for secure storage. A folding mast allows flexible air clearance—24 ft with the mast up and 11 ft with it down—and offshore safety is further reinforced by an onboard Life-Sling.

## Mechanical equipment

---

Propulsion is entrusted to an 85 hp Perkins 4.236M direct-drive diesel engine displaying 2,729 hours as of April 07, 2026, seamlessly paired with a Borg-Warner Velvet Drive transmission to deliver smooth, dependable thrust. Helm inputs are translated with finesse through Ultraflex cable gear and throttle and refined hydraulic steering, while the propulsive train is built for durability and efficiency with a Lasdrop dripless shaft seal, a one and three-quarter inch stainless steel shaft fitted with a shaft saver, Thorden bearings, and a three-blade 24 x 11 bronze propeller. Comfort aboard is assured by two Dometic reverse-cycle heat and air-conditioning units augmented by furnace heat, and the fuel system inspires confidence thanks to a fuel pump and injectors refreshed in 2025, a Racor 500FG fuel filter and an Algae-X fuel polisher. Safety and serviceability are enhanced by portable fire suppression throughout the vessel and two bilge pumps with a well pump separator. Practical systems include a Vacuflush head, a Nautilus MKII Desalinator watermaker, a complement of assorted spare parts and Ameron Amercoat 235, while underwater exhaust and a 19.9-gallon hot water heater

contribute to a quiet, capable and comprehensively outfitted mechanical suite.

## Electrical equipment

---

The yacht's electrical architecture is a refined 120VAC / 12VDC, 60 Hz system centered on a Yanmar 2GM20F engine coupled to an LSA41 alternator, with the propulsion package recording 299 hours as of April 07, 2026. Shore power is delivered by a 50A connection and 50 ft shore cord, thoughtfully routed through an Acme Electric isolation transformer to provide conditioned, protected input. Onboard energy is stored in a bank of six ProEnergy BB AGM 6V house batteries alongside a dedicated AGM engine start battery, while a Freedom Marine Freedom25 2500W inverter/charger—installed in 2023—manages AC conversion and battery charging with efficiency. System monitoring is handled by a Heart Interface Link-2000-R, and the alternator received a complete rebuild in 2026 to assure consistent, dependable output across the electrical network.

## Build description

---

Crafted from marine grade 5083 aluminum, the hull is formed in resilient 1/4 inch plate while the deck, deckhouse, bottom stringers, topside frames and futtocks are precisely fabricated from 3/16 inch plate of the same alloy, and deck beams and frames are likewise executed in 1/4 inch aluminum to ensure exceptional rigidity and continuous structural integrity. The protective coating sequence begins with an Interprotect hull primer, followed by an Amercoat 235 epoxy midcoat and finished with a premium antifouling hull paint, while all areas above the waterline — including the topsides of the hull, decks and deckhouse — are sealed in PSX 700 epoxy to preserve a lasting gloss and enhanced resilience.

## Tender

---

An elegant 2018 AB Inflatables Defender measuring 10 ft 6 in (HIN: XMO51015A818) serves as the yacht's dedicated tender, powered by a 2019 Yamaha four-stroke outboard delivering 6 horsepower for reliable, smooth performance. A stern-mounted block and tackle facilitates effortless handling and recovery, and the tender is conveyed with a Virginia Title.

## Broker comments

---

SYLPHIDE presents an alluring alternative to conventional production trawlers, marrying commercial-grade construction with exceptional efficiency and the rare ability to reach waterways that many vessels cannot access. Her distinctive pedigree, enhanced by a carefully considered refit, yields a capable, low-cost cruising platform brimming with character—ideal for the seasoned mariner intent on cruising differently rather than following convention. It is unusual to encounter a boat offering this calibre of build quality, range and versatility arriving on the market at such an attractive price point.

# CONTACTS

---

Shestakov Yacht Sales is a brokerage company specializing in the sale and service of yachts worldwide. The company offers services for buying and selling both new and used motor yachts, sailing vessels, and luxury superyachts. They also provide yacht registration, insurance, technical maintenance, crew selection, and charter organization services across the U.S., Canada, Latin America, the Caribbean, and the Bahamas.

The founder and lead broker of the company is Andrey Shestakov, a licensed and certified expert with extensive experience in marine engineering and shipbuilding.

The company has an extensive network of partnerships with major yacht manufacturers worldwide and provides services in multiple languages, including Russian, Ukrainian, Spanish, and English. The office is in Dania Beach, Florida, USA.

For more information and to view available yachts, you can visit the company's official website: <https://shestakovyachtsales.com>

## Contact details

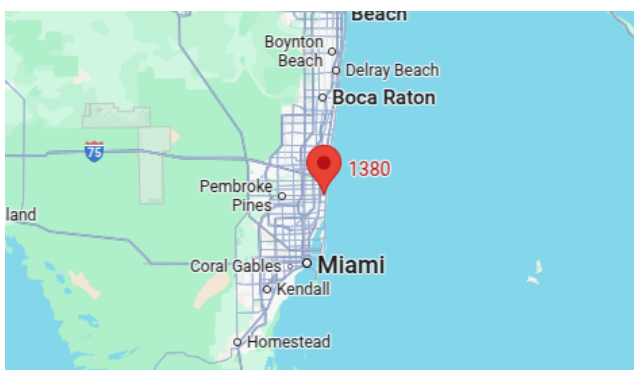
---

**Phone:** +1(954)274-4435

**Email:** [andrey@shestakovyachtsales.com](mailto:andrey@shestakovyachtsales.com)

## Address

---



1380 Weeping Willow Way, Hollywood,  
Florida 33019