

## ROBIN'S NEST - VANQUISH YACHTS



**Builder:** [VANQUISH YACHTS](#)

**LOA:** 45' 0" (13.72 m)

**Year Built:** 2023

**Beam:** 13' 0" (4.09 m)

**Model:** VQ45 Veloce Hardtop

**Max Draft:** 9' 10" (3 m)

**Price:** \$1,470,000 USD Subject to change.

**Cruising Speed:** 40 Knots (46.03 MPH)

[See full listing on our website](#)

**Location:** Boca Raton, United States

**Max Speed:** 60 Knots (69.05 MPH)

---

# TABLE OF CONTENTS

---

<b>OVERVIEW .....</b>	<b>3</b>
<b>SPECIFICATIONS .....</b>	<b>5</b>
Basic Information .....	5
Dimensions .....	5
Speed, Capacities and Weight .....	5
Accommodations .....	6
Hull and Deck Information .....	6
Engine Information .....	6
<b>GALLERY .....</b>	<b>7</b>
<b>DETAILED DESCRIPTION .....</b>	<b>14</b>
<b>CONTACTS .....</b>	<b>18</b>

## OVERVIEW

---

"Robin's Nest" is among the most fully outfitted VQ45 examples ever produced, a testament to Dutch craftsmanship with a rugged, all aluminum, fully welded hull that celebrates the overbuilt philosophy of a true luxury motor yacht. Equal parts sport yacht and open yacht with a superyacht tender pedigree, she marries sculptural lines to purposeful engineering, delivering a performance cruiser that feels unshakeably solid offshore and impeccably refined at the dock.

Propulsion comes from quad Mercury Verado 600 hp V12 outboards, which unleash exhilarating acceleration, instant hole shot, and a top end in excess of 60 knots. Precision joystick control with Skyhook station keeping and a bow thruster make close quarters maneuvering instinctive, while a Seakeeper 6 gyro stabilizer and ZipWake automatic interceptor tabs provide composed behavior both on passage and at anchor. The combined effect is an express cruiser that carves through seas, tracks true, and settles with the calm demeanor of a far larger motor yacht.

The deck layout is designed for effortless entertaining and natural flow: deep, comfortable seating populates the cockpit and foredeck; full walkaround side decks lead forward to expansive seating and a generous sunpad; and a bespoke hardtop with a three sided glass enclosure shelters an air conditioned helm for comfort in inclement weather. Swing in boarding doors to port and starboard simplify side access, while faux teak decking sweeps from bow to stern, lending warmth and contemporary character. Below decks the cabin is remarkably commodious for a 45 foot dayboat and weekend cruiser, offering a full berth, a fitted galley, hull side windows that admit daylight, and a private head with a separate shower for uncomplicated overnighting.

The owner specified an uncompromising electronics and systems package: a

full Garmin navigation suite, an upgraded JL Audio system that bathes the open cockpit in rich, clear sound, and a FLIR thermal camera to extend confident operation after dark. LED underwater lights create a striking glow at anchor, and a Besenzoni teak passerelle/swim ladder with articulating hydraulic action enhances boarding and swim off elegance. A through hull anchor and windlass finalize the offshore ready fitout.

Electrical and power management are premium: AC/DC capability via a Northern Lights diesel generator, plus a comprehensive Victron Energy system with inverter for quiet, generator free AC power. The EmpirBus digital switching system integrates and centralizes control for intuitive operation. Captain maintained since new and fully current on service, with a recent bottom job completed 1/26, this distinctive Vanquish turns heads in any harbor—fast, refined, and undeniably luxurious, part open dayboat, part express cruiser, and wholly unforgettable.

# SPECIFICATIONS

---

## Basic Information

---

**Category:**  
Motor yachts

**Year Built:**  
2023

**Sub category:**  
Cruisers

**Country:**  
United States

**Model Year:**  
2023

## Dimensions

---

**LOA:**  
45' 0" (13.72 m)

**Max Draft:**  
9' 10" (3 m)

**Beam:**  
13' 0" (4.09 m)

## Speed, Capacities and Weight

---

**Cruise Speed:**  
40 Knots (46.03 MPH)

**Water Capacity:**  
53 Gallons

**Max Speed:**  
60 Knots (69.05 MPH)

**Fuel Capacity:**  
793 Gallons

## Accommodations

---

**Total Heads:**

1

## Hull and Deck Information

---

**Hull Material:**

Aluminum Yachts

**Hull Designer:**

N/A

**Deck Material:**

Aluminum

**Interior Designer:**

N/A

**Hull Configuration:**

Deep Vee

## Engine Information

---

**Engines:**

4

**Engine Type:**

Outboard

**Manufacturer:**

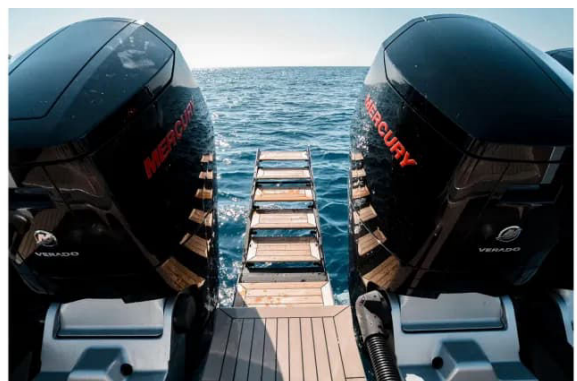
Mercury

**Fuel Type:**

Gas/Petrol

# GALLERY

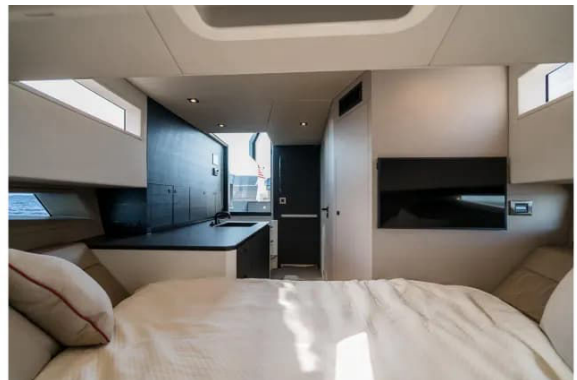














---

## DETAILED DESCRIPTION

---

### Transom

---

At the transom, quad Mercury 600 V12 engines showing 450 hours deliver commanding performance, mastered with intuitive joystick control and Skyhook station-keeping for effortless maneuvers. ZipWake interceptor trim tabs fine-tune attitude and efficiency, while underwater lights—three to port and three to starboard—ignite the wake with a striking glow. A Besenzoni articulating passerelle (up/down) with teak steps and removable rails welcomes you aboard in style over a faux teak sole. Shore power outlet, freshwater shower, and discreet courtesy lighting enhance comfort at the waterline, complemented by integrated speakers that carry your soundtrack from dock to anchorage.

### Aft deck

---

The aft deck transforms relaxation into an art form, with an electric aft sunshade that deploys at a touch to temper the midday sun. Deep U-shaped seating with generous storage embraces a large table fitted with five cupholders, all set over a handsome faux teak sole. The mood is refined by speakers and warm courtesy lighting, while pop-up cleats stand ready to tidy lines without interrupting the clean, modern aesthetic.

### Enclosed helm deck

---

Command with confidence from the enclosed helm deck, wrapped in a three-sided glass enclosure with two windshield wipers for clarity in all conditions. Twin Garmin 8616 MFDs anchor a professional-grade suite that includes a Garmin VHF, a GT51M transducer, and an autopilot integrated

through Mercury. Precision Mercury throttles, an engine display, and a joystick with Skyhook put nuanced control at your fingertips. Helm seating for two features fold-down footrests, cupholders, and storage, with an Isotherm refrigerator tucked below, while dedicated helm air conditioning keeps the space perfectly tempered. A sliding entry door leads to the cabin, crowned by a small Garmin MFD above for quick checks on the go.

## Side decks

---

Moving forward is secure and seamless along side decks finished in faux teak, with pop-up cleats and courtesy lighting elegantly integrated. Aft to port, a dedicated fender storage compartment keeps gear orderly and close at hand. Recessed fills for water, diesel, and gasoline streamline service stops, while swing-in boarding doors to port and starboard make stepping aboard simple in any berth.

## Bow

---

The bow invites both sun and conversation, beginning with an XL sunpad framed by six recessed cupholders and upright seating at its forward edge. Ahead, a forward U-shaped lounge encircles a table with four cupholders, all served by speakers, 12V outlets, and gentle courtesy lighting. Practicality meets poise with a thru-hull anchor, windlass and remote, removable running lights, and a manual removable sunshade. A bow thruster stands ready to finesse close-quarters handling with confident precision.

## Cabin

---

Step below via three faux teak steps onto a faux teak sole with removable carpet, where natural light pours through hull-side windows. To starboard, a

well-appointed galley features an Isotherm ice maker, microwave, sink, and ample storage, complemented by an Isotherm refrigerator aft on the centerline. Shipwide systems come alive on a dedicated Garmin display, while a JL Audio stereo sets the ambiance. Forward, a full berth awaits with courtesy lights, cupholders, and outlets, facing a flat screen TV mounted on the forward port bulkhead; a hanging locker to port keeps attire crisp. The full head includes a sink, vanity, and storage, with a separate shower fitted with wand and seat for unhurried comfort underway.

## Hard top

---

Above it all, the hard top carries a custom mast supporting a Garmin closed-array radar, spotlight, EPIRB, a removable\* full-size LED light bar, a FLIR thermal camera, and a KVH SAT TV dome, with an anchor light crowning the rig. An aft retractable sunshade extends cool comfort over the deck, while recessed lights and sunroofs with covers let you tailor the ambiance from dawn to dusk.

## Mechanical room (lazzarette)

---

Beneath the swim platform seating, a hydraulically actuated access hatch opens to a meticulously organized mechanical room. Power resilience comes from a Northern Lights diesel generator with 550 hours feeding an Odyssey battery bank through Victron isolation transformers, with four Victron Orion DC to DC chargers, two Victron Phoenix Smart Chargers, a Victron Quattro charger/inverter, and two Victron Lynx distributor systems orchestrating clean, reliable current. Garmin AIS and sounder modules integrate seamlessly with onboard electronics, while an Arid Bilge System helps keep spaces dry and an Empires distribution box centralizes circuits. Water quality is elevated by a SpotZero reverse osmosis dock water treatment system, hot water by a 40 litre

water heater, and motion by a SeaKeeper 6 gyro (136 run hours; 87 sea hours) that steadies the ride. Safety is underscored by outlets positioned for service and an automatic fire suppression system for peace of mind.

## Disclaimer

---

The details of this yacht are offered in good faith, but the accuracy of the information and the condition of the vessel are not guaranteed or warranted. This vessel is offered subject to prior sale, price change, or withdrawal without notice. It is presented as a convenience to clients and is not intended to constitute direct representation of a specific yacht for sale.

# CONTACTS

---

Shestakov Yacht Sales is a brokerage company specializing in the sale and service of yachts worldwide. The company offers services for buying and selling both new and used motor yachts, sailing vessels, and luxury superyachts. They also provide yacht registration, insurance, technical maintenance, crew selection, and charter organization services across the U.S., Canada, Latin America, the Caribbean, and the Bahamas.

The founder and lead broker of the company is Andrey Shestakov, a licensed and certified expert with extensive experience in marine engineering and shipbuilding.

The company has an extensive network of partnerships with major yacht manufacturers worldwide and provides services in multiple languages, including Russian, Ukrainian, Spanish, and English. The office is in Dania Beach, Florida, USA.

For more information and to view available yachts, you can visit the company's official website: <https://shestakovyachtsales.com>

## Contact details

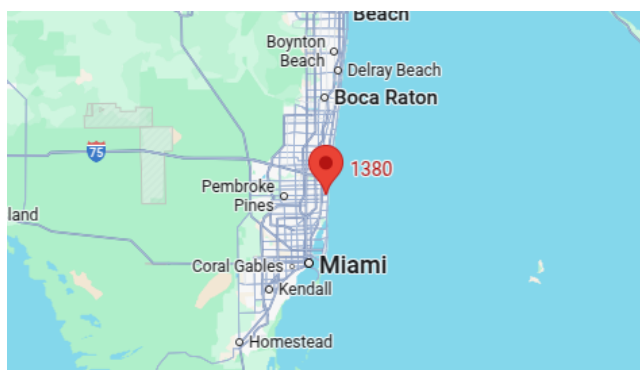
---

**Phone:** +1(954)274-4435

**Email:** [andrey@shestakovyachtsales.com](mailto:andrey@shestakovyachtsales.com)

## Address

---



1380 Weeping Willow Way, Hollywood,  
Florida 33019