

2000 CABO 45 EXPRESS - CABO YACHTS



Builder: [Cabo Yachts](#)

LOA: 45' 0" (13.72 m)

Year Built: 2000

Beam: 15' 0" (4.72 m)

Model: 45 Express

Max Draft: 14' 6" (4.42 m)

Price: \$265,000 USD Subject to change.

Cruising Speed: 27 Knots (31.07 MPH)

[See full listing on our website](#)

Location: Miami, United States

Max Speed: 32 Knots (36.83 MPH)

TABLE OF CONTENTS

OVERVIEW 3

SPECIFICATIONS 4

 Basic Information 4

 Dimensions 4

 Speed, Capacities and Weight 4

 Accommodations 5

 Hull and Deck Information 5

 Engine Information 5

GALLERY 6

DETAILED DESCRIPTION 14

CONTACTS 17

OVERVIEW

\$35k price reduction—seller invites offers before year-end. Step aboard the iconic 2000 Cabo 45 Express, a tournament-ready offshore fishing yacht that marries bluewater power with refined living spaces, and you will find a true sportfisherman built to run hard. Precision handling arrives through new three-station Glendenning electronic throttles (a \$25k upgrade), paired with fully serviced MAN 800s housed in a clean, well-kept engine room. Comfort is assured by fresh Dometic air conditioning serving both salon and cockpit, while an upgraded Onan 9 kW generator, installed new in 2014 and thoroughly overhauled in 2022 with a new heat exchanger, hoses, and starter, supplies reliable power to every amenity. Recent care includes a 2024 bottom job, new cockpit upholstery, and a crystal-clear isinglass enclosure that restore her gleam, and a Fusion stereo with JL Audio (2022) fills the deck and cabin with rich sound. Newly installed Garmin electronics with Garmin radar (not shown) sharpen your offshore situational awareness, completing a polished, capable express cruiser and saltwater sportfishing machine. Offers are encouraged, and the owner will consider a trade down for a Cabo 35 Express or a premium 28–35' center console.

SPECIFICATIONS

Basic Information

Category:
Motor yachts

Year Built:
2000

Sub category:
Sport Fisherman

Country:
United States

Model Year:
2000

Dimensions

LOA:
45' 0" (13.72 m)

Max Draft:
14' 6" (4.42 m)

Beam:
15' 0" (4.72 m)

Speed, Capacities and Weight

Cruise Speed:
27 Knots (31.07 MPH)

Water Capacity:
100 Gallons

Max Speed:
32 Knots (36.83 MPH)

Fuel Capacity:
800 Gallons

Accommodations

Total Heads:

1

Hull and Deck Information

Hull Material:

Fiberglass and Plastic Yachts

Hull Designer:

N/A

Deck Material:

Fiberglass

Interior Designer:

N/A

Hull Configuration:

Deep Vee

Engine Information

Engines:

2

Engine Type:

Inboard

Manufacturer:

MAN

Fuel Type:

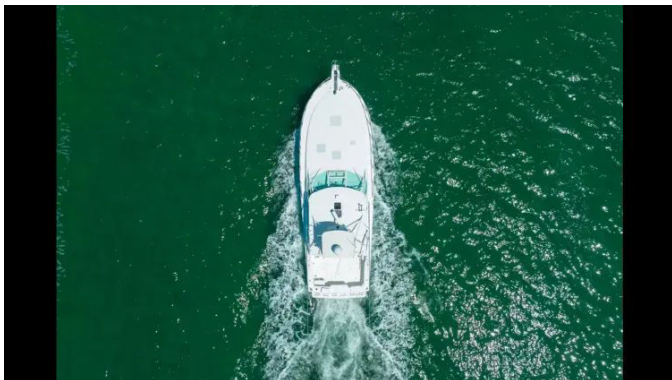
Diesel

GALLERY

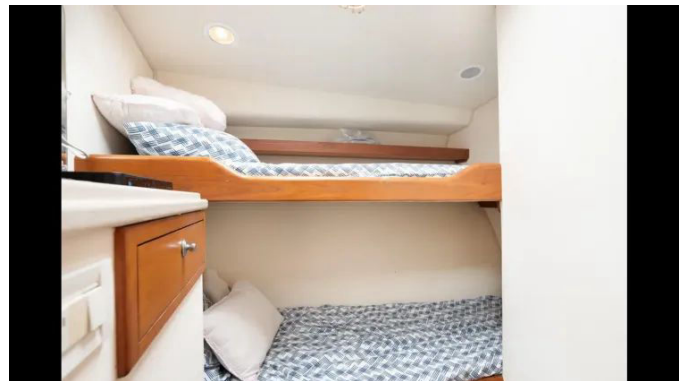
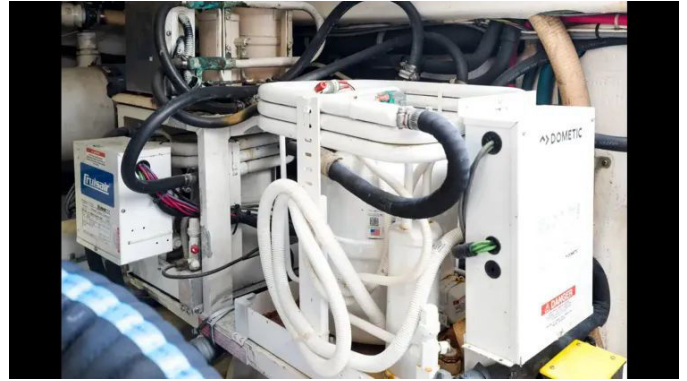


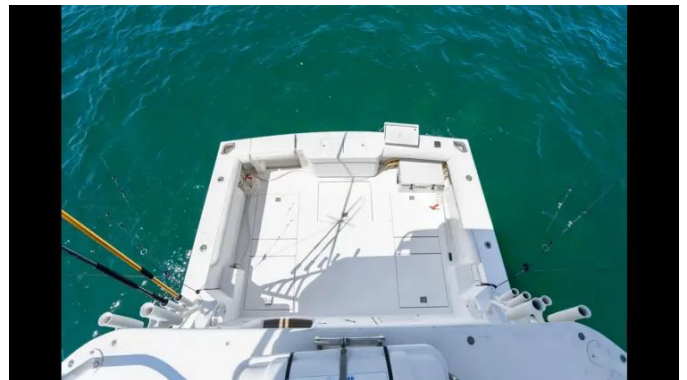


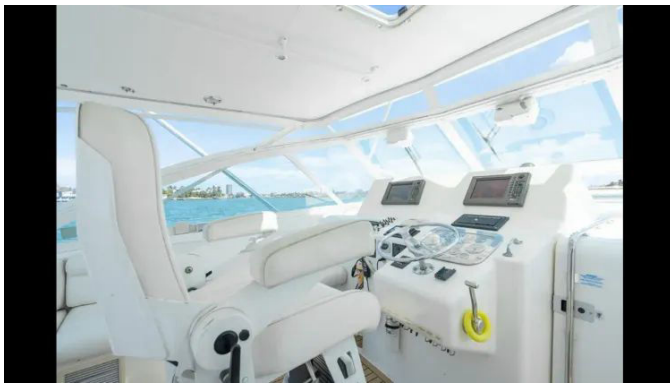












DETAILED DESCRIPTION

Description

A thirty-five thousand dollar price adjustment sets the stage for serious interest, and the seller is actively seeking offers before the end of the year. Ready to fish hard, the legendary 2000 Cabo 45 Express arrives with a suite of thoughtful upgrades that amplify both capability and comfort. A new Glendenning throttle control system with three stations represents a twenty-five thousand dollar enhancement to precise handling, while all services are current on the MAN 800s and the engine room presents clean and orderly. Climate control has been refreshed with new Dometic air conditioning for both salon and cockpit, complemented by an upgraded Onan nine kW generator installed new in 2014 and overhauled in 2022 with a new heat exchanger, new hoses, and a new starter. A complete bottom job in 2024 underscores diligent care, as do new cockpit upholstery and a new isinglass enclosure. Entertainment and navigation have been elevated with a Fusion stereo system and JL Audio installed in 2022, plus new Garmin electronics and a Garmin radar not shown in the photos. Offers are strongly encouraged, and the owner will also consider a trade down for a Cabo 35 Express or quality twenty-eight to thirty-five foot center consoles.

Other details

Purpose-built for offshore action, the cockpit features a bait prep station with a stainless-steel sink, large port and starboard fishboxes with macerators, and an aft centerline livewell, while a dive door provides direct access to the swim platform for effortless landings and watersports. A dedicated aft docking station adds precision close-quarters control and includes an additional Furuno unit, and the cockpit is lined with abundant rod holders and a

freshwater hot and cold washdown to keep the deck and gear pristine. Within the lower helm and cockpit zone, all-new JL Audio brings crisp, powerful sound, the full enclosure teams with cockpit air conditioning for year-round comfort, and there is additional tackle storage to keep lures and gear organized alongside a Raritan icemaker, an Eskimo Ice fishbox ice system by Dometic, and durable PlasTeak flooring underfoot. Electronics are comprehensive and intuitive, including Furuno GPS with units at the lower helm, aft, and on the tower, a Furuno radar, and a Simrad AP28 autopilot that steadies your heading through changing conditions. Accommodations are equally well considered: the master stateroom lies all the way forward with a centerline queen-size berth, storage beneath, direct access to a full head with shower, and hanging lockers to port and starboard; the guest stateroom offers over-under bunks and abundant storage for personal gear. The salon and galley are welcoming and efficient, with an L-shaped lounge opposite a well-appointed galley that includes a refrigerator/freezer, an electric two-burner stove, a sink, a microwave, extensive cabinetry, and a new air handler installed in 2023 for quiet, consistent climate control. The Company offers the details of this vessel in good faith but cannot guarantee or warrant the accuracy or the condition of the vessel. Buyers should instruct their agents or surveyors to investigate and verify any details as desired. This vessel is offered subject to prior sale, price change, or withdrawal without notice.

Propulsion

Power comes from a matched pair of 2000 MAN V8 diesel inboards, each rated at 800 hp, turning direct-drive shafts for reliable thrust and confident handling. Both engines show approximately 2700 hours, underscoring consistent use and maintenance, and together they deliver the punch and endurance expected of a serious express sportfisher.

Specifications

This Cabo 45 Express runs with a cruising speed of 27 kn and reaches a top speed of 32 kn. She measures 48 ft length overall with a 4.5 ft max draft and a 15.67 ft beam, and carries a dry weight of 33,000 lb. The hull is fiberglass with a deep-vee form for a soft, confident ride offshore. Tankage includes 100 gal of fresh water and 800 gal of fuel. Accommodations provide two guest cabins and one guest head.

CONTACTS

Shestakov Yacht Sales is a brokerage company specializing in the sale and service of yachts worldwide. The company offers services for buying and selling both new and used motor yachts, sailing vessels, and luxury superyachts. They also provide yacht registration, insurance, technical maintenance, crew selection, and charter organization services across the U.S., Canada, Latin America, the Caribbean, and the Bahamas.

The founder and lead broker of the company is Andrey Shestakov, a licensed and certified expert with extensive experience in marine engineering and shipbuilding.

The company has an extensive network of partnerships with major yacht manufacturers worldwide and provides services in multiple languages, including Russian, Ukrainian, Spanish, and English. The office is in Dania Beach, Florida, USA.

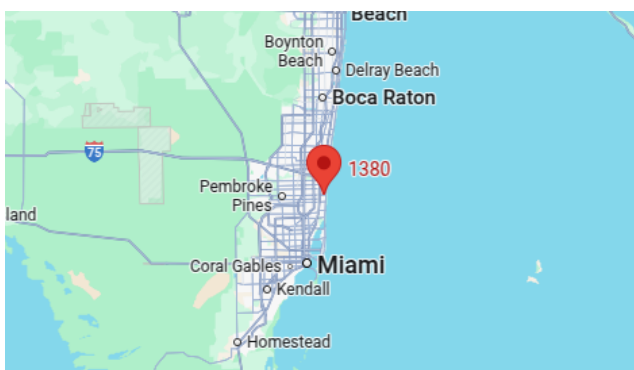
For more information and to view available yachts, you can visit the company's official website: <https://shestakovyachtsales.com>

Contact details

Phone: +1(954)274-4435

Email: andrey@shestakovyachtsales.com

Address



1380 Weeping Willow Way, Hollywood,
Florida 33019