

STRANGE MAGIC II - TIARA



Builder: [Tiara](#)

LOA: 45' 0" (13.87 m)

Year Built: 2018

Beam: 14' 0" (4.52 m)

Model: C44 Coupe

Min Draft: 12' 0" (3.67 m)

Price: \$779,000 USD Subject to change.

Max Draft: 13' 1" (4 m)

[See full listing on our website](#)

Location: Saint Clair Shores, United States

Cruising Speed: 27 Knots (31.07 MPH)

Max Speed: 31 Knots (35.67 MPH)

TABLE OF CONTENTS

| | |
|------------------------------------|-----------|
| OVERVIEW | 3 |
| SPECIFICATIONS | 4 |
| Basic Information | 4 |
| Dimensions | 4 |
| Speed, Capacities and Weight | 5 |
| Accommodations | 5 |
| Hull and Deck Information | 5 |
| Engine Information | 6 |
| GALLERY | 7 |
| DETAILED DESCRIPTION | 14 |
| CONTACTS | 17 |

OVERVIEW

Step aboard a low hours, Seakeeper stabilized luxury motor yacht in pristine freshwater condition on the Great Lakes. Strange Magic II is a 2018 Tiara 44 Coupe, driven by twin Volvo D6-435D-F inboard diesels, a vessel that combines Tiara Yachts' celebrated structural integrity, surefooted seakeeping, and intelligently conceived living spaces into an express cruiser/sport coupe crafted for effortless, upscale passage.

The salon is bathed in light from sweeping windows and a power sunroof, creating an airy, inviting interior where refined finishes speak to Tiara's attention to detail. An aft galley flows directly to the cockpit through a sliding glass door, enabling seamless indoor-outdoor entertaining and convivial cruising. Below, two stately staterooms and a single head with a separate shower comprise a practical, comfortable arrangement for weekend escapes or longer voyages; the forward owner's suite features an island berth with abundant storage while the guest cabin's twin berths convert to a generous double.

Meticulously maintained and thoughtfully outfitted, Strange Magic II includes modern navigation electronics, a generator, air conditioning, and the premium Tiara appointments throughout—an elegant, well equipped yacht poised and ready for its next adventure.

SPECIFICATIONS

Basic Information

Category:
Motor yachts

Year Built:
2018

Sub category:
Cruisers

Country:
United States

Model Year:
2018

Dimensions

LOA:
45' 0" (13.87 m)

Beam:
14' 0" (4.52 m)

Min Draft:
12' 0" (3.67 m)

Max Draft:
13' 1" (4 m)

Speed, Capacities and Weight

Cruise Speed:

27 Knots (31.07 MPH)

Water Capacity:

120 Gallons

Max Speed:

31 Knots (35.67 MPH)

Fuel Capacity:

585 Gallons

Gross Tonnage:

28000 Pounds

Accommodations

Sleeps:

6

Total Heads:

2

Hull and Deck Information

Hull Material:

Fiberglass and Plastic Yachts

Hull Designer:

Tiara Yachts

Deck Material:

Fiberglass

Interior Designer:

Tiara Yachts

Hull Configuration:

Planing

Engine Information

Engines:

2

Fuel Type:

Diesel

Manufacturer:

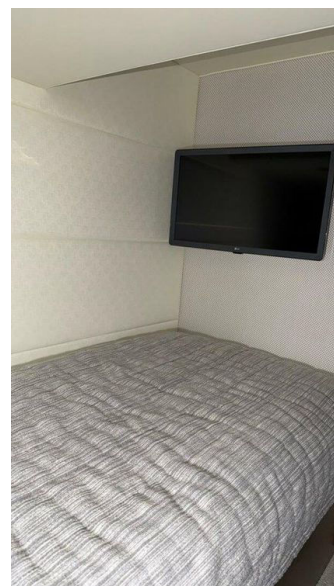
Volvo

GALLERY

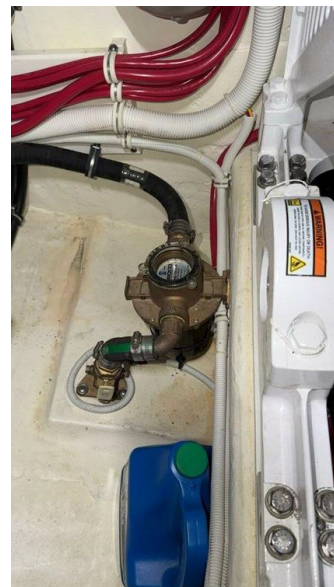














DETAILED DESCRIPTION

Accommodations

Inviting from the moment you step aboard, the interior is wrapped in warm teak cabinetry and trim, complemented by a light padded vinyl headliner and a classic teak cabin sole, creating an atmosphere of timeless elegance and comfort; the forward master stateroom features a queen berth crafted for restful nights, while the mid-cabin offers twin berths that convert to suit the moment, and a single, spacious head delivers true yacht comfort with a VacuFlush toilet, a separate shower, a sink, and a well-appointed vanity, and a bright, open salon with large windows and comfortable seating flows aft to the galley where solid-surface countertops frame a stainless sink, a refrigerator, a freezer, a cooktop, and a microwave for effortless entertaining; thoughtful design abounds with abundant storage in finely fitted cabinetry, drawers, and lockers, four-zone Dometic reverse-cycle air conditioning and heating and 12 V LED lighting throughout, while entertainment is equally refined with three Samsung flat-screen TVs serving the salon, master, and guest spaces and a Fusion MS-NRX300 stereo system energizing the ambiance through multiple speakers.

Galley

Purpose-built for gourmet ease, the aft galley centers around a square stainless steel sink set into a refined Corian countertop, supported by a two-drawer Isotherm refrigerator that keeps provisions organized and within reach, and a Kenyon dual burner flattop and a Samsung microwave make short work of everything from morning coffee to evening service, ensuring the space functions as beautifully as it looks.

Electrical

Confidence at sea starts with power delivered cleanly and reliably: 120/240 V AC shore power is handled by a Glendinning Cablemaster, while the 12 V DC electrical system keeps onboard essentials humming; a capable battery charger and inverter pair with a Cummins Onan generator panel for seamless energy management, and thoughtful lighting throughout the cabin and engine spaces ensures clarity and safety wherever you step.

Electronics and navigation

A cohesive Garmin suite streamlines command: a Garmin GHS10 keeps communications crisp, the Garmin GMR624 open array unit paints targets with precision, and twin Garmin GPSMAP 7612 displays deliver intuitive, redundant control; the Garmin AP Reactor holds a steady course, while the Garmin GSD 24 sounder module feeds rich underwater detail directly to the multifunction displays, uniting data and decision-making at the helm.

Power and mechanical

Built for quiet confidence and practical strength, the systems include a Cummins diesel generator rated at 9 kW, a 50 A shore power inlet for effortless dockside connectivity, and robust transmissions specified as Volvo IPS-F UTV Drives for efficient, responsive propulsion, together providing the smooth, dependable backbone that elevates every mile under way.

Deck equipment and features

Strength and sophistication meet on deck with a chromed plow-type anchor on the pulpit and a bow roller assembly working in concert with a Lewmar

windlass, complemented by a dedicated Lewmar RMU 50 windlass with both helm and deck controls; the molded fiberglass hull and deck are crowned by a factory hardtop and joined with an overlapping hull-to-deck bond secured by stainless steel fasteners, while a polished chrome rub rail with a white PVC insert guards the sheer and stainless steel bow rails and handrails with secure stanchions and secure grab rails throughout the cockpit and superstructure ensure safety and access; a sliding two-panel glass salon entry door opens the social space, where a four-section glass windshield at the helm remains clear and watertight, and seating abounds with port and starboard lounges plus a transom bench, a double helm seat to starboard and salon lounge seating to port; on the foredeck, a 20" circular tinted hatch with latch teams with opening hatches and screened portlights for natural ventilation, and an anchor locker with a 10" cleat at the windlass keeps ground tackle tidy; comfort elevates with a white canvas aft deck enclosure with polycarbonate windows like new and a retractable white sunshade, while utility shines with fresh and seawater washdowns in the cockpit and chain locker, a Shurflo Blaster seawater pump with an accumulator tank, and a hot/cold freshwater shower wand on the aft deck, completing the package are three white inflatable fenders, dock lines, and four rod holders neatly integrated into the aft coaming.

CONTACTS

Shestakov Yacht Sales is a brokerage company specializing in the sale and service of yachts worldwide. The company offers services for buying and selling both new and used motor yachts, sailing vessels, and luxury superyachts. They also provide yacht registration, insurance, technical maintenance, crew selection, and charter organization services across the U.S., Canada, Latin America, the Caribbean, and the Bahamas.

The founder and lead broker of the company is Andrey Shestakov, a licensed and certified expert with extensive experience in marine engineering and shipbuilding.

The company has an extensive network of partnerships with major yacht manufacturers worldwide and provides services in multiple languages, including Russian, Ukrainian, Spanish, and English. The office is in Dania Beach, Florida, USA.

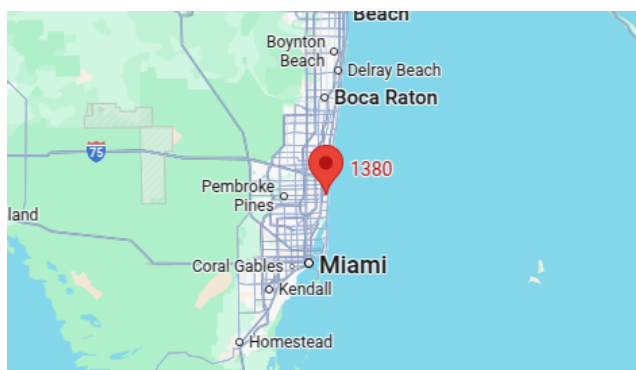
For more information and to view available yachts, you can visit the company's official website: <https://shestakovyachtsales.com>

Contact details

Phone: +1(954)274-4435

Email: andrey@shestakovyachtsales.com

Address



1380 Weeping Willow Way, Hollywood,
Florida 33019