



SHESTAKOV

Yacht Sales

## GRAND JOUR - undefined



**Year Built:** 1989

**Beam:** 14' 0" (4.50 m)

**Model:** 46 Classic

**Max Draft:** 14' 6" (4.42 m)

**Price:** \$115,000 USD Subject to change.

**Cruising Speed:** 10 Knots (11.51 MPH)

[See full listing on our website](#)

**Location:** City of Chesapeake, United States

**Max Speed:** 18 Knots (20.71 MPH)

**LOA:** 46' 0" (14.02 m)

If you would like to buy a yacht **GRAND JOUR** - or would like help answering any questions concerning purchasing, selling, or chartering a yacht, please call **+1(954)274-4435** or click here on <https://shestakovyachtsales.com>

---

# TABLE OF CONTENTS

---

<b>OVERVIEW .....</b>	<b>3</b>
<b>SPECIFICATIONS .....</b>	<b>4</b>
Basic Information .....	4
Dimensions .....	4
Speed, Capacities and Weight .....	4
Accommodations .....	4
Hull and Deck Information .....	5
Engine Information .....	5
<b>GALLERY .....</b>	<b>6</b>
<b>DETAILED DESCRIPTION .....</b>	<b>12</b>
<b>CONTACTS .....</b>	<b>20</b>

## OVERVIEW

---

GRAND JOUR is a prized 1990 Grand Banks 46 Classic trawler that pairs timeless Ray Hunt hull lines with the distinguished craftsmanship Grand Banks is known for, presenting a refined platform for extended cruising. She has been upgraded with aluminum fuel tanks and her propulsion has just undergone comprehensive overhauls, ensuring renewed dependability and extended range. Exceptionally suited to owners who value both comfort and capability, GRAND JOUR represents a compelling opportunity to acquire a classic motor yacht offering luxurious accommodations and seaworthy performance at an attractive value.

---

# SPECIFICATIONS

---

## Basic Information

---

**Model Year:**  
1990

**Country:**  
United States

**Year Built:**  
1989

## Dimensions

---

**LOA:**  
46' 0" (14.02 m)

**Max Draft:**  
14' 6" (4.42 m)

**Beam:**  
14' 0" (4.50 m)

## Speed, Capacities and Weight

---

**Cruise Speed:**  
10 Knots (11.51 MPH)

**Water Capacity:**  
300 Gallons

**Max Speed:**  
18 Knots (20.71 MPH)

**Fuel Capacity:**  
600 Gallons

## Accommodations

---

**Total Heads:**  
2

## Hull and Deck Information

---

**Hull Material:**

Fiberglass and Plastic Yachts

**Hull Designer:**

N/A

**Deck Material:**

Fiberglass

**Interior Designer:**

N/A

**Hull Configuration:**

N/A

## Engine Information

---

**Engines:**

2

**Engine Type:**

Inboard

**Manufacturer:**

CAT

**Fuel Type:**

Diesel

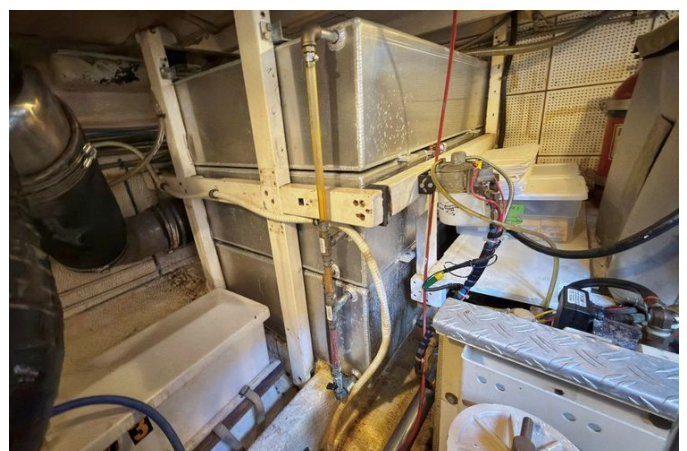
# GALLERY













---

# DETAILED DESCRIPTION

---

## Overview

---

Guests step aboard from either the side decks or the aft deck and are immediately met with wide, walkaround teak decks bordered by classic teak railings, stainless-steel stanchions and teak-capped toe rails that provide secure, elegant passage throughout the yacht. Her unmistakable trawler silhouette remains timeless, drawing admiring glances in every harbor she visits.

Inside, rich teak joinery and abundant natural light create the warm, inviting ambiance synonymous with Grand Banks. The salon is appointed with generous seating, a wet bar and an entertainment center, with flexible dining arrangements and large opening windows that deliver superb ventilation and panoramic outlooks. Forward, the lower helm affords outstanding sightlines, a convenient helm-side access door and casual seating that keeps guests engaged while underway. Aft, the full-beam owner's stateroom offers a walkaround queen berth, plentiful storage, a dedicated workspace and private ensuite facilities featuring separate head and stall shower compartments; numerous opening windows fill the suite with daylight and fresh air, offering a tranquil retreat after a day on the water. Forward accommodations provide comfortable guest quarters with a second head and separate shower, making GRAND JOUR equally well suited to cruising couples, family adventures or extended stays aboard.

The galley is strategically arranged for life under way, with ample storage, dual refrigeration, an in-counter freezer, generous countertop space and easy access to both the salon and guest accommodations. Above, an expansive flybridge delivers commanding views, abundant seating, updated electronics and a newer Bimini top—an inviting vantage for entertaining or simply

enjoying the passage. A dedicated davit and crane system on the sundeck simplifies handling of the included Highfield UL310 RIB tender powered by a 15 HP Tohatsu outboard, enabling effortless exploration of secluded anchorages and coastal destinations.

Propulsion comes from twin CAT 3208TA diesel engines that were professionally rebuilt and show under 50 hours since the rebuild, while six aluminum fuel tanks installed in 2019 provide roughly 600 gallons of fuel capacity. The well-considered two-stateroom, two-head arrangement centers on the full-beam aft owner's suite, and a folding mast reduces bridge clearance from approximately 23 feet 7 inches to 13 feet for enhanced cruising flexibility.

## Salon

---

The salon is anchored by a parquet teak sole that runs seamlessly through the space, creating a warm, sophisticated ambiance. Generous opening windows flood the interior with natural light and welcome refreshing sea breezes. A removable settee with integrated storage allows flexible seating arrangements and is complemented by a hi-lo teak table that converts effortlessly from cocktail height to a full dining surface. Entertaining is made simple with a well-appointed wet bar and a dedicated entertainment center, while a convenient breakfast bar provides a relaxed spot for morning coffee or evening hors d'oeuvres.

## Galley

---

The U-shaped galley down is appointed with a refined laminate countertop and is centered on a dual stainless-steel sink fitted with matching countertop inserts and a Glacier Bay hot/cold faucet. Culinary duties are well catered for by a Princess three-burner electric stove with oven, supported by a Sharp Carousel microwave, a practical splash guard and a dedicated exhaust fan to

keep the space fresh. Refrigeration is abundant, with two AC over-under refrigerators and an AC in-counter freezer, while a U-line icemaker serves the salon bar. Thoughtful storage solutions include an in-counter storage compartment, built-in dishware racks, spice and storage racks, dedicated glass storage, and nine drawers, complemented by one large locker, three medium lockers and two small lockers. An opening overhead hatch and two sliding windows bring natural light and ventilation into this bright, efficient and highly functional culinary area.

## **Entertainment equipment**

---

A Pioneer Mixtrax stereo serves as the auditory centerpiece on board, driving a pair of Visonik David wall-mounted speakers for full, refined sound, while an Access flat-screen TV provides immersive viewing to relax whether at anchor or underway.

## **Owner stateroom**

---

Located aft, the owner stateroom presents an island queen berth flanked by an elegant L-shaped desk to port and an expansive hanging locker, creating both comfort and functionality. The head is configured in a split layout for added convenience, while a dedicated stall shower sits to starboard for privacy and ease of use. Seven sliding windows dressed with curtains flood the cabin with natural light and fresh air, and an aft deck hatch delivers convenient access and improved ventilation. Thoughtfully appointed with generous storage throughout and a full-length vanity mirror, this bright suite serves as a refined, highly practical retreat.

---

## Guest stateroom

---

Located forward, the guest stateroom is centered around a V-berth with integrated storage and is accompanied by a hanging locker, six drawers, three shelves and one small locker to keep possessions impeccably arranged. Warm teak-plank hull-side ceilings imbue the cabin with a refined, inviting atmosphere, while two sliding windows and an opening overhead hatch usher in natural light and refreshing sea breezes. Practicality is further elevated by an anchor locker forward and, just off the space, a companionway utility closet that houses a separate washer and dryer for onboard convenience.

---

## Electronics and navigation equipment

---

The lower helm is centered on a Garmin GPSmap 5212 multifunctional display, forming the heart of an assured and refined command station, while a Garmin GMR 24HD radar extends crisp, reliable situational awareness around the yacht. Clear voice communications are handled by an Icom IC-M605 marine VHF radio, and beneath the hull an International Offshore depth finder supplies accurate depth information. A Datamarine Navigator presents log, time, distance and speed at a glance to aid passage planning, and after-dark navigation is supported by an ACR spotlight equipped with a directional pad. Timeless analog instruments—Weems & Plath brass clock and barometer—sit alongside a Danforth floating compass, and convenient access to the exterior is provided by the helm side door.

---

## Flybridge

---

Perched for panoramic sightlines and effortless command, the flybridge is appointed with a Garmin GPSmap 5212 multifunctional display at the helm and a Robertson AP200DL autopilot for precise course-keeping.

Communications and safety are handled by an iCom Command Mic II HM-157B paired with an iCom IC-M422 marine VHF radio and amplified by a Ray 43D loudhailer, while an ACR spotlight with directional pad provides focused illumination for night navigation. Entertainment is delivered by a Dual MXDM66 stereo feeding two Pyle outdoor speakers, setting an inviting soundtrack whether cruising or at anchor. Seating is arranged for both duty and leisure, featuring a distinguished Todd captain's chair, a separate mate's bench with reverse side seating, and an L-shaped settee with integrated storage. A teak high-lo table forms the social centerpiece, and a traditional ship's bell adds a timeless nautical accent.

## Deck equipment

---

The anchoring arrangement pairs a Fortress FX-37 with a 45 pound CQR, backed by 200 feet of galvanized chain rode and line, all managed by a Lofrans electric windlass with both foot and helm controls. A fiberglass pulpit trimmed in teak and bordered by stainless steel rails leads onto elegant teak decks fitted with matching teak rails and robust stainless steel stanchions. Boarding is straightforward via port and starboard gates and a transom gate, while a teak swim platform—currently damaged—extends aft from the open aft deck. Ample storage is provided by a generous lazarette, and a hot-and-cold exterior shower is located aft; the owner's stateroom also features a sliding hatch with a door for private access to the deck. Freshwater washdown outlets are positioned forward, aft and in the engine space, supplemented by an additional raw water washdown forward. Clear sightlines are ensured by a three-panel windshield with wipers, a folding mast facilitates bridge clearance, and a Magma rail-mounted grill enhances on-deck dining when at anchor.

## Mechanical equipment

---

At the heart of the vessel sit twin Caterpillar 3208TA direct-drive diesel engines, each rated at 375 hp; both units were recently rebuilt and registered fewer than 50 operating hours as of June 1, 2026. Propulsive force is delivered through Twin Disc MG 507-1 transmissions with a 2.57:1 gear ratio, new in 2025, and both engines rest on newly installed mounts for secure, vibration-minimized operation. Throttle and gear actuation are accomplished through Morse cable controls, while hydraulic steering, a Glendinning engine synchronizer and Bennett trim tabs provide refined, responsive handling. Fuel system integrity for the main engines is achieved with four Racor 900FG fuel filters fitted with a vacuum gauge, and the generator is protected by a dedicated Racor 200FG unit. Routine service and safety are made easier by an onboard oil change pump, a Fireboy automatic fire suppression system complemented by portable fire extinguishers throughout, and both forward and aft bilge pumps. Comfort underway is assured by a three-zone reverse-cycle marine air-conditioning system delivering a combined 44,000 BTU, and sanitation is reliable thanks to Vacuflush heads with a holding tank and Groco strainers. Access for inspection and maintenance is thoughtfully arranged with crawl-in access forward and removable hatches in the salon sole. Range and balance are supported by six aluminum fuel tanks fitted with sight glasses in July 2019, and the running gear is finished with bronze three-blade propellers.

## Electrical equipment

---

Configured for 120 VAC/12 VDC ship's power, the yacht's electrical architecture is anchored by a Westerbeke 8 kW generator discreetly housed in a soft soundshield and recording 4,647 hours as of June 1, 2026. Shore power is provided through a fifty-amp service with a fifty-foot cord, while onboard

battery capacity consists of six Group-24 house batteries alongside a single 8D start battery. Power conversion and charging duties are performed by a Xantrex 3,000-watt inverter/charger in concert with a Sentry G140-3NL battery charger, and system oversight is maintained via a Sentry amp monitor together with a SeaAir voltage monitor. A Vetus MeteoLiner weather station completes the suite, delivering precise atmospheric information to inform every voyage.

## Tender

---

The Highfield UL310 hardbottom inflatable enhances the yacht's repertoire with nimble sophistication, spanning an LOA of 10' 3" and a beam of 5' 8". Certified to accommodate five persons or a payload up to 882 lbs, it pairs steadfast stability with lively responsiveness, powered by a 15 hp Tohatsu outboard for seamless shore transfers and graceful harbor exploration.

## Broker comments

---

GRAND JOUR sets herself apart among vessels of her era by carrying two highly sought-after improvements: her original fuel tanks have been replaced with aluminum tanks, effectively resolving a frequent concern for Grand Banks owners, and her engines have been recently rebuilt, instilling confidence for those contemplating extended passages. After years of careful ownership and enjoyment, the seller's relocation has created an opening for a new steward to assume command of this iconic trawler. Offered at a price that reflects her present condition, GRAND JOUR provides an outstanding foundation for a buyer seeking a classic Grand Banks with significant mechanical upgrades already completed. For anyone in pursuit of a capable cruising yacht with timeless lines, a proven pedigree, and substantial upside, GRAND JOUR represents a compelling chance to own one of the most respected trawlers

ever produced; a personal inspection is encouraged to fully appreciate the boat and the value she presents.

# CONTACTS

---

Shestakov Yacht Sales is a brokerage company specializing in the sale and service of yachts worldwide. The company offers services for buying and selling both new and used motor yachts, sailing vessels, and luxury superyachts. They also provide yacht registration, insurance, technical maintenance, crew selection, and charter organization services across the U.S., Canada, Latin America, the Caribbean, and the Bahamas.

The founder and lead broker of the company is Andrey Shestakov, a licensed and certified expert with extensive experience in marine engineering and shipbuilding.

The company has an extensive network of partnerships with major yacht manufacturers worldwide and provides services in multiple languages, including Russian, Ukrainian, Spanish, and English. The office is in Dania Beach, Florida, USA.

For more information and to view available yachts, you can visit the company's official website: <https://shestakovyachtsales.com>

## Contact details

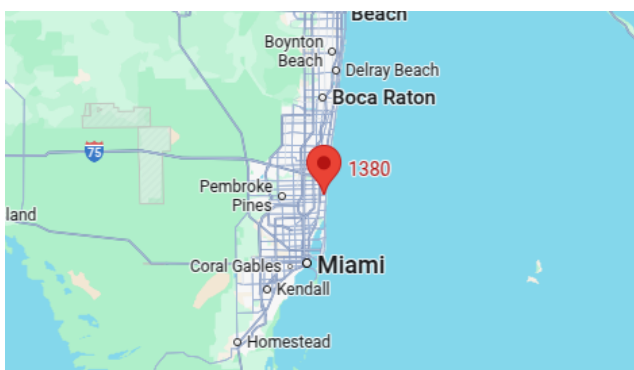
---

**Phone:** +1(954)274-4435

**Email:** [andrey@shestakovyachtsales.com](mailto:andrey@shestakovyachtsales.com)

## Address

---



1380 Weeping Willow Way, Hollywood,  
Florida 33019