

ZEUS - MARINE TRADER



Builder: [MARINE TRADER](#)

Beam: 14' 0" (4.42 m)

Year Built: 1990

Max Draft: 12' 7" (3.83 m)

Model: 47 Tradewinds

Price: \$99,000 USD Subject to change.

[See full listing on our website](#)

Location: Cape Coral, United States

LOA: 47' 0" (14.33 m)

TABLE OF CONTENTS

OVERVIEW 3

SPECIFICATIONS 4

 Basic Information 4

 Dimensions 4

 Speed, Capacities and Weight 4

 Hull and Deck Information 5

 Engine Information 5

GALLERY 6

DETAILED DESCRIPTION 15

CONTACTS 19

OVERVIEW

The 1990 Marine Trader 47 Tradewinds cockpit motor yacht is a gracefully appointed, proven platform built for the Great Loop and extended voyaging, combining the economy and range of a trawler with the generous accommodations and comportment of an aft-cabin flybridge cruiser. Propelled by twin 375 hp Caterpillar diesel engines with just under 2,045 hours and supported by an 8 kW Onan generator showing approximately 1,640 hours, she offers reliable, long-range performance and confident maneuvering aided by a Side-Power bow thruster and dual helm stations—upper flybridge and lower helm—for effortless control in tight quarters.

Her interior flows around a bright, open salon framed by large windows, with a galley-down arrangement and a convertible dinette that adds flexible dining or sleeping space. Accommodation is centered on a full-beam aft owner's suite with a private ensuite and a Splendide washer/dryer, complemented by a second stateroom and a second head to neatly serve guests. Wide side decks, easy walkarounds, and a protected sundeck extend living space outdoors, while thoughtful systems such as tri-zone air conditioning make her an elegant, comfortable liveaboard and reliable long-distance cruiser.

Practical systems, accessible service areas and well-considered ergonomics make this 47 Tradewinds a standout candidate for coastal passages, river running, seasonal migrations and the Great Loop—a versatile, well-equipped motor yacht that balances luxury, utility and dependability. Yacht category keywords: Motor Yacht, Trawler, Flybridge, Aft Cabin, Cockpit Motor Yacht, Liveaboard, Cruiser, Great Loop, Powerboat.

SPECIFICATIONS

Basic Information

Category:
Motor yachts

Year Built:
1990

Model Year:
1990

Country:
United States

Dimensions

LOA:
47' 0" (14.33 m)

Max Draft:
12' 7" (3.83 m)

Beam:
14' 0" (4.42 m)

Speed, Capacities and Weight

Water Capacity:
230 Gallons

Fuel Capacity:
450 Gallons

Hull and Deck Information

Hull Material:

Fiberglass and Plastic Yachts

Hull Designer:

N/A

Deck Material:

Fiberglass

Interior Designer:

N/A

Hull Configuration:

Monohull

Engine Information

Engines:

2

Engine Type:

Inboard

Manufacturer:

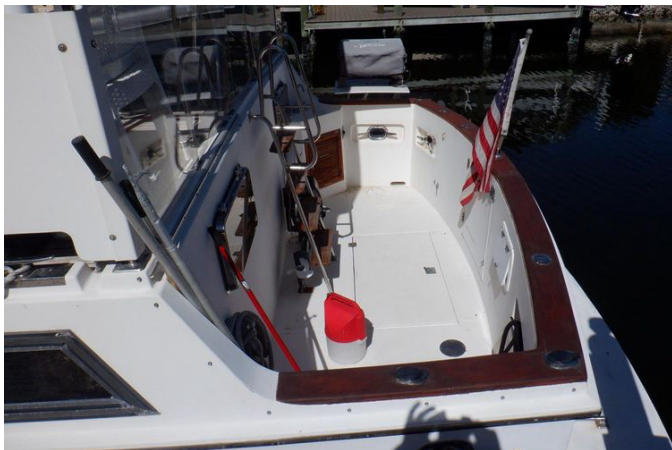
Caterpillar

Fuel Type:

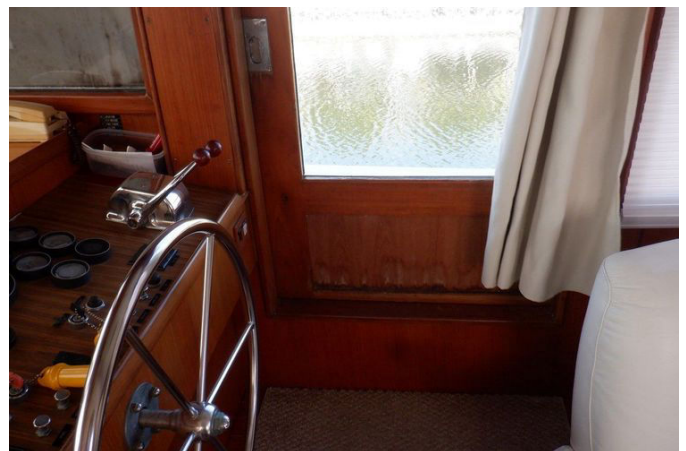
Diesel

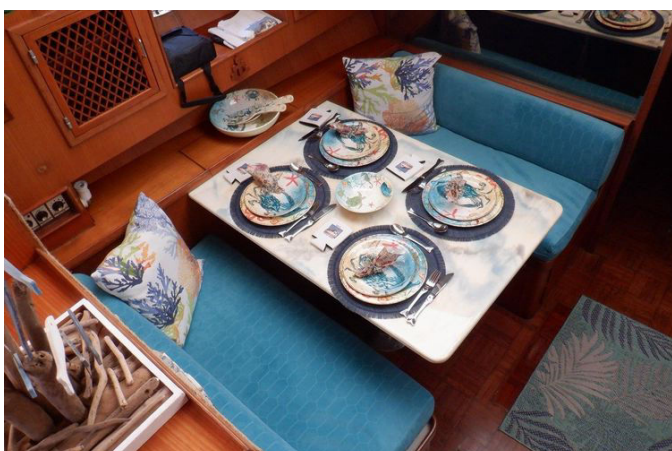
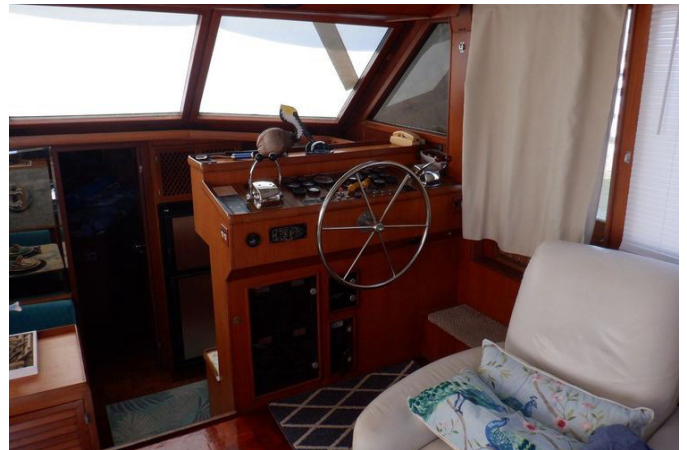
GALLERY

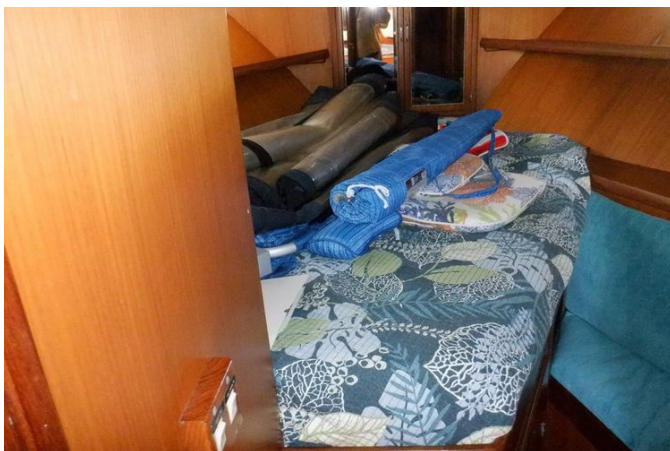


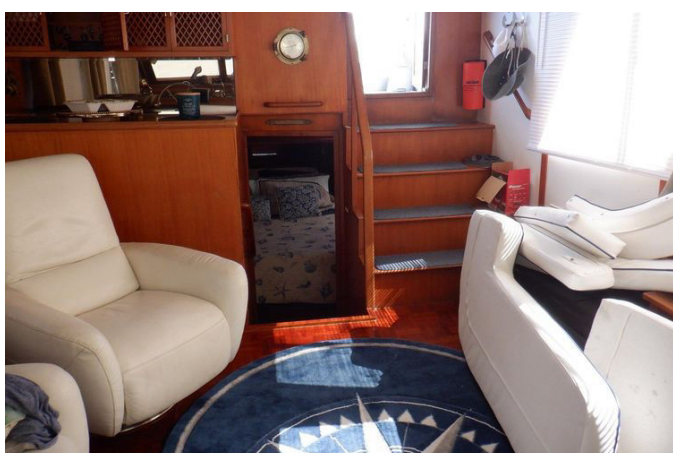
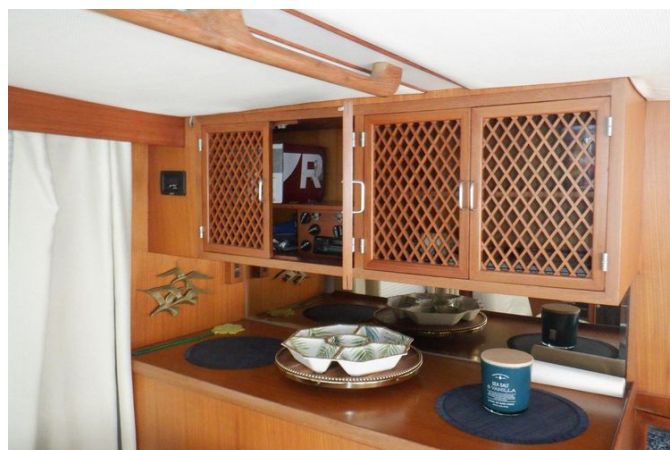




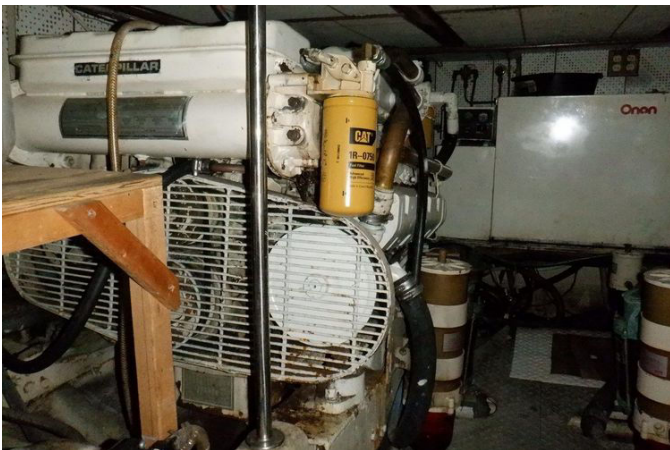












DETAILED DESCRIPTION

Accommodations

In the salon, two leather chairs face a portside entertainment center with a flat-screen TV, while access panels to the engine room remain cleverly concealed, creating a seamless and refined living space. Aft overhead storage, an air-conditioning control, and large opening windows with screens to port and starboard invite fresh airflow, complemented by overhead grab rails, bright overhead lighting, and tailored shades for the side windows that balance comfort and privacy. Down to starboard, the galley offers abundant storage, a generous sink with a designer faucet, a Norcold refrigerator/freezer operating on 12V/110V, and dedicated wine storage racks, making meal preparation effortless whether underway or at anchor. Opposite, the convertible dinette down to port transforms into a comfortable berth against a mirrored bulkhead, with port-side storage lockers and shelves and additional room beneath the seats for stowage. The forward stateroom enjoys its own air-conditioning control, a mirrored locker with access to the chain locker, overhead lighting and an opening hatch, a queen berth to port, and a starboard settee with storage below, plus drawers beneath the berth, shelves to port and starboard, and a wardrobe locker for orderly cruising. The forward head is appointed with an electric head, mirrored bulkhead, opening portlight, overhead lighting, a shower, and a vanity with sink, faucet, and storage above and below, combining practicality with style. Aft, the master stateroom is a serene retreat, appointed with two wardrobe lockers, an independent air-conditioning control, abundant storage lockers and drawers to port and starboard, a centerline queen berth, a mirrored aft bulkhead, nightstands to port and starboard, opening and screened windows with shades, overhead lighting, and the convenience of a Splendide 2100XC washer/dryer. The master

ensuite head completes the accommodation with an electric head, enclosed stall shower, mirrored bulkhead, opening portlight, overhead lighting, and a vanity with sink, faucet, and storage above and below, delivering comfort and thoughtful functionality throughout.

Electronics and helm details

On the flybridge, a Raymarine touchscreen GPS/chart/radar is paired with a Raymarine open array radar to provide clear navigation and situational awareness, while Side Power bow thruster joystick control and Morse dual shift and throttle controls put precise handling at your fingertips for confident maneuvering. Benett trim tab controls fine-tune the ride, a flush-mounted lighted compass and full engine instrumentation keep vital data immediately visible, and spotlight control enhances safety during low-light operations. A stainless steel captain's wheel and a Standard Horizon Explorer marine VHF radio complete the command ensemble with durability and reliable communication. At the lower helm, Benett trim tab controls, a flush-mounted lighted compass, full engine instrumentation, Morse dual shift and throttle controls, and a stainless steel captain's wheel mirror the flybridge layout to ensure consistent ergonomics, while a practical starboard helm door fitted with a shade curtain adds convenience and shelter when needed.

Electrical

An Onan 8 kW generator shows 1,640 hours, offering dependable auxiliary power for systems and comforts while cruising or at anchor.

Deck

Forward, two stainless steel line chocks, an electric windlass with a Bruce

anchor, a stainless steel sampson post, and a teak bow pulpit are framed by a robust stainless steel bow rail and a rub rail with a stainless steel insert, presenting a purposeful and elegant foredeck. A stainless steel fender rack carries six fenders, and a Textilene windshield cover stands ready when at rest to protect and preserve. On the flybridge, a bimini top shades L shaped seating to port and starboard with generous storage below, while the sundeck aft invites relaxation with two aft stainless steel cleats, two deck chairs around a folding teak table, all sheltered beneath a hardtop with overhead lighting and overhead rod storage for fishing or leisure gear. Thoughtful flow continues via a companionway door to the salon and a separate door to the flybridge, with teak doors leading to port and starboard walkways and teak safety rails with a lower enclosure that ensure secure passage. The wet bar features a sink with faucet, storage above and below, and a Frigidaire wine cooler to keep refreshments at hand. Atop the sundeck, perimeter stainless steel grab rails encircle tender-handling gear that includes a tender crane and tender davits, simplifying launch and recovery. In the cockpit, two opening port lights brighten the aft stateroom, two stainless steel utility items add function, four rod holders stand ready for anglers, and four stainless hawse cleats—one to port, one to starboard, and two on the stern—manage mooring lines with confidence. A flag holder and propane grill invite leisurely evenings, while a stainless steel ladder with teak steps leads to the sundeck above. A teak cap rail frames the scene, and a wet bar with sink, faucet, and a storage locker below adds welcome convenience. At the swim platform, a fiberglass platform and a fold down stainless steel swim ladder make water access effortless and safe.

Engine and mechanical details

Engine-room service is simplified with Racor fuel filters serving both mains and generator, while sea strainers protect the mains, generator, and

air-conditioning system for reliable cooling water flow and consistent operation under a variety of conditions.

Exclusions

The dinghy and outboard are not included in the sale.

CONTACTS

Shestakov Yacht Sales is a brokerage company specializing in the sale and service of yachts worldwide. The company offers services for buying and selling both new and used motor yachts, sailing vessels, and luxury superyachts. They also provide yacht registration, insurance, technical maintenance, crew selection, and charter organization services across the U.S., Canada, Latin America, the Caribbean, and the Bahamas.

The founder and lead broker of the company is Andrey Shestakov, a licensed and certified expert with extensive experience in marine engineering and shipbuilding.

The company has an extensive network of partnerships with major yacht manufacturers worldwide and provides services in multiple languages, including Russian, Ukrainian, Spanish, and English. The office is in Dania Beach, Florida, USA.

For more information and to view available yachts, you can visit the company's official website: <https://shestakovyachtsales.com>

Contact details

Phone: +1(954)274-4435

Email: andrey@shestakovyachtsales.com

Address



1380 Weeping Willow Way, Hollywood,
Florida 33019