

LORAX - TIARA



Builder: [Tiara](#)

LOA: 48' 0" (14.73 m)

Year Built: 2024

Beam: 14' 0" (4.32 m)

Model: 48 LE

Min Draft: 7' 11" (2.42 m)

Price: \$1,799,000 USD Subject to change.

Max Draft: 12' 7" (3.83 m)

[See full listing on our website](#)

Location: Fort Lauderdale, United States

Cruising Speed: 20 Knots (23.02 MPH)

Max Speed: 30 Knots (34.52 MPH)

TABLE OF CONTENTS

OVERVIEW	3
SPECIFICATIONS	4
Basic Information	4
Dimensions	4
Speed, Capacities and Weight	5
Accommodations	5
Hull and Deck Information	5
Engine Information	6
GALLERY	7
DETAILED DESCRIPTION	23
CONTACTS	33

OVERVIEW

The 48' Tiara LE elevates every outing into an effortless passage—whether carving across glassy water at dawn or hosting an intimate evening as the sky softens. Its refined silhouette and exacting workmanship unite spirited handling with understated luxury, producing a ride that is both composed and lively. Thoughtful touches flow from the sculpted helm to the inviting cockpit, each detail conceived for those who prize both beauty and usefulness. Onboard systems reinforce that promise: a Seakeeper SK6 gyro delivers exceptional roll control for tranquil comfort, while seamless connectivity comes courtesy of Starlink and comprehensive monitoring is provided by the GOST security suite. Practical independence is assured by an integrated watermaker and icemaker, and peace of mind follows with a transferable limited warranty—5 years on hull and deck and 2 years on accessories. Currently berthed at Montauk Yacht Club, this yacht is available for inspection with a single day's notice. Explore this opportunity to own a vessel where intelligent design and quiet refinement converge.

SPECIFICATIONS

Basic Information

Category:
Motor yachts

Year Built:
2024

Sub category:
Cruisers

Country:
United States

Model Year:
2024

Dimensions

LOA:
48' 0" (14.73 m)

Beam:
14' 0" (4.32 m)

Min Draft:
7' 11" (2.42 m)

Max Draft:
12' 7" (3.83 m)

Speed, Capacities and Weight

Cruise Speed:

20 Knots (23.02 MPH)

Water Capacity:

100 Gallons

Max Speed:

30 Knots (34.52 MPH)

Fuel Capacity:

350 Gallons

Gross Tonnage:

21.37 Pounds

Accommodations

Sleeps:

4

Crew Cabin:

1

Total Heads:

2

Crew Berths:

2

Hull and Deck Information

Hull Material:

Fiberglass and Plastic Yachts

Hull Designer:

Tiara Yachts Engineering Team

Deck Material:

Fiberglass

Interior Designer:

Tiara Yachts Design Team

Hull Configuration:

Semi-Displacement

Engine Information

Engines:

3

Fuel Type:

Diesel

Manufacturer:

Mercury

GALLERY

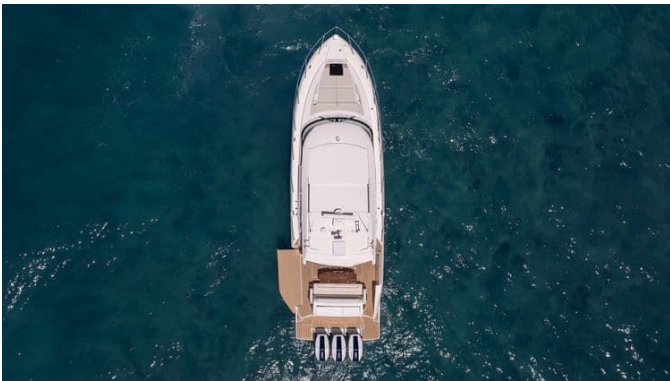








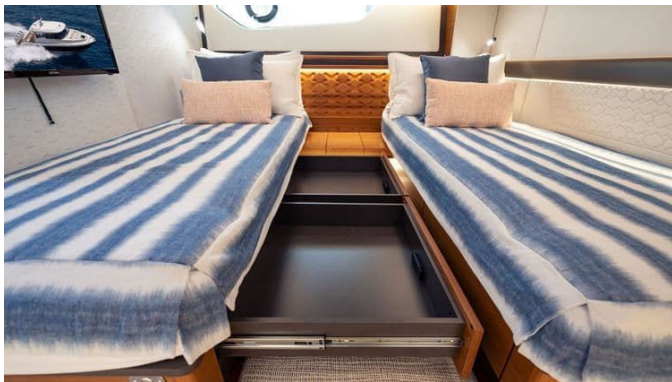
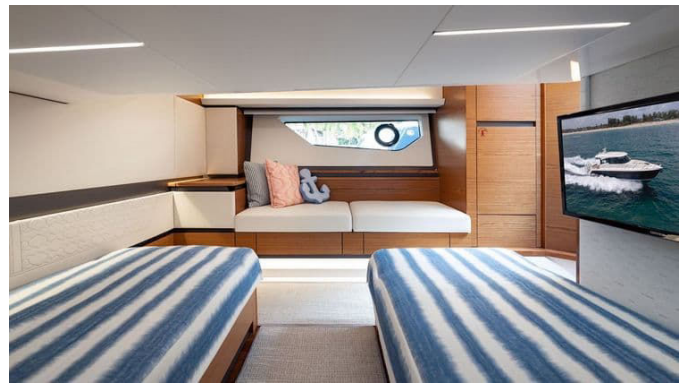




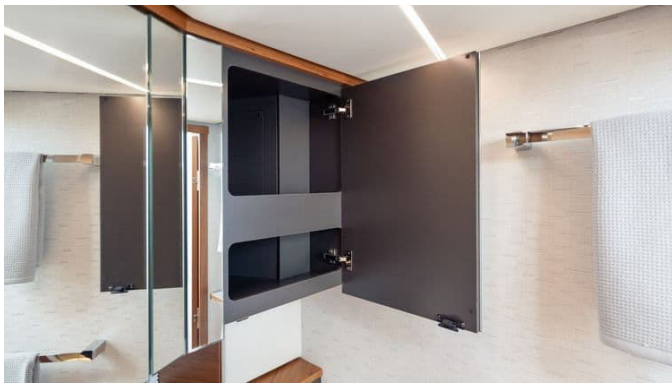


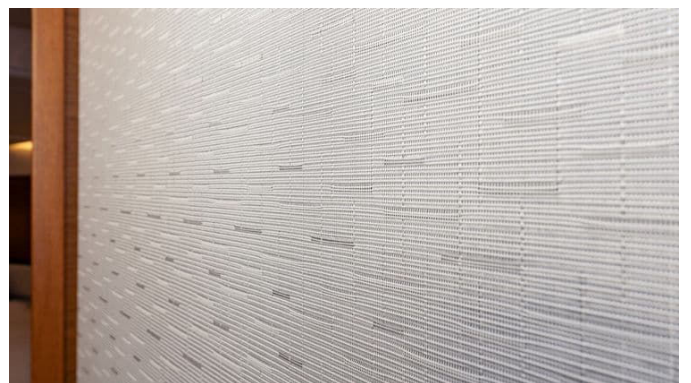
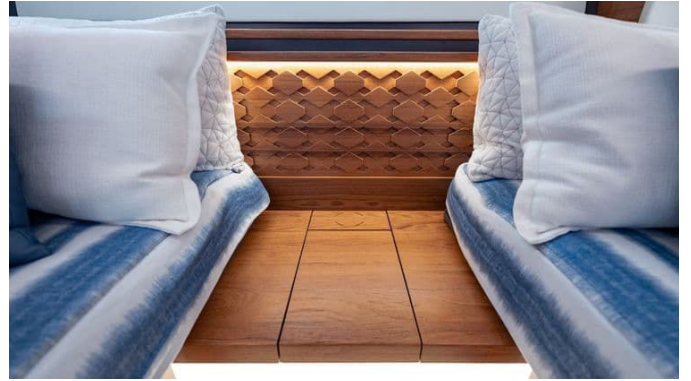
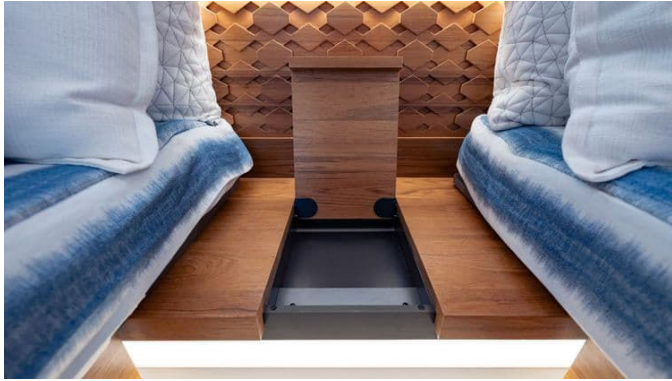


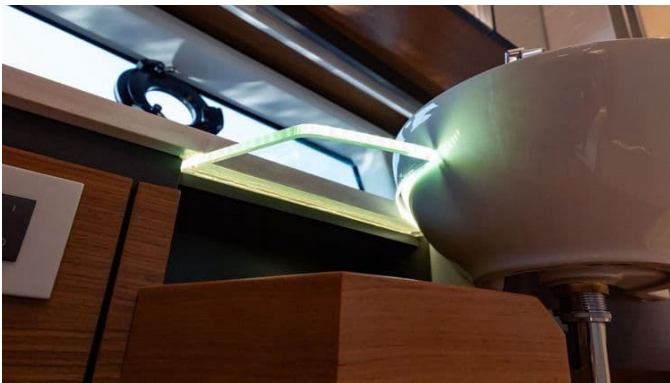


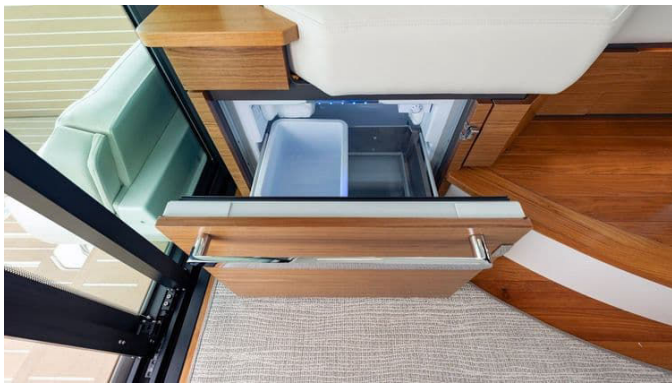














DETAILED DESCRIPTION

Upgraded options

This yacht is a masterpiece of modern engineering and luxury, offering an array of upgraded options that ensure an unparalleled experience on the water. At the heart of its reliability is Tiara Yachts' Transferrable Limited Warranty, providing peace of mind with 5 years of coverage on the hull and deck, and 2 years on accessories. Connectivity is seamless with the inclusion of Starlink, while security is enhanced by the GOST System. For those who value independence, the yacht is equipped with a watermaker, ensuring fresh water is always available. Maneuverability is a breeze thanks to the Mercury JPO with an integrated bow thruster, and stability is guaranteed by the Seakeeper SK6 Gyro. The onboard inverter ensures a steady power supply, while the head macerator system and raw water washdowns in both the aft cockpit and anchor locker add convenience. Maintenance is simplified with an oil changer for the generator, and anchoring is effortless with the all chainless windlass, complete with a remote at the helm. The ElectraSea strainer and synthetic teak decking on the aft cockpit and swim platform, featuring a natural finish with white lines, add to the yacht's aesthetic appeal. A refrigerated cooler box keeps refreshments chilled, and fishing enthusiasts will appreciate the four gunwale rod holders and rocket launchers with tow rod holders. The teak cockpit table, finished with a high gloss, and teak flooring in the staterooms exude elegance, complemented by a teak steering wheel. Entertainment options abound with an icemaker, Garmin Phantom 54 Radar with a 4' open array, and an additional Garmin 16" GPSMAP. A cockpit TV, ACR LED remote spotlight, and FLIR M232 camera enhance the onboard experience, while Sirius XM Radio and Weather Ready features keep you informed and entertained. Finally, the yacht's exterior is protected and beautified with one quart of hull paint, ensuring it remains as

stunning as the day it was launched.

Hull and deck

The hull and deck of this yacht are crafted with precision and advanced materials to ensure both durability and performance. The infused hull features a painted outer layer with a bootline accent color, and is constructed with structural foam-cored hullsides and bottom. Reinforced with carbon fiber, engineered composite fabrics, and premium resin, this design offers exceptional strength and resilience. The deck is similarly infused, boasting a gelcoat outer layer and foam-cored walking surfaces, all supported by engineered composite fabrics and premium resin. A key feature is the infused fiberglass structural grid system, which includes a molded finish and an integrated bilge water management system, enhancing both the structural integrity and functionality of the yacht. The two-ply resin-infused composite transom system further contributes to the vessel's robust construction. For underwater fittings, bronze seacocks are utilized, while above-waterline thru-hulls are equipped with stainless clad Stalon fittings, ensuring reliability and longevity. The yacht's deck and cockpit liner are molded in one piece, featuring Tiara's custom diamond pattern non-skid for safety and style. A high-density white PVC rubrail with a solid 316L stainless steel insert, molded rubrail corners, and a 316L stainless steel transom cap and quarter fenders provide additional protection and aesthetic appeal. The yacht is equipped with eight 10-inch cleats, strategically placed with two on the stern and six at the midship and bow, facilitating secure mooring. Finally, the self-draining cockpit ensures that water is efficiently managed, maintaining a dry and safe environment on board.

Hardtop

The hardtop of this yacht is a marvel of design and functionality, crafted from molded fiberglass and featuring an integrated visor for added protection and style. The custom windshield system is a standout feature, boasting a tempered curved windshield, tempered side glass, and a robust aluminum frame, ensuring both durability and clear visibility. For convenience, the yacht is equipped with two windshield wipers complete with washers, ensuring a clear view in all weather conditions. A folding navigation light mast is thoughtfully designed with integrated flag and burgee attachment points, adding to the vessel's versatility. The Webasto® electrically actuated sunroof offers an open-air experience at the touch of a button, enhancing the luxury feel of the yacht. Multicolor LED dramatic lighting is installed throughout and underwater, integrated with Shadow-Caster® technology and controlled through the Garmin display, providing a customizable ambiance. Additionally, multicolored LED lights over the helm facilitate nighttime navigation. The custom hardtop also features an integrated stainless steel Makefast® powered sunshade, offering one-touch operation for full cockpit coverage with elegant white Sun silk fabric. Completing the hardtop's impressive array of features is an electric dual trumpet horn, ensuring the yacht is both seen and heard on the water.

Fordeck

The fordeck of this yacht is designed with both functionality and luxury in mind, ensuring a seamless blend of practicality and comfort. At the heart of its anchoring system is a 5/8" 8 plait rode, equipped with an ultra flip swivel for smooth and reliable operation. The 316L stainless steel through stem anchor roller is complemented by a 10" mooring cleat, chain binder, and aluminum backing plates, providing robust and secure mooring capabilities. Adding to the

aesthetic appeal, the foredeck features synthetic teak decking accents, which not only enhance the visual allure but also offer durability and ease of maintenance. For relaxation, a recessed chaise lounge sunpad is thoughtfully integrated, complete with handholds, drink holders, and a weather cover, ensuring that comfort is never compromised. This combination of high-quality materials and thoughtful design makes the foredeck a standout feature of the yacht, offering both style and substance.

Transom

The transom of this yacht is designed to enhance both functionality and ease of access, making it a standout feature for any boating enthusiast. It boasts an integrated swim platform with extensions outboard of the engines, providing ample space for water activities and relaxation. The dual Tiara transom entry doors offer convenient access to and from the water, ensuring a seamless transition between the yacht and the sea. For added convenience, a telescopic boarding ladder is mounted in the port platform extension, allowing for easy boarding. Safety is prioritized with a 316L stainless steel grab rail, facilitating secure water ingress and egress. The transom also features a recessed shower with a pullout sprayer and a hot/cold mixing valve, offering the luxury of rinsing off after a swim. The flush swim platform is designed to provide athwartship access, enhancing the overall usability of the transom area. This thoughtful combination of features ensures that the transom is not only practical but also enhances the overall enjoyment of the yacht experience.

Aft cockpit

The aft cockpit of this yacht is a masterclass in luxury and functionality, designed to enhance your onboard experience with a host of premium features. At its heart is the power rotating lounge module, which offers

versatile seating arrangements to suit any occasion. Complementing this is a high gloss teak leafing table, complete with a weather cover, providing an elegant space for dining or relaxation. The buffet-style countertop surface, equipped with drink holders, ensures that refreshments are always within easy reach. Storage is seamlessly integrated into the design, with compartments that keep the cockpit tidy and organized. For entertainment, the area is equipped with two 6.5" JL Audio® coaxial speakers and an 8" subwoofer, delivering high-quality sound. An electric grill adds to the culinary possibilities, while the port hull side terrace, featuring synthetic teak decking and a stored telescoping swimming ladder, offers additional space for leisure. The cockpit is further enhanced by four 6.5" JL Audio® coaxial speakers and a Fusion® remote control pad, ensuring that your favorite tunes are always at your fingertips. A hull side boarding door on the starboard side provides easy access, while an access hatch to the mechanical space under the cockpit, complete with 12V lighting, ensures that maintenance is straightforward. Comfort is paramount, with aft-facing port and starboard lounge seats featuring drink holders, USB charging ports, and weather covers. Insulated cooler boxes with drains are conveniently located under the port and starboard aft-facing seat bases, as well as under the centerline step to the salon. For those who enjoy fishing, the port and starboard insulated cockpit floor storage/fish wells with macerators are a welcome addition. The aesthetic appeal is enhanced by synthetic teak decking on the gunnels, gunnel steps, and under aft cleats, while molded-in steps to deck walkways and the swim platform, complete with safety handrails, ensure easy and secure movement around the yacht. Above deck, a dockside water inlet and a fresh water washdown with a 25' hose provide added convenience, making the aft cockpit a perfect blend of style, comfort, and practicality.

Salon and helm area

The salon and helm area of this yacht are designed to offer a perfect blend of luxury, functionality, and cutting-edge technology. The helm console is crafted from molded fiberglass and features an aft tilting design with an instrumentation visor, providing a sleek and efficient space for navigation. It includes an electronics mounting surface, push button switches, a 13.5" steering wheel, and a folding stainless steel step. USB charging outlets, drink holders, and a safety lanyard add to the convenience and safety of the helm. Sliding side glass on both port and starboard sides allows for excellent ventilation and views, while the teak flooring adds a touch of elegance. The aft bulkhead is equipped with a sliding door and a powered window to starboard, complete with Duette blinds for privacy and light control. Safety is enhanced with 316L stainless steel grab rails, and the Stidd® 500W helm seat offers electrically actuated fore and aft adjustments for optimal comfort. The double wide companion seat slides forward to reveal additional portside lounge seating, providing flexibility in seating arrangements. The port side power-up panel includes a glove box storage compartment, dual USB charging outlets, and drink holders for added convenience. The Fusion® Apollo multi-zone stereo system, powered by JL Audio® digital amplification, coaxial speakers, and a subwoofer, ensures an exceptional audio experience. The galley is equipped with solid surface countertops, a stainless steel undermount sink with a hot/cold water faucet, and a recessed two-burner induction cooktop. A 120V/12V dual-drawer refrigeration unit and a freezer drawer unit located under the portside lounge offer ample storage for provisions. A microwave-convection oven, five storage drawers below the countertop, a removable waste receptacle, and a Tiara Yachts branded Yeti Tundra 45 cooler complete the galley amenities. In the salon area, the portside lounge sofa offers seating for four and features a high gloss teak, manual hi-lo table, berth conversion, and storage below. Duette blinds for the port and starboard salon

windows provide privacy and light control. A 43" TV mounted on a hi-lo actuator in the starboard galley is concealed when not in use and includes a soundbar for enhanced entertainment. Overhead LED direct and indirect lighting creates a warm and inviting atmosphere, while the Dometic 28,000 BTU air conditioning system with reverse cycle heat ensures comfort in all weather conditions.

Atrium and staterooms

The atrium and staterooms of this yacht are a testament to sophisticated design and luxurious comfort. The interior is adorned with architectural teak and Chilewich, creating a warm and inviting atmosphere. Solid teak cabin steps and flooring in the atrium add a touch of elegance, while the full fiberglass hull, cabin, and deck liner with sound dampening insulation ensure a quiet and serene environment. Climate control is expertly managed with two Dometic 10,000 BTU air conditioning systems featuring reverse cycle heat, providing comfort in both the staterooms and heads. The space is illuminated by 12V LED lighting, and 120V outlets are conveniently placed throughout. Hullside windows with blinds, opening ports, and privacy shades offer both natural light and seclusion. The forward stateroom is a haven of relaxation, featuring a queen pedestal berth with a pillowtop innerspring mattress, headboard, mattress pad, coverlet, pillow shams, accent pillows, and luxury linen sheets. Storage is ample, with a compartment below the forward berth, manually actuated with gas springs, and a hanging locker with shelves. The mid-cabin stateroom offers twin berths with innerspring mattresses, an upholstered headboard, coverlets, pillow shams, accent pillows, mattress pads, and luxury linen sheets. These berths can slide together to form an island queen berth, providing versatility in sleeping arrangements. A cedar-backed hanging locker adds a touch of refinement, while plush carpeted floors and risers enhance the comfort of both staterooms. Additional features include LED reading lights,

inductive chargers, USB ports, and LED HDTVs, ensuring that every modern convenience is at your fingertips. This combination of thoughtful design and luxurious amenities makes the atrium and staterooms a standout feature of the yacht, offering a perfect retreat on the water.

Heads

The heads on this yacht are designed with both luxury and practicality in mind, offering a seamless blend of style and functionality. The en suite head features a full frame door and provides direct entry from the forward stateroom, ensuring privacy and convenience. Additionally, there is a mid-cabin/day head with a full frame door, accessible from the atrium, catering to both guests and day use. Each head is equipped with fiberglass stall showers, complete with a sump pump, glass shower door, and a teak seat, providing a spa-like experience. The teak vanities are accented with solid surface materials and offer ample storage below, featuring a vessel sink and a single lever faucet for a modern touch. Mirrored upper cabinets add to the elegance and functionality of the space. The heads are fitted with VacuFlush® toilets, known for their efficiency and reliability. Exhaust fans and air conditioning vents ensure a comfortable environment, while opening ports provide natural ventilation. Waste receptacles are conveniently placed for easy disposal, maintaining cleanliness and order. This thoughtful design ensures that the heads are not only practical but also enhance the overall luxury experience on board.

Instrumentation, safety and equipment

The instrumentation, safety, and equipment on this yacht are meticulously designed to ensure a seamless and secure experience on the water. At the heart of the electrical system is the Tiara Custom 12V DC and 120V AC system,

complete with a Tiara Power-Up/System Monitoring Panel, providing comprehensive control and monitoring capabilities. The yacht is equipped with a 120/240V AC 50 Amp 50' dockside power cord featuring a Glendinning® Cablemaster power recoiler for easy management of shore power connections. Additionally, a cable TV inlet with a 65' dockside cord ensures entertainment options are always available. Powering the yacht is a Kohler® 11.0kW diesel generator with a sound shield, which includes a rotomolded HDPE fuel tank with an in-line vent filter and a digital level indicator for efficient fuel management. The yacht is also equipped with TV and AM/FM radio antennas, ensuring connectivity and entertainment at all times. The 12V multiple battery bank system includes four house batteries and one engine battery per engine, supported by an electrical bonding system and zinc sacrificial anodes for optimal performance and protection. The Tiara Yachts integrated electronics package features twin Garmin® 16" GPSMAP displays, a 600W transducer, a Garmin® VHF radio, and a Mercury® autopilot, providing state-of-the-art navigation and communication capabilities. A Ritchie® SuperSport SS-2000 compass and Lenco® electric trim tabs with control pad, indicator lights, and auto-retract functionality further enhance the yacht's handling and performance. Safety is paramount, with three automatic/manual electric bilge pumps with indicators at the helm, strategically placed forward, midship, and aft. The yacht features an aluminum gasoline fuel tank with in-line vent filters, fuel shut-off valves, and a digital level indicator, as well as a fresh water system with a tank, 5 GPM pump, 11-gallon water heater, and digital level indicator. A waste holding tank with deck discharge, vent filter, and digital level indicator ensures efficient waste management. Fire safety is addressed with a Fireboy clean agent fire extinguisher system for the mechanical space and four handheld fire extinguishers. A smoke alarm and carbon monoxide detector in the interior cabin provide additional safety measures. The yacht is equipped with a 5kW Lewmar® Gen 2 24V bow thruster for enhanced maneuverability, and eight Tiara Yachts life vests are included for

domestic boats. Dedicated storage for dock lines and 10" fenders, along with six 5/8" x 30' black dock lines, ensures that mooring is straightforward and secure. The yacht is equipped with a USCG approved electronic flare, a USCG approved safety and medical kit, and USCG/international LED navigation lighting, all certified by NMMA using ABYC standards. International certification options are available, and engines and boat systems are shipped winterized, ensuring readiness for any adventure.

Disclaimer

The Company presents the details of this vessel in good faith, striving to provide accurate and comprehensive information. However, it cannot guarantee or warrant the accuracy of this information nor the condition of the vessel. Prospective buyers are encouraged to instruct their agents or surveyors to thoroughly investigate any details they wish to have validated. It is important to note that this vessel is offered subject to prior sale, price change, or withdrawal without notice.

CONTACTS

Shestakov Yacht Sales is a brokerage company specializing in the sale and service of yachts worldwide. The company offers services for buying and selling both new and used motor yachts, sailing vessels, and luxury superyachts. They also provide yacht registration, insurance, technical maintenance, crew selection, and charter organization services across the U.S., Canada, Latin America, the Caribbean, and the Bahamas.

The founder and lead broker of the company is Andrey Shestakov, a licensed and certified expert with extensive experience in marine engineering and shipbuilding.

The company has an extensive network of partnerships with major yacht manufacturers worldwide and provides services in multiple languages, including Russian, Ukrainian, Spanish, and English. The office is in Dania Beach, Florida, USA.

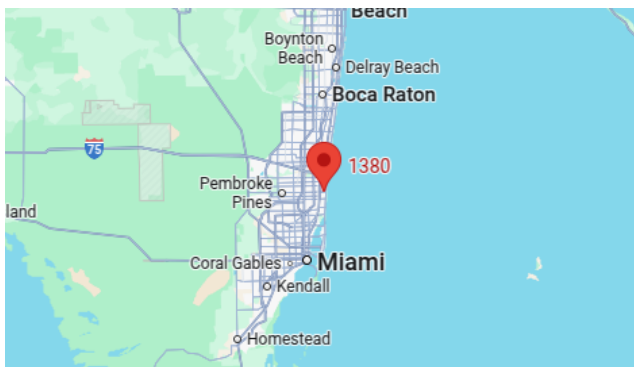
For more information and to view available yachts, you can visit the company's official website: <https://shestakovyachtsales.com>

Contact details

Phone: +1(954)274-4435

Email: andrey@shestakovyachtsales.com

Address



1380 Weeping Willow Way, Hollywood,
Florida 33019