



SHESTAKOV

Yacht Sales

## INDIGO - OFFSHORE YACHTS



**Builder:** [OFFSHORE YACHTS](#)

**LOA:** 48' 0" (14.63 m)

**Year Built:** 1999

**Beam:** 15' 0" (4.72 m)

**Model:** 48 Pilothouse Motor Yacht

**Max Draft:** 13' 11" (4.25 m)

**Price:** \$579,000 USD Subject to change.

**Cruising Speed:** 14.50 Knots (16.69 MPH)

[See full listing on our website](#)

**Location:** Islamorada, United States

**Max Speed:** 16.50 Knots (18.99 MPH)

If you would like to buy a yacht **INDIGO - OFFSHORE YACHTS** or would like help answering any questions concerning purchasing, selling, or chartering a yacht, please call **+1(954)274-4435** or click here on <https://shestakovyachtsales.com>

---

# TABLE OF CONTENTS

---

<b>OVERVIEW .....</b>	<b>3</b>
<b>SPECIFICATIONS .....</b>	<b>4</b>
Basic Information .....	4
Dimensions .....	4
Speed, Capacities and Weight .....	4
Accommodations .....	4
Hull and Deck Information .....	5
Engine Information .....	5
<b>GALLERY .....</b>	<b>6</b>
<b>DETAILED DESCRIPTION .....</b>	<b>18</b>
<b>CONTACTS .....</b>	<b>30</b>

## OVERVIEW

---

Meticulously cared for throughout her life, INDIGO underwent a comprehensive refresh in 2012 with thoughtful, annual enhancements continuing through 2017, a period during which she completed two Great Loop passages. Her current owner, an accomplished yachtsman, took possession in the summer of 2021 and immediately set about further improvements before relocating INDIGO to the Florida Keys that autumn. From spring 2023 through fall 2025 she received a full professional exterior repaint alongside extensive additional upgrades. The engine room is clean and well maintained and the interior offers a warm, comfortable ambiance; with freshly painted topsides and new canvas, INDIGO presents virtually like new—a truly inviting luxury yacht for refined coastal and long-range cruising.

# SPECIFICATIONS

---

## Basic Information

---

**Model Year:**  
1999

**Country:**  
United States

**Year Built:**  
1999

## Dimensions

---

**LOA:**  
48' 0" (14.63 m)

**Max Draft:**  
13' 11" (4.25 m)

**Beam:**  
15' 0" (4.72 m)

## Speed, Capacities and Weight

---

**Cruise Speed:**  
14.50 Knots (16.69 MPH)

**Water Capacity:**  
300 Gallons

**Max Speed:**  
16.50 Knots (18.99 MPH)

**Fuel Capacity:**  
600 Gallons

## Accommodations

---

**Total Heads:**  
2

## Hull and Deck Information

---

**Hull Material:**

Fiberglass and Plastic Yachts

**Hull Designer:**

Bill Crealock

**Deck Material:**

Fiberglass

**Interior Designer:**

N/A

**Hull Configuration:**

Modified V-Hull

## Engine Information

---

**Engines:**

2

**Engine Type:**

Inboard

**Manufacturer:**

Cummins

**Fuel Type:**

Diesel

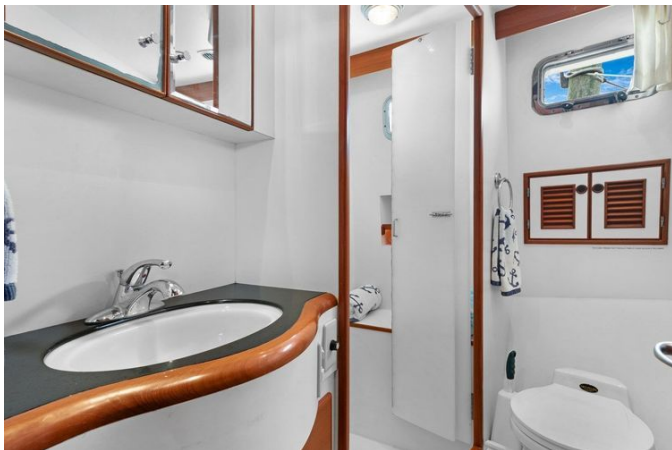
# GALLERY

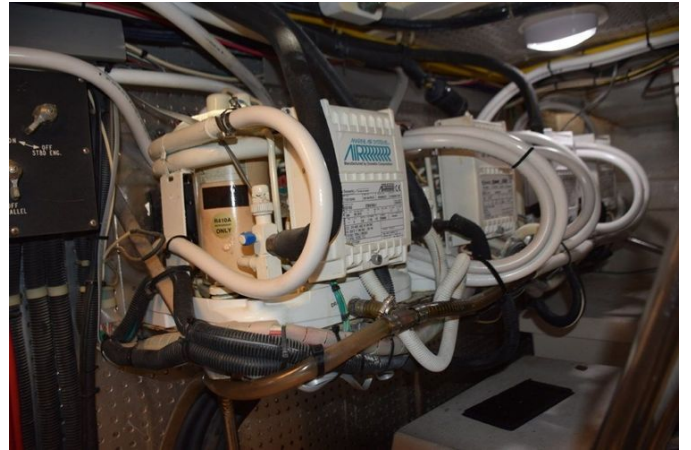






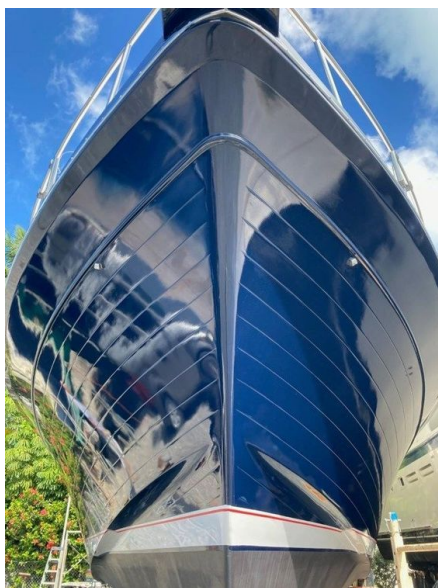


















---

# DETAILED DESCRIPTION

---

## Accommodations

---

Down a forward stairway on the starboard side of the pilothouse, the interior unfolds into two staterooms and two heads arranged for privacy and refined comfort. Midships, the master stateroom occupies the port side and is appointed with a walk-around queen berth featuring a padded headboard, built-in nightstands flanking the bed and wall-mounted reading lights. Two opening rectangular portholes to port admit natural light and are finished with drapes for privacy. Forward in the suite a two-door hanging locker stands alongside eight generous drawers and a raised counter shelf that displays a decorative lamp and a wall-mounted flat panel Samsung TV. To starboard, tucked discreetly behind the open cabin door, a cabinet contains a Splendide combo washer/dryer. Overhead dome lights are dimmer-controlled, and bound-edge carpeting overlays the elegant teak and holly sole.

Immediately aft of the washer/dryer on the starboard side, the private master head is fitted with a Freshwater VacuFlush toilet and a full-length Hi-Macs solid-surface black granite vanity with an undermounted oval porcelain sink and mirrored medicine cabinet. The bathing area is configured as a compact bathtub with a handheld shower wand. The head is air-conditioned and may be ventilated or brightened by two opening rectangular portholes.

Forward, the guest stateroom features a centerline queen berth with upper cove cabinets and reading lights positioned above the headboard. A small TV is mounted to port with countertop shelving on both sides for convenient storage, while two rectangular opening portlights dressed with small drapes and an overhead hatch with a screened panel provide ample daylight and ventilation. A hanging locker aft to starboard increases storage, and both staterooms share the warm, finely executed woodwork and teak and holly

soles finished with bound edge carpeting.

Located just aft of the forward guest stateroom, with a door opposite the stairway, the guest head doubles as a day head and mirrors the quality finishes found in the master head, with the added convenience of a separate shower stall.

## Factory supplied description

---

The Offshore 48 Pilothouse is constructed on a robust, hand-laminated fiberglass hull finished with an epoxy barrier coat, its form marrying a generous beam with a finely V-shaped entry and a deep forefoot that eases into a 12-degree deadrise at the transom; this hull geometry allows the yacht to come onto plane readily and to cleave through waves and chop with composure across the speed range. The standard exterior is appointed with two-tone, molded non-skid decks, while window frames, doors and hatches are molded in gel-coated fiberglass to eliminate the corrosion of aluminum and the deterioration of wood. Thoughtful detailing continues aft and on deck: the cockpit conceals a freshwater shower within a molded FRP cabinet, and the boat deck is engineered to drain internally to the waterline so that runoff is kept off the lower decks. Below, the interior is finished in hand-rubbed, satin-finish Burmese teak cabinetry and a teak-and-holly sole throughout, and the salon, staterooms, heads and galley are executed with the same level of craftsmanship and attention to detail that Offshore has upheld since 1948.

## Salon

---

Stepping in from the cockpit, the salon is arranged for refined comfort with an L-shaped lounge to port and a smaller settee to starboard, both finished in Ultraleather and complemented by matching valance panels, all grouped around a high-gloss teak drop-leaf Hi-Lo table. Recessed pin lights set in teak

trim rings provide layered illumination and are linked to dimmer control, consistent with the majority of the boat's lighting scheme, while broad deckhouse windows slide open to welcome fresh air; externally, snap-on Textilene mesh privacy covers deliver shade and discretion, and internally Oceanair roll-up blinds allow effortless control of light. In the aft starboard corner a Samsung 32" flat panel Smart TV (2025) rises smoothly on an electric lift from behind custom louvered doors, balanced by a built-in end table cabinet in the port aft corner. Forward to starboard a countertop, appointed with a decorative table lamp, visually anchors the salon opposite the Galley to port, and the entertainment system centers on a Fusion MS-UD750 stereo with Bluetooth, with a Fusion NRX-300 remote control head (2023) conveniently located at the starboard forward countertop. Access to the aft deck is via a smooth-gliding sliding door fitted with a roll-down insect screen, and beneath it all a classic Teak and Holly sole is softened underfoot by a carpet runner and tasteful area rugs.

## Galley

---

This impeccably appointed galley centers around a Sub Zero under-counter refrigerator paired with VitriFrigo under-counter drawers in the starboard cabinet that can be used as either refrigeration or freezing units, all framed by Hi Macs solid surface countertops finished in black granite. Meal preparation is effortless on the Force10 glass electric three burner stovetop, complemented by a Cuisinart convection/microwave oven, while a two basin stainless steel sink with a newer faucet houses an in sink garbage disposal and a dedicated filtered water tap; the space is delivered complete with a full set of galley cookware.

Storage has been thoughtfully integrated with overhead aft cabinetry, four slide outs beneath the countertop, a pantry opposite to starboard, and a cabinet on the port side of the steps leading up to the pilothouse, supported

by additional drawers throughout. An LED lighting strip tucked beneath the forward cabinetry illuminates the work surfaces, and a six bottle bar cabinet with a slide out drawer adjacent to the pilothouse ensures favorite vintages are always within easy reach.

## Master stateroom and head

---

A sumptuous walk around queen berth, fitted with a custom mattress, forms the centerpiece of the master, with matching nightstands on either side and generous hanging lockers plus abundant drawer storage providing exceptional stowage. Elegant solid surface countertops and a Samsung 19" flat panel TV enhance the cabin's refined feel, while dimmable overhead illumination and individual reading lamps allow complete control of the mood. For extended passages, a Splendide 2000 combo washer/dryer is neatly integrated for uninterrupted comfort. The ensuite head continues the same thoughtful luxury, appointed with a freshwater VacuFlush toilet, a shower stall incorporating a mini tub, and a Hi Macs solid surface black granite vanity topped by an oval undermount sink, all accompanied by a mirrored sundries cabinet for added convenience.

## Guest stateroom, forward

---

The forward guest stateroom is anchored by a generous centerline queen berth trimmed with an Ultrasuede headboard, while solid-surface countertops lend a polished, upscale finish to the space. Entertainment is provided by a ViewSonic 15-inch flat-panel TV, and a dedicated hanging locker along with ample drawer storage keeps garments and personal effects neatly organized.

## Guest head

---

Designed to marry refinement with everyday functionality, the guest head features a Hi-Macs solid-surface vanity in Black Granite crowned by an elegant oval undermounted sink, while drawers built into the sink vanity provide discreet, practical storage and a mirrored sundries cabinet secures grooming essentials out of sight. An upgraded VacuFlush freshwater head ensures dependable, modern sanitation, and the shower stall is fitted with a handheld shower wand that offers flexible, spa-like use.

## Pilothouse

---

The pilothouse presents a centered helm station with a refined captain's chair and sliding wing doors on each side, marrying traditional joinery with modern functionality. A six-spoke teak wheel anchors the console, while a trio of brass Weems & Plath instruments—barometer, thermometer and clock—lend an air of nautical tradition above the helm. Behind the helm a raised Ultraleather settee faces a high-gloss teak table, and opening overhead hatches with screens above both the seating area and the captain's seat draw in daylight and fresh breeze. To starboard, steps finished with a teak handrail lead up to the flybridge, and roll-up insect screens on both pilothouse sides add flexible ventilation and protection. The captain's chair received new white vinyl upholstery in 2023.

Suiting extended cruising, the navigation and electronics package is extensive: twin Garmin 5212 touchscreen GPS/chartplotter multifunction displays and a Garmin D22 Black Box depth sounder paired with a 50/200 kHz dual-frequency transducer, complemented by a Garmin open-array radar scanner installed new in 2025. Course-keeping is managed by a Simrad autopilot with AP28 control head, while communications and identification are handled by a Garmin GSH10 VHF with external speaker and volume control and a Garmin

AIS 600 transceiver. Closed-circuit Garmin cameras keep watch over the aft deck and the engine room, a Ritchie PowerDamp magnetic compass provides steadfast heading reference, and VDO gauges and tachometers—complete with rudder angle indicator—together with three electric windshield wipers support confident, informed passage-making. Entertainment is provided by a KVH M5 satellite TV antenna plus a second dome housing three DirecTV receivers (not currently in use), and cabin audio is delivered through stereo speakers with an accessible volume control.

Operational convenience and safety are addressed with a Side-Power DC bow thruster operated by handheld remote, a Maxwell windlass control remote, an intercom system with handsets in the engine room and forward stateroom, and a high-water bilge alarm, creating a pilothouse designed for assured command and enduring comfort.

## Custom disclaimer and exclusions

---

The particulars of this vessel are presented in good faith; however, neither the accuracy of these details nor the condition of the vessel can be guaranteed or warranted. Prospective buyers are encouraged to instruct their brokers or independent surveyors to examine and verify any information they consider material. This vessel is offered subject to prior sale, change of price, or withdrawal without notice. A number of personal effects remain aboard and may be excluded from the sale, and a detailed list of exclusions will be provided upon request when accompanied by a written offer; specifically excluded are the remote-mounted Starlink antenna and router, dive and fishing equipment, charts, photos, and certain pieces of artwork.

## Description

---

New to the market, INDIGO exemplifies Offshore Yachts' well-conceived

48-foot Pilothouse design. The main salon flows seamlessly into the galley on a single level, with an aft door that opens onto the covered afterdeck and provides access to the walk around side decks. Moving forward from the salon, three steps ascend into the pilothouse, where wing doors on both sides and a raised lounge settee with an aft table create a refined social helm area. A stairway on the starboard aft leads up to the flybridge, while the stateroom deck is reached by a graceful curved stair to starboard of the centerline helm. Below decks are two double staterooms with heads, laid out to maximize storage and make efficient use of the available volume.

INDIGO has benefited from conscientious ownership throughout her life, undergoing a comprehensive refit beginning in 2012 with continuing annual updates into 2017, and she is reported to have completed two Great Loop cruises during that interval. Her current owner, a seasoned yachtsman, took possession in the summer of 2021 and initiated further enhancements before relocating INDIGO to the Florida Keys that autumn. From spring of 2023 through fall of 2025 she received a full exterior paint renewal, executed to a high standard and accompanied by extensive additional updates. The engine room is tidy and well cared for, the interior presents as warm and inviting, and with fresh paint and new canvas the exterior has the appearance and presence of a boat renewed.

## Flybridge

---

Forward at the helm, two Pompanette fiberglass P2000 captain's chairs with fiberglass backs and cushioned armrests preside over a beautifully arranged command station equipped with a Garmin 8616 GPS/Chartplotter touchscreen (new in 2025), a Simrad autopilot AP44 control head (also new in 2025), a Garmin GHS10 VHF/Hailer with remote speaker, Side-Power bow thruster controls, a PowerDamp magnetic compass and trim tab toggle control with synchronizer switch. A tinted Plexi venturi windscreen set in polished stainless

steel provides protection and visibility underway, while a fiberglass radar arch supports a white powder-coated aluminum framework that extends forward beneath a freshly laced Stamoid top. The flybridge is enclosed by a track-to-track, three-sided shelter trimmed in blue canvas with side U-zips and forward EZ2CY panels, new in 2021.

Just abaft to port, an inviting L-shaped settee with storage beneath the seats wraps around a table mounted on a new aluminum base with a white starboard top, and an overlay panel increases the dining surface for added comfort. Blue-and-white striped cushions and crisp white painted surrounds and tabletop create a refined, nautical ambiance. To starboard a cabinet conceals a Norcold DC drink refrigerator and a sink, with additional storage integrated for convenience. Immediately aft of the settee, chocks secure the RIB tender alongside an electric davit, and at the aft edge of the bridge a newer emergency canister liferaft is stowed and ready. Access is effortless via steps up from the pilothouse with an aft ladder descending to the aft deck, and Navy Sunbrella canvas covers, new 2024–2025, protect the helm, tender, foredeck hatch and cockpit, with a second set of Stamoid covers supplied for storage periods.

## Hull

---

INDIGO received an extensive, top-tier paint and refit program carried out over two seasons while ashore in Islamorada, Florida. During 2023–2024 the deckhouse was refinished in Cloud White, with every window removed and professionally re-bedded, all seams re-caulked and sealed, and every porthole and hatch replaced; the deckhouse brow was treated with a non-skid finish both to minimize glare and to improve onboard safety. In 2025 the hull was repainted Flag Blue from the waterline up to the rub rail, and the stainless-steel strike plate on the railing was upgraded to a new solid piece. Earlier, in 2020, the bottom was stripped and barrier coated, complemented by

a crisp white boot stripe with a red pin accent and a black antifouling bottom. Additional enhancements include newly fitted multi-color-changing underwater lights installed in 2025, heavy-duty four-blade primary propellers, and a three-blade set of spare propellers reconditioned by Wildcat and securely stored in the lazarette.

## Deck equipment

---

A polished anchor-ready bow pulpit with dual rollers presides forward, complemented by a discreet freshwater washdown spigot housed in an adjacent hatch, supporting a mounted plow anchor with approximately 300 feet of chain. A secondary Danforth Fortress FX37 is installed with 25 feet of lead chain and 250 feet of nylon rode, all confidently handled by a Maxwell 2200 electric windlass with wildcat. Fenders and dock lines are neatly stowed in four purpose-built racks along the bow rail and two additional racks on the flybridge, while a newly upholstered foredeck bench seat with cushion (2024) offers a refined spot for repose. Secure footing is provided by welded stainless steel bow and side deck railings and matching railings on the flybridge, and wide side decks with raised bulwarks lead via two steps from the deckhouse sides to the pilothouse and bow levels. Boarding is made effortless through port and starboard gates, routine washdowns are simplified by a cockpit freshwater spigot (2023), and the cockpit's varnished teak cap rail is preserved beneath blue Sunbrella covers (2024), with a stainless steel flagstaff mounted aft.

Protective and aesthetic enhancements include Textilene deckhouse snap-on window covers (2025) and a forward windshield canvas mask (2024) that safeguard the glass, while Kahlenberg dual trumpet air horns announce your approach with presence. Launching and recovery are simplified by a Marquipt electric davit upgraded with a new motor and cable (2025), supported by dinghy chocks and straps securing the 2013 AB/Mares 10.5' center console RIB

tender, which is fitted with a Garmin GPS/plotter/depth unit, a new helm seat backrest, and a 20 hp Tohatsu four-stroke outboard. Practical details include a custom hinged stainless steel anchor light mount at the mast and an elevated safety provision in the form of a Datum emergency container liferaft housed in a quick launch cradle (2024).

## Cockpit

---

The cockpit is appointed with meticulously laid teak decking and features deck hatches that grant access to the lazarette and the aft engine room door, while a walkthrough transom door provides effortless passage to and from the water. The starboard-side cockpit helm, complete with wheel and engine controls, places command within easy reach, and a central cabinet conceals a VitriFrigo ice maker installed in 2025 for chilled refreshments on demand. After a swim, a hot-and-cold cockpit shower wand housed in a molded fiberglass box restores comfort, and upgraded docking lights added in 2024 together with LED cockpit lighting extend usability well into the evening. A molded fiberglass swim platform teamed with a stainless swimming ladder makes water entry simple, while two fishing rod holders and a Magma stainless steel propane grill set the scene for both angling pursuits and leisurely al fresco meals. Ambience and situational awareness are elevated by stereo speakers and a Garmin backing camera, and mooring operations are simplified by a combined stainless hawse pipe and cleat at the transom. For additional assurance under any circumstance, a stainless steel emergency tiller is stowed ready for use.

## Electrical

---

At the heart of the electrical installation sits a Northern Lights 12 kW generator housed in a sound shield and showing approximately 4,200 hours, supplying a

comprehensive 240 V AC ship's system that is managed from a pilothouse breaker panel with full switching. This AC system is paired with a parallel 12 V DC network, also controlled from a dedicated pilothouse breaker panel and equipped with battery monitoring. Shore power is provided via 50-amp connections port and starboard forward, with an additional 50-amp inlet located in the cockpit for flexible marina connections, and a 50-foot shore power electrical cord (2022) for convenient dockside hookup. Onboard energy management is handled by a Magnum Energy charger/inverter with pilothouse display, complemented by a ProNautic 12-60P Smart battery charger installed in 2024. The battery complement includes AGM house batteries, AGM main engine start batteries fitted with shutoff switches and a parallel switch, plus a dedicated generator start battery. Blue Sea 7610 120V isolators are installed to reduce voltage drop throughout the system, and alternator charging from the port engine provides reliable battery replenishment while underway.

## Engine room

---

Power is provided by twin Cummins CTA 8.3 Diamond Series 450 diesel engines, each mated to ZF transmissions with a 2.55:1 reduction. Engine operation is governed by Hynautic controls with Glendinning mechanical synchronization and Hynautic wheel steering for precise helm feel. Fuel polishing is handled through Racor primary filters equipped with vacuum gauges for both the mains and the generator, and shaft reliability is assured by Tides driplless shaft logs. The machinery space is appointed with a teak-and-holly center sole and monitored by an onboard engine room camera. Fire suppression is distributed via a Fireboy system, and dewatering capability includes an emergency bilge pumping arrangement supported by three automatic/manual bilge pumps, gray water sump boxes and a high-water bilge alarm. Recent mechanical attention includes an exhaust system overhaul in 2022, cooler service in 2023 and sea water pump servicing in 2026, all aided by

bespoke engine room ventilation and blower systems.

Comfort and onboard systems are equally well-specified: four Dometic/Marine Air reverse-cycle air-conditioning units, all recently installed, provide climate control, while hot water is supplied by a Torrid heater tied into an engine heat exchanger. Freshwater pressure is maintained by a Jabsco Flo-Jet system with an accumulator tank. The heads discharge to a holding tank fitted with a TankWatch III monitor and deck pump-out, and all head hoses have been renewed. For extended cruising independence there is a Spectra 200T watermaker—installed in 2015 but pickled and unused since 2022—with its remote control panel conveniently located in the pilothouse.

## Broker comments

---

INDIGO presents an elevated combination of exceptional comfort and meticulous care, benefitting from deliberate ownership and an ongoing program of improvements. Over the past fifteen years, nearly every system aboard has been modernized, replaced, or at the very least extensively serviced, yielding enhanced reliability and contemporary functionality throughout. Under the current ownership her appearance has been transformed by a comprehensive paint program, leaving the yacht with an outstanding finish and striking visual appeal.

# CONTACTS

---

Shestakov Yacht Sales is a brokerage company specializing in the sale and service of yachts worldwide. The company offers services for buying and selling both new and used motor yachts, sailing vessels, and luxury superyachts. They also provide yacht registration, insurance, technical maintenance, crew selection, and charter organization services across the U.S., Canada, Latin America, the Caribbean, and the Bahamas.

The founder and lead broker of the company is Andrey Shestakov, a licensed and certified expert with extensive experience in marine engineering and shipbuilding.

The company has an extensive network of partnerships with major yacht manufacturers worldwide and provides services in multiple languages, including Russian, Ukrainian, Spanish, and English. The office is in Dania Beach, Florida, USA.

For more information and to view available yachts, you can visit the company's official website: <https://shestakovyachtsales.com>

## Contact details

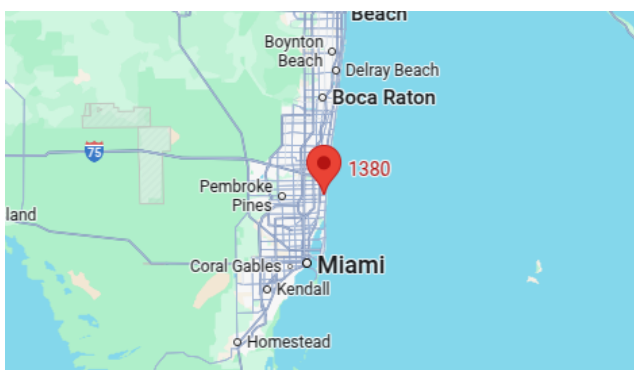
---

**Phone:** +1(954)274-4435

**Email:** [andrey@shestakovyachtsales.com](mailto:andrey@shestakovyachtsales.com)

## Address

---



1380 Weeping Willow Way, Hollywood,  
Florida 33019