

## F4.9 - PRESTIGE



**Builder:** [PRESTIGE](#)

**LOA:** 49' 0" (14.94 m)

**Year Built:** 2025

**Beam:** 14' 0" (4.52 m)

**Model:** F4.9

**Max Draft:** 12' 7" (3.83 m)

**Price:** - Subject to change.

**Cruising Speed:** 21 Knots (24.17 MPH)

[See full listing on our website](#)

**Location:** Wilmington, United States

**Max Speed:** 28 Knots (32.22 MPH)

---

# TABLE OF CONTENTS

---

<b>OVERVIEW .....</b>	<b>3</b>
<b>SPECIFICATIONS .....</b>	<b>4</b>
Basic Information .....	4
Dimensions .....	4
Speed, Capacities and Weight .....	4
Accommodations .....	5
Hull and Deck Information .....	5
Engine Information .....	5
<b>GALLERY .....</b>	<b>6</b>
<b>DETAILED DESCRIPTION .....</b>	<b>18</b>
<b>CONTACTS .....</b>	<b>21</b>

## OVERVIEW

---

Shaped by the rhythm of the sea, the F4.9's redesigned hull flows into luminous living spaces where daylight pours freely. Every contour is carefully carved to lend the profile a gentle elegance, measured poise, and an unmistakable sense of power. Both exterior lines and interior appointments have been rethought to offer effortless comfort to everyone aboard, defining a luxury motor yacht that is equally an elegant flybridge yacht and a capable cruising yacht built for smooth, unfettered passages.

Handpicked surfaces—natural stone, carved timber and woven wicker—introduce tactile warmth and restrained glamour throughout. From Garroni Design, the F4.9 heralds the next F Line generation, bringing greater comfort and a remarkable standard of craftsmanship and finish to the premium motor cruiser.

---

# SPECIFICATIONS

---

## Basic Information

---

**Category:**  
Motor yachts

**Year Built:**  
2025

**Sub category:**  
Motor Yacht

**Country:**  
United States

**Model Year:**  
2025

## Dimensions

---

**LOA:**  
49' 0" (14.94 m)

**Max Draft:**  
12' 7" (3.83 m)

**Beam:**  
14' 0" (4.52 m)

## Speed, Capacities and Weight

---

**Cruise Speed:**  
21 Knots (24.17 MPH)

**Water Capacity:**  
155 Gallons

**Max Speed:**  
28 Knots (32.22 MPH)

**Fuel Capacity:**  
343 Gallons

## Accommodations

---

**Total Heads:**

2

## Hull and Deck Information

---

**Hull Material:**

Fiberglass and Plastic Yachts

**Hull Designer:**

N/A

**Deck Material:**

Fiberglass

**Interior Designer:**

N/A

**Hull Configuration:**

N/A

## Engine Information

---

**Engines:**

2

**Engine Type:**

Inboard

**Manufacturer:**

Volvo

**Fuel Type:**

Diesel

# GALLERY



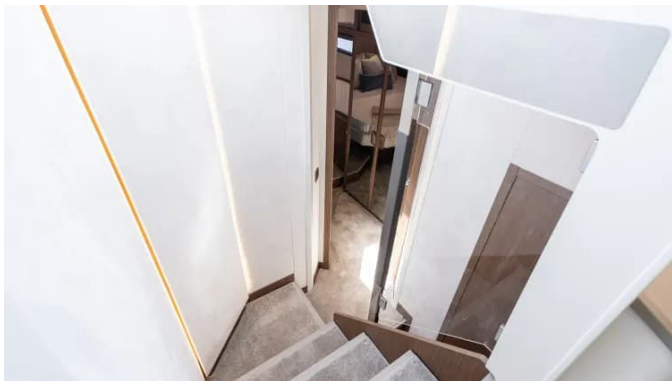






















---

# DETAILED DESCRIPTION

---

## Factory installed options

---

Specified with an exceptionally comprehensive suite of factory-installed enhancements, this yacht arrives turnkey and meticulously curated, marrying thoughtful comfort with high-performance systems. Climate control is assured by a tropical chilled-water air-conditioning system rated at 60,000 BTU, complemented by a dedicated 4,000 BTU air-conditioning unit for the skipper cabin; passenger comfort is enhanced by an opening port-side window and porthole mosquito screens, while leisure and sun protection are delivered through a bow sun mattress with protective cover, a retractable foredeck canopy, an electric cockpit sun awning, and an elegantly finished Bamboo flybridge hard-top complete with a matching flybridge galley and a set of white flybridge covers. Exterior livability continues with exterior upholstery in Bamboo and external window curtains SW, a silken silicone cover for the grill, fender storage integrated into the forward pulpit, and a stainless-steel anchoring kit, while underwater lights, a deck searchlight and LED spots extend enjoyment and safety from dusk to dawn; the hydraulic swim platform simplifies water access and tender handling for effortless on-water living. Precision navigation and situational awareness are delivered by a Garmin AIS 800 transceiver, a Garmin open-array radar and an upgraded Garmin 16" screen on the flybridge helm replacing the 12" display, all backed by a Chirp ClearVü/SideVü sonar to reveal beneath-the-surface detail, and vigilance is further reinforced by a GC200 marine monitoring camera in the engine room and a GC 200 day/night vision transom camera, each networked through the electronic package and the Ship Control connection for seamless oversight. Confident motion at sea is anchored by a gyroscopic stabilizer NG6 and a Volvo virtual anchor, while close-quarters control is effortless thanks to a bow

thruster with controls at two stations and an extra IPS joystick in the cockpit. Performance and reliability are hallmark features of the Volvo IPS 650 propulsion with two D6-480 HP engines and joysticks, supported by a dual switchable fuel filter for clean, uninterrupted running, and the cockpit adopts the facing seating version for convivial gatherings; dummy satellite domes GTV5, installed in a symmetrical pair, impart a balanced, purposeful profile. Inside, craftsmanship and acoustics set a refined tone: brushed light oak hardwood flooring graces the entrance, saloon and steps, interior woodwork in Sand Oak harmonizes throughout with a dedicated skipper cabin in Sand Oak, and carpets soften the saloon and cabins, including the three cabins and two toilets, while upgraded galley countertops in natural stone Bianco Polare elevate the finish. Immersive sound is delivered by a Bowers & Wilkins sound package, augmented by a Bowers & Wilkins 2.1 system with amplifier in the master stateroom to create a cinematic listening environment. Hospitality essentials include an ice maker 115V 60Hz, pre-wiring for a dishwasher 115V 60Hz, a combined washing machine 110V, TV pre-install and electric saloon stores; valuables are protected by an electronic safe and day-to-day cleanliness is preserved with a cordless vacuum cleaner. Restful nights are ensured by innerspring mattresses in the master and VIP staterooms and the tactile appeal of Cuddly upholstery, while practical peace of mind is built in through an automatic fire extinguisher, a battery monitoring system and the English owner's manual; the North American package aligns onboard systems to regional expectations. Every detail, from radar to upholstery, coalesces into a cohesive, luxurious specification that amplifies ease, serenity and control on every passage.

## Disclaimer

---

All particulars of this yacht are offered in good faith for general guidance, yet no guarantee is made as to the accuracy of the information or the present

condition of the vessel. The offering is subject to prior sale, price change, or withdrawal from the market without notice, and any details are provided as a courtesy to clients and do not constitute, and are not intended to imply, a definitive representation or warranty regarding a specific yacht.

# CONTACTS

---

Shestakov Yacht Sales is a brokerage company specializing in the sale and service of yachts worldwide. The company offers services for buying and selling both new and used motor yachts, sailing vessels, and luxury superyachts. They also provide yacht registration, insurance, technical maintenance, crew selection, and charter organization services across the U.S., Canada, Latin America, the Caribbean, and the Bahamas.

The founder and lead broker of the company is Andrey Shestakov, a licensed and certified expert with extensive experience in marine engineering and shipbuilding.

The company has an extensive network of partnerships with major yacht manufacturers worldwide and provides services in multiple languages, including Russian, Ukrainian, Spanish, and English. The office is in Dania Beach, Florida, USA.

For more information and to view available yachts, you can visit the company's official website: <https://shestakovyachtsales.com>

## Contact details

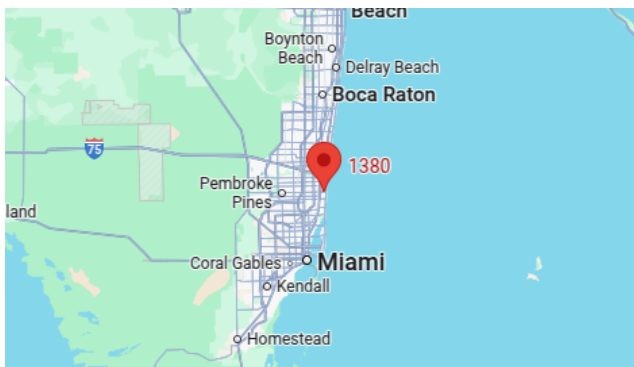
---

**Phone:** +1(954)274-4435

**Email:** [andrey@shestakovyachtsales.com](mailto:andrey@shestakovyachtsales.com)

## Address

---



1380 Weeping Willow Way, Hollywood,  
Florida 33019