



ALIZE V - BRUCKMANN



Builder: [BRUCKMANN](#)

LOA: 50' 0" (15.24 m)

Year Built: 2021

Beam: 15' 0" (4.57 m)

Model: Abaco 50

Min Draft: 15' 7" (4.75 m)

Price: \$1,695,000 USD Subject to change.

Max Draft: 15' 7" (4.75 m)

[See full listing on our website](#)

Location: Goderich, Canada

Cruising Speed: 25 Knots (28.77 MPH)

Max Speed: 30 Knots (34.52 MPH)

If you would like to buy a yacht **ALIZE V - BRUCKMANN** or would like help answering any questions concerning purchasing, selling, or chartering a yacht, please call **+1(954)274-4435** or click here on <https://shestakovyachtsales.com>

TABLE OF CONTENTS

OVERVIEW	3
SPECIFICATIONS	4
Basic Information	4
Dimensions	4
Speed, Capacities and Weight	5
Accommodations	5
Hull and Deck Information	5
Engine Information	6
GALLERY	7
DETAILED DESCRIPTION	13
CONTACTS	19

OVERVIEW

ALIZE V is an exquisitely realized Bruckmann Abaco, perhaps the most refined example of this celebrated series. Commissioned in Canada by a returning Bruckmann yachtsman, she was designed to stand apart with classic Downeast lobster yacht motor yacht lines, exquisite artisan joinery, and carefully considered, user friendly appointments at every turn. Sleeping up to five in two ensuite cabins, she combines those accommodations with an airy, sociable express cruiser layout that invites sunset cocktails as readily as extended coastal passages. Presenting with low hours, exceptional mechanical condition and cosmetics, and efficient single engine performance, ALIZE V appears as a true turnkey luxury cruiser, ready to go.

SPECIFICATIONS

Basic Information

Category:
Motor yachts

Year Built:
2021

Sub category:
Motor Yacht

Country:
Canada

Model Year:
2024

Dimensions

LOA:
50' 0" (15.24 m)

Beam:
15' 0" (4.57 m)

Min Draft:
15' 7" (4.75 m)

Max Draft:
15' 7" (4.75 m)

Speed, Capacities and Weight

Cruise Speed:

25 Knots (28.77 MPH)

Water Capacity:

100 Gallons

Max Speed:

30 Knots (34.52 MPH)

Fuel Capacity:

430 Gallons

Gross Tonnage:

15 Pounds

Accommodations

Sleeps:

5

Total Heads:

2

Hull and Deck Information

Hull Material:

Fiberglass and Plastic Yachts

Hull Designer:

Mark Ellis

Deck Material:

Fiberglass

Interior Designer:

Mark Bruckmann

Hull Configuration:

N/A

Engine Information

Engines:

1

Engine Type:

Inboard

Manufacturer:

Caterpillar

Fuel Type:

Diesel

GALLERY

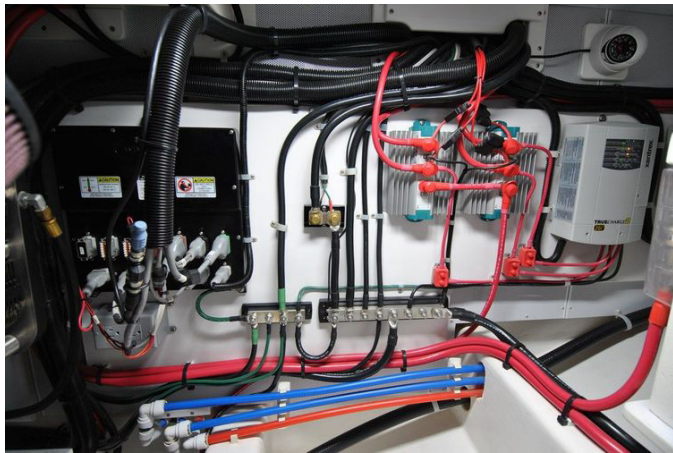
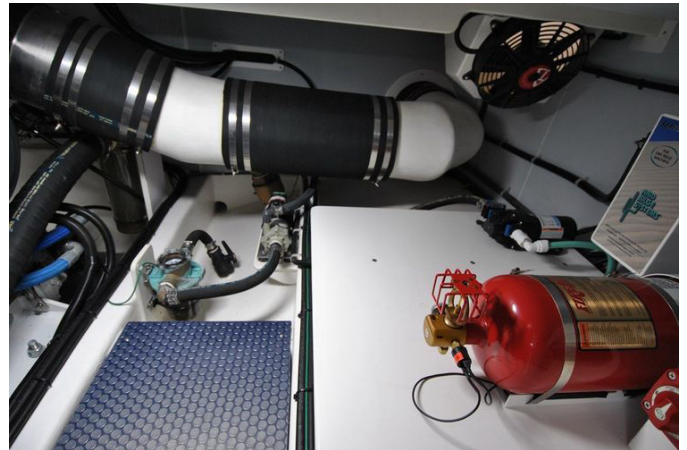












DETAILED DESCRIPTION

Overview

ALIZE V stands as the last and most refined expression of the limited Bruckmann Abaco series, commissioned by a seasoned yachtsman who had already built two Bruckmanns and understood precisely the level of craftsmanship the yard delivers. Determined to own something genuinely distinctive amid a sea of common brands and mainstream styling, he specified a boat of impeccable build, real capability, and impressive efficiency—equally at home serving cocktails at anchor or stretching her legs on an extended cruise. Inspectors will find ALIZE V in excellent mechanical and cosmetic condition, truly turnkey and ready to go. Notable highlights include her status as the final build of the Abaco series; an efficient single Caterpillar C18 with less than 100 hours; accommodations for up to five guests in two ensuite staterooms; bow and stern thrusters that make close-quarters handling intuitive and precise; a salon bathed in natural light that opens seamlessly to a generous aft cockpit for effortless entertaining and long-range comfort; and overall condition that is exemplary throughout.

Accommodations

ALIZE V features a traditional and thoughtful layout: a generous V berth forward serves as the master, while a twin berth cabin lies to starboard, and both cabins enjoy the privacy of ensuite heads. The galley to port is cleverly open overhead to the windshield, drawing in natural light and preserving clear sightlines to the exterior and the salon. The salon itself offers an inviting L shaped settee to port and a straight settee to starboard just abaft the helm, and aft a beautifully engineered sliding door opens two-thirds of the aft bulkhead to create an open, free flowing connection to the cockpit—perfect

for socializing, cocktail cruising, and entertaining on board.

Saloon

The saloon invites relaxed living with an L shaped dinette to port and a straight settee to starboard, centered on a custom high low dining table that shifts effortlessly from coffee to dinner height. Entertainment is at hand with a pop up/drop down TV to starboard, while four large overhead hatches fitted with Oceanair blinds and screens flood the space with breeze and daylight. Underfoot, a timeless teak and holly sole complements beadboard overhead paneling with teak batons, and the satin varnished teak joinery gleams with tasteful high gloss accents. Dual sliding aft doors with screens open a full two thirds of the cabin's width to the cockpit, extending the living area outdoors, and two Stidd helm chairs, port and starboard sliding windows with blinds, and discreet overhead LED lighting complete the saloon's blend of comfort, style, and function.

Galley

The galley to port is finished with a durable Corian countertop and outfitted for gourmet practicality: a two burner induction cooktop, a two basin stainless sink with matching Corian cover, a Vitrefrigo stainless refrigerator, a SeaFrost cold plate freezer compartment, and a Sharp drawer style convection microwave oven. Abundant stowage keeps service ware and provisions neatly organized, a large opening port with screen ushers in fresh air, and overhead LED lighting ensures a bright workspace day or night.

Master stateroom

The master stateroom forward is appointed in satin finished teak with tasteful

high gloss trim, anchored by an oversized V berth over a classic teak and holly sole. Natural light and ventilation arrive via an overhead hatch with Oceanair blind and screen and two stainless opening ports with screens, while thoughtful storage is everywhere, from hanging lockers and generous drawers to outboard over bunk lockers and even a dry storage area beneath the sole. Comfortable ambience comes by way of both mood and overhead lighting and two dedicated reading lamps, with additional airflow aided by two DC fans.

Ensuite master head

The ensuite master head is crisply executed with a Dometic freshwater flush head, a Corian countertop, and a porcelain wash basin, brightened by an overhead hatch with Oceanair blind and screen and tempered by a Dorade vent and two stainless portlights with screens. An evacuation fan manages humidity, and a full size stall shower with seat adds genuine home style comfort; this shower is also accessible from the lower companionway, providing convenient guest access when desired.

Guest twin cabin

The guest twin cabin to starboard is a welcoming retreat with twin berths and ensuite privacy, its comforts enhanced by the same crisp finishes found throughout the yacht. Within the suite, the appointments include a Corian countertop and porcelain wash basin paired with a Dometic freshwater flush toilet, ventilation via a stainless opening port with screen and an overhead Dorade vent, an overhead hatch with Oceanair blind and screen for light and breeze, plus an evacuation fan and overhead lighting to keep the space dry, bright, and pleasant.

Ensuite guest head

The ensuite guest head mirrors the yacht's refined standard with a Corian countertop, porcelain wash basin, and Dometic freshwater flush toilet, supported by practical ventilation through a stainless opening port with screen and an overhead Dorade vent. An overhead hatch with Oceanair blind and screen brings daylight and airflow, while an evacuation fan and overhead lighting ensure a fresh, well lit space at all times.

Hull and deck equipment

Built on a fiberglass vinylester resin hull and deck with Core Cell foam coring, with core thoughtfully removed around all thru hulls, shaft logs, rudder ports, and the centerline skeg, ALIZE V is engineered for strength and longevity. A fiberglass centerline prop protecting skeg, Awlgrip Flag Blue hull paint, and a teak aft deck with white caulking set the tone, while practical cruising features abound: an extended swim platform with tender chocks and swim ladder, a transom door to the platform, generous cockpit storage and a cockpit table, and a full aft cockpit cover with side enclosures complemented by a cockpit awning and a windshield sun cover. Safety and service items include four automatic bilge pumps and an integrated manual bilge pump, dual density engine sound insulation, two exterior Dorade boxes with stainless cowl vents, assorted life jackets, fenders, and lines, plus smoke and carbon monoxide detectors. On deck, a raw water washdown spigot in the anchor locker, three Exalto wipers with freshwater rinse, a Muir stainless anchor windlass feeding a double bow roller, and an Ultra Anchor with high test galvanized chain and rope rode round out a cruising package that is both elegant and eminently practical.

Electronics and navigation

Navigation and situational awareness are centered on two Furuno TZT12F displays serving radar, plotter, and sounder duties, supported by a Furuno FM 4800 VHF and a Furuno autopilot. Systems status is neatly consolidated on a Maretron DSM410 monitoring fuel, freshwater, and waste levels, while two vessel monitoring cameras—one on the mast and one in the engine room—keep watch. The helm features three Exalto wipers with dedicated controls, a Zipwake control pad, a Miur windlass control panel, Twin Disk QuickShift throttle and gear control, Side Power bow and stern thruster controls, and comfortable Stidd helm and companion chairs focused on a teak rimmed Edson destroyer wheel and a Ritchie Powerdamp compass. LED navigational lights and a horn complete a professional grade helm environment.

Machinery and electrical

Power comes from a Caterpillar C18 1136 hp main engine (55hrs 1/2026) turning through a Twin Disk 2.00:1 transmission to a five blade bronze ZF propeller measuring 32" x 37", with a bronze rudder, a dripless shaft seal, and raw water intake strainers supporting reliable underway operation. A 7.5 kW Cummins Onan generator (5hrs 1/2026) provides ship's power, while a Delta T custom exhaust ventilation system and a Reverso oil change system (main engine, transmission, generator) simplify maintenance. Dockside and electrical systems are equally robust: two Side Power 24 V thrusters (bow and stern), an ANG BOOST 12.5 kVA shore power converter/booster, all wiring sized and color coded to ABYC specs, a 24 V DC custom distribution panel with digital meters, and 125 V/240 V 50 Amp custom AC power distribution panels with digital meters. Shore power is via 50 Amp service with two connections, charging handled by a Xantrex TrueCharge 2 20 A/24 V charger for the engine

battery bank and a ProMariner ProSport HD6 6 A charger for the generator bank. Underway composure is enhanced by a Zipwake trim tab system that also adds active stability, and bilge dryness is assured by an Arid Bilge Series 2 system. Additional systems include hydraulic steering, dual Racor fuel filters, an 11 gallon hot water heater, two Dometic freshwater flush heads, and a Haylon Fireboy fire extinguishing system.

Broker remarks

ALIZE V is the third hull of the Bruckmann Abaco 47 series, with the tooling stretched an additional 3' to create more volume in the salon and cockpit—a change that not only elevated comfort and utility but also improved performance. The result is, without a doubt, the most comprehensively equipped and efficiently performing yacht in her market segment, with head turning lines along the waterway and exceptional attention to detail inside and out. She is notably efficient and highly maneuverable around the docks, and at sea she settles into a smooth, comfortable motion. Reported performance places her happily on plane between 18 and 26 kt (20 kt at 50% engine load consuming 18 gph; 26 kt at 80% load consuming 37 gph) with a solid top end over 30 kt—remarkable numbers for a single screw yacht with fully protected running gear and a skeg hung rudder.

CONTACTS

Shestakov Yacht Sales is a brokerage company specializing in the sale and service of yachts worldwide. The company offers services for buying and selling both new and used motor yachts, sailing vessels, and luxury superyachts. They also provide yacht registration, insurance, technical maintenance, crew selection, and charter organization services across the U.S., Canada, Latin America, the Caribbean, and the Bahamas.

The founder and lead broker of the company is Andrey Shestakov, a licensed and certified expert with extensive experience in marine engineering and shipbuilding.

The company has an extensive network of partnerships with major yacht manufacturers worldwide and provides services in multiple languages, including Russian, Ukrainian, Spanish, and English. The office is in Dania Beach, Florida, USA.

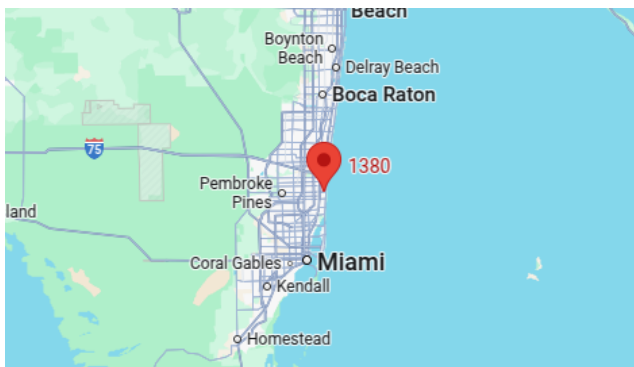
For more information and to view available yachts, you can visit the company's official website: <https://shestakovyachtsales.com>

Contact details

Phone: +1(954)274-4435

Email: andrey@shestakovyachtsales.com

Address



1380 Weeping Willow Way, Hollywood,
Florida 33019