



SHESTAKOV

Yacht Sales

## YOLO - FAIRLINE



**Builder:** [Fairline](#)

**Beam:** 14' 0" (4.47 m)

**Year Built:** 2014

**Max Draft:** 13' 1" (4 m)

**Model:** 50 CRUISER

**Price:** \$375,000 USD Subject to change.

[See full listing on our website](#)

**Location:** Playa Herradura, Costa Rica

**LOA:** 50' 0" (15.24 m)

If you would like to buy a yacht **YOLO - FAIRLINE** or would like help answering any questions concerning purchasing, selling, or chartering a yacht, please call **+1(954)274-4435** or click here on <https://shestakovyachtsales.com>

---

# TABLE OF CONTENTS

---

<b>OVERVIEW .....</b>	<b>3</b>
<b>SPECIFICATIONS .....</b>	<b>4</b>
Basic Information .....	4
Dimensions .....	4
Speed, Capacities and Weight .....	4
Accommodations .....	4
Hull and Deck Information .....	5
Engine Information .....	5
<b>GALLERY .....</b>	<b>6</b>
<b>DETAILED DESCRIPTION .....</b>	<b>17</b>
<b>CONTACTS .....</b>	<b>27</b>

## OVERVIEW

---

Embark aboard the 2014 Fairline Squadron 50, YOLO, and enter a motor yacht that redefines luxury through thoughtful design and refined execution. The interior flows with purpose, offering generous volumes and a calming atmosphere in the forward master stateroom while an open, sociable galley occupies the heart of the yacht to keep guests naturally engaged. Above, a sweeping flybridge serves as an alfresco sanctuary where the freedom of open air meets the comfort of a grand salon. Built to Fairline's exacting standards, YOLO combines enduring construction with lively performance, and her appointments reflect that pedigree—from the Sony Bravia TV and Cruisair air conditioning in the salon to a fully equipped galley and welcoming guest cabins each with private en suite facilities. Navigation and onboard audio are confidently handled by Garmin systems and Fusion entertainment, delivering precise control and immersive sound. Elegantly styled and meticulously maintained, this yacht arrives ready for immediate enjoyment: as of June 2025 she has fresh bottom paint, PropSpeed applied to the running gear and all new zincs, emphasizing turnkey readiness for your next offshore voyage. Contact Los Sueños Marina, Costa Rica to schedule a private viewing and experience YOLO for yourself.

# SPECIFICATIONS

---

## Basic Information

---

**Model Year:**  
2014

**Country:**  
Costa Rica

**Year Built:**  
2014

## Dimensions

---

**LOA:**  
50' 0" (15.24 m)

**Max Draft:**  
13' 1" (4 m)

**Beam:**  
14' 0" (4.47 m)

## Speed, Capacities and Weight

---

**Water Capacity:**  
145 Gallons

**Fuel Capacity:**  
604 Gallons

## Accommodations

---

**Total Heads:**  
2

## Hull and Deck Information

---

**Hull Material:**

Fiberglass and Plastic Yachts

**Hull Designer:**

N/A

**Deck Material:**

Fiberglass

**Interior Designer:**

N/A

**Hull Configuration:**

N/A

## Engine Information

---

**Engines:**

2

**Engine Type:**

Inboard

**Manufacturer:**

CAT

# GALLERY





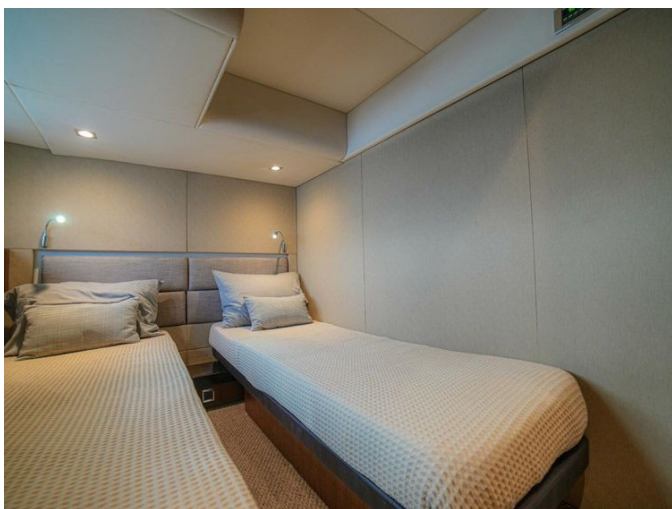


















---

# DETAILED DESCRIPTION

---

## Manufacturer provided description

---

The most striking feature of this newest Squadron is the abundance of intelligently designed, usable space compared with yachts in the same size bracket, a quality that immediately signals its innovative approach. To deliver what once seemed unattainable, the conventional design playbook was rewritten: bulkheads have been shifted aft and the bow broadened, producing generously proportioned living areas rather than simple cabins. The forward master, although located in the bow, impresses with its exceptional beam and airy dimensions, while the galley is thoughtfully sited so the chef remains connected to the social flow rather than isolated. Above deck, the flybridge abandons the confines of a traditional helm platform and instead reads as an expansive, elegant lounge beneath the open sky.

## Hullform and construction

---

Every layer of gel coat and fibreglass is meticulously hand-laid using unidirectional, biaxial and woven rovings, finished with an isophthalic gel coat over an isophthalic resin-rich, powder-bound glass mat to deliver enduring strength and durability. The hull features full-length antifouling protection and a continuous hull form with moulded spray deflectors running the full length, while the hull-to-deck join is tapped and bonded to ensure uncompromising structural integrity. The underwater profile presents a pronounced deep-V at the bow, fairing aft to a 12.5° deadrise, and is reinforced throughout by both transverse and longitudinal stringers with integrally moulded engine bearers for precise machinery alignment. The deck construction incorporates polyurethane foam cores to provide exceptional stiffness and thermal insulation, and large feature windows with opening portholes infuse the

interior with abundant natural light. Precise handling is aided by a bow thruster, and the overall design, layout and detailing are by the Fairline Design Team with naval architecture and structural engineering by Bernard Olesinski.

## Deck salon

---

The deck salon is designed as a refined haven for relaxation, appointed with a Sony Bravia 32-inch power-up flat-screen TV while aluminium venetian blinds gently modulate daylight to create an elegant atmosphere. A folding dining table with hi/lo adjustment offers versatile entertaining options, complemented by a sofa with stowage and a sideboard with dedicated crockery stowage for tidiness and convenience. Overhead ceiling lights cast a warm glow and strategically placed 110v outlets keep devices and essentials powered. A sliding patio door to the cockpit, fitted with pleated blinds, extends the living space seamlessly to the outdoors, and climate comfort is precisely managed by Cruisair AC.

## Galley

---

Meticulously arranged for carefree voyages, the galley is appointed with aluminum Venetian blinds and aft pleated blinds to give precise control over incoming daylight, while discreet overhead lighting bathes the random teak floor in a warm, inviting glow. Culinary tasks are handled with ease and sophistication thanks to a Dometic two-burner cooktop and a Sharp microwave oven, supported by an extractor fan and an integrated waste bin that keep the workspace tidy. Cold provisions are accommodated by an Isotherm refrigerator alongside a Vitrifrigo freezer drawer, and a sink fitted with a hot and cold mixer tap simplifies cleanup. Thoughtful storage is provided by multiple stowage cupboards and drawers, and strategically located 110-volt outlets enhance convenience; the environment remains

comfortable under Cruisair air conditioning and essential protection is provided by a fire extinguisher.

## Deck

---

The deck is meticulously appointed, with an anchor chain locker housing a calibrated chain that feeds a self-stowing Delta® anchor, deployed via an electric anchor winch with dedicated controls. Forward, integrated foredeck lockers and moulded non-slip drinks holders are recessed into the deck and protected by a stainless steel pulpit, while stainless steel bow, spring and stern cleats, together with stainless steel bow and aft fairleads, make every mooring manoeuvre effortless. Seamanship is supported by a full set of IMCO navigation lights, a riding light and a remotely controlled searchlight, complemented by twin horns for clear signalling and two speakers mounted on the bow rail for on-deck entertainment. After a swim, a hot and cold transom shower and a teak-laid platform offer comfort and secure footing, with convenient water fillers nearby and excellent visibility preserved by windscreen wipers and washers.

## Lobby

---

Functioning as an elegant central hub, the lobby provides immediate access to the electrical control panel and flows effortlessly toward the master cabin, the two guest cabins and the day head. A secure handrail offers confident support while discreet lighting in the stair risers and abundant overhead fixtures bathe the space in a warm, assured glow. For added comfort and convenience, an Isotherm refrigerator is positioned to keep chilled refreshments close at hand.

## Master stateroom

---

Tranquil and luxuriously appointed, the master stateroom is centered around a queen berth with an integrated drawer beneath, crowned by a bespoke headboard finished with coordinated shams and cushions. Dedicated reading lamps to port and starboard create intimate pools of light, while practical storage is provided by a full height shelving cabinet, a hanging locker with a mirrored door and a full length mirror to simplify dressing. Daylight fills the cabin through port and starboard windows fitted with blinds and opening portholes, complemented by a skylight with blind and an escape hatch forward to the foredeck for added ventilation and safety. Stowage is generous, with five overhead lockers and a vanity unit complete with stool offering a private grooming area. Entertainment and climate control are handled with a Philips flat screen TV, a Fusion MS RA205 stereo and Crusair air conditioning, and convenient 110V outlets are thoughtfully located for device charging. Plush carpeting underfoot completes this serene, refined retreat.

## Master en suite

---

An atmosphere of refined comfort greets you as the en suite door, fitted with decorative feature glass, opens onto a luminous cabin lined with feature windows and a single opening porthole. The full size shower, complete with a comfortable seat, hinged door and solid teak gratings, delivers a true spa like retreat while an automatic shower tray pump out system and a powerful extractor fan ensure effortless drainage and fresh air. The Jabsco toilet is paired with a hinged toilet cover that doubles as additional work surface, and a comprehensive complement of bathroom fittings, mirrored lockers and a discreet towel rail complete the thoughtfully appointed layout. Overhead luminaires are softened by an LED night light beneath the lockers for gentle after dark illumination, and the random teak flooring adds warm, nautical

character underfoot, with a 110v GFI outlet providing modern convenience without compromising the suite's elegant ambiance.

## Port guest cabin

---

A feature window with a single opening porthole floods the port guest cabin with daylight, creating an airy retreat where considered design meets sumptuous comfort. Pleated blinds provide discreet privacy and precise control over light levels, while two full-length berths can be joined with an insert to form a king-size bed, adapting effortlessly to different guest arrangements. Storage is abundant and thoughtfully laid out, featuring mid-level lockers and a closet with mirrored doors that both conceal possessions and enhance the sense of volume. Ambient overhead lighting is complemented by intimate reading lights for individual comfort, and conveniently positioned power points ensure devices remain charged and ready throughout the voyage.

## Starboard guest cabin

---

Pleated blinds grace the cabin's feature windows, which include a single opening porthole that ushers in soft daylight and a refreshing sea breeze, creating an atmosphere of calm. A bedside table sits between two full-length berths that effortlessly slide together to form a generous double when required, while abundant storage is provided by mid-level lockers, under-bed compartments and a wardrobe finished with mirrored doors. The lighting scheme combines gentle overhead illumination with directed reading lights to cultivate the ideal ambiance, and convenient 110-volt outlets accommodate personal electronics. Entertainment is handled by a Samsung flat screen paired with a Fusion MS-RA205, and climate is precisely controlled by Cruisair AC, all set atop plush carpeting that completes the cabin's refined comfort.

## Starboard guest cabin en suite

---

Bathed in abundant natural light from three generous hull windows, one of which is an opening porthole, the starboard guest cabin en suite boasts convenient day access and a polished, highly practical layout. A white sink fitted with a chromed Hansgrohe faucet is paired with mirrored lockers, a refined towel rail and overhead ceiling lights that together create a calm vanity area. Comfort and ventilation are assured by an extractor fan and an electric Jabsco toilet, while the full standing-height shower—set over solid teak gratings and enclosed by a hinged acrylic door—features an automatic shower tray pump-out system. Beneath it all, a random-laid teak floor lends warmth and a timeless sense of character to the space.

## Helm position

---

Crafted to deliver complete command with effortless refinement, the flybridge helm marries professional navigation equipment with high-end comfort. At its heart sits a Garmin GPS Map 7612 paired to a Garmin Autopilot, supported by a Garmin echosounder and a speedometer/distance log repeater that also reports seawater temperature, while a Garmin radar GMR 24 HD is mounted aloft on a GRP radar mast. Communications and entertainment are elevated by a VHF radio with intercom and a Fusion MS-RA70WSX, and steering is intuitive via powered steering, a conventional steering wheel and electronic single-lever throttle and gear controls for both port and starboard engines. Bowthruster controls, a helm position indicator and a Ritchie high speed magnetic compass provide precise handling, with remote anchor winch operation, trim tab controls, bilge pump warning lights with audible alarms, duplicated engine bay fire extinguisher controls and repeat flybridge engine instrumentation, controls and electronics all readily to hand. A Jabsco remote-control searchlight is operable from either helm for assured night-time

visibility. Practical details include a twelve-volt heavy-duty weatherproof socket, an access hatch, protective instrument covers and a moulded non-slip deck surface, while teak-laid steps lead between levels. Comfort is addressed with a bespoke Bimini top, acrylic dodgers and a wind-deflecting screen with grab rail, bolstered helm seating with companion accommodation, convenient drinks holders and a flybridge bar unit complete with sink and waste bin. The helm is set to port to ensure clear sightlines through the flybridge hatch, and the adjacent upholstered seating with table converts into a cushioned sunbathing area, complemented by a separate sunbed with under-seat storage to finish the alfresco arrangement.

The lower helm continues this theme of precise control and considered ergonomics, centered on a Garmin GPS MAP 7612 XSV and a Garmin GHC 10 digital multi-function instrument system with colour display, fuel gauges and comprehensive engine instrumentation including tachometers, temperature gauges, audible alarms and engine hour meters. Controls mirror the flybridge with powered steering, an adjustable tilt steering wheel, electronic single-lever throttle and gear controls for port and starboard engines, bowthruster controls, a helm position indicator, trim tab control, remote anchor winch operation and Jabsco searchlight controls. Safety and vessel management are enhanced by bilge pump switches with integral operating warning lights and audible alarms, dedicated controls for the engine bay Fireboy fire extinguisher system and switches for navigation and riding lights, windscreen wipers and engine bay extractor fans. An Icom command mic keeps communications immediate, while a Ritchie magnetic compass, black mesh sun covers for the forward and side screens, an opening starboard window, red night-light helm illumination, teak-laid flooring, drinks holders and a twelve-volt socket complete a thoroughly considered and seagoingly practical helm station.

## Aft

---

Both the aft utility room and the optional aft cabin are reached via a hatch from the cockpit; the utility area is bathed in soft light from overhead ceiling fixtures and provides a practical wet-hanging zone together with conveniently placed power points. The optional aft cabin, likewise accessed through the cockpit hatch, is appointed with a Jabsco toilet and a full-length sliding berth that, when retracted, reveals the concealed sink and toilet, and is further enhanced by mid-level lockers, a mirror, an opening porthole, overhead lighting and 110v outlets. Underfoot a random teak floor introduces warmth and texture, while the sink, fitted with a hot-and-cold mixer tap, is set beneath a transom feature window with a blind to balance natural light and privacy.

## Cockpit

---

Descend into a cockpit conceived for both refined comfort and straightforward functionality, where a 12V heavy-duty weatherproof socket powers essential equipment and direct access to the aft utility room and side deck keeps movement aboard effortless. Expansive seating is complemented by discreet deck-level lighting, while teak-laid decking flows across the self-draining cockpit to deliver lasting elegance beneathfoot. Serviceability is simple thanks to an engine bay access hatch held by stainless-steel gas struts, and manual bilge pumps stand ready as a dependable backup. Safe boarding and water access are assured via twin transom gates, and launching your tender is effortless with the Fairline tender launch system complete with cleats and strap.

## Interior furnishings

---

Whether you prefer the timeless refinement of the Classic line or the sportier aesthetic of the Sport Collection, upholstery can be styled with the Fairline

Décor Collections — an all encompassing range of interior and exterior fabrics, carpets and protective covers. Each component is curated exclusively by the Fairline Interior Design Department to deliver a harmonious, sophisticated atmosphere throughout the yacht.

## Tankage

---

The propulsion and stern arrangements have been engineered to deliver dependable power and discreet refinement, beginning with aerodynamically profiled engine air intakes and extending to an automatic engine bay fire extinguishing installation. Automatic bilge pumps protect the forward bilge, engine bay and rudder bay while a manual 'on' override provides direct control when required. Robust continuity of operation is assured through dripless shaft seals, electric engine bay fan(s), dedicated lighting for the engine space, comprehensive acoustic insulation in the engine room and an exhaust overheat warning system. A high-capacity emergency manual bilge pump, complete with its own dedicated valves, stands ready as an additional safeguard alongside hydraulic trim tabs, manganese bronze 'P' brackets, contra-rotating manganese bronze propellers, sea cocks fitted to every inlet and outlet below the waterline and stainless steel alloy shafts.

The fuel arrangement is built for versatility and control: a changeover valve system permits each engine to draw from and return fuel to either tank, while emergency fuel shut-off valves can be operated remotely by cable.

High-capacity water separators and fuel filters protect the engines, and individual fillers and vents to port and starboard simplify servicing. Fuel is contained within two marine-grade alloy tanks.

Domestic water is provided by an automatic pressurised system that supplies a calorifier hot water setup and feeds one or more dedicated water tanks.

## **U.S.A. specifications in addition to or in lieu of those listed above**

---

Configured specifically for the U.S. market, the yacht's refined electrical architecture utilizes a 2 × 110V arrangement, combining to provide 220V at 60Hz and ensuring flawless integration with shore power and all onboard electrical systems.

# CONTACTS

---

Shestakov Yacht Sales is a brokerage company specializing in the sale and service of yachts worldwide. The company offers services for buying and selling both new and used motor yachts, sailing vessels, and luxury superyachts. They also provide yacht registration, insurance, technical maintenance, crew selection, and charter organization services across the U.S., Canada, Latin America, the Caribbean, and the Bahamas.

The founder and lead broker of the company is Andrey Shestakov, a licensed and certified expert with extensive experience in marine engineering and shipbuilding.

The company has an extensive network of partnerships with major yacht manufacturers worldwide and provides services in multiple languages, including Russian, Ukrainian, Spanish, and English. The office is in Dania Beach, Florida, USA.

For more information and to view available yachts, you can visit the company's official website: <https://shestakovyachtsales.com>

## Contact details

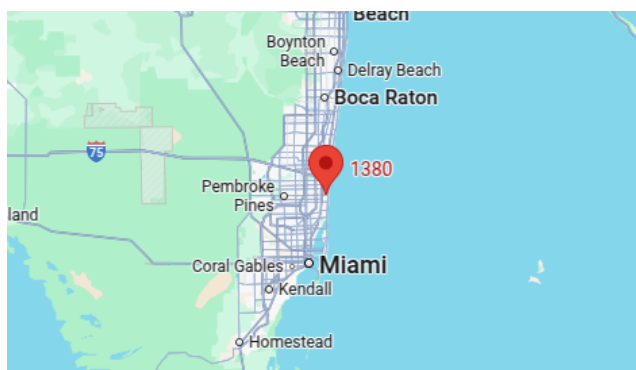
---

**Phone:** +1(954)274-4435

**Email:** [andrey@shestakovyachtsales.com](mailto:andrey@shestakovyachtsales.com)

## Address

---



1380 Weeping Willow Way, Hollywood,  
Florida 33019