

YOU AND I - FAIRLINE



Builder: [Fairline](#)

LOA: 50' 0" (15.43 m)

Year Built: 2014

Beam: 14' 0" (4.32 m)

Model: Targa 48 Open

Max Draft: 3' 10" (1.17 m)

Price: \$614,006.36 USD Subject to change.

Cruising Speed: 25 Knots (28.77 MPH)

[See full listing on our website](#)

Location: Murter, Croatia

Max Speed: 35 Knots (40.28 MPH)

TABLE OF CONTENTS

OVERVIEW	3
SPECIFICATIONS	4
Basic Information	4
Dimensions	4
Speed, Capacities and Weight	5
Accommodations	5
Hull and Deck Information	5
Engine Information	6
GALLERY	7
DETAILED DESCRIPTION	15
CONTACTS	18

OVERVIEW

This exquisite 2014 Fairline Targa 48 Open presents an ideal entry into yacht ownership or a refined choice for those who delight in independent cruising. With a push-button retractable roof that opens the cockpit to sun and sea, the vessel invites effortless alfresco living and elevates every voyage.

The yacht "You and I" offers two thoughtfully arranged guest cabins, beginning with a generous full-beam master suite complete with an en-suite bathroom for privacy and comfort, and a flexible twin cabin in the bow whose sliding berths can be combined to form a double. The bow cabin's bathroom is also configured to serve as a convenient day head, enhancing the boat's practical layout.

Inside, the saloon is appointed with inviting L-shaped seating that converts into an extra sleeping area when the removable table is stowed, accommodating additional guests with ease. The galley is efficiently fitted with a refrigerator, stove, and microwave, allowing for relaxed meal preparation while underway. Handling is made simple and precise by the IPS system, complemented by a Dockmate wireless remote control for effortless maneuvering. A hydraulic platform provides swift access to the water and makes launching the included Williams 285 tender straightforward, adding a versatile and stylish auxiliary craft to this yacht.

Explore yacht sales in the current boat location and take the opportunity to acquire a vessel that harmonizes luxury and practicality.

SPECIFICATIONS

Basic Information

Category:
Motor yachts

Year Built:
2014

Sub category:
Motor Yacht

Country:
Croatia

Model Year:
2014

Dimensions

LOA:
50' 0" (15.43 m)

Max Draft:
3' 10" (1.17 m)

Beam:
14' 0" (4.32 m)

Speed, Capacities and Weight

Cruise Speed:

25 Knots (28.77 MPH)

Water Capacity:

116.24 Gallons

Max Speed:

35 Knots (40.28 MPH)

Fuel Capacity:

356.63 Gallons

Gross Tonnage:

23.95 Pounds

Accommodations

Total Heads:

2

Crew Berths:

1

Hull and Deck Information

Hull Material:

Fiberglass and Plastic Yachts

Hull Designer:

Olesinski

Deck Material:

Fiberglass

Interior Designer:

Bernard Olesinski

Hull Configuration:

Monohull

Engine Information

Engines:

2

Engine Type:

Inboard

Manufacturer:

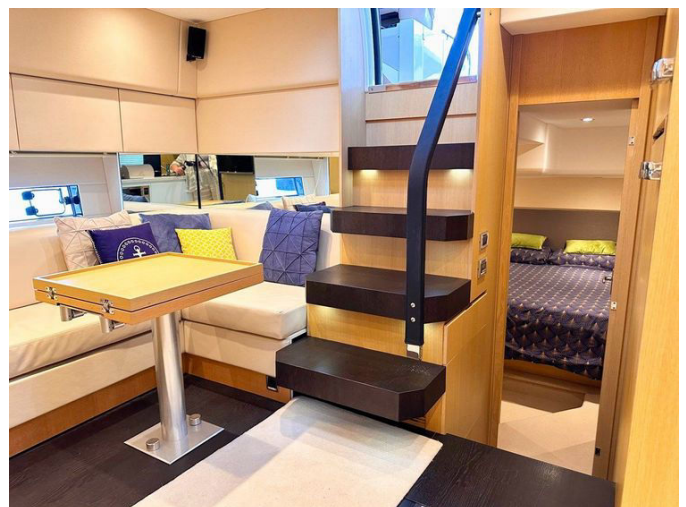
Volvo Penta

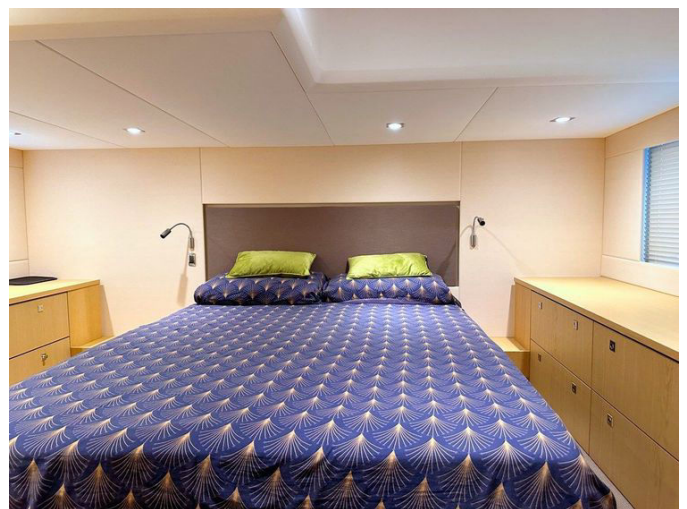
Fuel Type:

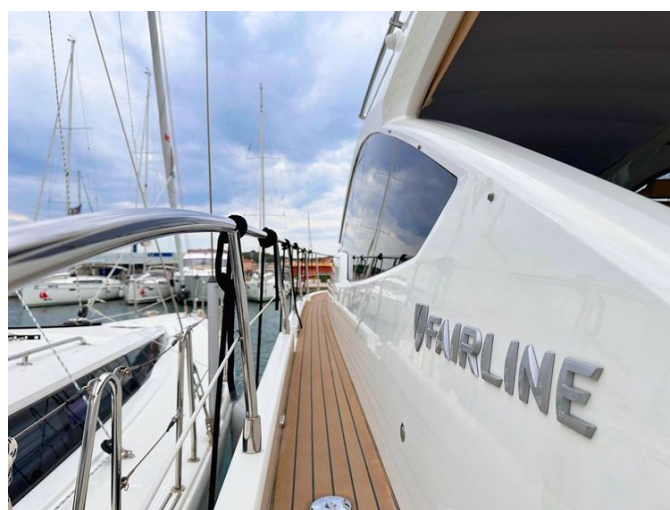
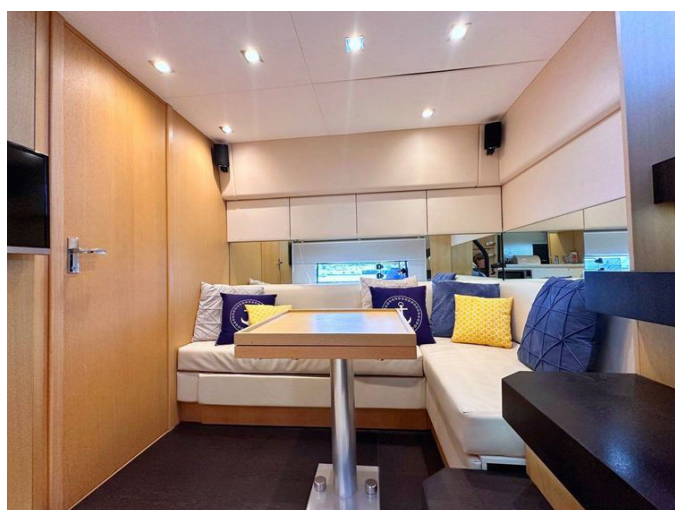
Diesel

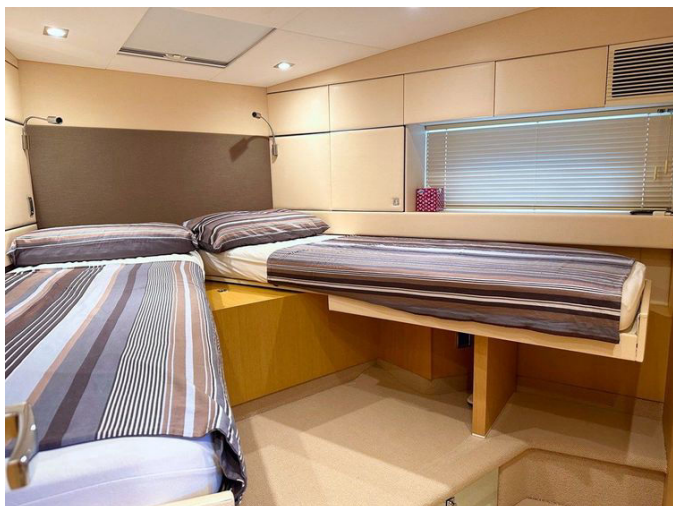
GALLERY



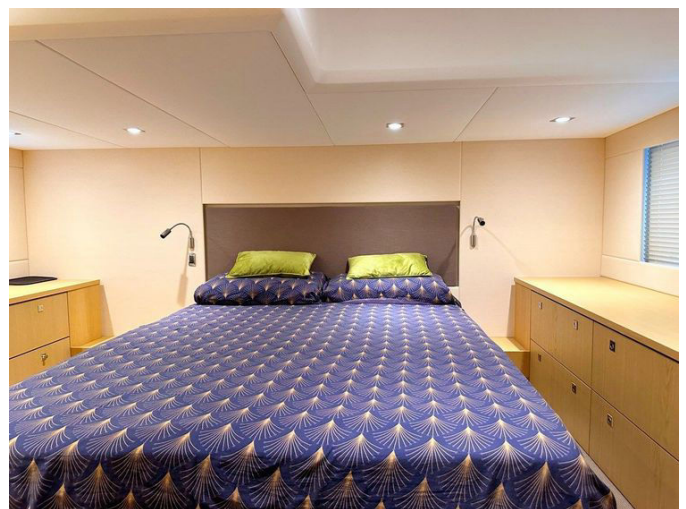














DETAILED DESCRIPTION

Equipment

The yacht's hull and deck are meticulously crafted, providing antifouling protection and a deep V hull design that ensures a smooth and stable ride, while the Fairline design team has refined every detail from full-length moulded spray deflectors to a hard top with an electric sliding canvas roof for effortless shelter and ventilation. Structural integrity is assured by integrally moulded engine bearers, transverse and longitudinal strengthening stringers and polyurethane foam cores that deliver high strength alongside excellent thermal insulation. Deck equipment is specified for practical use and ease of operation, including an electric anchor winch, a calibrated anchor chain and a self-stowing Delta® anchor all controllable from the helm, while a dinghy garage cleverly doubles as a sunbathing area and the teak-laid bathing platform offers an optional submersible retractable feature for enhanced versatility. Stainless steel fittings such as bow fairleads, cleats, handrails and a pulpit contribute both durability and refined maritime elegance. The cockpit is conceived for comfort and functionality, with a central dining area, companion seating adjacent to the helm and generous stowage options to keep lines and gear organised. The saloon is a haven of relaxation, where a cocktail table converts to a dining table, a 22" LED TV complements audio entertainment provided by a radio with an iPod dock, and soft furnishings create an inviting social space. Accommodation is thoughtfully laid out: the master cabin features a full-length double bed, bedside tables and a vanity unit, while the forward cabin offers a double bed that converts to a V-berth to suit different sleeping arrangements. The bathroom is appointed with an electric silent-flush freshwater toilet, a full standing-height shower and a Foundations® vanity unit, combining practicality with understated style. The galley is a chef's

delight, equipped with a two-burner gas hob, oven and grill alongside a tall fridge/freezer with automatic 12V/240V change-over for seamless power management. The engine room is soundproofed and hardened for reliable operation, fitted with automatic bilge pumps, an engine bay fire extinguisher system and electric trim tabs with cathodic protection to preserve hull integrity. The electrical installation is robust, featuring heavy-duty circuit breakers, isolating switches and a regulated battery charger to ensure dependable power distribution. At the helm, a Garmin digital multi-function instrument system, a VHF marine radio and an IPS joystick provide modern navigation, communication and precise control, while the overall package reads as a masterpiece of design and engineering that delivers unparalleled luxury and performance on the water.

Key features

This yacht is conceived for versatility and effortless living aboard, offering a convertible guest cabin that adapts to your needs whether you are hosting additional guests or require extra space, while the saloon provides an additional berth to expand sleeping accommodations and ensure comfortable overnighting. Manoeuvrability is exceptional thanks to the Dockmate remote control paired with an IPS joystick for precise low-speed handling and confident docking, and the Volvo Penta engine has been serviced and is fully prepared for the 2025 season to deliver dependable performance and peace of mind. Sold together with a Williams 285 tender, the yacht's offering is complemented by a versatile and spirited companion craft that enhances day-to-day exploration and enjoyment on the water.

Tender

The yacht is supplied with a Williams 285 tender, a perfectly matched

companion crafted for spirited exploration and practical shore access; renowned for its performance and reliability, the tender combines compact dimensions for easy stowage and rapid deployment with ample power and inherent stability, making it ideal for short transfers to shore, leisurely bay cruises or active waterside adventures, and thereby significantly enhancing the overall yachting experience.

CONTACTS

Shestakov Yacht Sales is a brokerage company specializing in the sale and service of yachts worldwide. The company offers services for buying and selling both new and used motor yachts, sailing vessels, and luxury superyachts. They also provide yacht registration, insurance, technical maintenance, crew selection, and charter organization services across the U.S., Canada, Latin America, the Caribbean, and the Bahamas.

The founder and lead broker of the company is Andrey Shestakov, a licensed and certified expert with extensive experience in marine engineering and shipbuilding.

The company has an extensive network of partnerships with major yacht manufacturers worldwide and provides services in multiple languages, including Russian, Ukrainian, Spanish, and English. The office is in Dania Beach, Florida, USA.

For more information and to view available yachts, you can visit the company's official website: <https://shestakovyachtsales.com>

Contact details

Phone: +1(954)274-4435

Email: andrey@shestakovyachtsales.com

Address



1380 Weeping Willow Way, Hollywood,
Florida 33019