



SHESTAKOV

Yacht Sales

DULZURA - SUNSEEKER



Builder: [Sunseeker](#)

Beam: 14' 0" (4.50 m)

Year Built: 2019

Max Draft: 14' 2" (4.33 m)

Model: 50 Predator

Price: \$775,000 USD Subject to change.

[See full listing on our website](#)

Location: Beaufort, United States

LOA: 50' 0" (15.24 m)

If you would like to buy a yacht **DULZURA - SUNSEEKER** or would like help answering any questions concerning purchasing, selling, or chartering a yacht, please call **+1(954)274-4435** or click here on <https://shestakovyachtsales.com>

TABLE OF CONTENTS

OVERVIEW	3
SPECIFICATIONS	5
Basic Information	5
Dimensions	5
Speed, Capacities and Weight	5
Accommodations	5
Hull and Deck Information	6
Engine Information	6
GALLERY	7
DETAILED DESCRIPTION	19
CONTACTS	29

OVERVIEW

This Sunseeker Predator 50 represents a meticulously specified iteration of one of the yard's signature sport yacht lines, a model family long associated with refinement and instant recognition within the yachting world. Built on Sunseeker's reputation for superior craftsmanship, performance and design flair, this Predator 50 balances alfresco living, brisk passage-making and everyday practicality with elegant restraint. Its retractable hardtop, flexible cockpit layout and genuine two-stateroom accommodation make the yacht equally at home as a glamorous dayboat, an effortless weekend cruiser or a base for extended stays ashore.

Carefully chosen upgrades raise the specification to a beyond-standard level: twin Volvo Penta D8 inboard V-drives with joystick control provide intuitive handling, while a beach club-style drop-down transom fitted with a grill, dedicated seating and integrated lighting turns the waterline into a private waterfront lounge. A hydraulic swim platform rated for 661 lbs of lift and an integrated tender recovery system streamline launch and retrieval of toys, and the Garmin navigation suite—featuring dual 16" displays and an open array radar—gives confidence and clarity at the helm. Tropical-spec air conditioning rated at 78,000 BTU keeps the interior comfortable in warm climates, the retractable hardtop together with an electric stern canopy allow shade and shelter on demand, and enhanced audio/visual systems elevate the onboard atmosphere from bow to stern.

Underway, the D8 powerplants deliver refined thrust, assured acceleration and composed sea-keeping, while bow and stern thrusters allied with Volvo Penta electronic steering and controls make tight manoeuvres straightforward for an owner-operator. The result is a performance motor yacht that handles with the diplomacy of a high-end express cruiser—engineered for smooth passages and responsive behavior in a variety of conditions.

The exterior living spaces are conceived for versatility and a close relationship with the sea. A folding glazed door opens the cockpit seamlessly into the salon to create one expansive entertainment environment, and with the hardtop retracted and the stern canopy deployed the main deck can be transformed from a sun-drenched terrace into a protected lounge in moments. At the transom, the beach club-style drop-down platform invites waterside dining and evening swims and is complemented by the hydraulic lift and tender system for effortless water access.

Below decks, a gloss walnut joinery scheme, upgraded soft goods and hardwood flooring establish a contemporary, refined interior palette. The two-cabin layout offers a full-beam owner's suite amidships and a forward VIP that converts from a double to twin berths to suit family or guests, with each stateroom served by a well-equipped head. The upgraded entertainment package is specified throughout, reinforcing the yacht's modern luxury credentials.

Altogether, this Predator 50 stands out as a comprehensively equipped, thoughtfully appointed sport cruiser that combines spirited performance, everyday usability and considered value, creating a compelling proposition for today's discerning buyer.

SPECIFICATIONS

Basic Information

Model Year:
2019

Country:
United States

Year Built:
2019

Dimensions

LOA:
50' 0" (15.24 m)

Max Draft:
14' 2" (4.33 m)

Beam:
14' 0" (4.50 m)

Speed, Capacities and Weight

Water Capacity:
119 Gallons

Fuel Capacity:
576 Gallons

Accommodations

Total Heads:
2

Hull and Deck Information

Hull Material:

Fiberglass and Plastic Yachts

Hull Designer:

N/A

Deck Material:

Fiberglass

Interior Designer:

N/A

Hull Configuration:

Modified V-Hull

Engine Information

Engines:

2

Engine Type:

Inboard

Manufacturer:

Volvo Penta

Fuel Type:

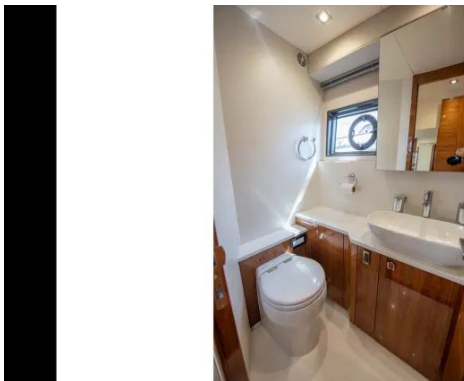
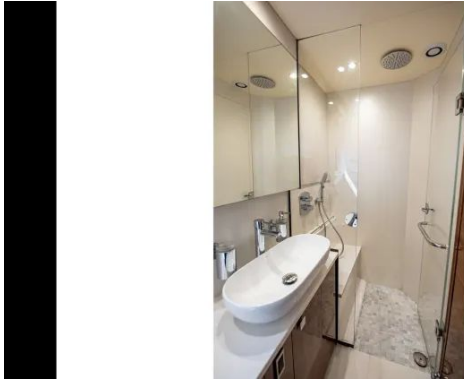
Diesel

GALLERY



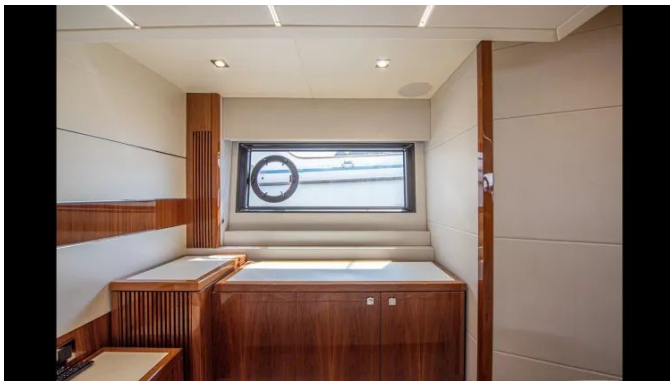






















DETAILED DESCRIPTION

Options

Driven by twin Volvo Penta D8 600 engines, each rated at 600 PS, this yacht offers confident performance supported by a joystick driving and docking system, the Volvo Penta electronic steering, a bow thruster with proportional joystick and a stern thruster with proportional control for exceptionally precise maneuvering. Comfort and autonomy at anchor are assured by a Cummins Onan 13.5 kW generator and a tropical specification air-conditioning system delivering 78,000 BTU, while a hydraulic lifting swim platform capable of approximately 661 pounds simplifies launch and recovery of a tender. Extended cruising is made easier with an upgraded 82-gallon black water tank, a grey water system with discharge and a comprehensive freshwater arrangement that includes a transom shower, deck wash, a Whale Twister handheld shower and a marina connection pressure regulator, and the hull has been treated with a full antifouling application.

The helm is arranged for clear, authoritative navigation with twin Garmin 16-inch multifunction displays, the primary unit fully integrated with EVC to present navigation, autopilot, engine data, alarms, cruise control, single-lever operation and a trip computer, complemented by a second 16-inch Garmin screen to broaden situational awareness. The suite is rounded out by a Garmin GMR 424 xHD2 open array radar with a four-foot antenna, Garmin VHF 300i with AIS and a Garmin GMI 20 multifunction colour display, while an electric opening drop window to starboard at the helm provides ventilation and uninterrupted communication with the deck.

Electrical distribution and lighting are controlled through the Sunseeker CM8 integrated power management, monitoring and control system with dedicated displays in both the galley and at the helm, while shore power is handled

smoothly by the Glendenning Cablemaster shore power system with power feed and recovery. Atmosphere is adjustable via dimmer switches for interior and exterior overhead lighting, supported by four Lumishore underwater lights and a low-level LED package comprising side deck and cockpit lights—ten per side—blue foredeck seating lights—four—and blue aft cockpit and step illumination.

Entertainment is deployed throughout the yacht with a consistent specification: the salon features a Samsung 40-inch TV on a fall-and-rise mechanism paired with a Fusion MS-AV755 source unit with Bluetooth and Fusion speakers, while the master cabin, forward cabin and lower saloon each boast their own Samsung 40-inch TV, Fusion MS-AV755, Bluetooth connectivity and Fusion ceiling speakers. Outside, the aft cockpit is served by Sonance speakers fed through an amplifier with remote control and the foredeck enjoys Fusion speakers with amplifier and remote control for relaxed alfresco listening.

Luxurious interior appointments include Walnut Gloss joinery, upgraded upholstery and soft goods throughout and Roman blinds on every window, with hardwood flooring carried to the main stairs, salon and lower salon for a seamless, refined feel. The galley is comprehensively equipped for serious provisioning, offering a Thermador microwave oven, drawer dishwasher, an upgraded higher-capacity refrigerator/freezer and a 240V ceramic hob burner. Sleeping accommodation is appointed for comfort and security with an upgraded sprung mattress in the master and a Dometic safe for valuables; the forward cabin benefits from upgraded blinds and enhanced finishes. Both the master head and the day head feature upgraded fittings and finishes, extractor fans and an air-conditioning outlet to the day head for added comfort.

On deck, teak overlays the cockpit and bathing platform, and the beach club incorporates a drop-down workstation with grill and integrated LED lighting for effortless entertaining. Seating is versatile with fold-down transom seats and a

foredeck sunpad with adjustable backrests beneath a hardtop that includes a retractable opening roof and is protected aft by an electric stern canopy. Access between cockpit and salon is seamless via a folding glazed cockpit door with a fold-up glazed panel, and a folding teak cockpit table facilitates alfresco dining. Ground tackle comprises an anchor windlass, a 20 kg galvanized anchor and 30 m of 9.5 mm chain.

Practical mooring and tender-handling equipment are comprehensive: port and starboard stern docking winches, additional stern mooring spring cleats, a pair of retractable cleats for the tender on the port and starboard platform corners, and a tender recovery roller system with electric winch and controls. Boarding and safety features include a folding stainless steel bathing ladder concealed under a GRP lid, stainless steel handrails from platform to cockpit and from cockpit to side decks, stainless steel handrails on the hardtop sides along the side decks, a carbon fiber ensign staff with a thirty-two millimeter tube and an AFI dual trumpet horn.

For protection while at rest, the yacht is supplied with a comprehensive covers package comprising a cockpit cover, foredeck cover, helm cover and windscreen cover.

Disclaimer

While we provide the specifications and descriptions of this yacht in good faith, we do not guarantee the completeness or accuracy of the information nor do we warrant the condition of any vessel offered for sale. All listings may be subject to prior sale, changes in price, or withdrawal from the market without notice, and are supplied as a convenience to clients rather than a definitive representation of a particular yacht. Photographs may be illustrative or representative and not necessarily of the exact vessel; differences in features, available options, color, condition, and recorded engine hours can occur between imagery and the actual yacht. For definitive information—including

confirmation whether the images correspond to the specific boat listed—please consult the accompanying description or contact us directly, and we strongly recommend that prospective purchasers request additional photographs of the actual vessel before completing any purchase.

Construction

The hull and deck are exquisitely moulded in GRP and dressed with a premium gel coat finish, further protected by a vinylester skin coat to ensure long-term resistance and surface integrity. Structural rigidity is delivered by an extensive network of longitudinal stringers and girders, reinforced by transverse bulkheads and floors that together provide enduring strength, stiffness and stability.

Deck

The deck is finished with a moulded, non-slip surface extending across the fore and side sections, marrying safety with refined aesthetics. Every fitting is fashioned in stainless steel and is set off by substantial pulpit and cockpit rails that offer both security and sculpted form. Robust stainless-steel fendering, fitted with a protective rubber insert, shields the hull sides, while eight stainless-steel cleats provide dependable, flexible mooring points. IMCO navigation lights ensure unmistakable visibility, and dedicated fuel and freshwater fillers grant straightforward, convenient service access.

Fore deck

Forward, the foredeck is furnished with a U-shaped seating and lounging arrangement that forms a welcoming social retreat, while an electric anchor winch and capstan, controllable from either deck or cockpit stations, ensure

smooth, effortless operation. A robust stainless-steel bow roller fitted with an anchor stop governs the ground tackle with assurance, paired with an anchor secured on 30 meters of galvanized chain. Stowage remains neat and dependable within the chain locker, which incorporates dedicated fender storage and an integrated tie bar.

Aft cockpit

The aft cockpit is appointed with a teak sole and matching steps that transition seamlessly to a fixed teak bathing platform with corresponding steps, while stern safety gates to port and starboard frame the area for assured security. A gracious dinette envelops a teak folding table, and above the garage volume a generous sunbathing area with a folding backrest transforms into extended lounging. Functionality is discreetly considered with a garage opening door at the stern and a subtly integrated engine access hatch. Ambience and entertainment are provided by two cockpit speakers and layered lighting, combining overhead LEDs with complementary low level LED illumination. Reboarding and rinse off are effortless via the foldaway swimming ladder on the platform and the hot and cold swimming shower, and an ensign staff with socket completes the refined nautical detail.

Helm console

A plush bench helm seat, paired with port-side observation seating, positions captain and companion at the center of a thoughtfully appointed console where every control is within reach. Direction is commanded by a leather-wrapped, chrome-accented steering wheel and twin-lever engine controls, while a comprehensive engine instrumentation suite provides precise readouts alongside dedicated fuel and water monitoring. Navigation and communication are ensured by a VHF radio, a combined speed and depth

sounder display and a magnetic compass, and visibility is preserved by two windscreen wipers complete with washers. Trim tab controls allow fine tuning of performance, a horn is on hand when required, and a twelve-volt USB outlet plus a cigar lighter socket keep devices powered. Practical refinements include secure holders for glassware and a readily accessible fire extinguisher for added peace of mind.

Main deck salon

The main deck salon opens to a port-side seating group arranged around a dinette table, with generous stowage beneath the seats to keep the space impeccably organized. Panoramic side windows bathe the interior in daylight while overhead LED lights establish a refined evening atmosphere. An opening hardtop roof above the helm and observation seating invites fresh air and sunshine into the cabin, and aft a stern door together with a full fold-up glass panel forges a seamless transition to the cockpit. Entertainment is provided by a radio/CD system with speakers serving both salon and cockpit, and a dedicated drinks and storage cupboard—prepared for optional appliances—offers discreet functionality. A selection of interior finishes and veneers allows personalised styling, while practical comforts such as two double AC sockets, fitted carpet and scatter cushions complete the elegant, liveable environment.

Galley

Elegantly appointed for seamless life at sea, the galley is fitted with an electric refrigerator and freezer, a twin electric hob and a microwave, all supplied with hot and cold running water for effortless meal preparation. Generous cupboard storage and drawers discreetly accommodate a six-place crockery set and a matching cutlery set, while a stylish bar unit with optional stools

creates a relaxed space for informal entertaining. Natural light and fresh air are drawn through an opening porthole equipped with a mosquito screen and blind, and a double AC socket offers handy power access. Practical safety provisions include a hand-held fire extinguisher, a fire blanket and a first aid kit, and a dedicated rubbish bin keeps housekeeping simple and tidy.

Lower salon

The lower salon is crafted for effortless relaxation, featuring a comfortable seating group and a dinette table set upon fitted carpet that gently cushions each footfall. Discreet stowage beneath the seats preserves an uncluttered ambiance, while an opening porthole within a panoramic window welcomes cooling sea breezes and abundant natural light, fitted with a mosquito screen and blind for added comfort and privacy. Overhead LED lights cast a warm, efficient glow throughout the space, and a double AC socket is provided to power your essential devices.

Master aft stateroom

At the heart of the master aft stateroom sits a generous double bed, accompanied by ample storage lockers and a hanging wardrobe to ensure effortless organization of personal effects. Sweeping panoramic windows incorporate opening portholes fitted with mosquito screens and blinds, inviting fresh sea air while safeguarding privacy and comfort. A private door grants direct access to the ensuite toilet and shower, enhancing convenience and seclusion. Lighting is elegantly layered with overhead LED illumination and individual bedside reading lamps, and practical needs are covered by two double AC sockets. The space is completed by a fitted carpet underfoot, offering a soft, refined finish.

Master en suite toilet compartment

The master en suite has been exquisitely finished, featuring a washbasin with hot and cold mixer taps positioned beneath a mirrored vanity unit to facilitate effortless grooming; practical appointments include a toothbrush glass holder, integrated soap dish and a polished towel ring, while a generous stowage cupboard keeps toiletries and linens neatly arranged. Comfort and modern convenience are assured by an electric toilet and a separate shower compartment for added privacy, with overhead LED lighting creating a calm, well-lit environment. An opening porthole fitted with a mosquito screen and blind allows fresh air without compromising discretion, and a single AC socket is thoughtfully located for everyday electrical needs.

Twin forward cabin

Forward, a pair of single V-berths swivel together to form a generous double berth, while storage beneath the berths keeps linens and essentials neatly tucked away. A full-height hanging wardrobe and a separate storage cupboard provide ample capacity for longer passages, and a deck hatch together with a skylight flood the cabin with daylight and welcome fresh sea air. The panoramic windows include opening portholes, each equipped with mosquito screens and blinds to ensure comfort and privacy. As dusk falls, discreet overhead LED lighting combines with bedside reading lamps to create the ideal atmosphere, and a fitted carpet supplies warm underfoot comfort, with the convenience of two double AC sockets close at hand.

Engine compartment and ancillaries

Thoughtfully designed to deliver hushed, dependable performance, the engine room is fully soundproofed and centres on a GRP fuel tank equipped with

electric sender units for accurate fuel level indication. Engines and generator are protected by dedicated fuel filters and water separators, while 24v automatic bilge and flood pumps with high-level alarms provide vigilant, automatic dewatering. Generator exhaust silencers and their water separators ensure quiet, clean operation, and engine exhaust dry risers with water injection expertly control temperature and flow. All raw water inlets are fitted with strainers, steering response is assured by power steering, and trim control is managed through a 24v hydraulic trim tabs unit. Safety is further enhanced by air intakes fitted with automatically operated emergency shutdown flaps and 24v air extraction fans equipped with butterfly shutdown dampers, and an exhaust gas temperature sensor continuously monitors critical performance parameters.

Electrical system

Designed to deliver dependable performance and hushed operation, the yacht is equipped with a generator fitted with an underwater silent exhaust to ensure discreet running when at anchor. Dockside power is supplied via an AC shore connection and protected by a galvanic isolator, while a resilient 24 V DC electrical network, fully protected by circuit breakers, supports all onboard systems. Electrical reserves consist of four engine starter batteries and four domestic service batteries, managed through an alternator split charging arrangement and an onboard battery charger for effortless replenishment when connected to shore power. Battery isolation is made simple and secure with switches operated from a cockpit locker, and everyday comfort is assured by a water heater and AC sockets placed throughout the vessel.

Underwater gear

Below the waterline a direct shaft drive runs through purpose formed tunnels

to five blade nickel aluminium bronze propellers, each mounted on robust stainless steel propeller shafts and supported by bronze P brackets, while dripless shaft logs ensure a clean and utterly reliable operation.

High performance bronze rudders and carefully engineered struts provide assured, responsive handling, and seawater strainers — two serving the main engines and a separate unit dedicated to the generator — offer steadfast protection against debris. All underwater fittings are protected by seacocks, and a comprehensive cathodic bonding system, connected to aluminium anodes, safeguards the entire underwater assembly's structural and electrical integrity.

Systems

At the heart of the guest conveniences lies a 24v electric toilet system complete with an integral macerator, with each head capable of discharging directly overboard or routing to the onboard black water tank; that black water tank in turn offers the flexibility to pump ashore or outboard as operational needs dictate. Fresh water volumes are continually monitored by an electric sending unit, while fuel is carried in a GRP tank equipped with electric sender units to provide accurate level information. Daily comforts are sustained by a robust 24v water pressure system and a hot water cylinder fitted with a 240v immersion element, augmented by engine-sourced heating for rapid recovery. Grey water from washbasins, showers and the air conditioning condensate is collected into a sump box that automatically discharges overboard under 24v power, and vessel safety is reinforced by a comprehensive 24v bilge pumping arrangement. Fire protection is provided by a combined manual and automatic extinguishing system designed to cut fuel and ventilation by shutting down engines, generators and fans in the event of activation. When underway, 24v hydraulic trim tabs fine-tune the running attitude for a composed, confident passage.

CONTACTS

Shestakov Yacht Sales is a brokerage company specializing in the sale and service of yachts worldwide. The company offers services for buying and selling both new and used motor yachts, sailing vessels, and luxury superyachts. They also provide yacht registration, insurance, technical maintenance, crew selection, and charter organization services across the U.S., Canada, Latin America, the Caribbean, and the Bahamas.

The founder and lead broker of the company is Andrey Shestakov, a licensed and certified expert with extensive experience in marine engineering and shipbuilding.

The company has an extensive network of partnerships with major yacht manufacturers worldwide and provides services in multiple languages, including Russian, Ukrainian, Spanish, and English. The office is in Dania Beach, Florida, USA.

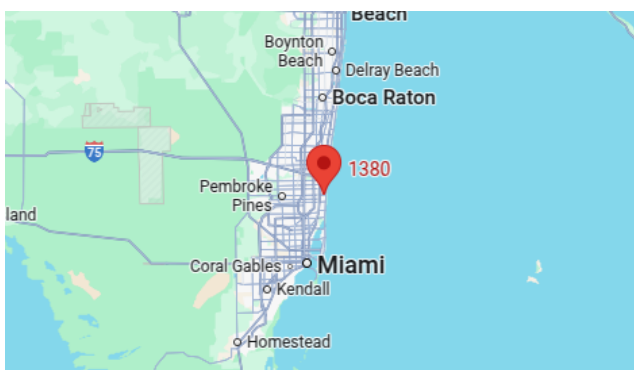
For more information and to view available yachts, you can visit the company's official website: <https://shestakovyachtsales.com>

Contact details

Phone: +1(954)274-4435

Email: andrey@shestakovyachtsales.com

Address



1380 Weeping Willow Way, Hollywood,
Florida 33019