

QUICK DECISION - PRINCESS



Builder: [PRINCESS](#)

Beam: 13' 0" (4.12 m)

Year Built: 2020

Max Draft: 12' 4" (3.75 m)

Model: N/A

Price: \$1,145,000 USD Subject to change.

[See full listing on our website](#)

Location: Boca Raton, United States

LOA: 50' 0" (15.24 m)

TABLE OF CONTENTS

OVERVIEW	3
SPECIFICATIONS	4
Basic Information	4
Dimensions	4
Speed, Capacities and Weight	4
Accommodations	4
Hull and Deck Information	5
Engine Information	5
GALLERY	6
DETAILED DESCRIPTION	13
CONTACTS	19

OVERVIEW

Quick Decision stands as the sole 2020 Princess V50 on the U.S. market, presented as a fully turnkey, meticulously maintained sport yacht whose ownership has followed a no expense spared care program since acquisition. A polished express cruiser and high performance motor yacht, she combines graceful lines and refined comfort with confident, assured handling and exceptional upkeep.

Built to U.S. specification, she is fitted with Dockmate wireless docking control and joystick maneuvering for intuitive close quarters handling. Recent mechanical attention and cosmetic readiness include engines and generator recently serviced, plus fresh bottom paint protected with PropSpeed, ensuring she is primed for immediate use while retaining premier performance and reliability.

Yacht categories: sport yacht, express cruiser, motor yacht, performance cruiser, luxury yacht

SPECIFICATIONS

Basic Information

Category:
Motor yachts

Year Built:
2020

Sub category:
Cruisers

Country:
United States

Model Year:
2020

Dimensions

LOA:
50' 0" (15.24 m)

Max Draft:
12' 4" (3.75 m)

Beam:
13' 0" (4.12 m)

Speed, Capacities and Weight

Water Capacity:
90 Gallons

Fuel Capacity:
291 Gallons

Accommodations

Total Heads:
2

Hull and Deck Information

Hull Material:

Fiberglass and Plastic Yachts

Hull Designer:

N/A

Deck Material:

Fiberglass

Interior Designer:

N/A

Hull Configuration:

N/A

Engine Information

Engines:

2

Engine Type:

Inboard

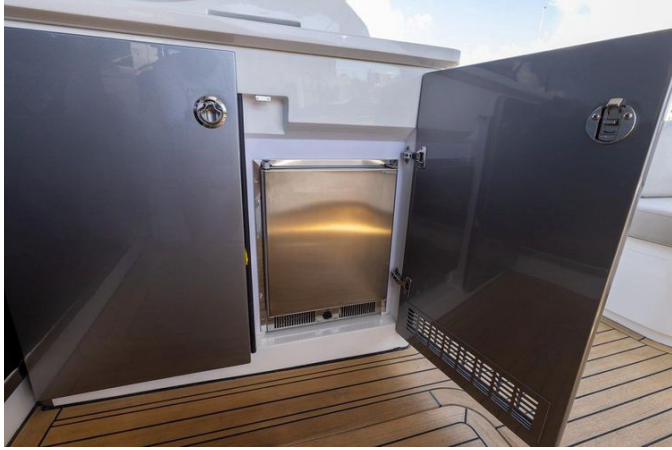
Manufacturer:

Volvo

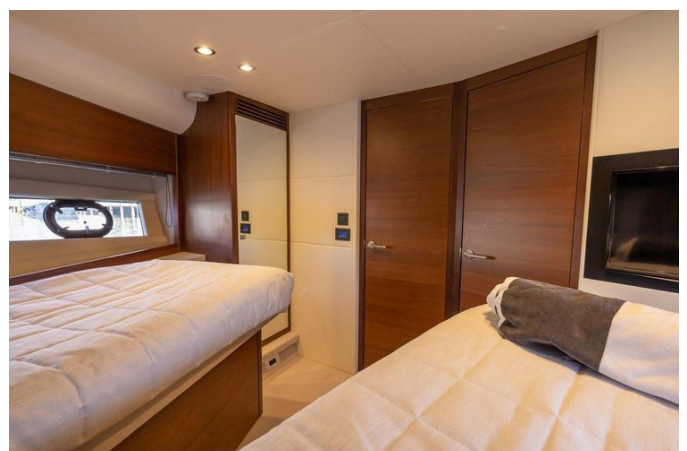
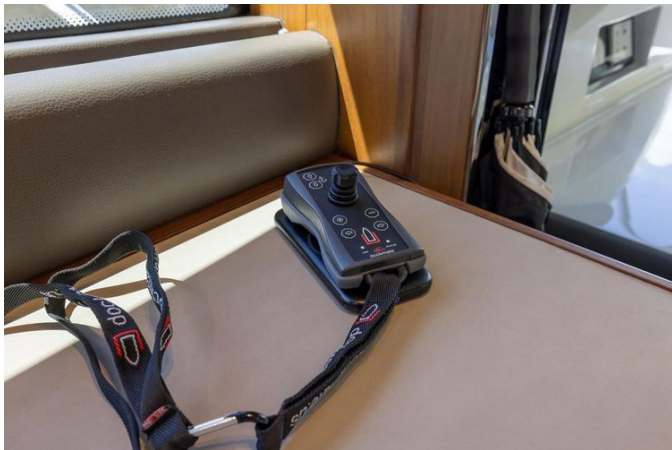
Fuel Type:

Diesel

GALLERY















DETAILED DESCRIPTION

Swim platform

A hydraulic teak swim platform lowers to meet the sea with effortless grace, serving as your private water-level terrace, while to port a convenient shower stands beside the power cord and cable master for orderly lines ashore; Euro-transom access opens directly onto both the port and starboard side decks to allow seamless movement fore and aft, generous storage access keeps watersports gear neatly stowed, and a starboard-side shower handle completes this practical, beautifully finished waterside hub designed for both ease and elegance.

Cockpit

Sheltered beneath a cockpit sun awning supported by telescopic stainless-steel struts, the U-shaped seating with tailored covers embraces guests around a custom teak table with its own protective cover, while at hand are emergency bilge pump controls and engine shut-down for peace of mind; abundant under-seat storage and dedicated cockpit lighting set the scene for evening gatherings, and entertaining is effortless at the wet bar where an icemaker, electric BBQ, sink and neat storage sit over handsome teak decking enhanced with the upgraded Teak Step Mosing detail. A flush engine room access hatch simplifies service, upgraded JL Audio speakers with a booster amp lift the soundtrack, and a custom boarding ladder mounts securely to either port or starboard to welcome guests aboard with timeless style.

Salon

Satin-finished walnut cabinetry and solid walnut flooring set a refined tone in

the salon where a large U-shaped settee faces a forty-inch flat-screen TV that rises on an electric lift, and entertainment is immersive courtesy of Harman Kardon AM/FM stereo together with a Harman Kardon 2.1 Blu-ray system paired to KEF speakers; reverse-cycle marine A/C maintains perfect climate beneath a large full-beam sun-roof with blinds, daylight floods through sliding glass entry doors treated with V Kool ceramic film across all salon glass, dimmer switches tailor the overhead lighting by night, and an electrically powered hi/lo convertible table with triple positions adapts from coffee to dining, complemented by a convenient helm station, discreet mini blinds, a credenza with bottle and glass storage and a built-in refrigerator to keep refreshments at the ready.

Helm & electronics

The helm offers two leather helm seats and commanding sightlines, with electric opening side windows to port and starboard and tilt steering for ergonomic control, while precision docking is delivered via Volvo DPS with Skyhook and intuitive joystick controls, complemented by a Volvo binnacle, bow thruster and trim tab controls, windlass and spotlight controls and a clear Volvo digital engine display. Navigation and communication are state-of-the-art with a Garmin 8616 XSV color GPS plotter/radar paired to a Garmin four kilowatt open array radar HD painted to match the domes and hardtop, Garmin GMI20 autopilot, Garmin digital depth and a Garmin VHF300 handset radio. Entertainment and connectivity are equally robust with SAT TV whose domes are painted to match the hardtop, a Sirius radio, a traditional compass and a high-gain wifi booster—Wave Wifi Rogue Pro DB—to keep you connected offshore.

Galley

Designed for culinary ease, the galley features elegant Vonite countertops in Grey Horizon above a large stainless-steel sink with a garbage disposal to make clean-up swift, while a three-burner cooktop pairs with a combo microwave/convection oven and a full-size refrigerator with a separate freezer plus organized storage drawers to keep provisions shipshape; thoughtful appointments include large opening portlights, mini blinds, a 110 volt GFCI receptacle, a quiet vent fan, durable hardwood flooring and abundant storage, and entertaining is elevated with Princess cutlery for a six-place setting, Princess china for six and Princess glassware comprising six wine glasses and six tumblers.

Dinette area

The lower dinette converts effortlessly via a telescopic leg table with an in-fill cushion to create a comfortable berth when required, while natural light pours through two large opening portlights onto satin-finished walnut cabinetry, with upper storage cabinets, discreet mini blinds and carpet covers preserving the space with yacht-like neatness; entertainment arrives via a thirty-two inch LED TV with DVD player, storage beneath the dinette seats swallows extra gear and dimmer switches tailor the overhead lighting to any mood, and a central vacuum keeps every surface immaculate between passages.

Guest head

Conveniently accessible from both the guest stateroom and the salon, the guest head features a large separate shower and a chic vanity with storage beneath Carrara white countertops over Koko White flooring, a vessel-style vanity sink paired with a mirrored medicine cabinet for tidy organization, and

practical appointments including a 110 volt GFCI outlet, a quiet vent fan and two towel bars, creating an elegant, bright and intelligently arranged private retreat for guests.

VIP stateroom

A versatile scissor berth converts from a full-size berth into two comfortable singles to suit any itinerary and is dressed with a curated pillow package, while entertainment comes via a twenty eight inch LED TV with DVD player and a Fusion stereo AM/FM/CD; four storage drawers and a large hanging locker keep personal items organized, an overhead deck hatch and two opening portlights invite fresh air and natural light, a privacy door ensures serenity, and satin-finished walnut cabinetry with discreet mini blinds plus an en-suite head complete this well-appointed guest sanctuary.

Master head

Thoughtfully appointed for everyday luxury, the master head offers a large separate shower and a refined vanity with storage beneath Carrara white countertops over Koko White flooring, a vessel-style sink paired with a 110 volt GFCI outlet for grooming essentials, a marine toilet, privacy door and efficient vent fan to ensure comfort and discretion, and a mirrored medicine cabinet plus two extra towel bars complete this bright, spa-like space.

Master stateroom

The master stateroom centers on a queen berth with generous storage beneath, complemented by drawers, storage lockers and a graceful love seat for quiet moments at sea; entertainment is at hand with a thirty-two inch LED TV with DVD player and a Fusion stereo, large side windows with mini blinds

frame the view, climate is precisely managed with air conditioning and heat, bedside side tables and a credenza with drawers provide considered convenience, and satin-finished walnut cabinetry together with a privacy door underscore the serene, sophisticated ambiance.

Electrical system

The yacht is equipped with a US electrical system rated at 120/240 volts, 60 Hz, supported by a robust 24 volt DC system, and shore services are streamlined by a Glendenning cable master and a fifty amp shore power cord feeding a voltage stabilizer transformer with US outlets distributed throughout; a comprehensive distribution panel, a proven bonding system and dedicated batteries underpin safe, reliable onboard power.

Engine room

Cleanly laid out for access and service, the engine room is ventilated by dedicated blowers and houses twin Volvo diesels IPS600 delivering 435 HP each, while ship's power comes from a Cummins generator rated at 13.5 kW with 596 hours; three automatic/manual bilge pumps and an automatic/manual fire extinguisher system stand ready for safety, freshwater cooled engines, an overhead storage compartment, air conditioner compressors and a freshwater filter reflect sound engineering, and three Separ fuel filters together with a convenient oil exchanger system simplify fast, tidy maintenance.

Disclaimer

The details of this vessel are offered in good faith but cannot be guaranteed or warranted for accuracy nor is the condition of the vessel warranted; a buyer

should instruct their agents or surveyors to investigate any details the buyer wishes to have validated, and this vessel is offered subject to prior sale, price change or withdrawal without notice.

CONTACTS

Shestakov Yacht Sales is a brokerage company specializing in the sale and service of yachts worldwide. The company offers services for buying and selling both new and used motor yachts, sailing vessels, and luxury superyachts. They also provide yacht registration, insurance, technical maintenance, crew selection, and charter organization services across the U.S., Canada, Latin America, the Caribbean, and the Bahamas.

The founder and lead broker of the company is Andrey Shestakov, a licensed and certified expert with extensive experience in marine engineering and shipbuilding.

The company has an extensive network of partnerships with major yacht manufacturers worldwide and provides services in multiple languages, including Russian, Ukrainian, Spanish, and English. The office is in Dania Beach, Florida, USA.

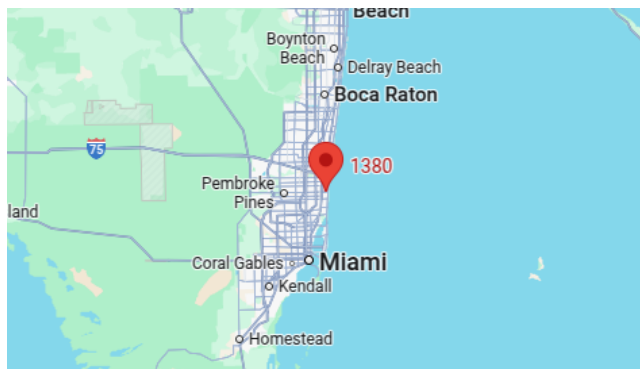
For more information and to view available yachts, you can visit the company's official website: <https://shestakovyachtsales.com>

Contact details

Phone: +1(954)274-4435

Email: andrey@shestakovyachtsales.com

Address



1380 Weeping Willow Way, Hollywood,
Florida 33019