



SHESTAKOV

Yacht Sales

SANDY - VIKING



Builder: [VIKING](#)

Beam: 17' 0" (5.18 m)

Year Built: 2012

Model: 50 Convertible

Price: \$1,325,000 USD Subject to change.

[See full listing on our website](#)

Location: Ponce, United States

LOA: 50' 0" (15.24 m)

If you would like to buy a yacht **SANDY - VIKING** or would like help answering any questions concerning purchasing, selling, or chartering a yacht, please call **+1(954)274-4435** or click here on <https://shestakovyachtsales.com>

TABLE OF CONTENTS

OVERVIEW 3

SPECIFICATIONS 4

 Basic Information 4

 Dimensions 4

 Speed, Capacities and Weight 4

 Hull and Deck Information 4

 Engine Information 5

GALLERY 6

DETAILED DESCRIPTION 17

CONTACTS 21

OVERVIEW

Meticulously cared for with a no expense spared philosophy, this convertible sportfish motor yacht is driven by MAN V12 1360 CRM powerplants showing approximately 1,345 hours, with the 1,000 hour service completed in 2020. The helm has been modernized with two Garmin 8616 GPS displays (2025), a new VHF (2025) and a night vision camera, while eight underwater lights installed in 2023 create a dramatic evening ambiance. Recent enhancements include a Palm Beach Towers swim ladder, a 2023 upgraded stereo system with amplifier and six speakers, a custom one piece bridge enclosure that can be configured as a three side setup, new forward stateroom air conditioning (2025), a sleek custom black mask installed in 2023, and a convertible aft bridge backdrop/canopy—together delivering a refined, turnkey platform equally suited to luxurious cruising and serious sportfishing.

SPECIFICATIONS

Basic Information

Model Year:
2012

Country:
United States

Year Built:
2012

Dimensions

LOA:
50' 0" (15.24 m)

Beam:
17' 0" (5.18 m)

Speed, Capacities and Weight

Water Capacity:
175 Gallons

Fuel Capacity:
1200 Gallons

Hull and Deck Information

Hull Material:
Fiberglass and Plastic Yachts

Hull Designer:
N/A

Deck Material:
Fiberglass

Interior Designer:
N/A

Hull Configuration:
N/A

Engine Information

Engines:

2

Engine Type:

Inboard

Manufacturer:

MAN

Fuel Type:

Diesel

GALLERY











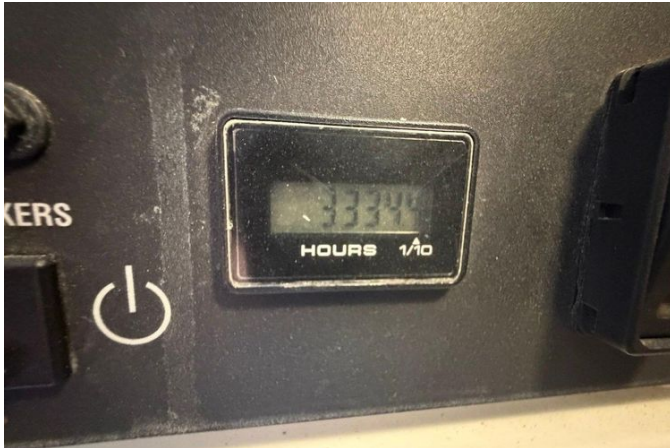












DETAILED DESCRIPTION

Dimensions

Measuring 50 feet 8 inches on the hull and extending to 54 feet 8 inches when the bow pulpit is included, this convertible presents a broad 17-foot beam and a 4-foot 10-inch draft. Displacement is approximately 66,500 pounds with a 15-degree deadrise, and systems are sized for serious voyaging with an optional 1,200-gallon fuel capacity, 175 gallons of fresh water and a 54-gallon holding tank.

Accommodations

Configured to satisfy both long-range cruising and competitive angling, the interior comprises three staterooms and two heads, an expansive salon and a galley-up arrangement that facilitates service and socializing, while a cockpit engineered for tournament performance ensures the boat excels when it counts.

Salon

The salon is appointed with a teak dinette table mounted on a matching pedestal and an ultra-leather L-shaped sofa to port with plentiful storage beneath, all set against a lustrous high-gloss teak veneer and tailored fabric window treatments with Silhouette blinds. Climate comfort is provided by air conditioning with reverse-cycle heat, and Amtico flooring at the salon entry flows forward into the galley with a solid teak trim separating carpet from hard surface for an elegant transition. A curved credenza to starboard and a teak end table complete the furnishings, and access is effortless via an electric salon door. Entertainment is centered around a 42-inch flat-screen TV, a

dedicated entertainment center and a stereo system with speakers, while a high/low teak cocktail table offers both form and function.

Galley

Designed for both culinary efficiency and conviviality, the galley features Amtico flooring beneath an L-shaped quartz countertop complemented by an island counter with bar stools and subtle indirect lighting. Provisions are kept chilled by Sub-Zero under-counter refrigeration, and meal preparation is handled by a combination microwave/convection oven and a three-burner electric stove, with plentiful storage in upper cabinets. A teak backsplash replaces the traditional mirror for a refined aesthetic, and a teak dinette table opposite the galley sits beneath a 42-inch flat-screen TV; a garbage disposal adds practical convenience.

Master stateroom

The master stateroom is crafted as a tranquil sanctuary with a custom headboard, bespoke wall coverings and teak nightstands, accompanied by a starboard credenza and four drawers at the entrance. Storage is thoughtfully executed with a maple-lined hanging locker, drawers under the berth and lift-up storage beneath the mattress. Comfort is maintained by air conditioning with reverse-cycle heat, and onboard entertainment is provided by a 22-inch flat-screen TV and an integrated entertainment center/stereo.

Heads

The master head is equipped with a Vacu-Flush fresh-water electric toilet offering overboard, recirculating and holding-tank options, paired with Grohe sink and shower fittings, an exhaust fan and a fiberglass shower. Finishes

include Amtico flooring, a curved teak vanity cabinet beneath an undermount sink, custom wall coverings, Corian vanity countertops and a vanity cabinet with mirrored backing. The guest head mirrors this specification, featuring Vacu-Flush fresh-water electric heads with overboard, recirculating and holding-tank functionality, Grohe hardware, an exhaust fan, Amtico flooring, an undermount sink and fiberglass shower, complemented by custom wall covering, Corian counters and a teak curved vanity with a mirrored cabinet.

Guest stateroom forward

Arranged for versatility and comfort, the forward guest stateroom offers upper and lower berths to port, a teak-faced forward bulkhead and custom wall coverings. Practical storage is provided beneath the lower bunk along with a hanging locker to starboard, while a stereo system with speakers and air conditioning with reverse-cycle heat ensure both entertainment and climate comfort.

Guest stateroom port

The portside guest stateroom presents comfortable bunk beds, a hanging locker aft and a drawer beneath the lower berth for efficient stowage. The cabin is served by a stereo system with speakers and air conditioning with reverse-cycle heat to maintain comfort in any season.

Flybridge

The flybridge places the captain under a molded fiberglass hardtop with integrated lighting and is anchored by an L-shaped seating area forward of the helm with storage below, a starboard bench with concealed storage, and a jump seat with backrest and additional storage. The helm area features a

fiberglass helm pod with a polished stainless-steel wheel, single-lever electronic controls incorporating bow thruster operation, recessed electronics boxes and two radio boxes at the console, while MAN digital displays are set beneath a hatch cover. Practical appointments include an insulated drink box, a centerpiece enclosure, storage forward in the brow cabinet, a compass for quick reference and Release custom teak helm chairs, with a flybridge stereo and speakers completing the onboard experience.

Electronics

The helm is equipped with two Garmin 1643 GPS units installed in 2025 alongside Garmin radar and a Garmin depth sounder, supported by two Icom M604 VHF radios added in 2025 and a FLIR camera installed in 2025 to enhance situational awareness. Additional systems include an ACR spotlight, a JL stereo, a KVH antenna for entertainment and communications, a Simrad AP24 autopilot for precise tracking and a Furuno RD430 for reliable data presentation.

Additional equipment

Built to fish hard and cruise far, the vessel includes an Eskimo ice machine dedicated to the starboard fishbox, a Sea Ro watermaker for offshore self-sufficiency, electric teaser reels Epoch US 8, Rupp outriggers and eight underwater lights that enhance presence and allure after dusk.

CONTACTS

Shestakov Yacht Sales is a brokerage company specializing in the sale and service of yachts worldwide. The company offers services for buying and selling both new and used motor yachts, sailing vessels, and luxury superyachts. They also provide yacht registration, insurance, technical maintenance, crew selection, and charter organization services across the U.S., Canada, Latin America, the Caribbean, and the Bahamas.

The founder and lead broker of the company is Andrey Shestakov, a licensed and certified expert with extensive experience in marine engineering and shipbuilding.

The company has an extensive network of partnerships with major yacht manufacturers worldwide and provides services in multiple languages, including Russian, Ukrainian, Spanish, and English. The office is in Dania Beach, Florida, USA.

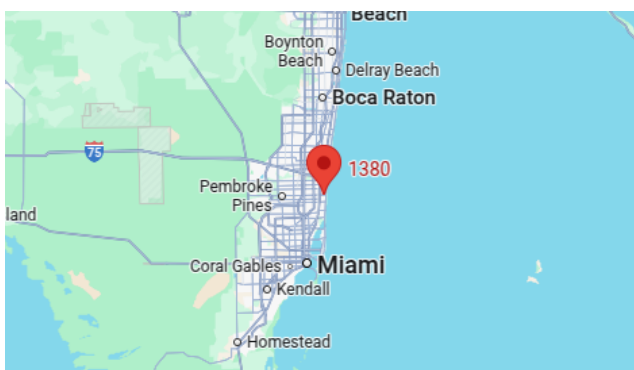
For more information and to view available yachts, you can visit the company's official website: <https://shestakovyachtsales.com>

Contact details

Phone: +1(954)274-4435

Email: andrey@shestakovyachtsales.com

Address



1380 Weeping Willow Way, Hollywood,
Florida 33019