

# ABSOLUTE NAVETTA 52 - ABSOLUTE YACHTS



**Builder:** [Absolute Yachts](#)

**LOA:** 52' 0" (15.90 m)

**Year Built:** 2024

**Beam:** 15' 0" (4.65 m)

**Model:** Navetta 52

**Min Draft:** 3' 9" (1.15 m)

**Price:** \$1,561,831.16 USD Subject to change.

**Max Draft:** 4' 1" (1.24 m)

[See full listing on our website](#)

**Location:** Marmaris, Turkey

**Cruising Speed:** 20 Knots (23.02 MPH)

**Max Speed:** 23 Knots (26.47 MPH)

---

# TABLE OF CONTENTS

---

<b>OVERVIEW .....</b>	<b>3</b>
<b>SPECIFICATIONS .....</b>	<b>4</b>
Basic Information .....	4
Dimensions .....	4
Speed, Capacities and Weight .....	4
Accommodations .....	5
Hull and Deck Information .....	5
Engine Information .....	5
<b>GALLERY .....</b>	<b>6</b>
<b>DETAILED DESCRIPTION .....</b>	<b>13</b>
<b>CONTACTS .....</b>	<b>16</b>

## OVERVIEW

---

This Absolute Navetta 52 has enjoyed exceptionally light use since new: the generator records just 31 hours and the main engines only 37 hours.

Maintained by the authorized dealer from day one and cared for by a full-time skipper, she remains essentially in her original, as-delivered condition. Offers are welcomed.

A graceful synthesis of Italian elegance and economical operation, the Navetta 52 redefines the compact superyacht segment by offering interior volume more commonly found on larger motor yachts. Cleverly arranged with three cabins, a spacious flybridge and sweeping panoramic glazing that floods the saloon with daylight, she combines thoughtful layout and bright, airy living spaces. Propelled by reliable Volvo Penta IPS pod drives, she delivers efficient cruising performance while preserving refined lines and confident seakeeping.

# SPECIFICATIONS

---

## Basic Information

---

**Model Year:**  
2024

**Country:**  
Turkey

**Year Built:**  
2024

## Dimensions

---

**LOA:**  
52' 0" (15.90 m)

**Beam:**  
15' 0" (4.65 m)

**Min Draft:**  
3' 9" (1.15 m)

**Max Draft:**  
4' 1" (1.24 m)

## Speed, Capacities and Weight

---

**Cruise Speed:**  
20 Knots (23.02 MPH)

**Water Capacity:**  
158.5 Gallons

**Max Speed:**  
23 Knots (26.47 MPH)

**Fuel Capacity:**  
528.34 Gallons

**Gross Tonnage:**  
31 Pounds

## Accommodations

---

**Sleeps:**

4

**Crew Berths:**

1

**Total Heads:**

2

## Hull and Deck Information

---

**Hull Material:**

Fiberglass and Plastic Yachts

**Hull Designer:**

Absolute Yachts

**Deck Material:**

Fiberglass

**Interior Designer:**

Absolute Yachts

**Hull Configuration:**

Semi-Displacement

## Engine Information

---

**Engines:**

2

**Engine Type:**

Inboard

**Manufacturer:**

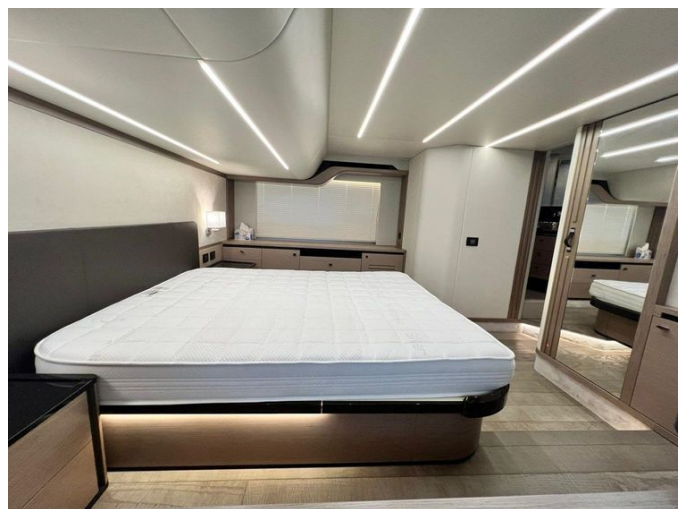
Volvo Penta

**Fuel Type:**

Diesel

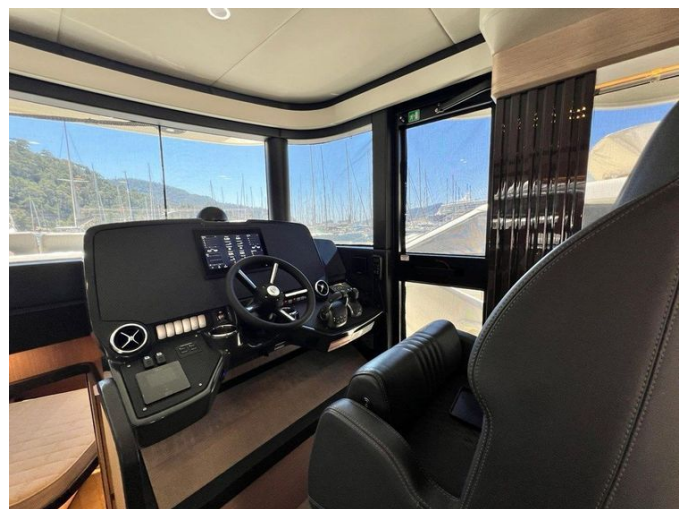
# GALLERY















---

## DETAILED DESCRIPTION

---

### Optional extra specification

---

Driven by twin Volvo Penta D6-IPS650 engines, each rated at 470 HP, this yacht is engineered for confident handling and precise control, complemented by an on/off bow thruster with dual control stations on the main deck and flybridge; a proportional bow thruster is not available. The rigid hard top is fashioned from fiberglass and conceals an electrically opening soft roof finished with a microfiber lining and integrated LED lighting to accentuate the cockpit ambience. Boarding and tender operations are effortless thanks to an electro-hydraulic retractable stainless steel gangway with teak decking and handrail, while a hydraulic swim platform with a 400 kg (882 lbs) lifting capacity, solid teak surface and ladder provides safe and convenient water access. The hull receives a black self-polishing antifouling treatment, with propellers not included, and the boat is prepared for the future installation of a Seakeeper gyroscopic stabilizer.

Climate control is assured by tropical air conditioning 50 Hz with split units throughout, with an additional dedicated split air-conditioning unit for the fourth aft cabin that supports 50/60 Hz, and a shore socket with cable is provided for convenient shore power connection. Electrical autonomy is supported by a 2,500 W inverter (230V - 50Hz) and an approximate 17.5 kW generator (230V - 50Hz) fitted with fume and water separators and a Racor pre-filter with cartridge and water separator to ensure reliable service. Practical systems include deck washing with a quay connection and a greywater tank, noting that washing machine and dishwasher wastewater connections are not included.

The flybridge wet bar is equipped for light alfresco entertaining with a BBQ with lid and an icemaker (not for food) paired with a chilled icebox, all

compatible with 50/60 Hz circuits. Exterior illumination is thoughtfully arranged with a lighting kit featuring courtesy floor-level lights on the deck and flybridge, accent lighting for the flybridge aft area and two white aft underwater lights; multi-colour RGBW underwater lighting is not available. For privacy and protection, the cockpit benefits from an electrical sunshade, pearl grey protective covers for the wet bar and flybridge sofas as well as the cockpit sofa, and flyscreens. Access to the helm is afforded by a manual opening door from the starboard walkway.

Mooring is made straightforward by two mooring winches with foot switches housed in illuminated lockers, and a chain counter is fitted to both the fly and main deck dashboards. Safety equipment includes life jackets and a liferaft. Navigation and onboard electronics comprise an AIS B Class transceiver and a radar with solid-state technology as an antenna-only option that can be fitted exclusively with the hard top, alongside a second Volvo EVC touchscreen on the flybridge dashboard which provides autopilot management. Surveillance is covered by cameras in the engine room and cockpit, with the Garmin Surround View System option excluded. Entertainment provision includes a digital terrestrial TV antenna with connection cables, satellite wiring and HDMI cables, and a power-operated TV lift mechanism for the salon.

Inside, the lower deck cabins feature sand grey-colour durmast oak flooring with a saw-cut effect in lieu of carpet, while the bathrooms are appointed with marble countertops; chrome-plated bathroom basins are available at extra cost. The bathrooms include WCs with bidet function, except in the fourth aft cabin where this feature is not fitted. The galley and salon are fitted with a dishwasher 50/60 Hz and a wine cooler 50/60 Hz, and the master cabin is fitted with a secure safe for valuables. On deck, an ecru-colour bow sundeck crafted from quick-drainage foam with reclining backrests is complemented by pearl grey cushion covers for both the sundeck and the sofa, and the cockpit is furnished with a synthetic teak table and three natural teak chairs with dedicated stowage in the engine room.

The thoughtfully designed fourth aft cabin offers a wall bed, walnut-finished furniture, a wardrobe, an opening porthole and a large window, finished with an HPL floor and provided with a separate toilette equipped with a WC and basin.

# CONTACTS

---

Shestakov Yacht Sales is a brokerage company specializing in the sale and service of yachts worldwide. The company offers services for buying and selling both new and used motor yachts, sailing vessels, and luxury superyachts. They also provide yacht registration, insurance, technical maintenance, crew selection, and charter organization services across the U.S., Canada, Latin America, the Caribbean, and the Bahamas.

The founder and lead broker of the company is Andrey Shestakov, a licensed and certified expert with extensive experience in marine engineering and shipbuilding.

The company has an extensive network of partnerships with major yacht manufacturers worldwide and provides services in multiple languages, including Russian, Ukrainian, Spanish, and English. The office is in Dania Beach, Florida, USA.

For more information and to view available yachts, you can visit the company's official website: <https://shestakovyachtsales.com>

## Contact details

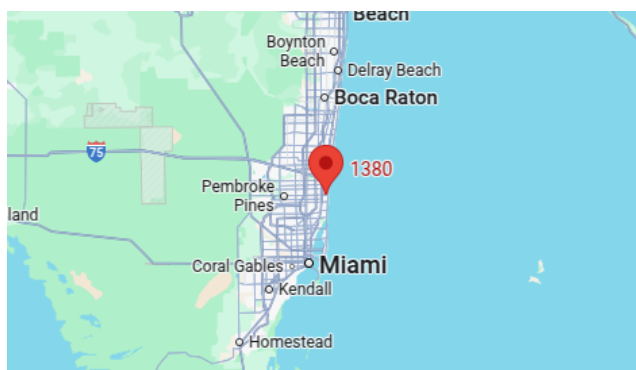
---

**Phone:** +1(954)274-4435

**Email:** [andrey@shestakovyachtsales.com](mailto:andrey@shestakovyachtsales.com)

## Address

---



1380 Weeping Willow Way, Hollywood,  
Florida 33019