



SHESTAKOV

Yacht Sales

## ISLAND GIRL - OFFSHORE YACHTS



**Builder:** [OFFSHORE YACHTS](#)

**Beam:** 15' 0" (4.83 m)

**Year Built:** 1999

**Model:** Pilothouse

**Price:** \$570,000 USD Subject to change.

[See full listing on our website](#)

**Location:** Newport Beach, United States

**LOA:** 52' 0" (15.85 m)

If you would like to buy a yacht **ISLAND GIRL - OFFSHORE YACHTS** or would like help answering any questions concerning purchasing, selling, or chartering a yacht, please call **+1(954)274-4435** or click here on <https://shestakovyachtsales.com>

---

# TABLE OF CONTENTS

---

<b>OVERVIEW .....</b>	<b>3</b>
<b>SPECIFICATIONS .....</b>	<b>4</b>
Basic Information .....	4
Dimensions .....	4
Speed, Capacities and Weight .....	4
Accommodations .....	4
Hull and Deck Information .....	5
Engine Information .....	5
<b>GALLERY .....</b>	<b>6</b>
<b>DETAILED DESCRIPTION .....</b>	<b>14</b>
<b>CONTACTS .....</b>	<b>17</b>

## OVERVIEW

---

Step aboard the elegant 1999 Offshore Yachts 52' Pilothouse and discover a vessel that pairs Offshore's celebrated construction with comfortable, capable cruising accommodations. Built on a solid fiberglass hull, she offers the robustness and seakeeping Offshore is known for, making her equally well suited to long-range bluewater passages and assured coastal passagemaking throughout the year. Power is supplied by twin Cummins 450 Diamond Series inboard diesels producing a combined 900 hp that turn bronze three-blade propellers, delivering efficient, dependable propulsion and excellent maneuverability in tight quarters. The protected pilothouse layout provides commanding, all-weather sightlines and a calm, controlled helm environment—an enduring signature of Offshore motor yacht design. Below decks the popular two-stateroom, two-head arrangement affords welcoming, private accommodations for owner and guests, thoughtfully arranged for comfort underway or at anchor. Exceptionally well balanced and purposefully laid out, this Offshore 52' Pilothouse represents a rare opportunity to own a proven cruiser built for serious range and adventure. Additional features include LLC ownership, a recent comprehensive service, new underwater exhaust, and fresh bottom paint applied in 2/2026.

# SPECIFICATIONS

---

## Basic Information

---

**Model Year:**  
1999

**Country:**  
United States

**Year Built:**  
1999

## Dimensions

---

**LOA:**  
52' 0" (15.85 m)

**Beam:**  
15' 0" (4.83 m)

## Speed, Capacities and Weight

---

**Water Capacity:**  
300 Gallons

**Fuel Capacity:**  
1000 Gallons

## Accommodations

---

**Total Heads:**  
2

## Hull and Deck Information

---

**Hull Material:**

Fiberglass and Plastic Yachts

**Hull Designer:**

William Crealock

**Deck Material:**

Fiberglass

**Interior Designer:**

N/A

**Hull Configuration:**

Semi-Displacement

## Engine Information

---

**Engines:**

2

**Engine Type:**

Inboard

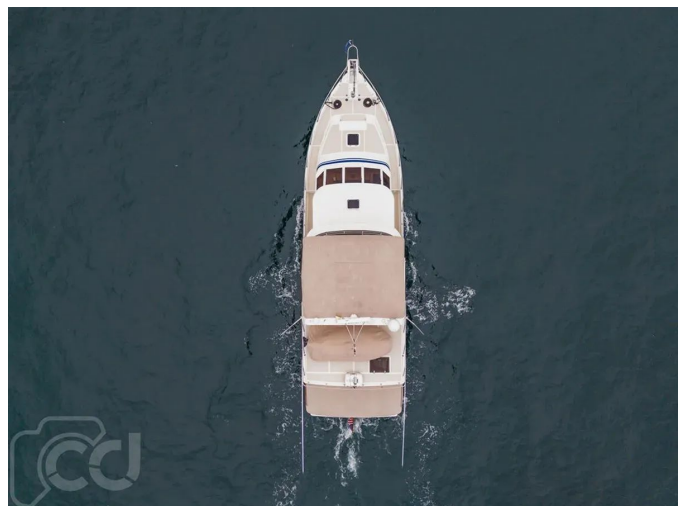
**Manufacturer:**

Cummins

**Fuel Type:**

Diesel

# GALLERY



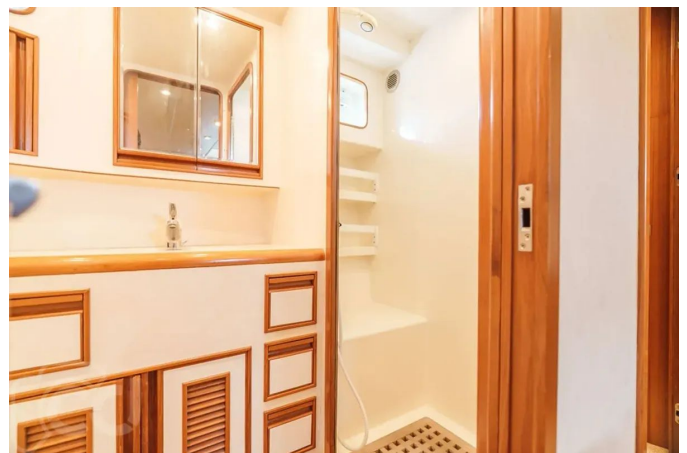


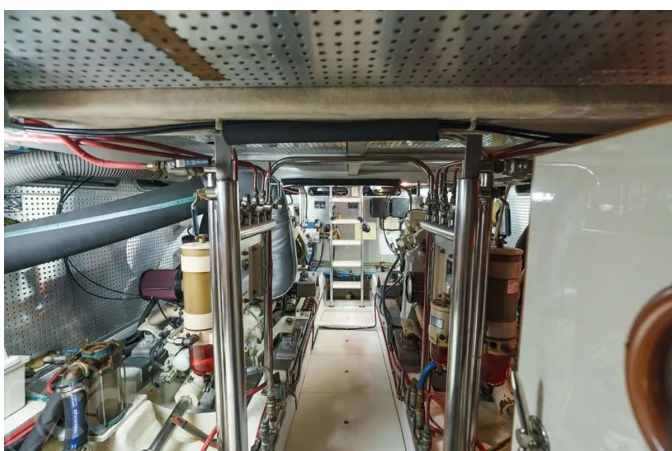












---

# DETAILED DESCRIPTION

---

## Overview

---

The salon is appointed for gracious living and entertaining, centering on a generous U-settee with storage beneath and a teak hi/lo table that serves equally well for formal dining, cocktails or converting to an extra bunk, all set beneath large opening windows that provide true sit-down visibility and dressed with elegant two-inch wood blinds. A starboard settee, also with under-seat storage, balances an aft TV cabinet while an overhead teak handrail and dimmable halogen lighting create a warm, refined atmosphere. Double aft doors unveil the expansive cockpit and a discreet stairway affords direct access to the master cabin.

On the same level, the salon galley is bathed in natural light from a large opening window and is anchored by a double basin stainless sink set in Corian with a Corian countertop and backsplash cover, complemented by a single lever faucet. Refrigeration and cooking are handled by two under-counter Sub Zero refrigerators, a Sharp microwave/convection oven and a three-burner glass cooktop, with practical slide-out storage behind the cooktop, abundant shelving with slide-out drawers and an overhead dish cabinet. Dimmable overhead halogen lighting and a teak and holly sole enhance the ambience, while an access hatch to the engine room underscores the layout's functionality.

The expansive pilothouse offers commanding 360-degree visibility and a relaxed social area with an aft L-settee and a teak hi/lo table that also converts to a bunk. Two opening windows maintain comfortable sit-down sightlines while port and starboard pilothouse doors provide effortless access to the walk-around decks. Twin Pompanette AS-21 helm seats ensure comfort at the helm, with a Sub Zero freezer and chart locker nearby. A teak and holly sole,

twin teak overhead handrails, an overhead hatch for light and ventilation, and dimmable halogen overhead lighting contribute to the space's elegance, while an aft ventilation hatch/pass-through and stairs leading to the forward cabin complete this commanding control environment.

The master cabin is luxuriously configured with a centerline walk-around queen berth accessed privately from the salon, five opening ports for generous light and ventilation, and two cedar-lined hanging lockers. Storage is thoughtful and plentiful, including four drawers beneath the berth, and the suite is appointed with a large teak-framed mirror, reverse cycle heat and air, an Insignia TV, a Toshiba Blu-Ray DVD player, two swing-arm reading lights and dimmable overhead halogen lighting. The en suite head features two opening ports, a VacuFlush head, Corian countertop with molded sink and single lever faucet, a mirrored teak-framed medicine cabinet, ample storage, a ventilation fan and a stall shower with teak grating, all finished with dimmable overhead halogen lighting and swing-out towel hooks.

Guest accommodations are equally considerate, with a large V-berth that accepts an insert to form a full bunk, two cedar-lined hanging lockers, abundant drawer and locker storage, and two swing-arm reading lights. Two opening ports and a generous overhead hatch provide plentiful light, ventilation and egress, while reverse cycle heat and air and overhead halogen lighting maintain comfort. Direct access to the forward head ensures privacy; that head includes a VacuFlush system, two opening ports, a teak and holly sole, Corian countertop with molded sink and single lever faucet, a mirrored teak-framed medicine cabinet, a large stall shower, swing-out towel hooks and dimmable overhead halogen lighting.

The full-beam flybridge is expansive and ready for both leisure and action, furnished with two Pompanette AS-21 helm seats and an L-settee with storage beneath, the storage areas ventilated with teak grates. Two teak-framed tables sit beneath a folding bimini, while a concealed sink with single lever faucet, a

1000lb Broker davit, a tender and removable stainless chocks confirm the deck's readiness for cruising and tending.

Navigation and control systems are comprehensive and logically distributed. The pilothouse is equipped with two Garmin 5212 units, a Garmin GPSmap SXV, B&G Wind, a B&G Network QUAD, a Garmin VHF, a Simrad AP autopilot, an HRO watermaker remote, Wesmar stabilizer control, a Link 10 battery monitor, a holding tank monitor, a Fireboy override and a Tank Tender monitoring fuel, water, holding and sumps, all supported by Magnum inverter control, bow thruster control, trim tab controls and full engine instrumentation. The flybridge repeats key navigation and control functionality with a Garmin GPSmap, B&G wind, a B&G network QUAD, a Simrad AP Autopilot, Wesmar stabilizer control, bow thruster and trim tab controls, and a Garmin VHF.

Decks and cockpit are laid out for serious use and refined entertaining, beginning with a generous cockpit featuring two in-deck storage lockers for fenders and lines and a large center hatch providing access to lazarette storage. An aft transom door leads to the FRB swim platform, while four custom rod holders, a hot and cold cockpit shower and a concealed sink with single lever faucet expand the area's versatility. Storage cabinets to port and starboard, an aft helm station with engine and thruster controls and an FRP and stainless ladder to the boat deck are complemented by a teak cap rail at the cockpit. Full walk-around decks with port and starboard hull-side access doors, two bow storage lockers, a Maxwell windlass with 300' of chain, a CQR anchor and outriggers complete the capable and seaworthy exterior package. Major systems and recent upgrades emphasize reliability and onboard comfort, led by twin Cummins 450hp Diamonds engine, a Northern Lights 12kw generator showing 1,431 hours, Cruisair reverse cycle heat and air conditioning, a tender, Wesmar stabilizers and bow thruster, an HRO watermaker and full engine instrumentation.

# CONTACTS

---

Shestakov Yacht Sales is a brokerage company specializing in the sale and service of yachts worldwide. The company offers services for buying and selling both new and used motor yachts, sailing vessels, and luxury superyachts. They also provide yacht registration, insurance, technical maintenance, crew selection, and charter organization services across the U.S., Canada, Latin America, the Caribbean, and the Bahamas.

The founder and lead broker of the company is Andrey Shestakov, a licensed and certified expert with extensive experience in marine engineering and shipbuilding.

The company has an extensive network of partnerships with major yacht manufacturers worldwide and provides services in multiple languages, including Russian, Ukrainian, Spanish, and English. The office is in Dania Beach, Florida, USA.

For more information and to view available yachts, you can visit the company's official website: <https://shestakovyachtsales.com>

## Contact details

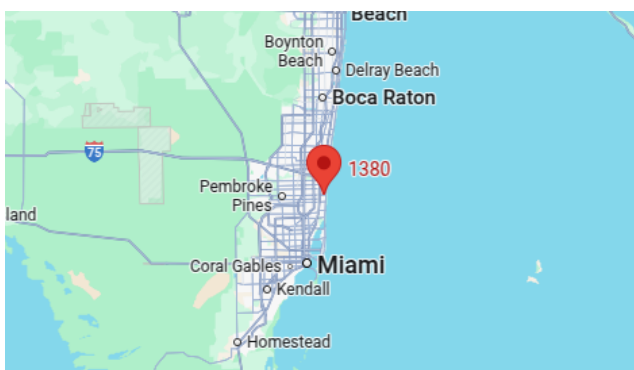
---

**Phone:** +1(954)274-4435

**Email:** [andrey@shestakovyachtsales.com](mailto:andrey@shestakovyachtsales.com)

## Address

---



1380 Weeping Willow Way, Hollywood,  
Florida 33019