



53F ILIAD - ILIAD CATAMARANS



Builder: [ILIAD Catamarans](#)

LOA: 53' 0" (16.15 m)

Year Built: 2026

Beam: 25' 0" (7.62 m)

Model: 53F

Max Draft: 13' 5" (4.08 m)

Price: - Subject to change.

Cruising Speed: 20 Knots (23.02 MPH)

[See full listing on our website](#)

Location: Dania Beach, United States

Max Speed: 24 Knots (27.62 MPH)

If you would like to buy a yacht **53F ILIAD - ILIAD CATAMARANS** or would like help answering any questions concerning purchasing, selling, or chartering a yacht, please call **+1(954)274-4435** or click here on <https://shestakovyachtsales.com>

TABLE OF CONTENTS

OVERVIEW	3
SPECIFICATIONS	4
Basic Information	4
Dimensions	4
Speed, Capacities and Weight	4
Accommodations	5
Hull and Deck Information	5
Engine Information	5
GALLERY	6
DETAILED DESCRIPTION	12
CONTACTS	17

OVERVIEW

Skip the queue and claim your 53F today; this power catamaran is already under construction with delivery slated for December 2026, presenting a quick avenue to ownership of a polished flybridge motor yacht designed for true bluewater voyaging. Renowned for generous bridgedeck clearance and an elevated freeboard, ILIAD Catamarans are engineered to offer a dry, assured ride across long passages in demanding seas. Conceived as a long-range passagemaker, she can be specified with optional engine packages and delivers an estimated range of approximately 2,500 nm.

Her design includes a hydraulic lifting stern platform and sumptuous teak finishes that underscore the vessel's tasteful appointments. On deck and at the helm you will find a comprehensive Garmin electronics suite, while the exterior galley is fitted with a Kenyon Texan electric grill and a Vitrifrigo ice maker; a watermaker further enhances autonomy. An array of luxurious touches throughout the interior and exterior elevates life aboard this elegant, expedition-ready family cruiser that balances performance, comfort, and style. For those weighing alternatives such as Sunreef, Leopard, Lagoon, Horizon, Aquila, Two Oceans, Fountaine Pajot, or Longreach, the meticulous construction, voluminous interior, and genuine cruising capability here deserve close consideration. Not For Sale in U.S Waters. Price does not reflect duty or shipping.

SPECIFICATIONS

Basic Information

Category:
Motor yachts

Year Built:
2026

Sub category:
Catamaran

Country:
United States

Model Year:
2026

Dimensions

LOA:
53' 0" (16.15 m)

Max Draft:
13' 5" (4.08 m)

Beam:
25' 0" (7.62 m)

Speed, Capacities and Weight

Cruise Speed:
20 Knots (23.02 MPH)

Water Capacity:
211 Gallons

Max Speed:
24 Knots (27.62 MPH)

Fuel Capacity:
924 Gallons

Accommodations

Total Heads:

3

Hull and Deck Information

Hull Material:

Fiberglass and Plastic Yachts

Hull Designer:

N/A

Deck Material:

Fiberglass

Interior Designer:

N/A

Hull Configuration:

N/A

Engine Information

Engines:

2

Engine Type:

Inboard

Manufacturer:

Cummins

Fuel Type:

Diesel

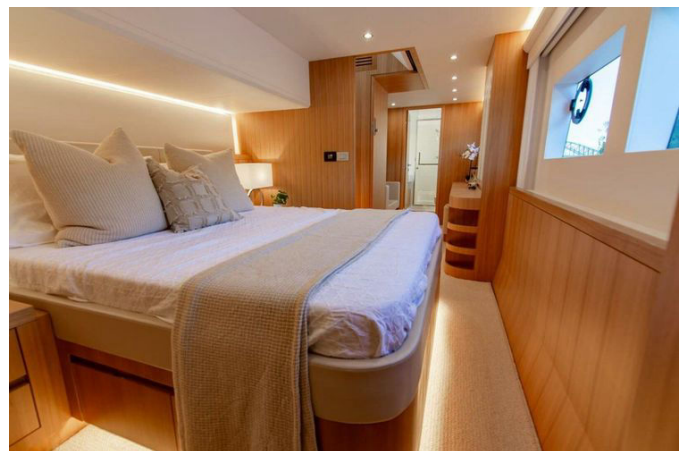
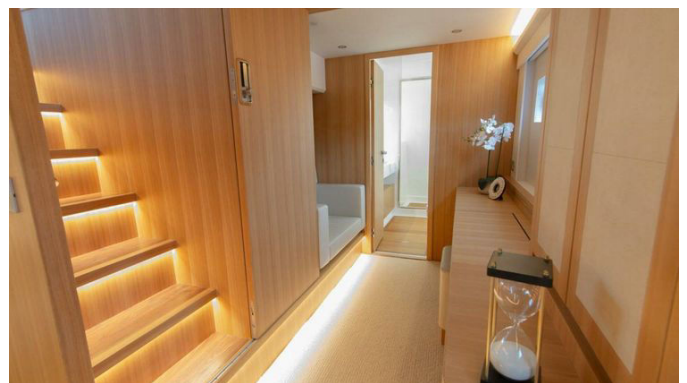
GALLERY

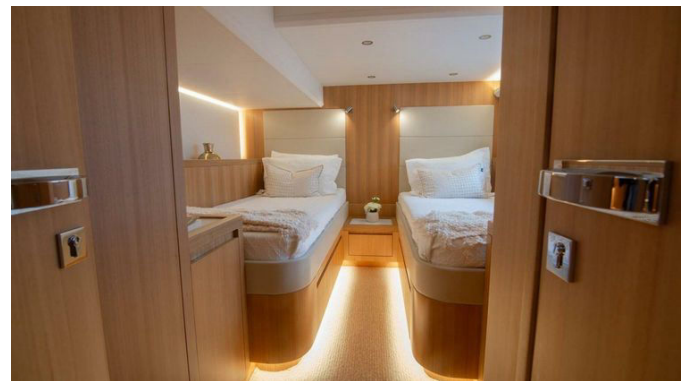












DETAILED DESCRIPTION

Introduction

Featuring exceptional bridge deck clearance, generous volumes and outstanding range, the ILIAD 53F is purpose-built to take you further in absolute comfort and unmistakable style. This impressive motor yacht pampers you with superb accommodations and expansive interior living spaces, all finished with exquisite craftsmanship and equipped with state-of-the-art appliances. Extraordinary outdoor areas include a spacious cockpit and a remarkable flybridge that redefine the intelligent use of space, amenities and relaxation. With abundant storage for extended passage-making and a class-leading cruising range of 2,500 nautical miles, the ILIAD 53F turns bluewater ambition into effortless reality.

Structural materials

The ILIAD 53F is engineered on a robust composite platform, with the hull bottom and sides formed in a sandwich of GRP and PVC core at 80–100 kg/m³ density, while the main deck and deckhouse are likewise constructed in GRP/PVC sandwich at 60 kg/m³. The entire hull lamination is executed in premium vinylester resin for superior osmosis resistance, with all other laminates in durable polyester isophthalic resin. Primary laminates are built by infusion for strength and weight optimization, complemented by GRP stiffeners laminated over PVC formers by hand lay-up directly to the shell. A white DSM gelcoat delivers a flawless finish. The lower deck structural cabin sole is a GRP sandwich, and watertight and structural bulkheads are also manufactured in GRP/PVC sandwich at 80 kg/m³, while partition bulkheads are in marine plywood; all bulkheads are securely fastened to the shell by lamination. Independent aluminium 5052 tanks are provided for fuel,

freshwater, and both grey and black water, enhancing reliability and serviceability on long passages.

Engine and marine systems

Power comes from twin 550 HP Cummins engines, an upgrade from 440 HP, delivering confident performance, assisted by a bow thruster for precise low-speed control. Electrical self-sufficiency is enhanced by an Onan 17.5 kW generator with muffler and gas-water separator, upgraded from 13.5 kW, while a Climma CWS air-conditioning system provides 65,000 BTU of climate comfort with inverter efficiency. Independence offshore is further secured by a Sea Recovery Aqua Whisper Mini 1400-2 watermaker producing 211 L/h. The yacht features two engine rooms accessed via hatches on the main deck, insulated with Pyrotek Sorberbarrier, and a bonding system using a 4 x 32 mm copper strip. Propulsion integrity includes two shaft-drive gearboxes, two duplex stainless-steel shafts turning through GRP sterntubes, twin 316L stainless-steel rudders, and two Cu3 four-blade fixed propellers. Effortless control is ensured by a Sea-Star hydraulic helm and hydraulic steering system, while Centek mufflers quieten the main engines and generator. Engine room air management is handled by two air inlets with moisture eliminators and two air blowers for forced ventilation, supported by four fire dampers with remote shut-off and twin Seafire automatic fire-suppression systems with heat sensors and alarms. Filtration and fuel handling are comprehensive, with two engine fuel filters, a genset fuel filter, a fuel transfer pump, and Trident 365 fuel hose. Safety and service systems include eight bilge pumps throughout the boat with high-water alarms, a 60 liters/16 gallons water heater, two freshwater pumps, and three grey-water sump pumps with a dedicated tank, plus both grey- and black-water macerator pumps. Practicality on deck extends to three wash points at the cockpit, bow and flybridge, and visibility is enhanced by two engine-room cameras and one docking camera. Performance refinement is

completed with interceptors.

Electrical system

A fully bonded electrical architecture with ground plate underpins dependable operation, supporting 24VDC and 220/110VAC ship systems. Starting power is supplied by two 150 Ah AGM gel-type engine batteries and one 150 Ah AGM gel-type generator battery. Renewable energy arrives via an upgraded 1,600 W solar array on the hard-top feeding a 24V 600 Ah lithium house bank, managed through a Victron Multiplus 24/5000/120 inverter/charger and a Victron Orion 24/12-40 converter. Premium switchgear and protection include Vimar switches and BEP circuit breakers and fuses, while illumination is entrusted to Quick Spa LED lights inside and out, and Hella Marine navigation and anchor lights. Clean distribution is ensured via main AC/DC switchboard panels, with shore connectivity provided by two 50A Marinco cords and Vimar 220/110V outlets throughout.

Electronics

The helm is comprehensively outfitted with an autopilot and control head, and an upgraded suite of four Garmin 16-inch multifunction displays—two at the flybridge and two at the main-deck helm. Situational awareness and insight are enriched by an echo sounder and GPS RS 130 with backbone and cables, AIS with antenna and VHF with antenna, plus a CP 100 fish-finder sensor with CPT 120 transducer. A FLIR Quantum Q24C radar extends your horizon, while a chain counter delivers precise anchoring control.

Exterior outfitting

On deck, refinement meets capability with a hydraulic lifting stern

platform—extendable up and down—with elegant teak finishes (upgrade), complemented by an aft cockpit folding-edge teak table and a flybridge coffee/dining table in teak on a fixed pedestal. The flybridge galley elevates entertaining with a stainless-steel Kenyon Texan electric grill with hood (upgrade) and a Vitrifrigo IM XT OCX2 HYDRO ice maker (upgrade). Essential equipment includes a horn, two rope cutters (upgrade), a remote-controlled dash-mounted searchlight, and a full set of fenders and mooring lines six. The underwater body benefits from a primer coat and black antifouling, with PropSpeed applied to shafts and propellers, and a robust hull structural keel. Natural light and airflow are optimized by seven hull portlights, four Lewmar deck hatches, and a large windshield hatch on the main deck, while side protection is assured by a stainless-steel cap rub-rail. Mooring hardware comprises eight 13-inch stainless-steel cleats and two 15-inch stainless-steel bollards. Ground tackle is formidable with a vertical Quick windlass rated at 2,300 W (windlass upgrade) and an extra 40 m of anchor chain, paired to a Lewmar DTX 40 kgs/88 lbs anchor and 60 m/196 ft of 10 mm/3/8" short-link chain. Safety and poise are expressed in S/S 316L handrails on the main deck and flybridge, stainless-steel cockpit stern gates, and twin hot/cold shower faucets fitted at the port and starboard transom steps. Swim access is superb via a Swissway swim ladder with Carina railing, telescopic 3 + 2, hidden and flush-mounted in the transom. The flybridge crowns the experience with a GRP hard-top and stainless-steel navigation mast, a dedicated helm station with engine controls and displays, a tilt-mechanism steering wheel and a magnetic compass, a drawer fridge, and a galley cabinet with sink, hot/cold faucet and solid-surface countertop, shielded by an S/S 316L and dark-acrylic windscreen; a gate closes access to the aft upper deck, and a hatch secures the flybridge stairs. All outdoor cushions are upholstered in Sunbrella, with all GRP non-skid areas molded into the laminate for lasting grip. Nighttime drama is delivered by six Aqualuma underwater lights in blue or white, while Flexiteek is beautifully laid on the boarding steps, cockpit, flybridge stairs and flybridge.

Launch and recovery are facilitated by a stainless-steel davit lifting system with electric winch rated to 250 kgs, and entertainment afloat is rounded out by a Glomex TV antenna.

Interior outfitting

Inside, a three-stateroom layout creates a private sanctuary for extended cruising. Daily living is effortless with a combination washer/dryer and a thoughtfully equipped galley featuring a dishwasher, a fridge-freezer, an induction cooktop hob, and a galley oven-microwave combination. Entertainment is elegantly integrated through a Fusion system with two speakers in the saloon and cockpit, remote control, amplifier and subwoofer, and a saloon TV on an electric lift suitable for a 50-inch screen (not standard). Tactile luxury abounds with S/S 316L interior handrails, solid-surface countertops in the galley and bathrooms (LG HI-MACS), BLUM drawer systems and cabinet hinges, parquet laminate flooring in the main-deck galley/dinette area, and teak flooring in all bathrooms. The ambience is refined by timber-veneer furniture and interior décor, ceiling and wall panels upholstered in synthetic leather, and sofas and seats finished in premium synthetic leather (Ultra leather by Ultra fabrics). Social spaces are thoughtfully furnished with a saloon coffee table accompanied by two ottomans, and a dinette table paired with two stools, with additional drawer storage discreetly integrated beneath the dinette sofa.

CONTACTS

Shestakov Yacht Sales is a brokerage company specializing in the sale and service of yachts worldwide. The company offers services for buying and selling both new and used motor yachts, sailing vessels, and luxury superyachts. They also provide yacht registration, insurance, technical maintenance, crew selection, and charter organization services across the U.S., Canada, Latin America, the Caribbean, and the Bahamas.

The founder and lead broker of the company is Andrey Shestakov, a licensed and certified expert with extensive experience in marine engineering and shipbuilding.

The company has an extensive network of partnerships with major yacht manufacturers worldwide and provides services in multiple languages, including Russian, Ukrainian, Spanish, and English. The office is in Dania Beach, Florida, USA.

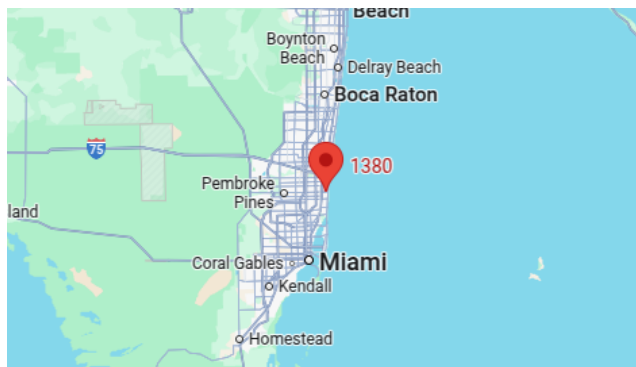
For more information and to view available yachts, you can visit the company's official website: <https://shestakovyachtsales.com>

Contact details

Phone: +1(954)274-4435

Email: andrey@shestakovyachtsales.com

Address



1380 Weeping Willow Way, Hollywood,
Florida 33019