



SHESTAKOV

Yacht Sales

MEMENTO MORI - HCB



Builder: [HCB](#)

LOA: 53' 0" (16.15 m)

Year Built: 2023

Beam: 13' 0" (3.96 m)

Model: 53 Suenos

Min Draft: 8' 2" (2.50 m)

Price: \$1,084,000 USD Subject to change.

Max Draft: 11' 6" (3.50 m)

[See full listing on our website](#)

Location: Fort Lauderdale, United States

Cruising Speed: 51 Knots (58.69 MPH)

Max Speed: 69 Knots (79.40 MPH)

If you would like to buy a yacht **MEMENTO MORI - HCB** or would like help answering any questions concerning purchasing, selling, or chartering a yacht, please call **+1(954)274-4435** or click here on <https://shestakovyachtsales.com>

TABLE OF CONTENTS

OVERVIEW	3
SPECIFICATIONS	4
Basic Information	4
Dimensions	4
Speed, Capacities and Weight	4
Accommodations	4
Hull and Deck Information	5
Engine Information	5
GALLERY	6
DETAILED DESCRIPTION	14
CONTACTS	19

OVERVIEW

Delivered in 2023, the HCB 53 Sueños represents a refined offshore center-console, conceived for owners who prize purposeful time at sea. Propelled by quad Mercury 600 V12 outboards, she presents a meticulously developed deck layout that performs exceptionally on extended day excursions while delivering luxurious zones for entertaining and onboard comfort.

This bespoke 53 Sueños is offered for immediate delivery. The HCB 53 stands out among center consoles for its versatility, combining a pedigree of luxury cruising with resolute bluewater sportfishing capability to satisfy discerning powerboat enthusiasts seeking both elegance and performance.

SPECIFICATIONS

Basic Information

Model Year:
2023

Country:
United States

Year Built:
2023

Dimensions

LOA:
53' 0" (16.15 m)

Beam:
13' 0" (3.96 m)

Min Draft:
8' 2" (2.50 m)

Max Draft:
11' 6" (3.50 m)

Speed, Capacities and Weight

Cruise Speed:
51 Knots (58.69 MPH)

Water Capacity:
58 Gallons

Max Speed:
69 Knots (79.40 MPH)

Fuel Capacity:
1000 Gallons

Accommodations

Total Heads:
1

Hull and Deck Information

Hull Material:

Fiberglass and Plastic Yachts

Hull Designer:

N/A

Deck Material:

Fiberglass

Interior Designer:

N/A

Hull Configuration:

Deep Vee

Engine Information

Engines:

4

Engine Type:

Outboard

Manufacturer:

Mercury

Fuel Type:

Gas/Petrol

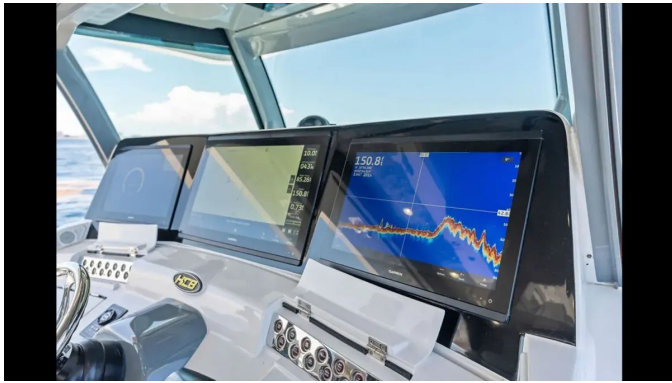
GALLERY

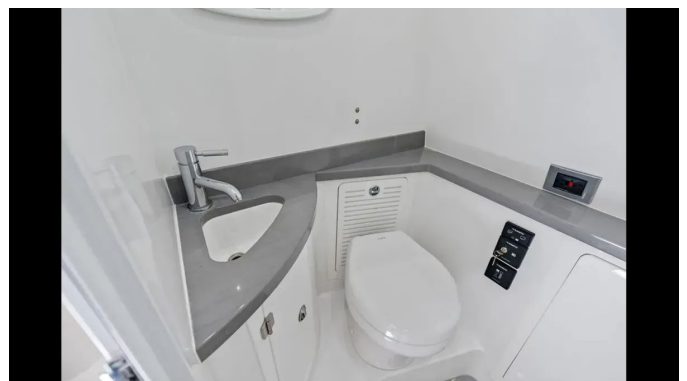
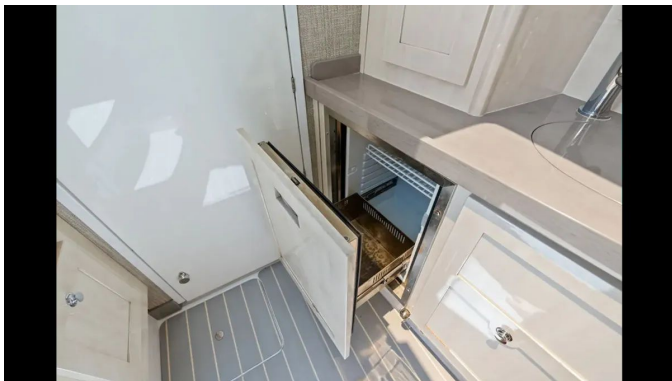
















DETAILED DESCRIPTION

Deck and exterior

Conceived for exploration and effortless entertaining, the deck features dive doors to port and starboard that open into a cockpit centered around beam-to-beam transom seating. At the transom's midpoint, access to the in-deck Seakeeper and generator is seamlessly integrated alongside generous storage, while additional in-deck compartments to port and starboard augment a dedicated mid-bow in-deck compartment and bow storage on both sides. Tackle and equipment are neatly housed in midship gunnel rod storage on port and starboard—six rod positions in total—while midship wind deflectors on each side increase comfort underway. Forward, the bow is appointed for relaxation with V-shaped seating fitted with removable cushions, port and starboard gray bow countertops, and a forward bow in-deck electric table that converts the area at the touch of a button. Practical details complete the layout, including a port aft raw water connection and four Frigid Rigid coolers positioned to port and starboard, each accompanied by line and fender holders.

Seating and social areas

Designed for effortless entertaining and all day relaxation, the yacht's social spaces begin with aft facing lounges that incorporate three drawer beverage fridges to maintain perfectly chilled refreshments, complemented by a further aft seating area with two armrests offering built in storage and 12V USB charging for personal devices. The helm features a refined dual row layout that delivers exceptional sightlines and support, centered on three captain's chairs fitted with stainless steel footrests for a composed and secure passage. A generous bench at the aft helm, equipped with two cup holders, encourages

leisurely conversation, while dedicated fishing amenities—tackle drawers located beneath the aft helm and an aft console tackle drawer with integrated waste disposal—keep the cockpit tidy and ready for every outing.

Wet bar and galley (on deck)

The on-deck wet bar and galley have been thoughtfully designed for effortless entertaining: to starboard, a Kenyon grill offers premier cooking performance, accompanied by a neatly integrated trash disposal center, while an MGS stainless steel sink is positioned to port for convenient service and cleanup.

Helm & controls

Every movement is effortless from the helm, where a Mercury Joystick with Skyhook pairs with a Side Power thruster to provide pinpoint low-speed control. An Edson stainless steel steering wheel anchors the console and sits ahead of a large Ritchie compass to inspire confidence at every heading. Bennett trim tabs with indicators enable precise trimming of the running attitude, and refined conveniences — three cup holders at the helm, two helm AC vents beneath the steering, and a small storage compartment to port — ensure comfort and practicality at the controls.

Electronics & displays

The upper helm is anchored by a central Garmin 21.5" display, flanked by twin Garmin 16" side screens that present navigation and vessel information with exceptional clarity for effortless monitoring. Mercury VesselView supplies instantaneous engine and systems telemetry, while the ACR Point Pad URP 102 delivers exacting remote-control capability. An ICOM Command Mic installed at the upper helm ensures dependable communications, and two dedicated

storage compartments there keep charts and essential gear neatly stowed and immediately accessible.

Electrical and switch panel

Positioned at the helm, a meticulously engineered electrical and switch panel consolidates every vital function within effortless reach, offering livewell controls—complete with its light and pump—forward, mid and aft bilge pumps, a high-water alarm, front and back windlass controls, fishbox operation, subtle floor illumination, tower spreader control, helm and courtesy lighting, and a battery parallel switch; each circuit is crisply labeled to ensure confident, intuitive operation.

Audio

Experience a sumptuous aural environment throughout the yacht, with two large JL Audio speakers animating the bow and an integrated system of eighteen speakers in total that envelops the vessel in balanced, vibrant clarity whether underway or relaxing at anchor.

Cabin

Descend into an elegantly finished cabin where warm teak underfoot establishes a refined maritime atmosphere and an overhead sunroof pours in abundant natural light. A full-sized berth ensures truly restorative sleep, while an 18-inch Majestic TV provides seamless onboard entertainment. Climate comfort is discreetly maintained by an air-conditioning unit cleverly installed beneath the steps, preserving sleek lines and maximizing usable space.

Cabin galley

Engineered for effortless cruising, the cabin galley blends refined simplicity with practical function: a Vitfrigo drawer fridge ensures provisions stay perfectly chilled while a Commercial Chef microwave provides quick, dependable meal preparation. A clean, streamlined sink anchors the workspace, and storage is intelligently configured with a dedicated storage drawer and a separate storage cabinet, amounting to four drawers and cabinets in total for neatly arranged galley essentials.

Cabin head

Every element of the cabin head has been curated for understated luxury and practical ease: a Domestic toilet fitted with an integrated tank monitor and dedicated discharge controls ensures reliable operation, while a fully enclosed rainfall stand-up shower rises above elegant wood flooring to deliver a restorative bathing experience. A refined sink is complemented by a luminous vanity mirror, together forming a polished, spa-like sanctuary aboard.

Other systems

A rock-solid Westerbeke generator supplies generous onboard electrical capacity, while a Seakeeper 6 delivers exceptional underway stability and passenger comfort. For streamlined operation and easy maintenance, the starboard center console accommodates the generator and engine breaker bank, with the generator's dedicated start switch neatly mounted above the breakers for swift, confident engagement.

Disclaimer

The particulars provided for this yacht are offered in good faith; however, their accuracy cannot be guaranteed and no warranty is made as to the condition of the vessel. This yacht is offered for sale subject to prior sale, change of price, or withdrawal from the market without notice. The listing is presented by the broker as a convenience to its clients and is not intended to constitute a direct representation of any specific yacht for sale.

CONTACTS

Shestakov Yacht Sales is a brokerage company specializing in the sale and service of yachts worldwide. The company offers services for buying and selling both new and used motor yachts, sailing vessels, and luxury superyachts. They also provide yacht registration, insurance, technical maintenance, crew selection, and charter organization services across the U.S., Canada, Latin America, the Caribbean, and the Bahamas.

The founder and lead broker of the company is Andrey Shestakov, a licensed and certified expert with extensive experience in marine engineering and shipbuilding.

The company has an extensive network of partnerships with major yacht manufacturers worldwide and provides services in multiple languages, including Russian, Ukrainian, Spanish, and English. The office is in Dania Beach, Florida, USA.

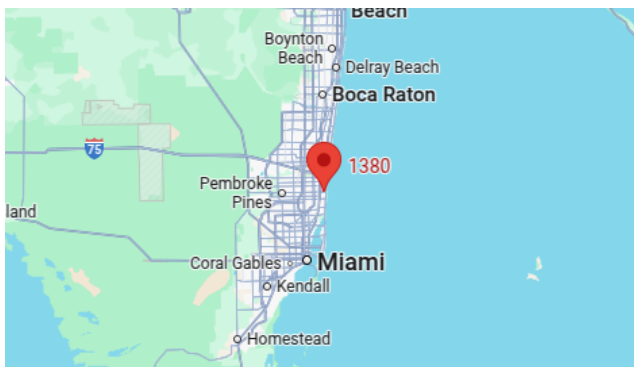
For more information and to view available yachts, you can visit the company's official website: <https://shestakovyachtsales.com>

Contact details

Phone: +1(954)274-4435

Email: andrey@shestakovyachtsales.com

Address



1380 Weeping Willow Way, Hollywood,
Florida 33019