

DESTINY - AZIMUT YACHTS



Builder: [Azimut Yachts](#)

Beam: 16' 0" (4.95 m)

Year Built: 2023

Model: N/A

Price: \$1,739,000 USD Subject to change.

[See full listing on our website](#)

Location: Naples, United States

LOA: 53' 0" (16.15 m)

TABLE OF CONTENTS

OVERVIEW	3
SPECIFICATIONS	4
Basic Information	4
Dimensions	4
Speed, Capacities and Weight	4
Hull and Deck Information	5
Engine Information	5
GALLERY	6
DETAILED DESCRIPTION	17
CONTACTS	25

OVERVIEW

The Azimut 53 Fly marries quintessential Italian refinement with lively performance and an intelligent approach to interior volume, resulting in a remarkably adaptable flybridge motor yacht. Its sleek profile belies an unexpectedly spacious interior, where an open-plan salon flows into an aft galley and expansive windows flood the living areas with natural light, creating a crisp, contemporary atmosphere.

Below decks, a three-stateroom layout is anchored by a full-beam owner's suite, complemented by a forward VIP and a twin guest cabin to accommodate six guests comfortably, while a dedicated crew cabin aft preserves privacy and professional service. Outdoor life is equally well considered: a gracious flybridge, an inviting aft cockpit and a luminous foredeck lounge offer abundant options for entertaining, weekend retreats or relaxed passagemaking with family and friends.

Propulsion comes from twin Volvo Penta IPS 950s, which deliver assured handling, efficient cruising and intuitive joystick docking for effortless maneuvering. Destiny is a two-owner yacht, meticulously maintained by a professional captain and crew. Significant enhancements include a Seakeeper gyro stabilizer, cockpit docking station, bow thruster and Skyhook station-keeping, teak decking throughout, aft crew accommodation, Starlink connectivity, an extra set of canvas covers for all exterior seating and a custom aluminum boarding ladder—refinements that elevate this motor yacht for discerning sport cruiser aficionados.

SPECIFICATIONS

Basic Information

Category:
Motor yachts

Year Built:
2023

Sub category:
Motor Yacht

Country:
United States

Model Year:
2023

Dimensions

LOA:
53' 0" (16.15 m)

Beam:
16' 0" (4.95 m)

Speed, Capacities and Weight

Water Capacity:
155.9 Gallons

Fuel Capacity:
634 Gallons

Hull and Deck Information

Hull Material:

Fiberglass and Plastic Yachts

Hull Designer:

N/A

Deck Material:

Fiberglass

Interior Designer:

N/A

Hull Configuration:

N/A

Engine Information

Engines:

2

Engine Type:

Inboard

Manufacturer:

Volvo

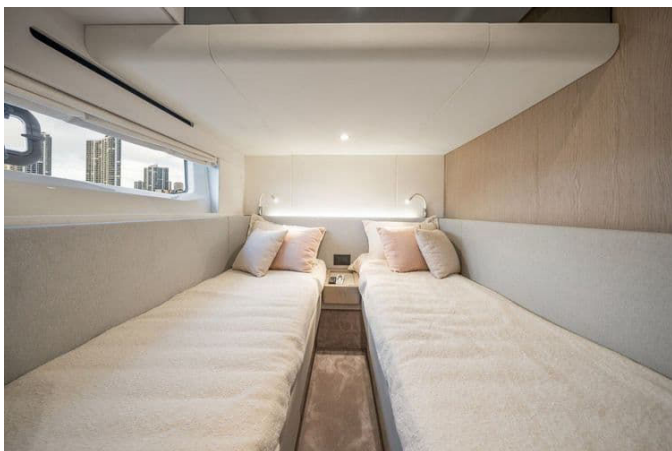
Fuel Type:

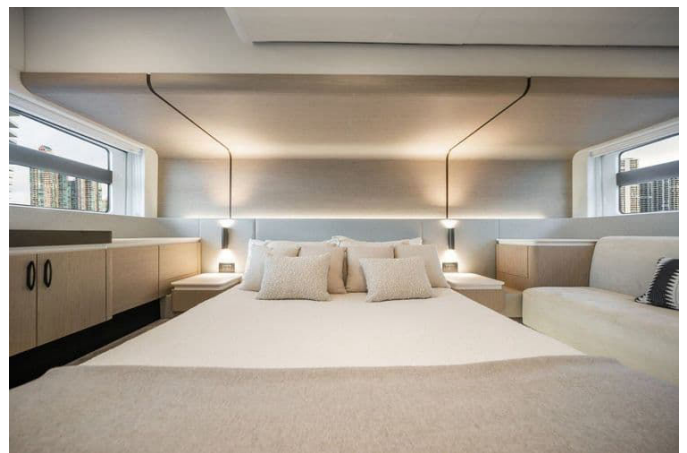
Diesel

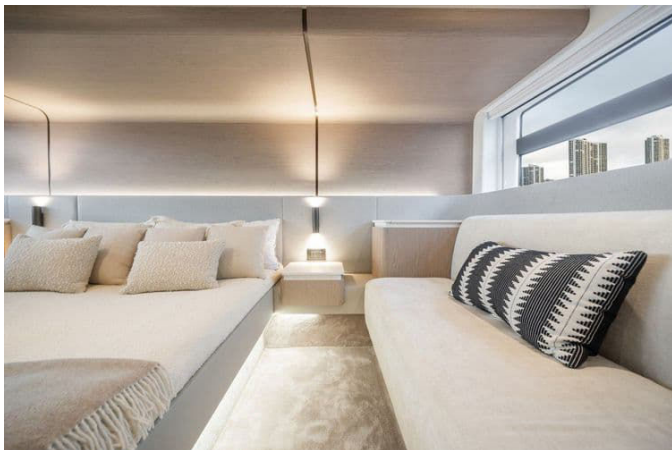
GALLERY























DETAILED DESCRIPTION

Options

A curated suite of options elevates capability, comfort, and control at every turn: the Advance Package anchors the specification, complemented by double RACOR filters, extra conduits, and a watermaker disposition. Precision handling comes courtesy of electric mooring winches in the cockpit, an additional control for the electric searchlight, a proportional bow thruster, Volvo dynamic positioning system – Skyhook, and an auto dynamic trim interceptor, while a Seakeeper stabilizer 9 keeps the ride composed. Shore power is effortlessly managed by a motorized shore power cord reel and a shore power isobooster, further safeguarded by a Clearline air conditioning raw water purification system. Exterior protection and elegance include covers for flybridge sunbathing cushions for the bow, comprehensive exterior covers for the flybridge helm seat, dashboard and flybridge sofa, mesh window covers, a flybridge cover, a flagpole, and a painted boot stripe with the painted hull and gunwhale in Thames Met. Style and materials are sensitively upgraded through a decor upgrade, Miele Appliances for the oven and cooktop, the upgrade of standard external cushions to Batyline fabric in lieu of simil leather, and the Besana Snow Carpet on the Lower Deck. Social spaces blossom with a bimini on the bow with removable poles, bow sunbathing cushions with cover in Batyline fabric, a foredeck lounge with a convertible bench/sunbed in Batyline fabric, and a flybridge openable hi-lo table with a synthetic marble insert top and Corian frame in lieu of the standard fixed teak table, accompanied by flybridge furniture with refrigerator and barbecue and a hard top on fridge. The cockpit is refined with a chair (mod. Nausicaa), dedicated furniture with sink and storage, an icemaker for that furniture when selected, two refrigerated bottle coolers in the same furniture, a cockpit

docking–maneuvering station, a cockpit table with a synthetic marble insert top and Corian frame, dimmer lights on the flybridge, and a hi-lo openable table in the salon. Practical enhancements abound: an auto ladder in stainless steel and teak connecting the transom to the swim platform, stainless steel anchor, teak in the cockpit, on the side decks, and on the swim platform, two additional cleats on the transom, six spreader lights on the aft fly, and two underwater lights on the transom. Interior appointments include a co-pilot seat on the fly in Batyline fabric and another co-pilot seat at the main helm, a crew cabin, a safe in the master cabin, vanity furniture in the master cabin, a blackout system roll for the master cabin roman shade curtains (available if the roman shade curtains for cabins option is selected), roman shade curtains for cabins in lieu of standard venetian curtains with blackout fabric for VIP and guest cabins only, and a deluxe lighting package featuring additional reading lamps and LED stripes (details available on the Dealer web lounge). Culinary and house-keeping amenities are equally thorough, with a winecooler in the galley, a washer–dryer combo unit, a set of cooking pans, a complete set of cutlery, crockery and glasses, a set of linens for cabins, a set of linens for the crew cabin, and a set of towels for 1 person with the Azimut logo. Comfort extends to the heads with a toilet featuring a bidet faucet function in both the master and VIP head. Navigation, safety and entertainment are fully addressed by Garmin AIS 800, the Garmin Platinum package, three Garmin videocameras, and an audio/video package with TracVision SAT TV antenna and decoders, including a hi-lo system for the TV in the salon. Peace of Mind Warranty further underscores confidence in ownership.

Standard features

The flybridge invites open-air living through a starboard-side stairway in GRP with teak steps, a non-slip floor and an access door that lead to a commanding space protected by a plexiglass and painted steel windscreen and finished with

the boat logo on the side GRP and stainless steel handrails. A convivial dining area features a C-shaped outdoor sofa with backrest and removable cushions paired to a table on a central fixed stainless steel leg, while a fore sunbed area beckons to relax. The optional flybridge bar cabinet integrates a sink built into the cabinet with a retractable water tap, a fridge/icemaker, a barbecue with a stainless steel protective cover for the cabinet door and a safety off switch, plus a waste bin. At the helm, a single helm seat and adjustable steering wheel face a dashboard comprising electronic navigation instruments in BRONZE version, engine throttles, the anchor winch control and chain meter counter built into the electronic instrumentation, audible alarm controls, communication systems (VHF), and keys for horn, bilge and mute functions. Scuppers, a light mast, navigation lights and a manual searchlight complete the upper deck's purposeful specification.

Forward, the bow is meticulously arranged with a chain locker accessible through a drainage-equipped hatch, fenders storage in the fore peak, and stainless steel anchor line anti-rubbing protection, plus a bow hatch serving as an emergency exit from the VIP cabin. A four-seater sofa facing the bow with removable cushions crowns a non-slip deck with scuppers to manage run-off. Along the walk arounds, practicality reigns with two "Diesel" refueling plugs with covers, one "Water" fresh water filling plug, and one "Waste" black water outlet plug, all set against a rub-rail in stainless steel and high resistance PVC, a non-slip floor, and a pulpit with handrail to ensure secure passage.

Aft, the cockpit is reached from the starboard side and centers on a six-seat L-shaped bench in GRP integrated into the deck with matching cushions, flanked by mooring stations on both sides and a handrail beside the flybridge access stairs. The saloon welcomes through an aluminum door with tempered glass composed of three flat panels that open towards port, and the engine room is accessed through a door in the cockpit floor. The entire area benefits from a non-slip floor and discreet spotlights recessed into the cockpit ceiling panel. A hydraulic platform extends the lifestyle over the water with a

swimming ladder, hot and cold water shower head and non-slip surface, and provides access to the crew cabin through an aft deck door. An installable tender (optional) can be accommodated here, with the recommended tender being Pirelli J29 and a maximum installable platform load of 380 kg* (837.75 lb*), the above value considering 180 kg (396.83 lb) of water toys plus 200 kg (440.92 lb) for operators and various accessories.

At the wheelhouse, a single helm seat pairs with a leather adjustable steering wheel with stainless steel spokes, fronting a dashboard that includes electronic navigation instruments in BRONZE version, the anchor winch control and chain meter counter integrated into the instruments, engine throttles, communication systems (VHF), a magnetic compass, a USB socket, adjustable air conditioning outlets, and keys for horn, windscreen wipers, windshield washers, engine battery parallel, bilge and mute activation, delivering fingertip command.

Within the saloon and dinette, oak cupboards and a carpeted floor set a warm tone around a two-seat sofa to starboard and a four-seat C-shaped sofa to port, with a dedicated cabinet for crockery and provision for a TV system with aerial. The ceiling artfully combines GRP and lacquered wood, with sliding curtains, a saloon door blind, and two loudspeakers adding refinement, while a saloon table on a stainless steel leg anchors the space. The galley, located aft on the main deck to port with a laminated floor, offers a ceramic glass range with two hobs, an extractor hood, a stainless steel sink, a fridge/freezer (220 l - 7.76 cu.ft), a microwave oven plus grill, and a waste bin, all carefully positioned for efficient service.

Below, the access corridor with carpeted floor features spotlights, bulwark coating in wood and leatherette, and sturdy corridor grabrails. The full-beam owner's cabin centers on a double bed on the yacht's centerline with a foldaway bed base and locker, framed by a wooden headboard and two fixed bedside tables with openable tops. Stowage is abundant with a cabinet with

panels and shelves to starboard and a walk-in wardrobe with hanger bar to port, complemented by a sofa to port, spotlights, two openable portlights, hull windows, venetian blinds, a mirror on the cabin's fore bulkhead to starboard, leatherette bulwark coating, fabric wall upholstery, leatherette and GRP ceilings, provision for TV, sockets, and an air conditioning system control panel (if A/C installed). The owner's head, forward on port, provides independent access, a lacquered top with a round Vetro Freddo washbasin, a TECMA toilet, a mixer tap, and a separate shower enclosure with a flat shower door, a chromed shower rail, a mirrored wall unit above the washbasin and an underbasin cabinet with shelves, spotlights, one openable portlight, venetian blinds, non-slip GRP shower flooring, sockets, and a full set of head accessories.

The VIP cabin at the bow, accessed via the central corridor, presents a double bed on the centerline with a locker on the plane and a wooden headboard, two openable wall units with storage areas on each side over the windows, and a pair of wardrobes with hanger bars and mirrors. A leatherette and gelcoat ceiling with spotlighting bathes the space, while an emergency exit in the ceiling through a concealed rectangular hatchway leads to the fore sunbed area. There is direct access to the VIP/guest head, and comfort is assured by two openable portlights embedded in the windows, venetian blinds, fabric-upholstered bulwarks, a carpeted floor, an air conditioning control panel (if A/C installed), and sockets. The guest cabin to starboard features two single beds with lockers, a wardrobe with hanger bar and shelves, a central bedside table between the beds, a wall unit on starboard, painted ceilings with spotlights, a leatherette headboard, one openable portlight, a carpeted floor, bulkhead coatings in fabric, wood and lacquered finishes, and a venetian blind. Serving VIP and guest cabins alike, the head positioned abaft the VIP cabin to starboard offers direct access from the VIP cabin or the corridor and mirrors the owner's head with a lacquered top and round Vetro Freddo washbasin, mixer tap, TECMA toilet, a separate shower enclosure with a flat shower door,

a chromed shower rail, spotlighting, an underbasin cabinet with shelves, a mirrored wall unit, one openable portlight, a venetian blind, non-slip GRP shower flooring, full head accessories, and sockets. For extended cruising, the optional crew room at the stern is accessed from the platform and includes a single bed, a starboard-side wardrobe, a GRP ceiling panel, shelves at the foot of the bed on the bulkhead, an openable portlight, a GRP non-slip floor, and spotlights. Its crew head is equally practical, with a TECMA toilet, washbasin, chrome mixer with extractable shower head, shower area with waterproof curtain, mirrored wall unit, a cupboard under the sink, a socket, and head accessories.

Electrical systems are engineered for reliability with shore-powered power supply, three DC electric panels (one on the fore bulkhead of the engine room), two AC electric panels (one on the fore bulkhead of the engine room), an auxiliary electric panel installed in the saloon entrance cabinet, an emergency control panel on the electric panel, and a battery cut-out control panel in the cockpit. Onboard voltages include 230 V - 50 Hz AC, 24 V DC from the battery set, and 12 V DC from the battery set and an AC/DC voltage reducer. A single-phase generator rated at 5 kW / 230 V AC - 50 Hz for the EU system offers remote start up, feeding an AC network that connects via one EU 3P - 50 A shore power socket; all AC sources terminate on the main electric panel in the engine room for the 230 V network, protected by suitably sized power circuit breakers and introduced into the network via remote control switches. Energy storage is comprehensive with six service batteries 95 Ah - 12 V DC, four engine batteries 95 Ah - 12 V DC, one generator battery 70 Ah - 12 V, one service/engine starter battery charger 60 Ah - 24 V, and one generator starter battery charger 12 Ah - 12 V.

Electronic navigation instruments correspond to the flybridge dashboard equipment and internal dashboard equipment as standard, with alternative or additional equipment detailed in the Optional price list. Bilge safety is ensured by a main system of three automatic and independent pumps located in each

watertight compartment—two in the engine room (fore and aft) and one central under the owner's cabin floor—backed up by a secondary manual system with two manual pumps drawing from three suction points in the same locations. Fire safety is anchored by a gas fire extinguisher in the engine room, manual activation control in the cockpit, and an indicator/reset on the instrument board.

Fuel autonomy flows from two plastic fuel tanks located crossways at the fore part of the engine room, totaling 2400 l (634 US.liq.gal.), monitored by two electronic fuel level sensors with indication on the wheelhouse and an optical gauge on the port tank. Two engine single RACOR settling filters, vents on each bulwark, remote diesel shut-offs via a 24 V solenoid valve for the engines and a 12 V solenoid valve for the generator, plus two refueling plugs on the walk arounds (one per side) ensure controlled delivery. Versatility is enhanced by the possibility of leveling diesel between tanks using a communicating pipe and refueling both diesel tanks from a single plug via the same communicating pipe. Fresh water service is equally robust with one 590 l (155.86 US.liq.gal.) plastic tank under the accommodation tray beneath the stairway floor and lobby, a filling cap on the fore part of the starboard walk around, a water pressure pump unit in the engine room port aft side (24 V - 50/60 Hz) with electronic control, a 60 liter (15.85 US.liq.gal.) water heater under the corridor, fresh water toilet flushing, a level sensor with electronic indication on the wheelhouse, and isolation via ACORN manifolds under the corridor floor.

Waste management is cleanly organized with a black water system composed of a 175 l (46.23 US.liq.gal.) polyethylene tank under the VIP cabin with an electronic level sensor, two tank vents on the bulwark with anti-odor filters, a macerator pump, a suction point from the port walk around, a TECMA toilet, and a sea outlet from the tank. Gray water is collected in a 175 l (46.23 US.liq.gal.) polyethylene central tank under the cabin area corridor with an electronic level sensor, sea outlet, two tank vents on the bulwarks, and a diaphragm pump. Seawater systems include engine cooling fed by two

seawater intakes with filters and 2" 1/2 ball valves, and generator cooling via one seawater intake with filter and a 1" ball valve.

Finally, the engine room ventilation system ensures proper air management with two extractors located abaft the engine room that convey air outside through openings on the hull bulwark, two natural ventilation ducts on each side, one natural extraction duct on each side, and a fans panel for internal air recirculation, preserving performance and reliability across every voyage.

CONTACTS

Shestakov Yacht Sales is a brokerage company specializing in the sale and service of yachts worldwide. The company offers services for buying and selling both new and used motor yachts, sailing vessels, and luxury superyachts. They also provide yacht registration, insurance, technical maintenance, crew selection, and charter organization services across the U.S., Canada, Latin America, the Caribbean, and the Bahamas.

The founder and lead broker of the company is Andrey Shestakov, a licensed and certified expert with extensive experience in marine engineering and shipbuilding.

The company has an extensive network of partnerships with major yacht manufacturers worldwide and provides services in multiple languages, including Russian, Ukrainian, Spanish, and English. The office is in Dania Beach, Florida, USA.

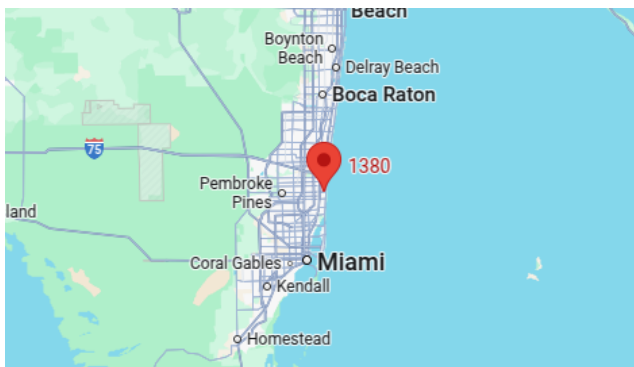
For more information and to view available yachts, you can visit the company's official website: <https://shestakovyachtsales.com>

Contact details

Phone: +1(954)274-4435

Email: andrey@shestakovyachtsales.com

Address



1380 Weeping Willow Way, Hollywood,
Florida 33019