

PRINCESS 54 FLY SNOW QUEEN - PRINCESS



Builder: [PRINCESS](#)

LOA: 54' 0" (16.59 m)

Year Built: 2008

Beam: 15' 0" (4.57 m)

Model: 54 Flybridge

Cruising Speed: 21 Knots (21 MPH)

Price: \$613,812.53 USD Subject to change.

[See full listing on our website](#)

Location: Genoa, Italy

Max Speed: 34 Knots (34 MPH)

TABLE OF CONTENTS

OVERVIEW	3
SPECIFICATIONS	4
Basic Information	4
Dimensions	4
Speed, Capacities and Weight	4
Hull and Deck Information	5
Engine Information	5
GALLERY	6
DETAILED DESCRIPTION	9
CONTACTS	13

OVERVIEW

The Princess 54 stands as a showcase of innovation and vision in contemporary motor yacht design, blending clever spatial planning with superb seakeeping and muscular performance. This elegantly crafted flybridge motor yacht presents a remarkably airy salon; its open-concept design reveals a dramatic bow-to-stern sightline framed by three-panel sliding glass doors flowing from the teak-decked cockpit. With twin lounge zones, a cocktail station, and a flatscreen TV/DVD, the main deck creates an effortlessly sophisticated setting for entertaining at sea.

Below, a full-beam owner's suite with signature vertical hull windows is complemented by a forward VIP and a starboard twin guest cabin, with the option of an occasional aft guest or crew berth—accommodations that deliver true luxury on a grand scale. Up top, the expansive flybridge offers abundant seating alongside a separate double sunpad, plus a well-appointed wet bar with sink, electric grill, and top-loading cool box—perfect for long, sunlit passages.

Uniting exhilarating performance with refined comfort in a timeless profile, the Princess 54 sets a benchmark among flybridge yachts. As a luxury yacht, flybridge motor yacht, performance cruiser, and offshore motor yacht, it is crafted for confident bluewater cruising and relaxed Mediterranean-style living, making it a standout in the flybridge range.

SPECIFICATIONS

Basic Information

Category:
Motor yachts

Year Built:
2008

Model Year:
2009

Country:
Italy

Dimensions

LOA:
54' 0" (16.59 m)

Beam:
15' 0" (4.57 m)

Speed, Capacities and Weight

Cruise Speed:
21 Knots (21 MPH)

Water Capacity:
125 Gallons

Max Speed:
34 Knots (34 MPH)

Fuel Capacity:
550 Gallons

Gross Tonnage:
51809 Pounds

Hull and Deck Information

Hull Material:

Fiberglass and Plastic Yachts

Hull Designer:

N/A

Deck Material:

Carbon Fiber

Interior Designer:

N/A

Hull Configuration:

Deep Vee

Engine Information

Engines:

2

Engine Type:

Inboard

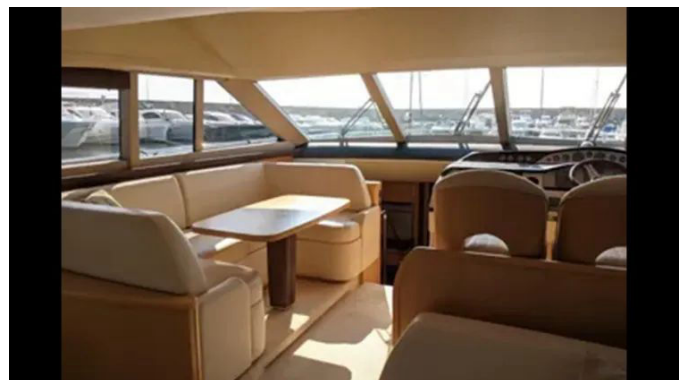
Manufacturer:

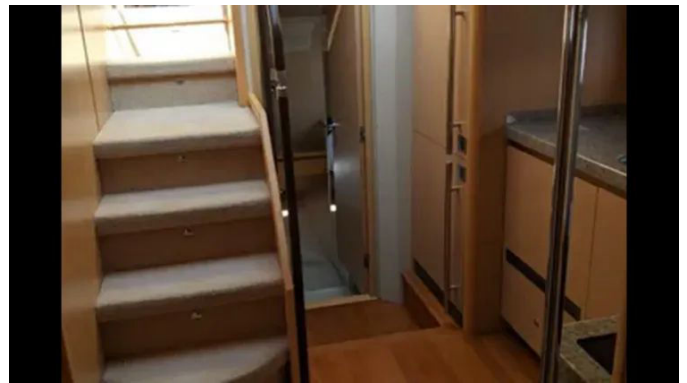
Volvo

Fuel Type:

Diesel

GALLERY







DETAILED DESCRIPTION

additional information

Thoughtfully arranged for easy use and safety, the self-draining cockpit features a comfortable upholstered seat and a gas-strut hatch to the lazarette, with a separate lockable access hatch to the engine room. Broad steps lead to the side decks, discreet cockpit lighting sets the mood after dark, and a sturdy transom gate opens onto the bathing platform. Practical side lockers and dedicated fender stowage keep gear tidy, while a 220/240 V shore support inlet, stainless-steel handrails, and remote fuel shut-off cocks in a locker underline the yacht's seagoing readiness. A molded stairway with teak treads rises to the flybridge, and the teak-laid transom platform includes a foldaway swimming ladder plus hot and cold deck shower. A transom storage locker and a dinghy chock system complete this well-resolved layout, exactly what you expect from a luxury flybridge motor yacht.

additional information

All cabins and bathrooms are bright and airy, equipped with opening and/or fixed portholes and quiet-running electric Quietflush toilets; the optional crew cabin is fitted with a marine WC. In the deck saloon, a starboard U-shaped sofa with table faces a matching starboard sideboard, with bottle and glass storage and a refrigerator close at hand. Entertainment is seamless thanks to an LCD TV/DVD/radio feeding both saloon and exterior speakers. Triple stainless-steel framed sliding doors open wide to the cockpit, with tinted windows and curtains or sunscreens to every window and door. Flush-fit halogen downlighters, together with a clock and barometer, complete this welcoming space.

Power systems are robust and well segregated, with four heavy-duty batteries for engine starting and four heavy-duty auxiliary batteries. Engine alternators charge both banks through blocking diodes, supported by a 75-amp 24 V float charger for the auxiliary bank and a 5-amp 24 V float charger for the engine bank. Remote battery isolator switches are positioned at the main switch panel, with 24 V to 12 V converters serving selected navigation and radio circuits and circuit breakers guarding every circuit. On the 220/240 Volt side, a 9.5 kW generator sits in its own sound shield with water-cooled, specially silenced exhaust, backed by an automatic fire extinguisher. A shore support inlet in the cockpit locker includes cable stowage; a polarity check system, generator/shore changeover at the main control panel, earth leakage safety trip, and circuit breakers on all circuits are standard. There are 240 V outlets in the owner's stateroom, the forward stateroom, a double outlet in the galley, and two outlets in the saloon, plus shaver points in all bathrooms.

The galley is fitted with an Avonite (or similar) worktop, a four-zone ceramic hob, and a combination microwave/conventional oven with grill. A stainless-steel sink with mixer tap, chopping board, full-height refrigerator of 199 litres with a 71-litre freezer, waste bin, overhead and concealed lighting, drawers, lockers, a dedicated cutlery drawer, and provision for a washer/dryer make extended cruising simple.

Safety systems include an automatic fire extinguisher with manual override in the engine room and generator space, three hand-operated fire extinguishers placed in the owner's stateroom, the guest stateroom, and the galley, with an additional extinguisher fitted when the optional aft cabin is specified.

Performance hardware features four-bladed aquafoil propellers in nickel-aluminium bronze and a 125 kgf bow thruster with dual-station controls. The engine room benefits from dedicated lighting, a lockable access hatch, extractor fans with electronic time delay, and electronic engine and gear shift controls. Helm feel and trim are refined via power-assisted hydraulic

steering and trim tabs with indicators.

Deck detailing is premium throughout: teak-laid transom platform, cockpit deck, flybridge stairway, and steps to the side decks; a reversible electric anchor winch with controls at the foredeck, main helm, and flybridge; and a self-stowing 20 kg Delta anchor on 40 m of chain with a stemhead roller that launches and retrieves automatically. Stainless-steel bow, stern, and spring cleats pair with bow fairleads, a pulpit and guard rails with fender baskets, coachroof and flybridge rails, and a rubbing band with rubber insert. Night operations are supported by a full set of IMCO navigation lights, a riding light, a twin-beam searchlight with dual-station remote controls, and twin electric horns, with fuel and water fillers sensibly located. It's an exacting specification for a luxury flybridge motor yacht, bluewater cruiser, and family offshore cruiser.

flybridge

The flybridge is designed for easy days and relaxed passages: dual-station instrument controls mirror the lower helm, with visible and audible engine warnings and a bilge pump alarm for peace of mind. A double helm seat fronts U-shaped seating for six around a table, while a separate aft sunbed with storage below invites long pauses at anchor. The wetbar brings a sink and electric barbecue together with a refrigerated cool box, and loudspeakers linked to the saloon hi-fi set the soundtrack. Safe movement is assured via an integral stairway from the aft cockpit with a Perspex hatch, a wind deflector screen, stainless-steel handrails, and a GRP radar arch. Practical details include console and seat covers and matched whip aerials for VHF R/T and radio. It's an inviting upper deck for any luxury flybridge motor yacht and family cruiser.

other items supplied as standard

Every yacht leaves the dock comprehensively equipped: six fenders and four warps, an ensign staff, a first aid kit, and a boathook stand ready alongside the owner's and engine manuals. Quilted bedspreads dress all cabins, except the optional crew cabin, and a tool kit, emergency port-hole cover, and emergency tiller add reassurance. An anchor winch back-up handle, a ship's document case, and a cockpit cover complete the thoughtful inventory for a luxury flybridge motor yacht and weekend cruiser.

lower helm position

At the lower helm, twin seats with fore and aft adjustment for the helmsman pair with an opening side window and a handsome burl elm instrument console carrying full engine instruments and fuel gauges. Dual-station instruments and controls at the flybridge and lower helm include a rudder position indicator, electronic engine controls, power assisted hydraulic steering, bow thruster controls, an anchor winch remote, trim tab controls, autopilot, VHF DSC R/T, speed and distance log, echo sounder with alarm, searchlight remote control, a high speed magnetic compass, horn button, navigation light switches, and a flybridge intercom with loudhailer and foghorn. A chart table with light and chart stowage, windscreen wipers with a freshwater wash system, and bilge pump controls with visual "pump running" warnings support confident navigation. The helm also carries 24 V and 240 V electrical control panels, complemented by a dedicated 24 V and 240 V control panel. It's a clear, secure command center for a luxury flybridge motor yacht and performance cruiser.

CONTACTS

Shestakov Yacht Sales is a brokerage company specializing in the sale and service of yachts worldwide. The company offers services for buying and selling both new and used motor yachts, sailing vessels, and luxury superyachts. They also provide yacht registration, insurance, technical maintenance, crew selection, and charter organization services across the U.S., Canada, Latin America, the Caribbean, and the Bahamas.

The founder and lead broker of the company is Andrey Shestakov, a licensed and certified expert with extensive experience in marine engineering and shipbuilding.

The company has an extensive network of partnerships with major yacht manufacturers worldwide and provides services in multiple languages, including Russian, Ukrainian, Spanish, and English. The office is in Dania Beach, Florida, USA.

For more information and to view available yachts, you can visit the company's official website: <https://shestakovyachtsales.com>

Contact details

Phone: +1(954)274-4435

Email: andrey@shestakovyachtsales.com

Address



1380 Weeping Willow Way, Hollywood,
Florida 33019