

## TA-BOO - RYBOVICH



**Builder:** [RYBOVICH](#)

**LOA:** 54' 0" (16.48 m)

**Year Built:** 1970

**Beam:** 15' 0" (4.72 m)

**Model:** 54

**Max Draft:** 10' 11" (3.33 m)

**Price:** \$249,500 USD Subject to change.

**Cruising Speed:** 28 Knots (32.22 MPH)

[See full listing on our website](#)

**Location:** Delray Beach, United States

**Max Speed:** 31 Knots (35.67 MPH)

---

# TABLE OF CONTENTS

---

<b>OVERVIEW .....</b>	<b>3</b>
<b>SPECIFICATIONS .....</b>	<b>5</b>
Basic Information .....	5
Dimensions .....	5
Speed, Capacities and Weight .....	5
Accommodations .....	6
Hull and Deck Information .....	6
Engine Information .....	6
<b>GALLERY .....</b>	<b>7</b>
<b>DETAILED DESCRIPTION .....</b>	<b>14</b>
<b>CONTACTS .....</b>	<b>17</b>

## OVERVIEW

---

Launched in 1970 and presently berthed in the United States, this 54-foot wooden motor yacht marries heritage craftsmanship with genuine performance. A graceful sheer line and gleaming varnished decks announce her presence, while the hand-built wooden hull bathes each berth and passage in a warm, tactile glow that only traditional construction can provide. She draws admiring looks in every harbor and, under way, delivers a ride that feels steady, deliberate, and beautifully balanced.

Her 15-foot beam creates generous interior volume and a confident posture on the water, and a deep draft lends offshore assurance and a notably even motion through a seaway. Twin MAN inboard diesel engines give the propulsion pedigree expected by discriminating owners, allowing a comfortable cruise at 28 knots and the ability to accelerate to 31 knots with composed authority. A 1,000-gallon fuel tank supports extended runs without constant refueling, while 250 gallons of fresh water sustain onboard life for longer passages.

Deck spaces celebrate the material truth of the boat: the wood beneath your feet is as much a sensory pleasure as a visual one. Broad side decks and a purposeful foredeck make leisurely explorations at anchor effortless, and the wide cockpit and open social areas are perfectly suited to sunlit afternoon gatherings, twilight cocktails, or solitary early-morning departures. The helm is uncluttered and purpose-driven — instruments and controls positioned for clear feel and immediate feedback.

Inside, the same timeless sensibility continues in refined joinery, balanced proportions, and an atmosphere of calm that only a properly executed wooden yacht can offer. The salon is bright and inviting, opening smoothly to the galley to facilitate comfortable entertaining. Thoughtfully arranged sleeping quarters provide privacy and ease for family and guests, and two

well-appointed heads elevate the vessel's liveaboard capability from weekend retreats to serious cruising. The layout favors practical use at sea, marrying functionality with a gracious, inherently nautical temperament.

For the connoisseur who values classic lines and measurable speed, this yacht stands apart: authentic in construction, impressive in performance, and endlessly dignified in appearance. She is an invitation to travel deliberately, to arrive with presence, and to savor every nautical mile.

Will consider clean trades.

Classic Wooden Yacht. Classic Motor Yacht. Express Cruiser. Sport Yacht. Performance Cruiser. Vintage Yacht. Gentleman's Yacht. Offshore Cruiser. Diesel Inboard. MAN-Powered. 54-Foot Yacht. United States.

---

# SPECIFICATIONS

---

## Basic Information

---

**Category:**  
Motor yachts

**Year Built:**  
1970

**Sub category:**  
Sport Fisherman

**Country:**  
United States

**Model Year:**  
1970

## Dimensions

---

**LOA:**  
54' 0" (16.48 m)

**Max Draft:**  
10' 11" (3.33 m)

**Beam:**  
15' 0" (4.72 m)

## Speed, Capacities and Weight

---

**Cruise Speed:**  
28 Knots (32.22 MPH)

**Water Capacity:**  
250 Gallons

**Max Speed:**  
31 Knots (35.67 MPH)

**Fuel Capacity:**  
1000 Gallons

## Accommodations

---

**Total Heads:**

2

## Hull and Deck Information

---

**Hull Material:**

Wooden Yachts

**Hull Designer:**

N/A

**Deck Material:**

Wood

**Interior Designer:**

N/A

**Hull Configuration:**

N/A

## Engine Information

---

**Engines:**

2

**Engine Type:**

Inboard

**Manufacturer:**

MAN

**Fuel Type:**

Diesel

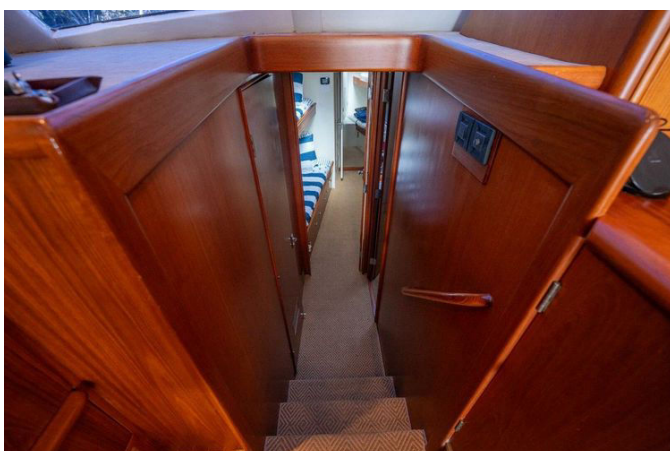
# GALLERY















---

## DETAILED DESCRIPTION

---

### Covers

---

A custom-fitted cockpit cover shelters the cockpit from sun, spray, and overnight dew, preserving finishes and upholstery so the yacht remains immaculate and ready between outings.

### Electrical equipment

---

A dependable generator pairs with a shore power inlet to deliver steady AC power at anchor or alongside, keeping onboard systems humming smoothly whether you are cruising or relaxing in port.

### Electronics

---

A well-rounded suite includes an autopilot, cockpit speakers, compass, depth sounder, GPS, a dedicated navigation center, plotter, radar, a TV set, and a VHF radio, delivering precise navigation, clear communication, and immersive entertainment at sea.

### Description

---

Owner financing available at 0% interest. Experience the timeless elegance and legendary performance of a classic sportfishing icon with this 1970 54' Rybovich, Hull Number 72. Built by the renowned John Rybovich & Sons Boat Works, she embodies meticulous craftsmanship and superior design, the very qualities that have made Rybovich yachts treasured by passionate anglers and discerning connoisseurs alike. Beneath her graceful lines, twin MAN 2848LE engines deliver the power, speed, and reliability to put you on the bite quickly

and bring you home with confidence. The classic profile and rich teak accents turn heads in every harbor, while thoughtful modern updates harmonize tradition with contemporary functionality. Below, comfortable accommodations welcome you with inviting staterooms, a fully equipped galley, and a warm, airy salon—ideal for extended trips and effortless entertaining. Lovingly maintained and carefully updated, this yacht presents a rare opportunity to own a vintage sportfish with modern dependability and enduring value. Whether you prize heritage or performance, the 1970 54' Rybovich Sportfish offers a compelling blend of both, wrapped in unmistakable Rybovich pedigree. Step aboard and experience the legacy; schedule your viewing today. Will accept clean trades.

## Inside equipment

---

Comfort on board is assured with air conditioning, heating, hot water, a refrigerator, a deep freezer, a microwave oven, an electric head, both electric and manual bilge pumps, and a battery charger to keep ship's power effortlessly maintained.

## Outside equipment

---

Thoughtful exterior touches include cockpit cushions for lounging, a sturdy cockpit table for al fresco moments, a practical gangway for easy boarding, and handsome teak in the cockpit and along the sidedecks for unmistakable classic warmth underfoot.

## Recent upgrades

---

A comprehensive refresh in March 2025 included a full exterior paint, bottom paint applied in two coats, a new cutlass bearing, new port windows, the

transom meticulously revarnished in twenty coats, new head pumps, and a new forward A/C unit. August 2025 saw the flybridge glass replaced, while August 2024 added a new saloon window tint and a full service of the helm controls, ensuring everything operates crisply and looks exceptional.

# CONTACTS

---

Shestakov Yacht Sales is a brokerage company specializing in the sale and service of yachts worldwide. The company offers services for buying and selling both new and used motor yachts, sailing vessels, and luxury superyachts. They also provide yacht registration, insurance, technical maintenance, crew selection, and charter organization services across the U.S., Canada, Latin America, the Caribbean, and the Bahamas.

The founder and lead broker of the company is Andrey Shestakov, a licensed and certified expert with extensive experience in marine engineering and shipbuilding.

The company has an extensive network of partnerships with major yacht manufacturers worldwide and provides services in multiple languages, including Russian, Ukrainian, Spanish, and English. The office is in Dania Beach, Florida, USA.

For more information and to view available yachts, you can visit the company's official website: <https://shestakovyachtsales.com>

## Contact details

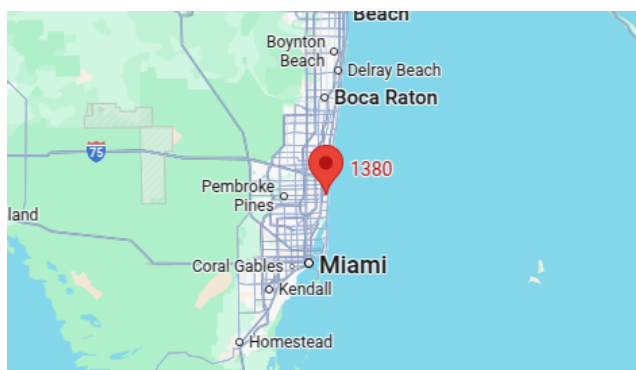
---

**Phone:** +1(954)274-4435

**Email:** [andrey@shestakovyachtsales.com](mailto:andrey@shestakovyachtsales.com)

## Address

---



1380 Weeping Willow Way, Hollywood,  
Florida 33019