



MANHATTAN 55 - SUNSEEKER

Builder: [Sunseeker](#)

LOA: 55' 0" (16.76 m)

Year Built: 2026

Beam: 16' 0" (4.88 m)

Model: Manhattan 55

Max Draft: 14' 9" (4.50 m)

Price: - Subject to change.

[See full listing on our website](#)

Location: Fort Lauderdale, United States

Max Speed: 32 Knots (36.83 MPH)

If you would like to buy a yacht **MANHATTAN 55 - SUNSEEKER** or would like help answering any questions concerning purchasing, selling, or chartering a yacht, please call **+1(954)274-4435** or click here on <https://shestakovyachtsales.com>

TABLE OF CONTENTS

OVERVIEW	3
SPECIFICATIONS	4
Basic Information	4
Dimensions	4
Speed, Capacities and Weight	4
Accommodations	5
Hull and Deck Information	5
Engine Information	5
GALLERY	6
DETAILED DESCRIPTION	26
CONTACTS	29

OVERVIEW

Meticulously crafted, the Manhattan 55 raises the standard for comfort and passagemaking, offering an array of convivial areas more commonly found aboard larger luxury motor yachts. Broad panes of glazing and polished stainless accents carve a bold, contemporary silhouette for this flybridge cruiser, while bar stools at the counter allow the galley to visually extend onto the main deck, forging a seamless indoor-outdoor relationship that is perfect for family cruising and entertaining whether at anchor or underway.

As a flybridge motor yacht, its open-plan volumes are designed to optimize living space and place focus on the versatile hydraulic bathing platform and Beach Club, where an optional integrated barbecue, overhead shower and drop-down transom bench transform the waterside into a welcoming lounge for family and friends. Up above on the flybridge, a second grill and abundant seating encourage alfresco dining and unhurried coastal passages, all propelled by twin MAN i6 800 engines.

SPECIFICATIONS

Basic Information

Category:
Motor yachts

Year Built:
2026

Sub category:
Motor Yacht

Country:
United States

Model Year:
2026

Dimensions

LOA:
55' 0" (16.76 m)

Max Draft:
14' 9" (4.50 m)

Beam:
16' 0" (4.88 m)

Speed, Capacities and Weight

Max Speed:
32 Knots (36.83 MPH)

Fuel Capacity:
580 Gallons

Water Capacity:
158 Gallons

Accommodations

Total Heads:

2

Crew Cabin:

1

Hull and Deck Information

Hull Material:

Fiberglass and Plastic Yachts

Hull Designer:

N/A

Deck Material:

Fiberglass

Interior Designer:

N/A

Hull Configuration:

N/A

Engine Information

Engines:

2

Engine Type:

Inboard

Manufacturer:

MAN

Fuel Type:

Diesel

GALLERY





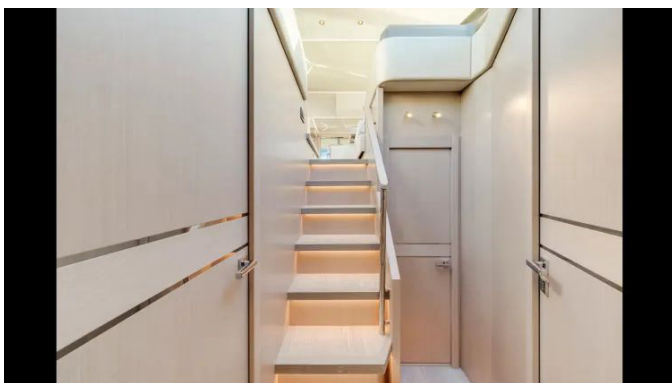




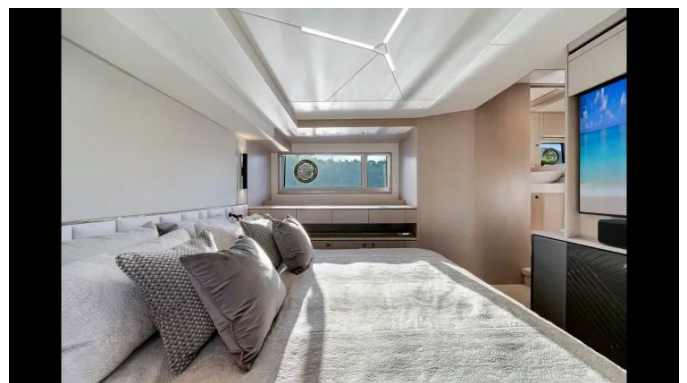
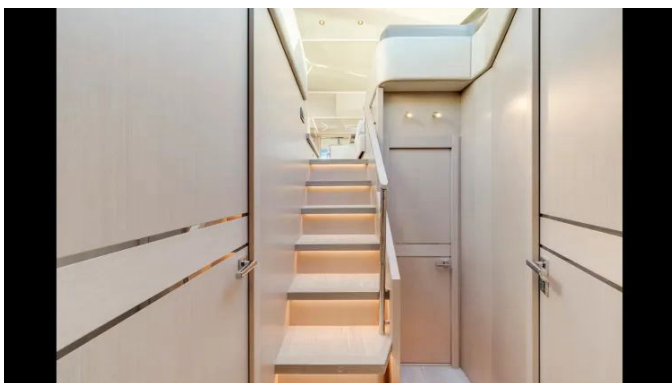


















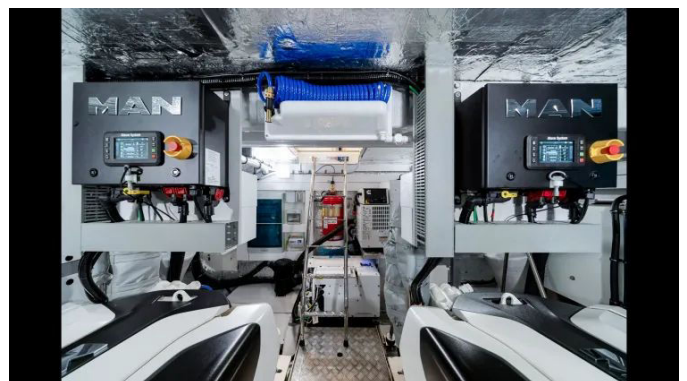














DETAILED DESCRIPTION

Factory installed options

Specified for confidence at anchor and composure under way, the yacht carries 60 metres of stainless steel 9.5 mm anchor chain matched to a Lewmar 25 kg stainless steel Delta anchor, complemented by an additional pair of ten inch oval mooring spring cleats to the aft edge of the hull band and a pair of retractable cleats for the tender at the port and starboard platform corners. The hydraulically lifting platform provides a maximum lift capacity of 450 kg, with the tender maximum set to 150 kg when a Gyro is specified, and an exclusive fold down platform seat is available only with the Beach Club package. The hull is finished in White with a Bootstripe in Jet Black, while the flybridge hardtop, sides, undersides and rear canopy are sprayed Jet Black; the radar scanner is finished LSA Jet Black and the radar chair equipment, including VHF whip aerials, is sprayed Jet Black as well (No Warranty Offered). For precise handling and effortless close quarters control, an aft docking station adds a third Aventics - Marex OS 3D joystick, paired with the MAN Aventics - Marex OS 3D dual station joystick docking system and a full Main Navigation Console Package centred on a Garmin GMR 434 xHD3 4 foot open array radar rated to 72 nm. Compass swinging and adjustment are completed with a correction card, and medium tinted film to the side windows and sliding doors balances privacy with light. On deck and al fresco, protection is comprehensive with a Main Deck Protective Covers Package and a Flybridge Protective Covers Package for general seating, sunbed, table, helm seats and wet bar cover. Entertaining is effortless thanks to a marine electric BBQ grill integrated into the flybridge wet bar and upgraded gas rams holding the wet bar lid to 250 N (Pt No 145006), while upholstered bar stools with stainless steel pivoting bases seat neatly into deck sockets. Inside the saloon,

a rise and fall TV is fitted outboard on the starboard side, and additional seating with accessible storage below expands versatility. The dining table features a fold over leaf and stands on a stainless steel electric rise and fall pedestal, and an additional double A/C outlet is discreetly positioned in the kicker board beneath the port side saloon seating under the rise and fall table. The saloon outboard starboard upholstered top, including the TV lift, is specified in Smoked Figured Eucalyptus with a high sheen satin finish, while wood flooring elevates the Saloon, Main Stairs and Lower Lobby. Sprung mattresses are supplied for the beds, and the forward cabin bed includes smart storage with a lift up lid to the aft section over a drawer. A safe concealed in the master cabin cabinetry (8.3 lts. W280mm x H165mm x D235mm) adds secure stowage. The galley is fully equipped with an integrated slimline dishwasher, an optional second freezer/icemaker and freezer drawers, and a wine cooler for thirty three bottles in the bar. A dedicated White Goods Inverter supplies the icemaker/freezer unit in the galley as per CVF 200065317. The Entertainment Inverter with seamless transfer system allows the boat's entertainment suite to run from the DC batteries and is paired to the Performance AV Package for a theatre grade experience. Practical touches include an additional socket for charging a Dyson vacuum cleaner positioned beneath the bow thruster access floor hatch in the forward cabin. Interior Wood is specified to Band Two, offering a curated choice of Flamed Dark Walnut, Nero Legna or Smoked eucalyptus, each figured in a satin finish lacquer. Crew welfare is assured with a 6000 BTU air conditioning unit, and the crew cabin is meticulously arranged with side by side Miele washer and dryer, an outboard storage cupboard and a fixed berth on top, with a flat cabin floor preserved to guarantee sufficient headroom; the retail cost is in addition to the washer/dryer option included in the package. Forward comfort is enhanced by folding backrests to the bow seating group, antifouling application is complete, and the specification is rounded out by a Main Deck Protective Covers Package and the Flybridge Protective Covers Package noted

above. Power and passage making are delivered by twin MAN i6 800 engines, each 800 PS, bolstered by the Ultimate Cruising Package and the USA Platinum Package to broaden capability and regional compliance. The yacht's finish and fittings are completed with a White hull, Jet Black bootstripe, a pair of retractable cleats for the tender, and thoughtful electrical details throughout.

Disclaimer

The details of this yacht are presented in good faith; however, the accuracy of this information cannot be guaranteed, nor can the condition of the boat be warranted. This yacht is offered subject to prior sale, price change, or withdrawal from the market without notice. It is provided for the convenience of prospective buyers and should not be construed as a definitive representation or warranty of a specific yacht for sale.

CONTACTS

Shestakov Yacht Sales is a brokerage company specializing in the sale and service of yachts worldwide. The company offers services for buying and selling both new and used motor yachts, sailing vessels, and luxury superyachts. They also provide yacht registration, insurance, technical maintenance, crew selection, and charter organization services across the U.S., Canada, Latin America, the Caribbean, and the Bahamas.

The founder and lead broker of the company is Andrey Shestakov, a licensed and certified expert with extensive experience in marine engineering and shipbuilding.

The company has an extensive network of partnerships with major yacht manufacturers worldwide and provides services in multiple languages, including Russian, Ukrainian, Spanish, and English. The office is in Dania Beach, Florida, USA.

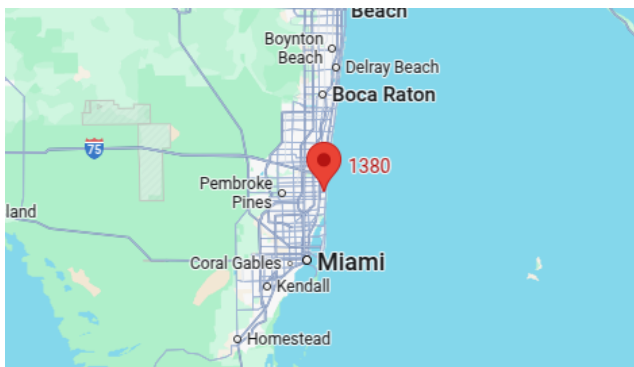
For more information and to view available yachts, you can visit the company's official website: <https://shestakovyachtsales.com>

Contact details

Phone: +1(954)274-4435

Email: andrey@shestakovyachtsales.com

Address



1380 Weeping Willow Way, Hollywood,
Florida 33019