



WHY HER - WAJER



Builder: [WAJER](#)

Beam: 14' 0" (4.37 m)

Year Built: 2024

Max Draft: 13' 1" (4 m)

Model: 55 HT

Cruising Speed: 28 Knots (32.22 MPH)

Price: \$2,950,000 USD Subject to change.

[See full listing on our website](#)

Location: Fort Lauderdale, United States

LOA: 55' 0" (16.76 m)

If you would like to buy a yacht **WHY HER - WAJER** or would like help answering any questions concerning purchasing, selling, or chartering a yacht, please call **+1(954)274-4435** or click here on <https://shestakovyachtsales.com>

TABLE OF CONTENTS

OVERVIEW	3
SPECIFICATIONS	4
Basic Information	4
Dimensions	4
Speed, Capacities and Weight	4
Accommodations	5
Hull and Deck Information	5
Engine Information	5
GALLERY	6
DETAILED DESCRIPTION	16
CONTACTS	22

OVERVIEW

The Wajer 55 HT embodies the pinnacle of Dutch shipbuilding, marrying refined aesthetics with spirited performance in a hardtop dayboat configured for all-weather comfort. Its profile — clean, taut lines and a meticulous finish — makes a striking impression both underway and while at anchor.

Designed for owners who seek equal measures of exhilaration and sanctuary, this luxury motor yacht pairs brisk speed with sheltered poise, preserving a composed passage as conditions shift — a true performance craft that also serves as a superyacht tender.

SPECIFICATIONS

Basic Information

Category:
Motor yachts

Year Built:
2024

Sub category:
Motor Yacht

Country:
United States

Model Year:
2024

Dimensions

LOA:
55' 0" (16.76 m)

Max Draft:
13' 1" (4 m)

Beam:
14' 0" (4.37 m)

Speed, Capacities and Weight

Cruise Speed:
28 Knots (32.22 MPH)

Fuel Capacity:
625 Gallons

Water Capacity:
110 Gallons

Accommodations

Total Heads:

1

Hull and Deck Information

Hull Material:

Fiberglass and Plastic Yachts

Hull Designer:

N/A

Deck Material:

Fiberglass

Interior Designer:

N/A

Hull Configuration:

N/A

Engine Information

Engines:

3

Engine Type:

Inboard

Manufacturer:

Volvo Penta

GALLERY

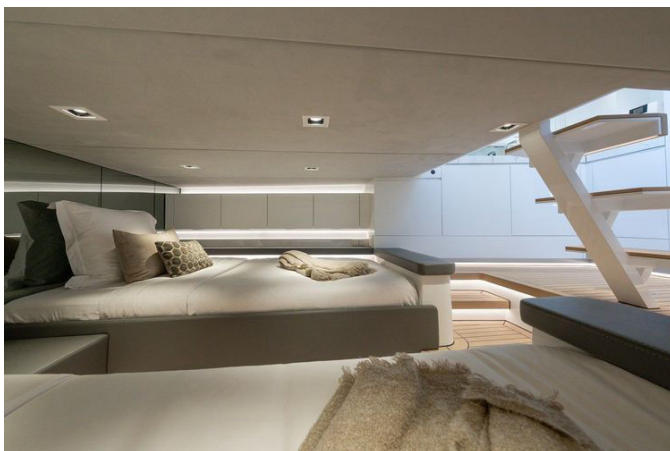


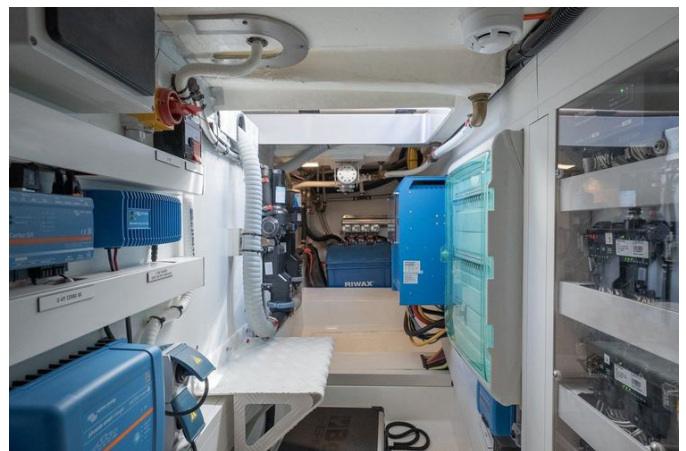


















DETAILED DESCRIPTION

Overview

This US-delivered 2024 Wajer 55 HT presents a rare opportunity to step aboard one of the most coveted modern yachts, offered turnkey, fully equipped, and ready for immediate delivery; commissioned for a US client with a dual 110V/230V electrical configuration, she records only 120 hours on her triple Volvo Penta IPS 650 D6-480 engines paired with Joystick control and a Dynamic Positioning System, while the 10kW Northern Lights generators show 180 hours, and the yacht's refined deck plan is arranged for effortless social life with a U-shaped cockpit seating group framing a dining table for al fresco meals, expansive sunbeds fore and aft for long sunlit days, and an electric hardtop sunroof to modulate shade and breeze; below deck the interior unfolds in a calm, beautifully finished manner with a spacious master cabin and welcoming guest cabin, a well-equipped galley with refrigerator, sink, induction cooktop, coffee machine and ice maker, and a fully appointed head with shower, all accentuated by premium materials and elegant lighting that create a warm, luxurious atmosphere, while advanced systems such as Joystick control, a Quick MC2-X16 gyro stabilizer, an automatic fender system, forward-facing sonar and a FLIR thermal vision camera ensure smooth, quiet, and supremely confident performance on every voyage.

Power and performance

Triple Volvo Penta IPS 650 D6-480 propulsion combined with a Dynamic Positioning System delivers authoritative thrust and fingertip Joystick control, with engines recording just 120 hours as of Feb 2026 and an extended warranty option plus major component coverage valid until 12/5/2028; built for a US client with a flexible 110V/230V set-up, the yacht benefits from a Quick

MC2X-16K gyro stabilizer that keeps her exceptionally level both underway and at rest, while practical, safety-focused features such as a push-button, remote-operated fender system that automatically inflates eight fenders and a FLIR M232 thermal vision camera enhance low-visibility confidence, and reliable auxiliary power and climate comfort are supplied by a 10kW Northern Lights genset M843NW3 and Webasto Airco S8 HVAC, with close-quarters handling supported by a bow thruster.

Navigation and performance

At the helm and on the port side a state-of-the-art Garmin suite centers on four twelve-inch touchscreens anchored by the GPSMAP 8612XSV multifunction platform, working seamlessly with the VHF 315 series, Garmin GMR Fantom 18X radar, AIS 800 transceiver and forward-facing Garmin Panoptix LiveScope sonar LVS32-TH to deliver unrivaled situational awareness; a dedicated multifunction touchscreen on the port side complements a stern camera and a powerful searchlight, while a starboard Plastimo Offshore 115 compass provides traditional bearing reference on the dashboard, and creature comforts and entertainment are integrated through a Fusion Apollo MS RA770 stereo and a removable forty-three-inch Loewe LCD at the portside helm deck supported by upgraded helm air conditioning, with the FLIR thermal vision camera further extending confident navigation by night or in challenging conditions.

Deck and exterior features

Life on deck is effortless and refined, with a foldable cockpit table clad in Flexiteek accented by graphite carbon beneath a hardtop crowned by an electric sunroof, four custom-suspended captain's chairs facing an adjustable console and a movable cockpit floor to fine-tune sightlines at speed or at

anchor, while custom handrails on the hardtop and U-shaped seating with under-seat storage and a removable backrest combine utility with elegance; a generous extendible swimming platform with adjustable height simplifies boarding and transforms the water experience, and a hydraulically operated Lewmar anchor concealed in the bow deploys from the steering console and is monitored by video for remote, effortless drop and retrieval, with an aft tender garage purpose-built for a two point five metre Talamex tender featuring automatic hydraulic release for rapid launch and recovery, integrated cleats for secure mooring, a starboard helm deck sink with storage, a removable carbon-fiber aft shower, three black ionized stainless steel mooring posts and a skylight above the main cabin that brightens the interior, while cockpit refrigeration is split between a starboard Frigoboat refrigerator and a portside cooler and a carbon flagpole adds a refined finishing touch.

Galley

The galley is designed for effortless indulgence, featuring a graphite countertop above a two-burner induction cooktop, an Isotherm BI92 refrigerator, an Electrolux ESL2500RO dishwasher, a Jura ENA8 espresso machine and an Isotherm icemaker, anchored by a Grohe sink and complemented by Flexiteek flooring with ash inlays, a central vacuum system and deep floor storage that elevate everyday practicality while maintaining a refined aesthetic.

Head

The head is appointed with a Tecma toilet featuring a bidet function paired with a Grohe shower and Grohe sink, all set against graphite flooring and a matching graphite panel top to create a cohesive, contemporary space that blends functionality with elegant simplicity.

Master cabin

The master cabin centers on a generously proportioned full bed with substantial storage beneath and a large drawer, flanked by storage cabinets each configured with five compartments and complemented by additional bulkhead cubbies; dimmable ceiling and side LED lighting sculpt the mood while Flexiteek flooring with ash inlays completes a serene, contemporary ambience ideal for relaxation after a day at sea.

Tender and toys

Purpose-built for adventure, the aft garage houses a two point five metre Talamex inflatable dinghy SLA250, paired with a Torqeedo electric outboard model 1148-00 and a spare battery, supported by a bow tow eye ready for seamless shore runs or watersports, and for carefree days at anchor two Brunotti inflatable paddleboards invite spontaneous exploration.

Interior comfort and appliances

Everyday ease is standard aboard, from the Jura ENA8 coffee machine in the galley and a Tecma toilet with bidet function to an onboard TV in the master cabin and the reassurance of fresh water on passage courtesy of the Aquamatic 450 watermaker, all combined to ensure comfort and independence on extended cruises.

Exterior custom colors

The yacht's bespoke exterior palette is striking and cohesive: hull, deck, cockpit, dashboard, console top lids, console bottom, drawers and bench are finished in Anniversary Silver M9389; console top, window frames, hardtop,

navigation wing, name and homeport are rendered in Awlgrip Extreme Black Gloss; and the boot top is defined by Traffic Black RAL9017, creating a sharply contrasted, custom look that reads both modern and timeless.

Cockpit finishes

Cockpit materials speak to durability and craftsmanship with upholstery in Silverguard SG92003 Cobre stitched with Silverguard SG94001 Plata accents, helm chair backs realized by Coverworks in high gloss carbon, exterior panels in Boxmark Royal Black 9123, ash decking with black caulking, carbon-fiber details, deck hardware in black ionized stainless steel and ceiling panels in Silverguard SG99002 Carbon, together composing a tactile, high-contrast environment engineered for both performance and refinement.

Interior finishes

The interior is a study in refined contrast with walls and doors in Altac Piano White satin framed by skirting boards in Anniversary Silver M9389, ceiling panels in Nova Suede Dove, countertops in CA 4141 Empira White Poliert, a weatherproof Flexiteek deck with a Wajar trademark slip-resistant pattern, high gloss hinges and locks, and interior panels in Boxmark Royal Granite 9134, all combining to deliver a contemporary, tactile environment that balances light tones with striking dark accents.

Covers

Protective covers are tailored to marry form and function with cockpit upholstery covers in Sunbrella Terry Beige, an aft cockpit cover in Sunbrella Plus 5032 Jet Black, windshield sunshades in TenCate WR18 Dark Grey and a forward sun lounge cover also in TenCate WR18 Dark Grey, each chosen to

protect finishes while maintaining the yacht's cohesive aesthetic.

CONTACTS

Shestakov Yacht Sales is a brokerage company specializing in the sale and service of yachts worldwide. The company offers services for buying and selling both new and used motor yachts, sailing vessels, and luxury superyachts. They also provide yacht registration, insurance, technical maintenance, crew selection, and charter organization services across the U.S., Canada, Latin America, the Caribbean, and the Bahamas.

The founder and lead broker of the company is Andrey Shestakov, a licensed and certified expert with extensive experience in marine engineering and shipbuilding.

The company has an extensive network of partnerships with major yacht manufacturers worldwide and provides services in multiple languages, including Russian, Ukrainian, Spanish, and English. The office is in Dania Beach, Florida, USA.

For more information and to view available yachts, you can visit the company's official website: <https://shestakovyachtsales.com>

Contact details

Phone: +1(954)274-4435

Email: andrey@shestakovyachtsales.com

Address



1380 Weeping Willow Way, Hollywood,
Florida 33019