

SCANDALOSO - VIKING



Builder: [VIKING](#)

Beam: 18' 0" (5.49 m)

Year Built: 2006

Max Draft: 13' 1" (4 m)

Model: 56 CONVERTIBLE

Price: \$1,049,000 USD Subject to change.

[See full listing on our website](#)

Location: Playa Herradura, Costa Rica

LOA: 56' 0" (17.07 m)

TABLE OF CONTENTS

OVERVIEW	3
SPECIFICATIONS	4
Basic Information	4
Dimensions	4
Speed, Capacities and Weight	4
Accommodations	4
Hull and Deck Information	5
Engine Information	5
GALLERY	6
DETAILED DESCRIPTION	24
CONTACTS	35

OVERVIEW

An exceptional Costa Rica opportunity, the 2006 Viking 56 Convertible Scandaloso arrives fully prepared and immediately usable, having benefited from an extensive 2020 exterior repaint, newly installed teak on the cockpit sole, a bespoke tuna tube arrangement, updated Garmin navigation, and the addition of a mezzanine among a host of refinements. Impeccably maintained, she carries an impressive sportfishing lineage and a demonstrated ability to produce results on the grounds.

A program of mechanical and electronic upgrades has been carried out with careful attention to detail: in September 2022 she received a Furuno Omnisonar, new turbos, refreshed engine hoses, replacement oil pan gaskets and circulation pumps, together with generator servicing and a main seal replacement. January 2023 brought Krypto Quiet shaft bearings, a new flybridge enclosure, a Seatronix SRT 17 inch sonar monitor, premium JL Audio speakers with dedicated amplifiers and a Fusion Apollo stereo head unit. Subsequent works include new engine mounts with full alignment in March 2023, installation of an oil change pump in April 2023, and the addition of Starlink satellite communications in August 2023. In October 2023 she was fitted with Newmar battery chargers and 23 foot Comrod VHF antennas, followed by propeller tuning and replacement of AC controllers in January 2024. Further 2024 enhancements encompass a Garmin GHC 50 autopilot, engine alignment, two ICOM M510 VHF sets, a new port alternator, and both watermaker and air conditioning service, and she received new batteries in November 2024. Based in Los Sueños, Costa Rica, Scandaloso is comprehensively equipped and poised for either serious sportfishing or refined cruising today.

SPECIFICATIONS

Basic Information

Model Year:
2006

Country:
Costa Rica

Year Built:
2006

Dimensions

LOA:
56' 0" (17.07 m)

Max Draft:
13' 1" (4 m)

Beam:
18' 0" (5.49 m)

Speed, Capacities and Weight

Water Capacity:
240 Gallons

Fuel Capacity:
1700 Gallons

Accommodations

Total Heads:
3

Hull and Deck Information

Hull Material:

Fiberglass and Plastic Yachts

Hull Designer:

N/A

Deck Material:

Fiberglass

Interior Designer:

N/A

Hull Configuration:

N/A

Engine Information

Engines:

2

Engine Type:

Inboard

Manufacturer:

MTU

Fuel Type:

Diesel

GALLERY





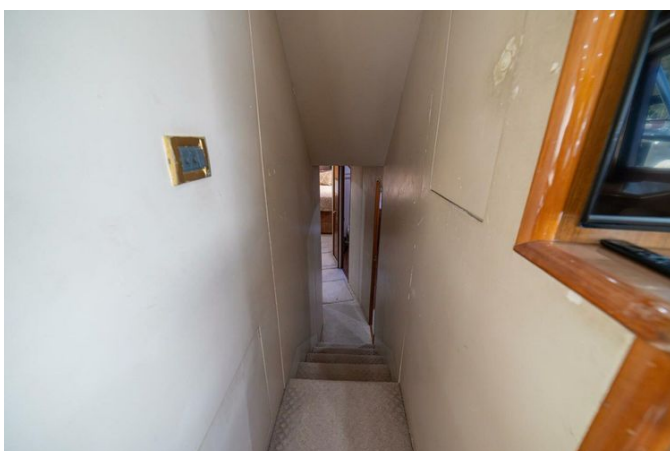








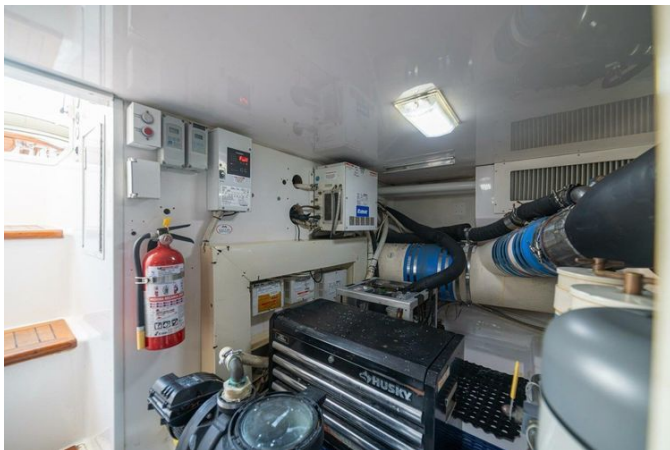


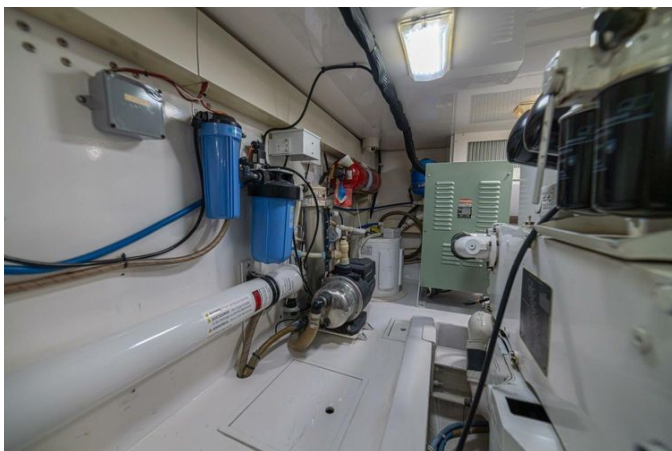
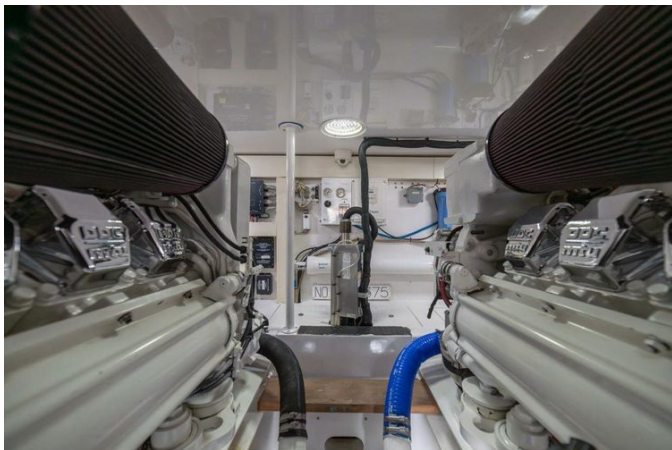






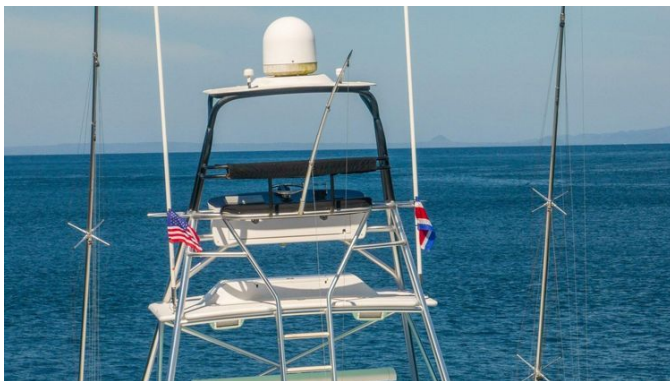




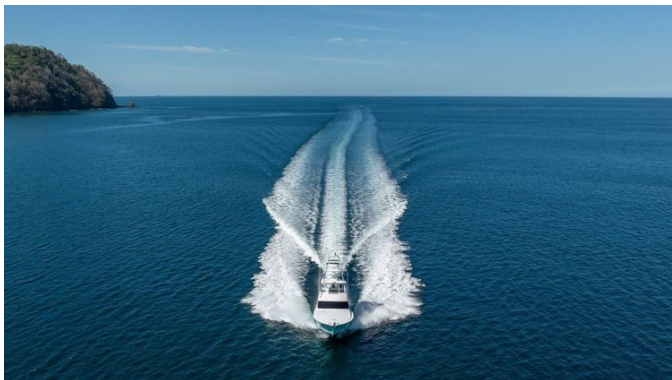












DETAILED DESCRIPTION

Latest upgrades

Regularly serviced and elegantly updated, this yacht has received an extensive program of mechanical, electrical and comfort enhancements over recent years. In September 2022 a Furuno Onmi Sonar was installed alongside four turbos, new engine hoses, oil pan gaskets and water pumps, while the generator underwent a complete service that included replacement of the main seal. January 2023 brought Krypto Quiet bearings, a new flybridge enclosure and a Seatronix SRT 17" sonar display, together with upgraded entertainment components: JL Audio speakers and amplifiers and a Fusion Apollo stereo head unit. Early 2023 continued with new engine mounts and alignment in March and, in April, the addition of a dedicated oil-change pump; by August 2023 Starlink connectivity had been integrated and a custom cockpit cover was added in September. Reliability and systems robustness were furthered in October 2023 with Newmar PT-24-95U and PT-24-45U battery chargers, Comrod 23' VHF antennas and a new dryer. The navigation and climate systems received attention in January 2024 with new AC controllers and a Garmin GHC 50 autopilot, engine alignment was refined in February 2024, two ICOM M510 VHF radios were fitted in March 2024 and the port alternator was replaced in April 2024. A new water maker membrane was installed in September 2024, fresh batteries were added in November 2024, and in April 2025 the AC system and pump were serviced, new rudder bearings were fitted and nonskid was applied to the bow deck. Rounding out the onboard comforts is a new 50" Samsung TV.

Walk-thru

Arranged with three staterooms and two heads, this yacht feels remarkably

spacious and delivers a superb ride in varying sea conditions. The Salon, Dinette and Galley are fitted with today's desirable appointments, including a generous 42-inch flat-screen TV, an exceptional sound system and sumptuous seating throughout, while the galley is equipped with six Sub Zero cold-drawer units — four refrigerator drawers and two freezer drawers — for ample chilled storage. The master stateroom to port boasts a queen berth set athwartship with storage beneath, a built-in television, two hanging lockers and an en suite head featuring a large stall shower. Forward, a centerline queen provides storage below, its own built-in TV and plentiful stowage, and the starboard cabin offers crisscross bunks with abundant storage and open floor space; the forward and starboard staterooms share the starboard head, which is appointed with a shower stall.

General features and updates

Designed for serious offshore performance without sacrificing comfort, this yacht arrives fully outfitted with a Furuno Omni sonar and three Garmin 8617 displays at the helm, augmented by an Airmar CHIRP transducer installed in 2019. A comprehensive electronics package including SAT-TV and SAT phone, together with Starlink, ensures reliable communications and entertainment wherever you cruise. Propulsion is provided by MTU Series 2000 V12 M91 engines rated at 1,520 MHP, backed by a new generator fitted in 2014; hull-mounted prop pockets reduce draft, an extra factory fuel tank extends range, spare propellers are carried aboard, and the props were precisely tuned and aligned in 2024. The boat's deck equipment creates a commanding fishing platform with a custom Bausch tower, Rupp outriggers and a center rigger, Release helm chairs with footrests set over a teak-finished area, and a cockpit mezzanine for both ease of operation and guest comfort. Angling provisions are extensive and thoughtfully integrated, from custom built-in tuna tubes and an Eskimo ice chipper to dual livewells located in the sole and transom, a

watermaker, two plus two arrangement of underwater lights, and a new ice maker installed in 2021. Recent refits and finishing details include a full paint job completed in 2019–2020 with a distinctive Sea Foam Green hull and matching undersides on the hardtop and buggy top; the cockpit features a teak sole and covering boards with a new teak sole added in 2020 and custom coaming boards fitted in 2019, along with teak steps to the engine room and a teak transom. Interior and exterior illumination was modernized with LED lighting and LED floodlights finished in 2020, new carpet was installed in 2019, and accommodations are appointed for luxury cruising with an island queen forward stateroom, granite galley countertops, televisions in every stateroom, and an electric salon door.

Cockpit

The cockpit has undergone a meticulous refresh, featuring a full repaint completed between 2019 and 2020, a new teak sole installed in 2020 and custom combing boards added in 2019. Evening and night operations are enhanced by LED floodlights fitted in 2020, with coordinated LED lighting for both interior and exterior spaces installed the same year for consistent, elegant illumination. The fishing outfit is thoughtfully appointed with built-in tuna tubes, a rocket launcher, Rupp outriggers and a center rigger, supported by two livewells—one in the sole and one in the transom—to maintain premium bait management. Comfort and craftsmanship meet in the air-conditioned cockpit mezzanine, the teak cockpit sole with matching covering boards, teak steps down to the engine room and a richly finished teak transom. Performance details include prop pockets to reduce draft and a 2+2 underwater light arrangement that casts dramatic light beneath the surface.

Salon

The salon is finished throughout in high-gloss teak cabinetry and paneling, with teak valances and lambrequins upholstered in custom fabric and accented with teak trim, creating an elevated Premiere Edition décor. Natural light is tempered by Hunter-Douglas silhouette shades, and ambience is easily tailored with dimmers on the overhead low-voltage AC lights. An automatic electric salon door system welcomes you aboard, and the main electrical panel is located up for convenient access.

To port an L-shaped lounge provides generous seating with substantial storage beneath the cushions, while opposite the salon sofa has been upgraded in Ultraleather with armrests for added refinement. Entertaining is effortless with a 42-inch plasma TV mounted above the dinette, a teak dinette table on a teak pedestal with a teak base ring, and a teak cocktail table featuring a hi-low system. Climate control is delivered quietly and precisely by CruiseAir with SMX digital control; beyond the salon the yacht's accommodations include an island queen forward stateroom, a galley appointed with granite countertops, and a TV in every stateroom.

Galley

This galley is equipped with an under counter Sub Zero refrigerator offering four drawers alongside a dedicated two drawer freezer, and culinary amenities include a four burner Kenyon electric range with fan and a Sharp microwave/convection oven with carousel. Trash and food waste are handled by an Insinkerator garbage disposal, while high gloss teak cabinetry with slide out drawers and granite countertops lend a refined, sumptuous feel to the workspace. Practical conveniences include a water tank gauge, a purpose mounted light beneath the forward cabinetry, and a 110V outlet installed on the underside of the upper cabinet above the sink. Durable Amtico

flooring provides a resilient surface underfoot, and above the forward galley counter are four large, deep pullout storage drawers, the topmost featuring a Plexi see through bottom for easy, immediate visibility.

Companionway

A generous concealed storage compartment sits behind the flat-screen television, preserving the companionway's clean, uninterrupted lines while adding substantial stowage capacity. Overhead low-voltage AC lighting, fitted with dimmer controls, lets you soften or brighten the atmosphere with ease, and an integrated central vacuum system makes cleaning effortless. A tailored carpet runner with protective step covers guards high-traffic routes, complemented by wrapped hatch carpet installations that provide a seamless, refined finish, while additional storage beneath the steps ensures every available inch is used to advantage.

Master Stateroom

Located down to port, the master stateroom marries refined luxury with clever functionality, centered on an athwartship queen bed appointed with an upgraded mattress and set on a lift up platform that uncovers substantial under berth storage alongside two dedicated drawers. The space is softened by warm, indirect illumination and dimmers on the overhead low voltage AC lights, while bespoke wallcoverings and curated artwork contribute to a sophisticated ambiance. Entertainment is discreet yet complete with a 20 inch Sharp Aquos flat screen TV and a DVD player, and teak topped end tables flank the berth, each fitted with direct wired lamps for both style and convenience. Climate comfort is precisely managed by CruiseAir with SMX digital control, and an overhead hatch equipped with an integrated screen and blackout shade allows for natural light or total privacy. Storage is generous and

well considered, with two large hanging lockers aft behind bronze mirrored double doors, a port storage cabinet with three drawers, and a built-in rod storage system incorporated into the closet.

Master stateroom head

Brass faucets and shower fittings lend a warm, classic sheen throughout, accented by solid brass towel bars and rings that reinforce the room's bespoke detailing. The vanity combines a teak-faced lower cabinet with convenient storage beneath the sink and an upper insert bordered by a framed mirror, all set beneath a sleek Corian countertop. A floor-to-ceiling linen closet provides generous organization, while custom wallpaper establishes a quietly sophisticated ambiance paired with resilient, specially fitted Amtico flooring. The enclosed stall shower delivers private comfort, and the suite is finished with a full-size Magnum Opus Vacuflush head for complete, thoughtful convenience.

Forward guest stateroom

A Sharp Aquos 15-inch flat-screen TV greets you as you enter the forward guest stateroom, where a centerline queen bed outfitted with an upgraded mattress provides sumptuous rest and conceals two storage drawers below as well as further space beneath a lift-up platform. An overhead hatch fitted with an integrated screen and blackout shade introduces natural light and ventilation on demand, while a hanging locker to port and numerous storage cabinets keep personal effects orderly. Climate comfort is delivered by CruiseAir air conditioning with SMX digital control, and audio is distributed through built-in stereo speakers. The lighting scheme includes overhead reading lamps and dimmers for the low-voltage AC overhead lights so you can set the mood, and the suite is completed with custom wallpaper and curated

artwork for an elegant finishing touch.

Starboard guest stateroom

Finished with a bespoke wallpaper installation, this welcoming stateroom offers stacked upper and lower bunks appointed with orthopedic mattresses and discreet storage beneath the lower berth. An overhead hatch equipped with an integrated screen and blackout shade provides added privacy and adjustable ventilation, while onboard entertainment is delivered through a fifteen-inch Sharp Aquos flat-screen TV and a set of stereo speakers. A teak-topped locker introduces a polished, nautical accent, and comfort is maintained by CruiseAir climate control with SMX digital control, with the overhead low-voltage lighting softened by dimmers for an intimate ambiance.

Guest head

Meticulously finished, the guest head showcases warm brass fixtures and a mirror that encircles the upper vanity insert, alongside a dedicated stall shower designed for effortless daily use. A full-sized Vacuflush Magnum Opus head reinforces the space's residential comfort, while resilient Amtico flooring, bespoke wallpaper and curated artwork establish a quietly refined atmosphere. Practical luxury continues with a Corian vanity countertop and a timeless teak-faced lower vanity, and for added convenience a full-sized washer and dryer are discreetly housed in their own closet.

Engine room

The engine room is finished throughout in Awlgrip and houses twin MTU Series 2000 V12 M91 engines, each rated at 1,500 MHP, alongside a Northern Lights 20 kW generator installed in 2014. A dedicated oil change system with a service

line routed to the cockpit box simplifies routine maintenance, while 24V fuel priming pumps, dual fuel filters, a voltage stabilizer transformer, an isolation transformer and a Charles Smart Boost unit ensure dependable electrical and fuel system performance. Serviceability is a priority, with Awlgrip-coated brass thru-hulls and sea strainers, snow-white fuel filters and all pumps finished in snow white, and batteries secured neatly in fiberglass boxes. Airflow and noise control are refined by a Delta T air make-up system and a gas water separator for the generator, and onboard monitoring is enhanced with three cameras. Practical systems include Y-valve emergency bilge pumps, dual power steering pumps, a 110V outlet on the aft bulkhead at the entranceway, and an additional forward fuel tank for a total of three tanks. For extended cruising and fishing capability, an Eskimo ice chipper and a new ice maker installed in 2021 are complemented by a Sea Recovery watermaker producing 1,200 GPD with a remote in the salon, and all bilges, the lazarette and the anchor locker are Awlgrip painted for a clean, long-lasting finish.

Flybridge

Dominating the profile with panoramic sightlines and considered engineering, the flybridge is sheltered beneath a fiberglass hardtop whose underside is painted to mirror the hull and which is enclosed on three sides using track-to-track fittings; the EZ2CY front panels were renewed in 2023 and zippered vents along the tops of the front and side panels allow controlled ventilation. The installation is executed with no exposed fasteners, while handrails sweep around the forward edge of the bridge and an L-shaped rail beneath the hardtop offers secure passage. The helm is arranged around a pod with single-lever controls, supported by power-assisted steering and complemented by trim tab controls, fuel gauges and electronic trolling valves for refined handling, and a drop-down overhead locker houses engine monitors for immediate system readouts. Recessed electronics lockers with

push-knob catches keep the console clean and uncluttered, and the bridge is fitted with a VHF ICOM-510, a Fusion stereo with Bluetooth, a Ritchie Powerdamp compass, an ACR Global Fix EPIRB, Rupp antenna standoffs and a 24V remote spotlight to enhance communication and visibility. Fishing amenities include recessed Miya Epoch US9 teaser reels and six-rod rocket launchers, with rod storage neatly stowed beneath both bench seats. Comfort and style are provided by Release helm chairs with teak ladder backs and teak footrests mounted on a custom teak sole at the helm, an L-shaped lounge forward, a starboard bench with integrated storage and a removable backrest for the starboard jump seat, plus additional storage tucked beneath the eyebrow area; a drink box with a freshwater outlet sits conveniently within reach. For further specification details, refer to the Custom Tower section, and the audio environment is completed by stereo speakers—two forward and two aft.

Electronics

An expertly integrated electronics ensemble begins with a Furuno Omni Sonar matched to a Garmin 25 kW radar, with navigation and sensor data presented on three Garmin 8617 displays at the primary helm and a Garmin 8412 in the tower for intuitive command from either station. Sub-surface definition is sharpened by a 3 kW Airmar CHIRP transducer installed in 2019, and the navigation package is further reinforced by a Furuno FAP-511 NavPilot. Communications are handled by two Icom VHF radios, while high-speed online access is provided via Starlink. Satellite television is delivered by a KVH TVG4-HP 18-inch dish feeding a Direct TV H-20 receiver through a Spaun SM3403-NF amplified multiswitch, with an APC 350 UPS safeguarding the system. An IR remote system is wired for the salon and master stateroom, completing a turnkey electronics suite with full SAT-TV and SAT phone capability.

Hull and decks

A striking black mask with a forward eyebrow frames the Sea Foam Green hull, while a rub rail painted to match the gelcoat provides a seamless, refined finish. At the bow a Lewmar V4SS windlass is fitted with 50 feet of chain and 400 feet of line and is paired with a plough-style anchor; a freshwater washdown is thoughtfully located inside the anchor locker for easy maintenance. Safety equipment includes a Revere Commander 3.0 six-person life raft. Deck functionality is elevated by a sliding fender track that runs from the transom to the end of the cabin and by overhead railings extended to eighteen inches on both the port and starboard sides. Xeon underwater lights — two aft and two down — create a dramatic nocturnal presence. Practical performance and protection features include oval exhaust outlets, fiberglass thru-hulls with dedicated fiberglass side thru-hulls, prop pockets designed to reduce draft, an additional factory fuel tank, and spare propellers stowed aboard to keep you cruising without interruption.

Tuna tower

A custom Bausch Towers tuna tower crowns the yacht, reached by a center ladder with port and starboard extensions for effortless access. Quartz lights are molded into the tower platform—two aft and one forward—casting crisp illumination across the decks. The buggy top and control box are finished in a sophisticated black pipe, while the buggy top's underside is painted to match the hull and fitted with two overhead lights to ensure nighttime clarity. A bench seat draped in a black cover provides comfort aloft, paired with a dedicated stereo and separate speakers to deliver an immersive soundtrack underway. The upper helm offers precise command with black engine controls, a steering wheel with speed knob, an ICOM Command Mic II, Furuno Navnet electronics, and a compass. For the avid angler there are three rod holders on each tower

leg, a center rigger, and Rupp triple spreader outriggers with cameras, all reinforced by Rupp standoffs. A freshwater washdown completes the arrangement, keeping the tower and decks spotless between strikes.

CONTACTS

Shestakov Yacht Sales is a brokerage company specializing in the sale and service of yachts worldwide. The company offers services for buying and selling both new and used motor yachts, sailing vessels, and luxury superyachts. They also provide yacht registration, insurance, technical maintenance, crew selection, and charter organization services across the U.S., Canada, Latin America, the Caribbean, and the Bahamas.

The founder and lead broker of the company is Andrey Shestakov, a licensed and certified expert with extensive experience in marine engineering and shipbuilding.

The company has an extensive network of partnerships with major yacht manufacturers worldwide and provides services in multiple languages, including Russian, Ukrainian, Spanish, and English. The office is in Dania Beach, Florida, USA.

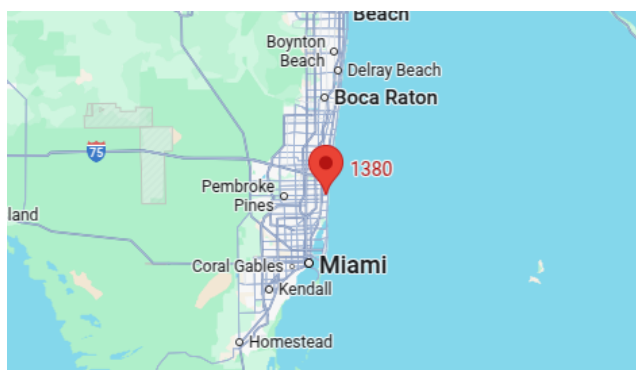
For more information and to view available yachts, you can visit the company's official website: <https://shestakovyachtsales.com>

Contact details

Phone: +1(954)274-4435

Email: andrey@shestakovyachtsales.com

Address



1380 Weeping Willow Way, Hollywood,
Florida 33019