

## MAHI DREAM - LYDIA YACHTS



**Builder:**

[LYDIA YACHTS](#)

**Year Built:**

1990

**Model:**

Sportfisherman

**Price:**

[See on website](#)

**Location:**

Fort Lauderdale, United States

**Max Speed:**

30 Knots (34.52 MPH)

**LOA:**

56' 0" (17.07 mm)

**Beam:**

16' 0" (4.95 mm)

**Min Draft:**

16' 2" (4.9166 mm)

**Max Draft:**

16' 8" (5.0833 mm)

**Cruising Speed:**

25 Knots (28.77 MPH)

---

# TABLE OF CONTENTS

---

**Overview ..... 3**

**Specifications ..... 4**

    Basic Information ..... 4

    Dimensions ..... 4

    Speed, Capacities and Weight ..... 4

    Accommodations ..... 5

    Hull and Deck Information ..... 5

**Gallery ..... 6**

**Contacts ..... 30**

## OVERVIEW

---

Crafted by T+D Industries, with a possible link to Lydia Yachts of Stuart, Florida, the exquisite MAHI DREAM underwent a significant upgrade in 2003, replacing her original Detroit Diesel 12V71 TI engines with powerful 1150 hp MTU 12V183s.

A comprehensive renovation completed in 2005 saw the skilled artisans at Rybovich elevate her interior joinery to an exceptional level of craftsmanship. Further enhancements included the installation of a new single fuel tank and a refreshed cockpit floor around 2019.

Conveniently located in Ft. Lauderdale, FL, this yacht is a prime opportunity for those looking to buy a yacht. Explore yacht sales in the current boat location and seize the chance to own this remarkable vessel.

# SPECIFICATIONS

---

## Basic Information

---

**Category:**  
Motor yachts

**Sub category:**  
Sport Fisherman

**Model Year:**  
1991

**Year Built:**  
1990

**Country:**  
United States

## Dimensions

---

**LOA:**  
56' 0" (17.07 mm)

**Min Draft:**  
16' 2" (4.9166 mm)

**Beam:**  
16

**Max Draft:**  
16' 8" (16.677 mm)

## Speed, Capacities and Weight

---

**Cruise Speed:**  
25 Knots (28.77 MPH)

**Cruise Speed Range:**  
0 Kts.

**Max Speed:**  
30 Knots (34.52 MPH)

**Max Speed Range:**  
0 Kts.

**Gross Tonnage:**  
0 Pounds

**Water Capacity:**  
400 Gallons.

**Holding Tank:**  
0 Gallons

**Fuel Capacity:**  
1450 Gallons

## Accommodations

---

**Total Cabins:**

—

**Total Berths:**

—

**Sleeps:**

0

**Total Heads:**

2

**Crew Cabin:**

0

**Crew Berths:**

0

**Crew Heads:**

—

## Hull and Deck Information

---

**Hull Material:**

Fiberglass and Plastic Yachts

**Deck Material:**

Fiberglass

**Hull Configuration:**

Deep Vee

**Hull Designer:**

Lydia Yachts

**Interior Designer:**

N/A

## Engine Information

---

**Engines:**

2

**Manufacturer:**

MTU

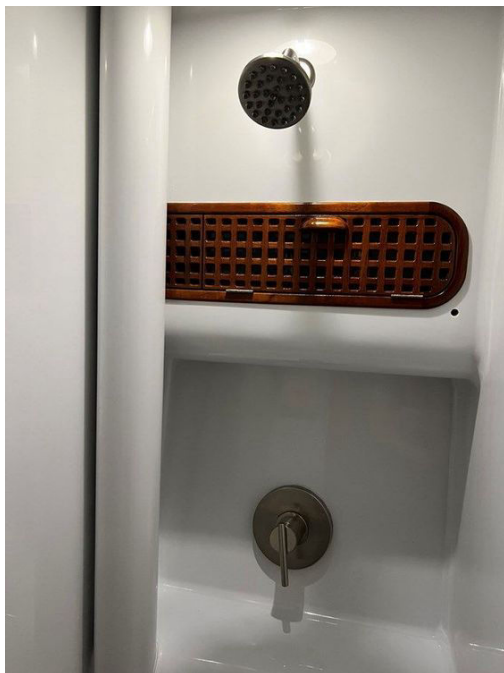
**Engine Type:**

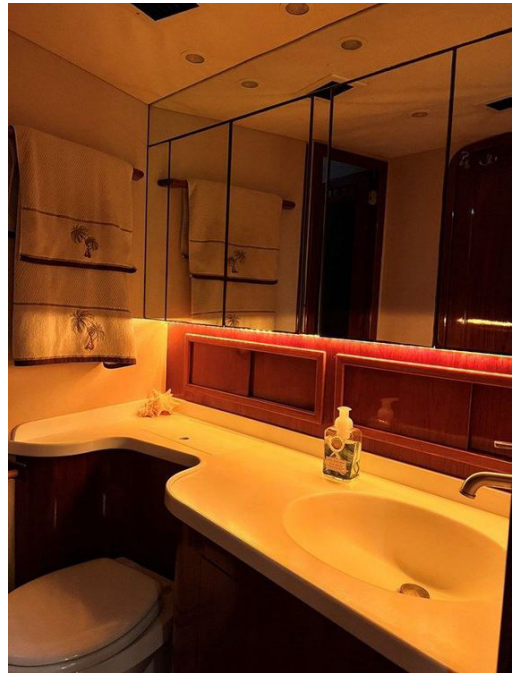
Inboard

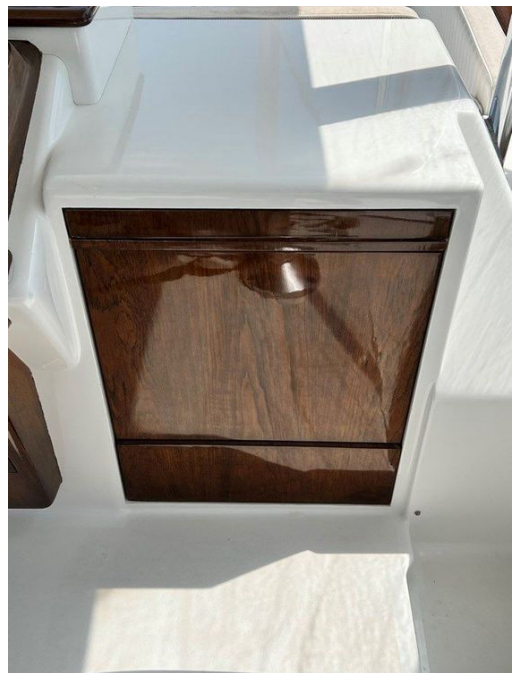
**Fuel Type:**

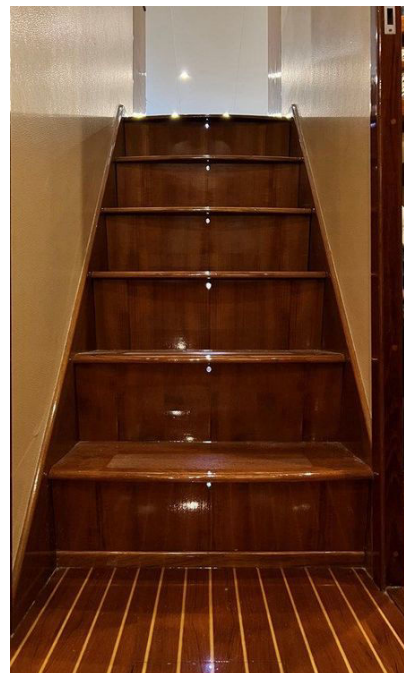
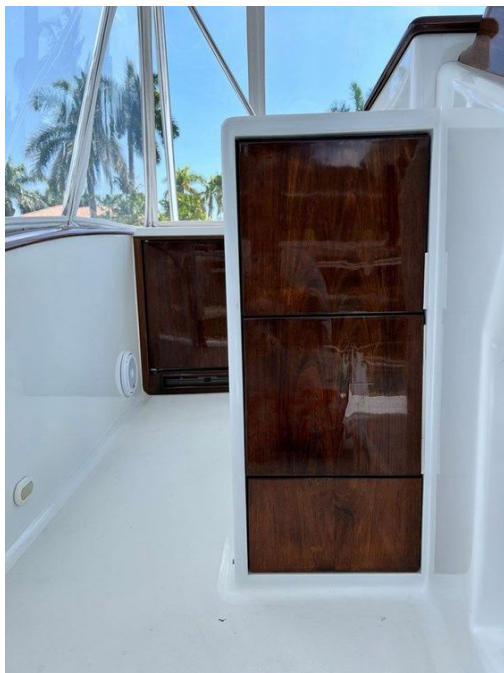
Diesel

# GALLERY



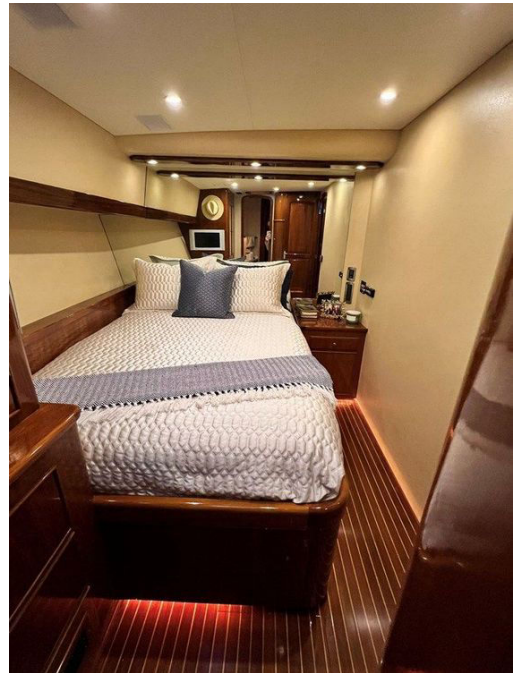












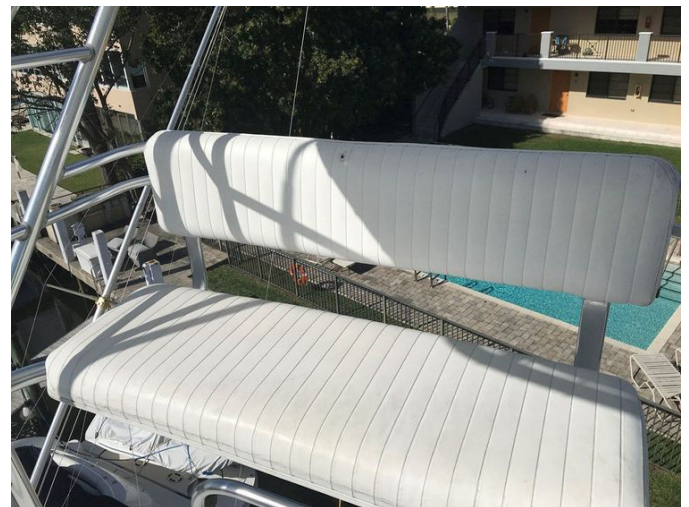










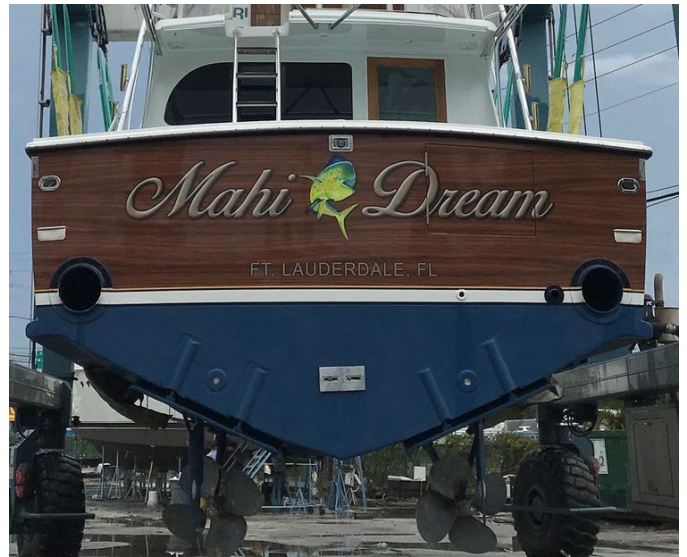


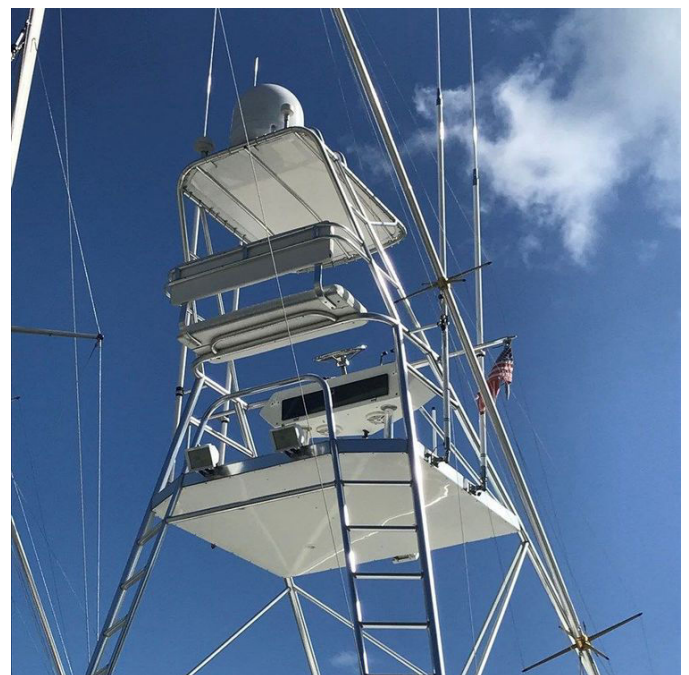
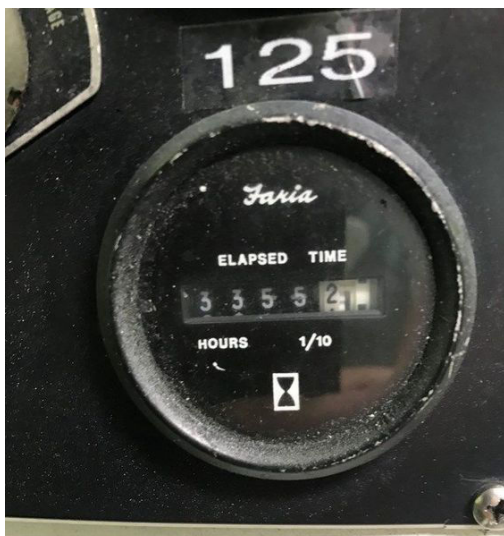




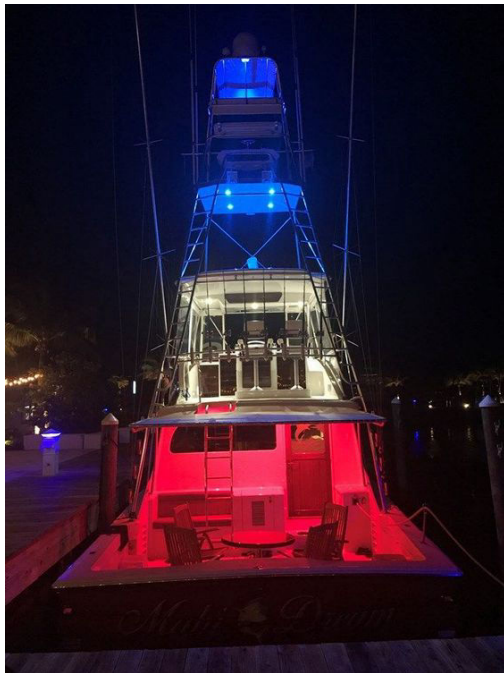


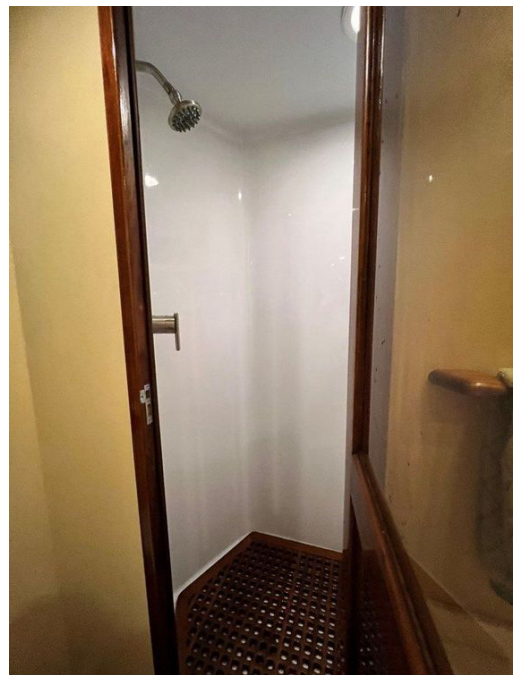


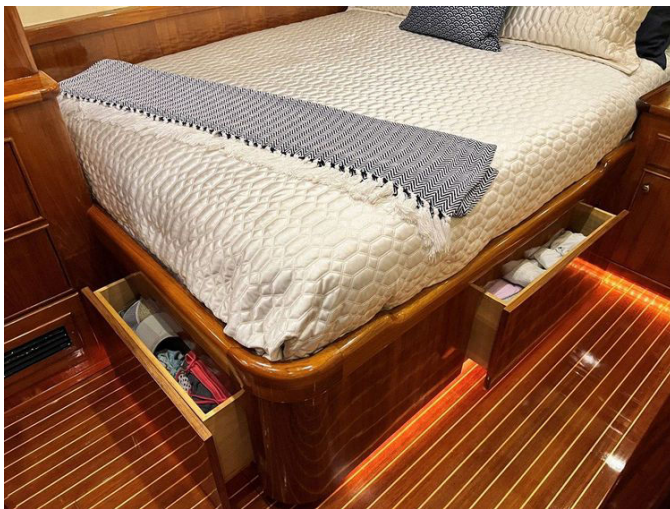














# CONTACTS

---

Shestakov Yacht Sales is a brokerage company specializing in the sale and service of yachts worldwide. The company offers services for buying and selling both new and used motor yachts, sailing vessels, and luxury superyachts. They also provide yacht registration, insurance, technical maintenance, crew selection, and charter organization services across the U.S., Canada, Latin America, the Caribbean, and the Bahamas.

The founder and lead broker of the company is Andrey Shestakov, a licensed and certified expert with extensive experience in marine engineering and shipbuilding.

The company has an extensive network of partnerships with major yacht manufacturers worldwide and provides services in multiple languages, including Russian, Ukrainian, Spanish, and English. The office is in Dania Beach, Florida, USA.

For more information and to view available yachts, you can visit the company's official website: <https://shestakovyachtsales.com>

## Contact details

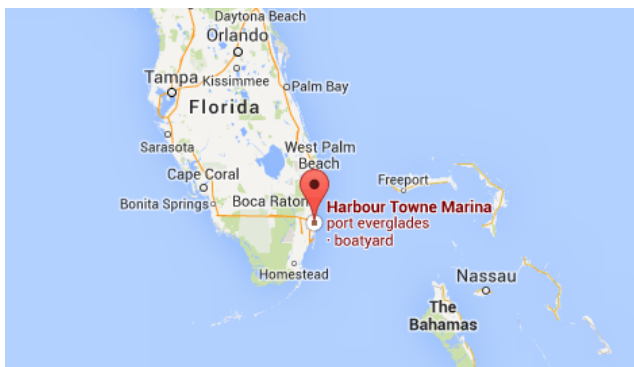
---

**Phone:** +1(954)274-4435

**Email:** [andrey@shestakovyachtsales.com](mailto:andrey@shestakovyachtsales.com)

## Address

---



Harbour Towne Marina, 850 NE 3rd St,  
STE 213,  
Dania, FL 33004