

## MANHATTAN 56 - SUNSEEKER



**Builder:** [Sunseeker](#)

**LOA:** 56' 0" (17.07 m)

**Year Built:** 2027

**Beam:** 16' 0" (4.88 m)

**Model:** Manhattan 56

**Max Draft:** 14' 9" (4.50 m)

**Price:** - Subject to change.

[See full listing on our website](#)

**Location:** Fort Lauderdale, United States

**Max Speed:** 32 Knots (36.83 MPH)

---

# TABLE OF CONTENTS

---

<b>OVERVIEW .....</b>	<b>3</b>
<b>SPECIFICATIONS .....</b>	<b>4</b>
Basic Information .....	4
Dimensions .....	4
Speed, Capacities and Weight .....	4
Accommodations .....	5
Hull and Deck Information .....	5
Engine Information .....	5
<b>GALLERY .....</b>	<b>6</b>
<b>DETAILED DESCRIPTION .....</b>	<b>12</b>
<b>CONTACTS .....</b>	<b>15</b>

## OVERVIEW

---

The 2026 Manhattan 56 presents a poised new silhouette, its lean, contemporary lines and sweeping surfaces evoking both strength and elegance. A continuous sweep of main-deck glazing traces the side, flooding the interior with daylight and reinforcing a seamless dialogue with the sea. Debuting Sunseeker's latest exterior upholstery palette, the yacht reveals crisp tailoring, refined piping and meticulous stitchwork—a polished finish that celebrates exceptional British craft, marrying long-lasting durability with the quiet, luxurious detailing expected of a premium flybridge motor yacht.

Aft, the cockpit has been completely reimaged into an adaptable social hub where form follows function with effortless style. Modular seating shifts smoothly from alfresco dining to a relaxed lounge or a broad, full-beam sunpad, delivering superb flexibility for entertaining or repose. That open arrangement flows directly to the swim platform and Beach Club, creating an inviting waterside sanctuary that enhances life on the water for both luxury motor yacht enjoyment and serious bluewater cruising.

True to the Manhattan lineage, the Manhattan 56 pairs assured performance with dependable seakeeping. Driven by twin Volvo Penta D13-800 engines, she settles into an easy 25-knot cruise, offers a range of up to 230 nautical miles at 21 knots and can surge to approximately 32 knots at full throttle, embodying the composure of a performance cruiser.

Built upon a proven hull and tuned for responsive handling, with layouts arranged thoughtfully throughout, the Manhattan 56 remains committed to owner-friendly practicality. It delivers capability with poise and the distinctive Sunseeker character of a world-class flybridge yacht and discerning family yacht.

# SPECIFICATIONS

---

## Basic Information

---

**Category:**  
Motor yachts

**Year Built:**  
2027

**Sub category:**  
Motor Yacht

**Country:**  
United States

**Model Year:**  
2027

## Dimensions

---

**LOA:**  
56' 0" (17.07 m)

**Max Draft:**  
14' 9" (4.50 m)

**Beam:**  
16' 0" (4.88 m)

## Speed, Capacities and Weight

---

**Max Speed:**  
32 Knots (36.83 MPH)

**Fuel Capacity:**  
580 Gallons

**Water Capacity:**  
158 Gallons

## Accommodations

---

**Total Heads:**

2

**Crew Cabin:**

1

## Hull and Deck Information

---

**Hull Material:**

Fiberglass and Plastic Yachts

**Hull Designer:**

N/A

**Deck Material:**

Fiberglass

**Interior Designer:**

N/A

**Hull Configuration:**

N/A

## Engine Information

---

**Engines:**

2

**Engine Type:**

Inboard

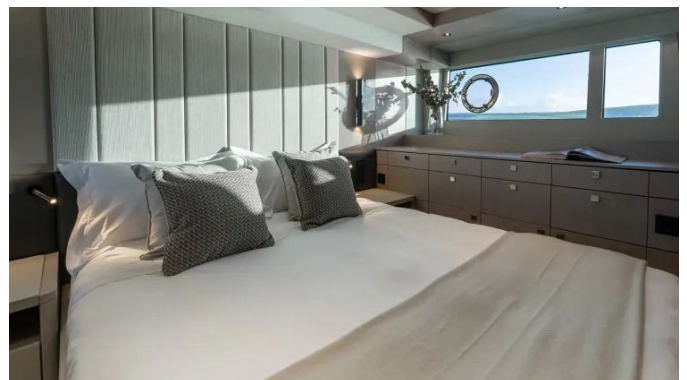
**Manufacturer:**

MAN

**Fuel Type:**

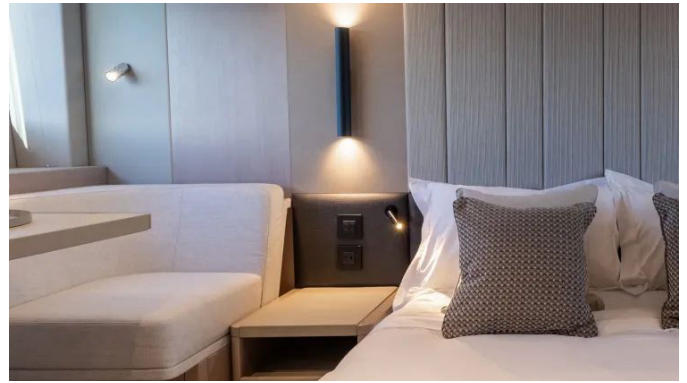
Diesel

# GALLERY

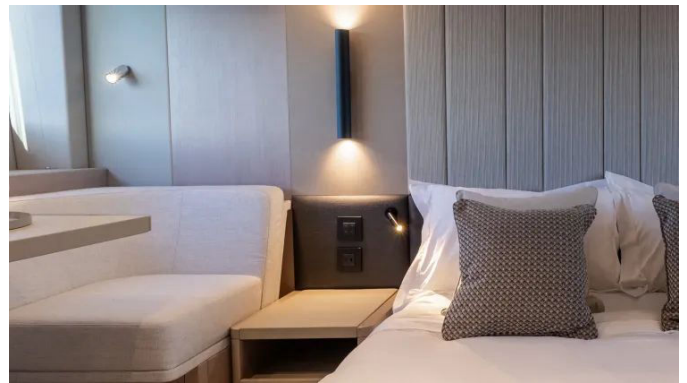
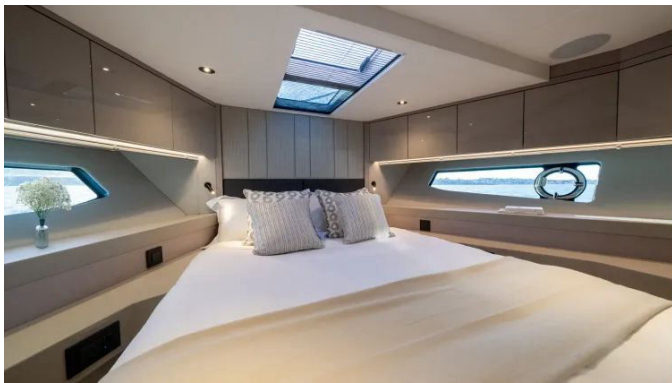












---

# DETAILED DESCRIPTION

---

## Factory installed options

---

Curated for effortless cruising and purposeful elegance, this yacht arrives with a suite of factory-installed enhancements that elevate capability and comfort, beginning with an upgraded ground tackle comprising a Lewmar 25 kg stainless steel Delta anchor served by 60 metres of 9.5 mm stainless-steel chain and augmented by an additional pair of 10-inch oval mooring spring cleats at the aft edge of the hull band and a pair of retractable tender cleats on the port and starboard platform corners to simplify close-quarters handling; the hydraulically lifting platform offers a maximum lift capacity of 450 kg, with a tender maximum of 150 kg if a gyro is specified, and the platform also benefits from an overhead shower fitted to the gull wing door. On the flybridge, practicality meets panache with an additional AC 110 V double socket positioned in the wet bar, a comprehensive Protective Covers Package that shields the general seating, sunbed, table, helm seats, and wet bar, and a hardtop whose top, sides, undersides, and rear canopy are sprayed Jet Black while the radar scanner is finished in LSA Jet Black and the radar chair equipment, including VHF whip aerials, is sprayed Jet Black as well, all supplied with no warranty offered; above, a retractable centre canopy invites adaptable shade while folding backrests at the bow transform the seating group from social lounge to sun-soaked recline. Navigation and awareness are amplified by the Garmin GMR 434 xHD3 four-foot open array radar with a 72 nm range and by two Garmin GPSMAP 9013 multifunctional colour chartplotter displays on the lower console, and comfort is thoughtfully addressed with 6000 BTU air conditioning in the crew cabin, sprung mattresses for all beds, and an aft-facing upholstered cockpit seat resting on a durable glass-reinforced plastic base. Interior ambiance is tuned by dimmer switches on interior and exterior

overhead lighting and by medium-tinted film applied to the side windows and sliding doors, while the galley is refined and ready with an integrated slimline dishwasher, a wine cooler for 32 bottles in the bar and optional second freezer and refrigerator drawers totaling 144 litres. Interior finishes are elevated to Interior Wood – Band Two with a curated choice of Flamed Dark Walnut, Nero Legna, or Smoked Eucalyptus figured in a satin lacquer and the saloon gains the timeless warmth of wood flooring, protection extends across decks with a Main Deck Protective Covers Package embracing aft cockpit seating, sunlounger and table cover plus foredeck seating, table, and sunbed cover, and underwater assurance begins with a full antifouling application. Seakeeping and extended range receive equal attention: the yacht is prepared for a future water maker installation with seacock and outlets blanked off, fresh water feed to the tank and power supply in place, compass swinging and adjustment are completed with a correction card, and the Ultimate Cruising Package brings a full crew cabin fit-out, a flybridge hardtop on stainless-steel supports, a hardtop stern electric canopy and the Seakeeper 6 Gyro Stabilizer System; entertainment and regional specification are further enriched by the Performance AV Package and the Platinum USA Package. Security is discreetly integrated with a safe concealed in the master cabin cabinetry offering 8.3 lts capacity with internal dimensions of W280 mm x H165 mm x D235 mm, and every choice reflects a deliberate pursuit of performance, poise, and long-range ease.

## Disclaimer

---

The details of this yacht are offered in good faith, but the accuracy of this information cannot be guaranteed, nor is any warranty given regarding the condition of the boat for sale; this yacht is offered subject to prior sale, price change, or withdrawal from the market without notice, and it is presented as a convenience by the listing broker to prospective purchasers and is not

intended to convey direct representation of a specific yacht for sale.

# CONTACTS

---

Shestakov Yacht Sales is a brokerage company specializing in the sale and service of yachts worldwide. The company offers services for buying and selling both new and used motor yachts, sailing vessels, and luxury superyachts. They also provide yacht registration, insurance, technical maintenance, crew selection, and charter organization services across the U.S., Canada, Latin America, the Caribbean, and the Bahamas.

The founder and lead broker of the company is Andrey Shestakov, a licensed and certified expert with extensive experience in marine engineering and shipbuilding.

The company has an extensive network of partnerships with major yacht manufacturers worldwide and provides services in multiple languages, including Russian, Ukrainian, Spanish, and English. The office is in Dania Beach, Florida, USA.

For more information and to view available yachts, you can visit the company's official website: <https://shestakovyachtsales.com>

## Contact details

---

**Phone:** +1(954)274-4435

**Email:** [andrey@shestakovyachtsales.com](mailto:andrey@shestakovyachtsales.com)

## Address

---



1380 Weeping Willow Way, Hollywood,  
Florida 33019