



## VERA NORTH - HINCKLEY



**Builder:** [Hinckley](#)

**LOA:** 57' 0" (17.65 m)

**Year Built:** 2021

**Beam:** 17' 0" (5.41 m)

**Model:** Talaria

**Min Draft:** 9' 7" (2.92 m)

**Price:** \$3,900,000 USD Subject to change.

**Max Draft:** 9' 7" (2.92 m)

[See full listing on our website](#)

**Location:** Stuart, United States

**Cruising Speed:** 38 Knots (43.73 MPH)

**Max Speed:** 46 Knots (52.94 MPH)

If you would like to buy a yacht **VERA NORTH - HINCKLEY** or would like help answering any questions concerning purchasing, selling, or chartering a yacht, please call **+1(954)274-4435** or click here on <https://shestakovyachtsales.com>

# TABLE OF CONTENTS

**OVERVIEW ..... 3**

**SPECIFICATIONS ..... 4**

    Basic Information ..... 4

    Dimensions ..... 4

    Speed, Capacities and Weight ..... 4

    Accommodations ..... 5

    Hull and Deck Information ..... 5

    Engine Information ..... 5

**GALLERY ..... 6**

**DETAILED DESCRIPTION ..... 11**

**CONTACTS ..... 15**

## OVERVIEW

---

VERA NORTH is the most fully appointed Talaria afloat, bearing more than \$1.5 million in custom upgrades and representing Hinckley craftsmanship at its finest. Conceptualized and executed without concession from the moment of commission, every option was carefully chosen and every detail painstakingly refined to produce a yacht that is exquisitely finished and utterly individual. This luxurious motor yacht — an emblematic Downeast express cruiser that functions equally well as an elegant dayboat, a comfortable coastal cruiser, or a capable superyacht tender — radiates poise and purpose in every line.

Beneath her graceful profile lie serious performance and handling credentials: upgraded MAN V12 engines rated at 1,400 hp and showing just 600 hours provide assured thrust, while a shallow 2'11" draft invites exploration of skinny-water coves and sandbars. Onboard systems include a Seakeeper 9 gyro for exceptional seakeeping, hydraulic bow thruster assistance, fly-by-wire steering and robust trim tabs for precise control. The interior feels bright and contemporary with brand new white upholstery, annual varnish work that gives a continuous glow, and a lifetime spent on a lift that has preserved her superb condition. At the helm, twin Garmin 8617 displays integrate with a FLIR thermal camera, and creature comforts extend to satellite TV and underwater lighting. VERA NORTH is a rare, meticulously curated Hinckley Talaria that sets the standard for quality, refinement, and timeless elegance.

# SPECIFICATIONS

---

## Basic Information

---

**Category:**  
Motor yachts

**Year Built:**  
2021

**Model Year:**  
2021

**Country:**  
United States

## Dimensions

---

**LOA:**  
57' 0" (17.65 m)

**Beam:**  
17' 0" (5.41 m)

**Min Draft:**  
9' 7" (2.92 m)

**Max Draft:**  
9' 7" (2.92 m)

## Speed, Capacities and Weight

---

**Cruise Speed:**  
38 Knots (43.73 MPH)

**Water Capacity:**  
200 Gallons

**Max Speed:**  
46 Knots (52.94 MPH)

**Fuel Capacity:**  
1200 Gallons

**Gross Tonnage:**  
30 Pounds

## Accommodations

---

**Total Heads:**

2

## Hull and Deck Information

---

**Hull Material:**

Fiberglass and Plastic Yachts

**Hull Designer:**

Hinckley (USA)

**Deck Material:**

Composite

**Interior Designer:**

Hinckley (USA)

**Hull Configuration:**

Modified V-Hull

## Engine Information

---

**Engines:**

2

**Engine Type:**

Inboard

**Manufacturer:**

MAN

**Fuel Type:**

Diesel



# GALLERY







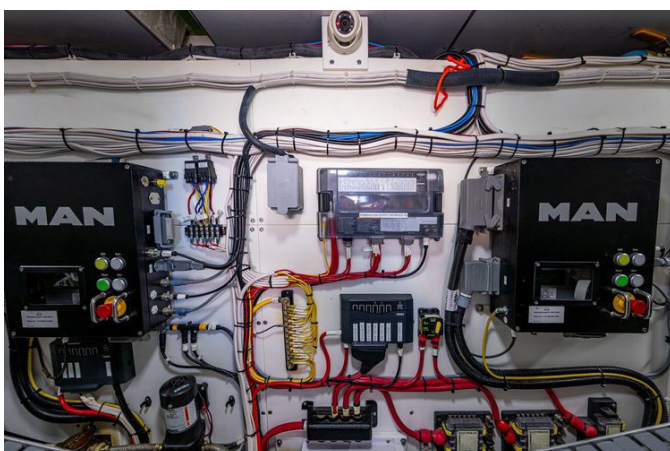












# DETAILED DESCRIPTION

---

## Construction

---

The hull is fashioned from a Carbon/Kevlar composite laid over a Corecell M Foam core, vacuum infused and post cured with epoxy using the Seaman Composite Resin Infusion Molding Process (SCRIMP®), producing a structure that is exceptionally light yet rigid and resilient. The deck follows the same high technology philosophy, built with E glass inner and outer skins encapsulating a closed cell foam core and laminated by SCRIMP to deliver superior strength, precise stiffness and meaningful weight savings that elevate performance and efficiency.

## Dimensions

---

With a length overall of 57.91 feet (17.65 meters) and a waterline length of 51.00 feet (15.54 meters), this yacht carries a molded beam of 17.75 feet (5.46 meters) and a loaded draft of just 2.92 feet (0.89 meters). Bridge clearance, without antennas, is 21.50 feet (6.55 meters). She is rated at 30 gross tons and displaces 58,000 lbs. Capacities include 1,200 US gallons (4,542 liters) of fuel and 200 US gallons (757 liters) of fresh water. Performance is confident and swift, with a maximum speed of 46.0 knots and an effortless cruising pace of 38.0 knots.

## Machinery

---

Power comes from twin MAN V12 1400 diesels rated at 1,400 hp each, turning through Twin Disc MG 5145SC gearboxes to twin Hamilton 403 Series waterjets. Ship's power is supported by one 17 kW Onan generator. Shore power connectivity is via two 125/250 VAC/50 AH cords that deploy and retract



through the transom on a Glendinning cord reel with wireless remote. The battery suite comprises four BCI 8D AGM batteries for the main house bank and four BCI 4D AGM batteries dedicated to the main engines and generator, backed by two 24 volt DC chargers, a 100 amp unit for the house bank and a 60 amp unit for the starting bank. Climate control is handled by Marine Air 24,000 BTU systems (three units) with five independent air handlers serving the salon, galley and heads, guest cabin, and owner's stateroom. Additional systems include a Sea Recovery watermaker and dual cylinder stainless steel trim tabs, complemented by a Seakeeper 9 gyro stabilizer. Precise maneuvering is assured with a hydraulic bow thruster rated at 25 hp and producing 720 lbs of thrust, while the JetStick III with the new Dynamic Steering delivers digital fly by wire control of the hydraulic steering, automatically optimizing sensitivity and tension with speed. Fuel is polished by dual crossover Racor filter/water separators with vacuum gauges and alarms for the main engines, plus a single Racor unit for the generator.

## Communication, navigation & entertainment systems

---

Communications are anchored by a Garmin GHSD10 wired handset VHF. Navigation confidence comes from a Garmin GMR 424 xHD2 radar feeding two Garmin GPSMAP 8617 multifunction displays at the helm, managed with one Garmin GRID controller. Course keeping is entrusted to the Garmin GHP Reactor autopilot with GHC20 control head and Shadow Drive, while position data is provided by one Garmin GPS 19X receiver/antenna. Entertainment unfolds across five independently configurable zones with Sonance premium sound in the master stateroom, guest cabin, salon, cockpit, and flybridge, all orchestrated via the yacht's Savant Pro remotes—one in the master and one in the salon—and an onboard iPad interface. Visuals impress with a pilothouse retractable 40" LED HD TV mounted in the salon and a master cabin 32" LED

HD TV recessed neatly into the bulkhead.

## Galley equipment

---

In the main galley, a two burner induction cooktop pairs with a combination stainless steel microwave and convection oven to deliver effortless culinary capability. Cold storage is equally robust, with two Sub Zero drawer style refrigerators and a custom insulated top loading box fitted with a Grunert wrap around condensing freezer plate, while an U Line 110 volt icemaker keeps refreshments perfectly chilled.

## Deck equipment

---

On deck, the craftsmanship is unmistakable, with tapered, gloss varnished teak finished in the signature Hinckley profile and a bright work “eyebrow” and cockpit coaming in matching gloss teak. Forward, a molded in anchor locker is set into the foredeck beneath a hinged hatch assisted by gas springs, while a stainless steel half round rub rail caps the solid fiberglass molding. Ground tackle handling and mooring are simplified by two Hinckley open bow chocks in type 316L stainless and four Hinckley closed chocks positioned at the fore and aft spring cleats, complemented by eight type 316 stainless steel mooring cleats sized precisely—at the bow, two at 12 inches; at the fore and aft spring positions, four at 10 inches; and at the stern, two at 12 inches. Security and movement around the foredeck are enhanced by a closed single bow rail standing 30 inches high and 1 1/4 inches in diameter, fabricated in type 316L stainless. Safe handholds abound with five gloss varnished teak handrails mounted along the cabin top and pilothouse roof, and ventilation is served by ten opening Hinckley portlights with removable screens. Practical detailing continues aft with stainless steel type 31 scuppers, a Hinckley designed swim platform in FRP with teak treads and stainless

half round trim accessed through a hinged transom door, and a telescoping three step stainless steel swim ladder. After a swim, a cockpit shower with hot and cold mixing valve and wand awaits, while discreet courtesy lighting glows beneath each cockpit side deck and along the stairs between the cockpit and pilothouse.

## Fire fighting equipment

---

Safety is anchored by a Fireboy CG2 600 fixed fire control system.

## Accommodations

---

Step aboard VERA NORTH to a Bristol satin cherry interior underfoot and overhead, its warmth heightened by gloss teak and tulipwood flooring that flows throughout. The salon is exceptionally well appointed, with powered side windows, Slysol blinds, and a retractable 40" HD television that disappears at the touch of a button. The galley blends poise and purpose, featuring Sub Zero refrigeration, Corian countertops, and top tier appliances to make preparation effortless and presentation refined. Below, a full beam owner's stateroom with a king berth and ensuite bath anchors the accommodations, joined by guest spaces whose convertible sofas expand total sleeping capacity to six; an additional full bathroom serves the lower lounge to enhance privacy and convenience. Above, the flybridge has been comprehensively redesigned, adding teak decking underfoot, powered Stidd helm chairs, a varnished cocktail table, and a complete Garmin navigation suite—an inviting lounge for guests and a confident command center for the skipper.



# CONTACTS

---

Shestakov Yacht Sales is a brokerage company specializing in the sale and service of yachts worldwide. The company offers services for buying and selling both new and used motor yachts, sailing vessels, and luxury superyachts. They also provide yacht registration, insurance, technical maintenance, crew selection, and charter organization services across the U.S., Canada, Latin America, the Caribbean, and the Bahamas.

The founder and lead broker of the company is Andrey Shestakov, a licensed and certified expert with extensive experience in marine engineering and shipbuilding.

The company has an extensive network of partnerships with major yacht manufacturers worldwide and provides services in multiple languages, including Russian, Ukrainian, Spanish, and English. The office is in Dania Beach, Florida, USA.

For more information and to view available yachts, you can visit the company's official website: <https://shestakovyachtsales.com>

## Contact details

---

**Phone:** +1(954)274-4435

**Email:** [andrey@shestakovyachtsales.com](mailto:andrey@shestakovyachtsales.com)

## Address

---



1380 Weeping Willow Way, Hollywood,  
Florida 33019