

MISTY BLUE - OCEAN YACHTS



Builder: [OCEAN YACHTS](#)

LOA: 57' 0" (17.37 m)

Year Built: 2004

Beam: 16' 0" (5.13 m)

Model: Sportfish

Min Draft: 15' 10" (4.83 m)

Price: \$449,900 USD Subject to change.

Cruising Speed: 27 Knots (31.07 MPH)

[See full listing on our website](#)

Location: West Palm Beach, United States

Max Speed: 38 Knots (43.73 MPH)

TABLE OF CONTENTS

OVERVIEW	3
SPECIFICATIONS	4
Basic Information	4
Dimensions	4
Speed, Capacities and Weight	4
Accommodations	5
Hull and Deck Information	5
Engine Information	5
GALLERY	6
DETAILED DESCRIPTION	13
CONTACTS	21

OVERVIEW

"Misty Blue" has been lovingly tended by seasoned owners who have cruised her across the Chesapeake Bay since 2018. Offered for sale, the yacht carries numerous upgrades and is presented ready for inspection; interested buyers exploring yacht listings at her current location are encouraged to come and discover the vessel's refined elegance.

SPECIFICATIONS

Basic Information

Category:
Motor yachts

Year Built:
2004

Sub category:
Sport Fisherman

Country:
United States

Model Year:
2004

Dimensions

LOA:
57' 0" (17.37 m)

Beam:
16' 0" (5.13 m)

Min Draft:
15' 10" (4.83 m)

Speed, Capacities and Weight

Cruise Speed:
27 Knots (31.07 MPH)

Water Capacity:
200 Gallons

Max Speed:
38 Knots (43.73 MPH)

Fuel Capacity:
1042 Gallons

Accommodations

Total Heads:

3

Hull and Deck Information

Hull Material:

Fiberglass and Plastic Yachts

Hull Designer:

N/A

Deck Material:

Fiberglass

Interior Designer:

N/A

Hull Configuration:

N/A

Engine Information

Engines:

2

Engine Type:

Inboard

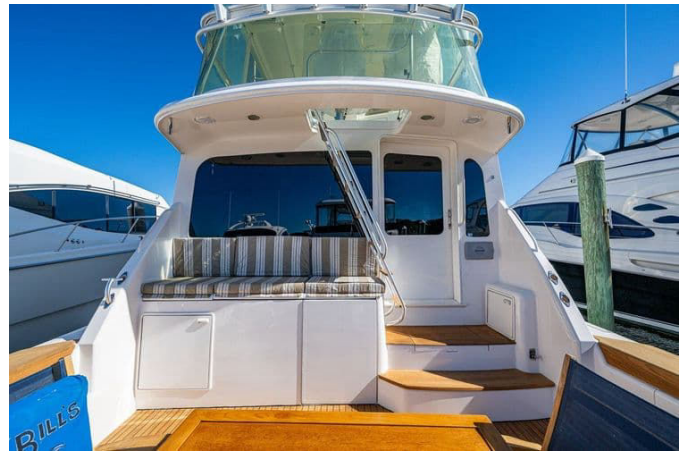
Manufacturer:

MTU

Fuel Type:

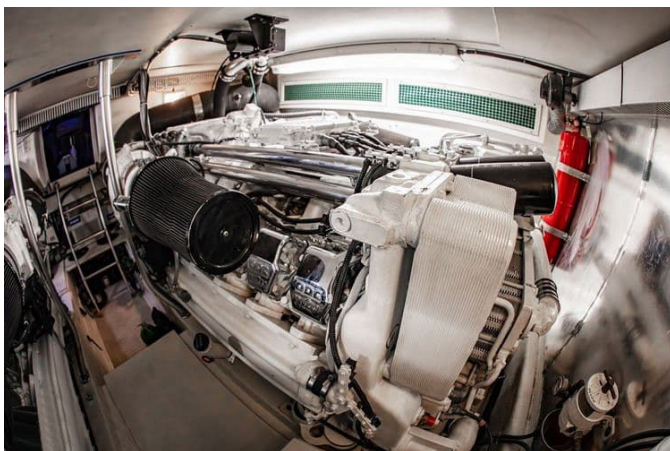
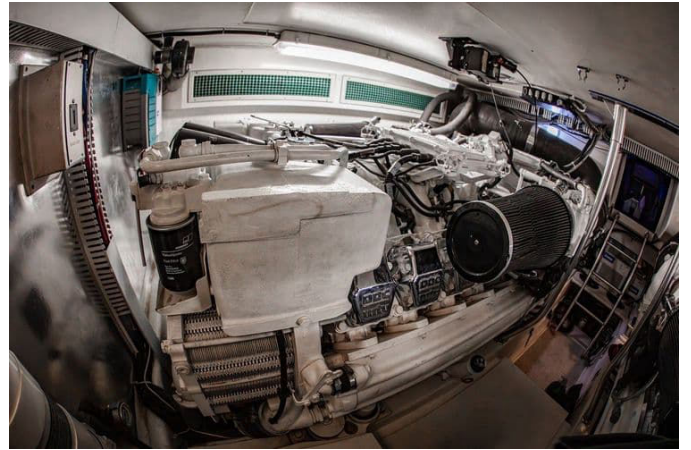
Diesel

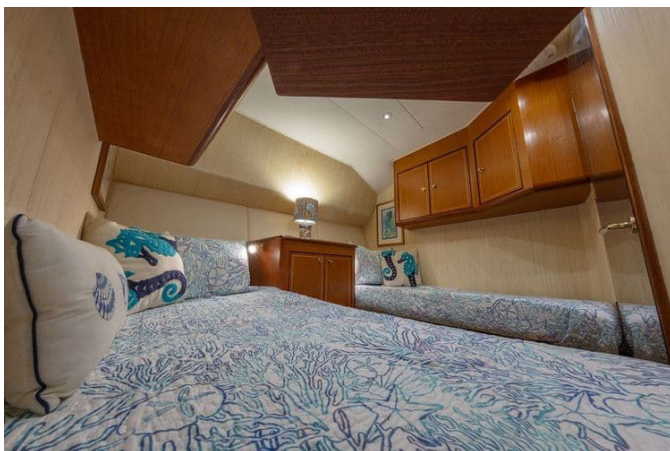
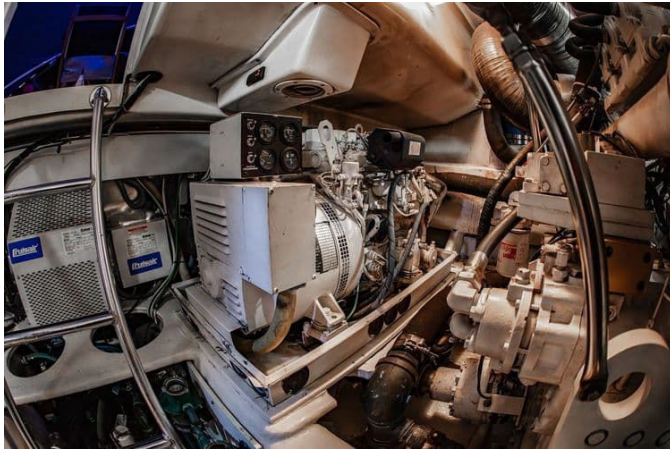
GALLERY















DETAILED DESCRIPTION

Vessel walkthrough

"Misty Blue" is the ideal yacht for relaxed cruising or dedicated fishing expeditions, having been cherished by her current owners since 2017 who primarily enjoyed light cruising on the Chesapeake Bay. Meticulously maintained, she has received her MTU 2000-hour services and a series of thoughtful maintenance upgrades, and she presents beautifully with custom ice blue hull sides and recently polished white topsides. The Ocean 57' delivers exceptional accommodations for owners and guests, where entertaining is both functional and pleasurable. Entering the salon from the cockpit reveals L-shaped lounge seating to port with a high/low teak cocktail table and an interior finished in satin teak cabinetry accented throughout by a high gloss teal bullnose. To starboard a concealed flat panel TV rises electrically from the cabinetry beside a wet ice maker and the primary ship service electrical panel. Forward, the galley and dinette flow seamlessly with the salon, while below decks the guest stateroom with side-by-side single berths lies to port and the guest head with laundry including washer and dryer is to starboard. Aft, one of the largest mid-ship master staterooms offers a walk-around queen berth, a private ensuite head, a vanity and abundant storage, and forward the VIP stateroom features a queen walk-around berth, two hanging closets and a private ensuite head.

Salon

The salon is an elegant synthesis of comfort and modern entertainment, appointed to elevate every moment aboard. A generous sofa provides abundant storage for an orderly environment, complemented by an upholstered chair and climate-controlled air conditioning for continuous

comfort. A forty-eight inch flat screen LCD TV on an electric lift integrates seamlessly into the refined interior while the Bose Lifestyle surround sound system and ten-speaker entertainment setup create a deeply immersive audio experience. Practical luxuries include an ice maker for effortless refreshment, Silhouette blinds for refined privacy and accent lighting that bathes the salon in a warm, inviting glow. The entrance is finished with a bamboo floor leading to a high-gloss teak cabinet with storage below, and a matching high-gloss teak table with a teak base completes the sophisticated salon ensemble.

Galley & dinette

The galley and dinette combine purposeful craftsmanship with refined materials to support both casual meals and formal entertaining. Refrigeration is handled by two Sub-Zero 700 BR under-counter refrigerated drawers paired with two matching freezer drawers, while Corian countertops provide a durable, seamless work surface over bamboo hardwood flooring that introduces natural warmth underfoot. Culinary operations are simplified by the Sharp Carousel microwave/convection oven and a three-burner cooktop with a Corian cover that extends workspace when needed, and a trash compactor with a garbage disposal maintains cleanliness and convenience. For aficionados of fine wine, an Edge Star wine cooler is included, and the dinette is anchored by a high gloss teak table with a teak base that creates a refined setting for dining and socializing.

Laundry

The laundry area is fitted with reliable, high-performing appliances to make life aboard effortless, featuring a Kenmore washer and dryer that handle routine laundry demands with ease and a central vacuum system that simplifies upkeep throughout the yacht. This thoughtfully arranged space ensures

domestic tasks are efficient and unobtrusive, allowing more time to enjoy the water and the company of guests.

Master stateroom

The master stateroom is conceived as a private sanctuary at sea, blending functional storage with luxurious appointments for restful nights and effortless organization. A walk-around queen berth provides generous storage beneath while a private ensuite head and a vanity add comfort and convenience. Entertainment is provided by a thirty-six inch flat screen TV and complemented by a Bose speaker system, and two cedar-lined hanging lockers offer elegant care for fine garments. Climate-controlled air conditioning, extensive drawer and locker storage and the inclusion of a safe complete a well-conceived suite designed to be both secure and supremely comfortable for extended cruising.

Master head

The master head is appointed with classic marine materials and modern systems to deliver both beauty and function. An Amtico teak and holly floor imparts traditional nautical character beneathfoot while a Corian countertop offers a durable and elegant surface. The stall shower includes a comfortable seat to enhance relaxation, and the Sealand vacu-flush head provides contemporary convenience and efficient operation, making the space a refined and practical retreat.

VIP stateroom

The VIP stateroom is crafted to offer guests refined privacy and comfort, featuring a walk-around queen berth that invites restful sleep and a private ensuite head for convenience. Entertainment needs are covered with a flat

screen TV while two cedar-lined closets afford elegant garment storage; end tables and climate-controlled air conditioning add familiar comforts. The cabin provides abundant drawer and locker space, ensuring guests find the accommodation both gracious and fully equipped for extended stays.

VIP head

The VIP head mirrors the quality of the master facilities with an Amtico teak and holly floor, a Sealand vacuum flush head for efficient operation and a stall shower that offers a private and comfortable space for guests to refresh. Attention to materials and layout lends this head a refined, nautical elegance while remaining supremely practical.

Guest stateroom

The guest stateroom is arranged for comfortable practicality, offering side-by-side single berths that create a cozy sleeping configuration and a hanging locker for garment storage. Drawers beneath the berths and storage cabinets above the TV ensure ample space for personal effects, and the layout is optimized to make the most of the available volume, providing a welcoming retreat for visitors aboard.

Guest head

The guest head combines durable surfaces with tasteful marine finishes to serve crew and visitors alike. A Corian countertop offers a sleek, easy-care surface, while the stall shower provides a private, comfortable space to refresh. The Amtico teak and holly floor adds classic nautical styling underfoot, making the guest head both attractive and thoroughly functional.

Flybridge

The flybridge is a versatile social and operational space designed for both leisure and serious sportfishing, fully equipped to enhance every moment on deck. Air conditioning keeps the area comfortable, and a refrigeration/freezer unit provides easy access to refreshments while U-shaped seating forward of the helm offers a sociable lounge. Two Bomar hatches admit ventilation and daylight, and the helm is appointed with Pompanette teak ladder-back chairs and single lever engine controls for authoritative command. Fishing gear includes a rocket launcher on the aft bridge rail and Miya Epoch US-9 electric teaser reels, while the enclosure employs Clear 2 Sea material for three-sided visibility with a lower aft rail section and the aft curtains are fashioned from O'Sea sixty gauge with a center u-zip for convenient access. Together these features create a flybridge that blends luxury, practicality and serious functionality.

Electronics & navigation

The electronics and navigation suite is comprehensive and modern, providing the information and control necessary for confident passage making. MTU engine displays deliver critical engine data at a glance while emergency backup controls provide redundancy for peace of mind. Navigation is centered on Garmin 7215 and Garmin 4210 displays paired with a Garmin radar mounted with a six foot open array antenna for precise detection and tracking. Communication is handled by the Icom VHF, the Simrad autopilot facilitates steady course keeping, and a Vetus bow thruster adds exceptional maneuverability in tight quarters. An ACR spotlight enhances nighttime visibility and the KVH HD TracVision 4 Sat system provides satellite television reception to keep guests entertained. This integrated electronics package balances advanced capability with reliable, user-friendly operation.

Deck & mechanical

The deck and mechanical systems reflect a focus on power, redundancy and practical fishing and cruising amenities. Propulsion is provided by MTU twelve V2000 engines rated at one thousand five hundred HP each, paired with Twin Disc MG-6449-00-A two point six to one gears for smooth, reliable drive. Fuel handling utilizes Racor fuel filters and a dedicated fuel transfer system, while a Reverso electric oil exchange system streamlines regular maintenance. Safety features include an automatic fire suppression system and emergency Y-valves on the main engine seacocks. Electrical systems are supported by two twenty-four volt battery chargers and a twelve volt charger dedicated to the bow thruster, with a Glendinning retractable shore power system for seamless dockside connection and a Westerbeke fifteen KW generator with two thousand nine hundred sixty-nine hours for onboard power. Convenience and utility are enhanced by an Eskimo ice chipper capable of producing up to six hundred pounds of ice per day and Hynautic power assist steering. The deck appointments include teak coverboards, a teak deck and a teak entry step with insulated storage below, fresh and raw water washdowns in the cockpit plus a dockside water connection. Fishing provisions comprise Rupp three times spreader outriggers and a center rigger, both stored for convenience, large below-deck fishboxes with macerators, and a transom fishbox/livewell; other deck features include a fiberglass swim platform with ladder, a cockpit freezer, a transom door with gate, an eight-man canister liferaft, a custom high-low cockpit cocktail table and a bow pulpit with an anchor chute. The canvas cockpit shade with single wings provides full enclosure, and a twelve foot Caribe hard bottom tender with a forty HP Honda engine and a Marquip 1000 low profile davit ensure easy tender deployment and retrieval.

Updates

This yacht has benefited from significant recent investments to sustain performance and comfort. In two thousand twenty-three a comprehensive one thousand hour service was completed and the hydraulic steering ram and pump were replaced to improve helm response, and that year also saw the installation of three new A/C units and air handlers to ensure a comfortable climate throughout the vessel. Planned work for two thousand twenty-four includes installation of new injectors and replacement of three raw water pumps serving the Eskimo ice machine, the flybridge, the A/C and the cockpit freezer to further improve reliability. A wet ice machine was added to the salon in two thousand twenty-one for convenient access to ice when entertaining, and the hull bottom was soda blasted in two thousand eighteen to maintain a smooth, clean underwater profile. These updates demonstrate a continuing commitment to keeping the yacht at the highest standards of operation and comfort.

Salesman remarks

"Misty Blue" has been meticulously cared for by knowledgeable owners who have enjoyed cruising her on the Chesapeake Bay since 2018, and she has received numerous updates that reflect a commitment to quality, making her well prepared for inspection and an excellent choice for buyers seeking a maintained and upgraded vessel.

Exclusions

The sale expressly excludes the owner's personal belongings, tools and gear, artwork, fishing equipment, and the vessel's name. The company provides the details of this vessel in good faith but cannot guarantee or warrant the

accuracy of the information nor the condition of the vessel; prospective buyers are encouraged to instruct their agents or surveyors to verify any details they wish validated. Engine and generator hours are current as of the listing date and are supplied by the vessel owner for informational purposes only, and all information should be confirmed by the potential buyer and their surveyor prior to acceptance. This vessel is offered subject to prior sale, price change, or withdrawal without notice.

CONTACTS

Shestakov Yacht Sales is a brokerage company specializing in the sale and service of yachts worldwide. The company offers services for buying and selling both new and used motor yachts, sailing vessels, and luxury superyachts. They also provide yacht registration, insurance, technical maintenance, crew selection, and charter organization services across the U.S., Canada, Latin America, the Caribbean, and the Bahamas.

The founder and lead broker of the company is Andrey Shestakov, a licensed and certified expert with extensive experience in marine engineering and shipbuilding.

The company has an extensive network of partnerships with major yacht manufacturers worldwide and provides services in multiple languages, including Russian, Ukrainian, Spanish, and English. The office is in Dania Beach, Florida, USA.

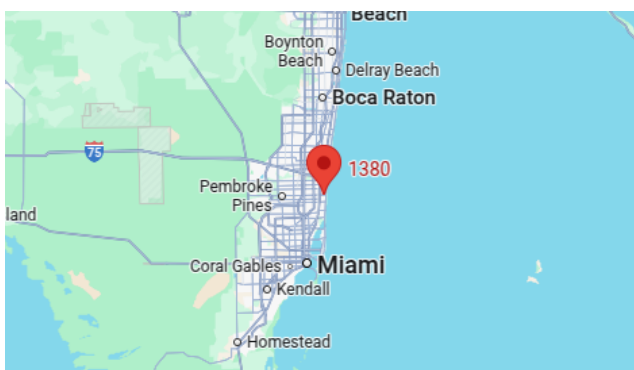
For more information and to view available yachts, you can visit the company's official website: <https://shestakovyachtsales.com>

Contact details

Phone: +1(954)274-4435

Email: andrey@shestakovyachtsales.com

Address



1380 Weeping Willow Way, Hollywood,
Florida 33019