

F55 - PRINCESS



Builder: [PRINCESS](#)

LOA: 58' 0" (17.68 m)

Year Built: 2021

Beam: 16' 0" (4.87 m)

Model: F55

Min Draft: 4' 9" (1.46 m)

Price: \$1,893,222.26 USD Subject to change.

Max Draft: 8' 6" (2.60 m)

[See full listing on our website](#)

Location: Mugla, Turkey

Cruising Speed: 26 Knots (29.92 MPH)

Max Speed: 33 Knots (37.98 MPH)

TABLE OF CONTENTS

OVERVIEW	3
SPECIFICATIONS	4
Basic Information	4
Dimensions	4
Speed, Capacities and Weight	4
Accommodations	5
Hull and Deck Information	5
Engine Information	5
GALLERY	6
DETAILED DESCRIPTION	18
CONTACTS	25

OVERVIEW

This immaculately maintained 2021 Princess F55, offered for sale under Turkish registry and driven by twin Volvo Penta D13-900 engines, presents in superb condition throughout. Bearing Princess Yachts' celebrated deep-V planing hull, a generous three-cabin layout and a comprehensively appointed flybridge, she blends spirited performance with quiet luxury and assured poise. With low hours and a meticulous service history, she boasts full teak decks, a hydraulic swim platform, an onboard generator, an upgraded navigation and electronics suite and a premium interior finish. Standing out in the 55–60 ft flybridge motor yacht category, this turnkey luxury motor yacht is ideal for private cruising and Mediterranean adventures, equally suited as a family cruiser or a Med-spec yacht for extended passages. Princess pedigree, Volvo Penta reliability and a class-leading layout make her a compelling offering; motivated seller.

SPECIFICATIONS

Basic Information

Category:
Motor yachts

Year Built:
2021

Model Year:
2021

Country:
Turkey

Dimensions

LOA:
58' 0" (17.68 m)

Beam:
16' 0" (4.87 m)

Min Draft:
4' 9" (1.46 m)

Max Draft:
8' 6" (2.60 m)

Speed, Capacities and Weight

Cruise Speed:
26 Knots (29.92 MPH)

Water Capacity:
163.79 Gallons

Max Speed:
33 Knots (37.98 MPH)

Fuel Capacity:
726.47 Gallons

Gross Tonnage:
56 Pounds

Accommodations

Sleeps:

3

Crew Berths:

1

Total Heads:

2

Hull and Deck Information

Hull Material:

Fiberglass and Plastic Yachts

Hull Designer:

Bernard Olesinski

Deck Material:

GRP

Interior Designer:

Princess Yachts Design Studio

Hull Configuration:

Deep Vee

Engine Information

Engines:

2

Engine Type:

Inboard

Manufacturer:

Volvo

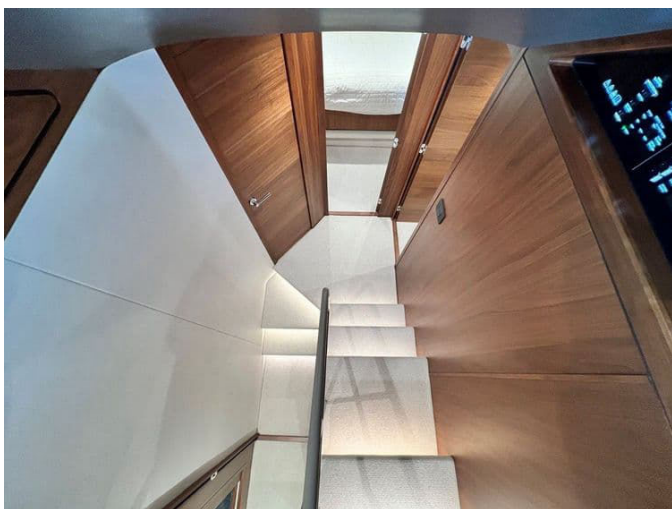
Fuel Type:

Diesel

GALLERY



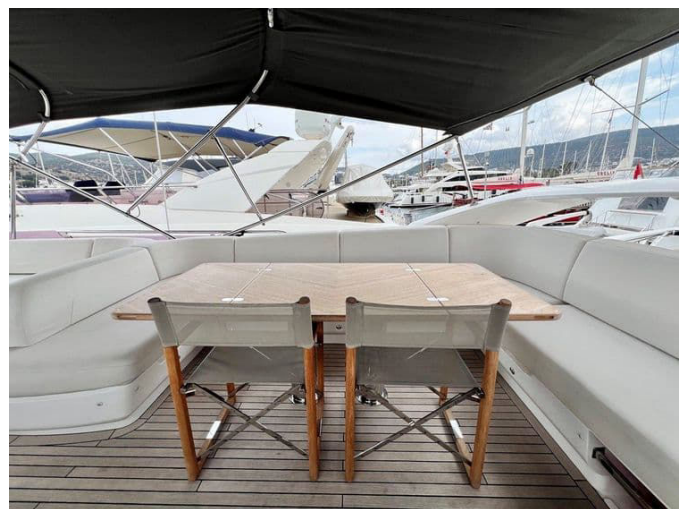






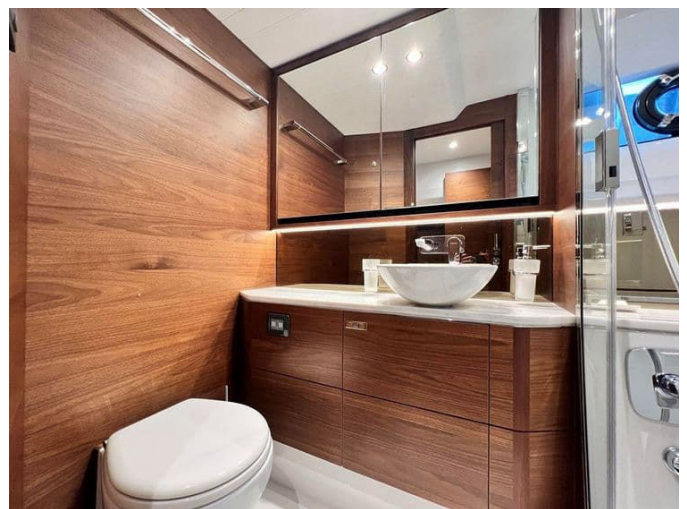
















DETAILED DESCRIPTION

Specification - standard and optional extras

Built to the renowned Princess standard, this F55 Motor Cruiser is specified with twin Volvo Penta D13 900 diesel engines (two x 900 hp each) on shafts and a white hull, delivering powerful, poised performance. The interior wood is walnut in a satin finish, with the galley floor in planked walnut and the aft saloon area upgraded to a matching timber floor; galley worktops are in Sylmar White solid surface, complemented by a dishwasher and a washer/dryer tucked neatly beneath the stair storage. The saloon features the full size dining/coffee table in lieu of the standard option, with twin electrically operated leg mechanisms; the tabletop halves to reduce length by fifty percent when folded and incorporates a sliding function for effortless coffee table use. The starboard guest cabin is arranged with a double berth conversion featuring a powered sliding mechanism to the inboard berth, while the aft cabin is fully fitted with a single berth and its own separate WC and shower. For confident close quarters control, a dual station Volvo joystick offers low speed manoeuvring in docking mode and intuitive steering at any speed in driving mode, operating engines, steering and thrusters and including a variable speed stern thruster as fitted together with an updated, variable speed bow thruster to 210 kgf. A hold function docking facility further increases precision, complemented by third station controls in the cockpit with thruster operation and an emergency stop. Dynamic comfort underway and at anchor is ensured by a Seakeeper 9 gyro stabiliser with upper helm control through the chart plotter screens, while four underwater transom lights lend drama at night. Freshwater independence is boosted by an Aquafresh watermaker, a reverse osmosis filter plumbed to the sink for purified drinking water, and a rainwater drinking water machine with a

dedicated purification system. On deck, the Allure Collection II (no hardtop) elevates both interior and exterior styling; inside, the lower helm seats are enriched with quilting detail, contrast piping and panelling, while outside the flybridge helm seats echo the same quilting and contrast execution. Teak step nosings are upgraded across transom, flybridge and foredeck, with side deck steps also in teak when the teak side deck option is selected; the flybridge console and wet bar are sprayed in Oyster Grey and the foredeck welcomes upholstered sunbed cushions with adjustable headrests. Teak is lavishly laid to the flybridge deck, the side decks, the foredeck and the coachroof walkthrough, and at the stern the electro hydraulic bathing platform raises and lowers with a safe working load of 450 kg and is pre engineered with keyway plates and a slider system to ease later fitting of dinghy chocks. Two electric stern rope handling winches take the strain when mooring, while a 2.9 m electro hydraulic telescopic passerelle with automatic handrails assures seamless boarding. Ground tackle is upgraded with a stainless steel Ultra anchor in place of standard, and a total of 60 m of 10 mm chain with an additional 20 m specified over standard, plus a separate 60 m length of galvanised chain noted at 10". Power resilience off grid is enviable: an ONAN 17.5 kW generator replaces the standard set; continental 220/240 V sockets are fitted; AGM 90 Ah batteries are specified for both starting and domestic banks; a 5 kW inverter, a 120 A charger, and 600 A lithium batteries expand autonomy; and a 1.2 kW solar panel is mounted on the bimini top. A comprehensive camera suite covers the cockpit and flybridge, with two additional cameras dedicated to the engine room. Culinary and convivial touches abound: a Kenyon electric griddle/BBQ is integrated into the flybridge wet bar, an icemaker serves the aft saloon, and the foredeck gains a freshwater anchor wash/deckwash; stern docking lights aid night time arrivals, and a combination washing machine/dryer is housed below the companionway stairs. An exterior lighting upgrade adds low level accent strip lighting beneath the flybridge wet bar, three accent spots on the transom,

seven additional deck lights along the side decks and foredeck for a total of thirteen, and two pop up lanterns at the forward flybridge dinette. Entertainment is elevated by a premium audio specification: in the deck saloon a Fusion Apollo RA 770 with Wi-Fi/DAB and external USB partners with a Samsung BD J5900 Blu-ray player when the optional TV is selected, four Focal 100 ICW6 speakers and a Fusion CP AS1080 subwoofer replacing the Fusion MS AV755; in the master stateroom a Fusion Apollo RA 770 with Wi-Fi/DAB and Samsung BD J5900 Blu-ray are paired with four Focal 100 ICW6 speakers and a Fusion CP AS1080 subwoofer in place of a Fusion SRX 400; the cockpit benefits from two waterproof Fusion Signature 7.7" speakers linked to the saloon audio with local Fusion SRX 400 control; the flybridge carries a Fusion SRX 400 with waterproof 6.5" speakers, also linked to the saloon source. Visuals are equally compelling: the master stateroom features a 43" UHD LED TV with Fusion MS AV755 radio/DVD/MP3 and Bluetooth; the forward stateroom gains a 32" LED TV with Fusion MS AV755 radio/DVD/MP3 and Bluetooth, paired to two Fusion 6" MS CL602 speakers; and the starboard cabin is equipped with a 32" LED TV and Fusion MS AV755 radio/DVD/MP3/DAB with Bluetooth, driving two Fusion MS CL602 speakers. At the helms, navigation and communications are turnkey with Garmin 424 XHD2 radar and a 48' open array painting crisply on the standard 16" display and options for separate or split screen presentation alongside the chart plotter and engine instrumentation; a second 16" colour multifunction display is fitted at the lower helm accompanied by a Garmin GRID remote keypad, and a Garmin GMI 20 four inch multifunction display sits at the upper helm to present and control individual functions such as log and echo sounder, mirrored by a second 16" colour MFD and a dedicated GRID keypad at the upper station. Plotter charts are the Rest of World version, and an International VHF completes the suite. Climate control is comprehensive: reverse cycle air conditioning/heating totals 78,000 BTU, designed for ambient temperatures up to 40°C (tropical) with controls in all cabins and

outlets to all areas, including bathrooms, and the recommended generator for this load is 17.5 kW; the aft cabin receives its own 6,000 BTU condensing unit supplying a 6,000 BTU air handler with SMX control and a separate outlet to the toilet. Practicalities include mosquito screens to all opening portlights, an electric overboard discharge system supplementing the standard manual setup with an electrically operated valve so the seacock need not be handled each time and a microswitch on the seacock that prevents pump operation when it is closed; the aft cabin toilet is plumbed into the holding tank system, and reticulated foam is specified to all standard exterior cockpit, foredeck and flybridge seating and sunpads. Exterior covers are in grey canvas; the bimini top is finished in matching grey and is additionally specified with dimmable LED overhead lighting switched from the console and electro hydraulic power operation. Tableware and soft furnishings are beautifully curated with Princess China five piece sets in six place settings, Princess glasses comprising six wine and six tumblers, and David Mellor 'Paris' cutlery seven piece sets for six place settings aboard; two stools for use at the forward saloon dinette stow in lockers beneath the cabin berth. Premium fabrics uplift is selected, including small rectangular quilted blankets with bed linen, plus additional scatter cushions and throws. The interior colour scheme sets Seychelles Stone carpet to the forward saloon, helm, stairs, lobby and lower accommodation; in the saloon the port U shaped sofa and starboard sofa are upholstered in Caribbean Outdoor Driftwood by Westbury@Altfield, matched to the tops of two PYI barstools in the same fabric. In the master cabin the bedhead is in Ouessant Galet 37390334, Quartz VIII; the small rectangular quilted blanket with bed linen is Quartz Focus 10650 901 by Quartz; and two PYI port breakfast chairs are upholstered in Outdoor Linnen Driftwood by Westbury@Altfield. The forward cabin mirrors this with a bedhead in Ouessant Galet 37390334, Quartz VIII and a Quartz Focus 10650 901 small rectangular quilted blanket; the starboard cabin likewise features a bedhead in Ouessant Galet 37390334, Quartz VIII and the same Quartz Focus 10650 901 blanket. Accent textiles and

throws are meticulously selected: in the saloon there is one 20" cushion in Carabosse 02 Oro by James Malone @ Altfield, three 20" cushions in Shepherds Cloth Wheat SHP2 by De Le Cuona, and two 20" cushions in Shepherds Cloth Midnight SHP7 by De Le Cuona; in the master cabin the bed carries two 22" cushions in Cape Lead CP12 by De Le Cuona, the port breakfast chairs add one 18" cushion in Tielt 28 Ochre by James Malone @ Altfield, and the bed is dressed with one Saan Finely Woven Cashmere throw in Soft Grey Taupe 200 x 145 cm by Oyuna. The forward cabin reprises the bedhead in Ouessant Galet 37390334, Quartz VIII with a small rectangular quilted blanket in Quartz Focus 10650 901. In the starboard cabin the bed features two 20" single diagonal stitch cushions in Shepherds Cloth Wheat SHP2 detailed in Tielt 28 Ochre by De Le Cuona/James Malone @ Altfield, one Saan Finely Woven Cashmere throw in Soft Grey Taupe 200 x 145 cm by Oyuna, and two 20" single diagonal stitch cushions in Shepherds Cloth Wheat SHP2 detailed in Shepherds Cloth Midnight SHP7 by De Le Cuona. Exterior upholstery is finished in Comfort Exterior III Met Ice with a contrast in Comfort Exterior III Met Macadamia; fyers and winter covers are included, and a shadow shade with chrome poles is fitted over the bow seating area.

Description & highlights

Teak underfoot on the flybridge and teak capped steps set the tone for craftsmanship you can see and feel, while the electro hydraulic transom platform with dedicated tie downs makes tender launch and recovery an effortless ritual. Command comes naturally via dual station Volvo joystick control, perfectly harmonised with bow and stern thrusters, giving fingertip authority in marinas and unruffled poise in crosswinds. The helm is defined by clarity: twin 16 inch Garmin multifunction displays present radar, charts and full navigation data in crisp detail, all backed by the assurance of an Onan 17.5 kW generator and reverse cycle air conditioning/heating throughout the

yacht for year round comfort. Life aboard is elegantly practical; the galley is specified for real cooking with a full size fridge/freezer, dishwasher and a combination microwave/convection oven, while the saloon invites long, unhurried gatherings on a U shaped sofa around a clever full size dining/coffee table with smooth electric adjustment and integrated LED overhead lighting. Outside, relaxation unfolds under the grace of an electro hydraulic bimini crowned with dimmable LED accent lighting, an extensive exterior lighting package that transforms evenings at anchor, and a solar panel that quietly extends your independence.

Speed & fuel consumption

Powered by twin Volvo Penta D13 900 shaft drive diesels, the Princess F55 balances spirited performance with efficient passage making. Independent testing recorded that at 2,200 rpm the yacht reached 26.6 knots with fuel use of approximately 291 litres per hour, equating to about 11 litres per nautical mile; easing back to around 22 knots at approximately 2,000 rpm saw consumption near 230 litres per hour, or roughly 10 litres per nautical mile. With a fuel capacity of 2,750 litres, her practical range at a comfortable cruising pace, reserving a prudent margin, is around 250 nautical miles. At the top end, the F55 is published at approximately 33 knots, while a sea trial captured roughly 2,500 rpm yielding about 29.4 knots in the prevailing conditions, underscoring the boat's ability to deliver confident speed with composure. Beyond the numbers, this example is flagged in Turkey with clear documentation and registration prepared for Mediterranean cruising. Her deep V, resin infused hull delivers smooth seakeeping, exemplary build integrity and long term durability. The flybridge is expansive, with a wet bar, sun loungers, a well judged helm station and a welcoming U shaped social area — as perfect for unhurried lunches as for serene sunsets at anchor. Below, large hull side glazing floods every cabin with natural light, while the

interior finish — satin lacquered timber, solid surface counters and premium upholstery — speaks softly of quality in every touchpoint.

CONTACTS

Shestakov Yacht Sales is a brokerage company specializing in the sale and service of yachts worldwide. The company offers services for buying and selling both new and used motor yachts, sailing vessels, and luxury superyachts. They also provide yacht registration, insurance, technical maintenance, crew selection, and charter organization services across the U.S., Canada, Latin America, the Caribbean, and the Bahamas.

The founder and lead broker of the company is Andrey Shestakov, a licensed and certified expert with extensive experience in marine engineering and shipbuilding.

The company has an extensive network of partnerships with major yacht manufacturers worldwide and provides services in multiple languages, including Russian, Ukrainian, Spanish, and English. The office is in Dania Beach, Florida, USA.

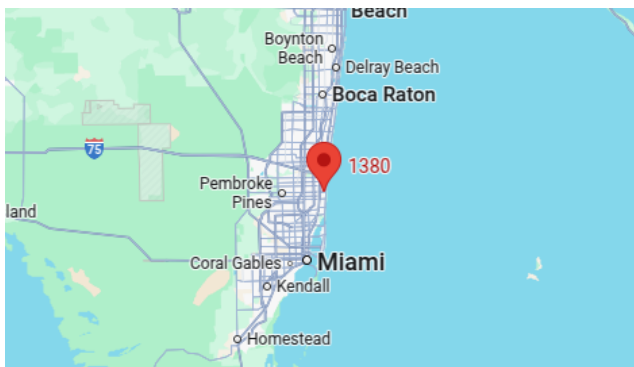
For more information and to view available yachts, you can visit the company's official website: <https://shestakovyachtsales.com>

Contact details

Phone: +1(954)274-4435

Email: andrey@shestakovyachtsales.com

Address



1380 Weeping Willow Way, Hollywood,
Florida 33019