



SHESTAKOV

Yacht Sales

INCENTIVIZED - VANQUISH YACHTS



Builder: [VANQUISH YACHTS](#)

LOA: 58' 0" (17.68 m)

Year Built: 2022

Beam: 16' 0" (5.08 m)

Model: VQ58

Max Draft: 14' 9" (4.50 m)

Price: \$2,495,000 USD Subject to change.

Cruising Speed: 28 Knots (32.22 MPH)

[See full listing on our website](#)

Location: Fort Lauderdale, United States

Max Speed: 41 Knots (47.18 MPH)

If you would like to buy a yacht **INCENTIVIZED - VANQUISH YACHTS** or would like help answering any questions concerning purchasing, selling, or chartering a yacht, please call **+1(954)274-4435** or click here on <https://shestakovyachtsales.com>

TABLE OF CONTENTS

OVERVIEW 3

SPECIFICATIONS 4

 Basic Information 4

 Dimensions 4

 Speed, Capacities and Weight 4

 Accommodations 4

 Hull and Deck Information 5

 Engine Information 5

GALLERY 6

DETAILED DESCRIPTION 14

CONTACTS 19

OVERVIEW

Trade-in offers are welcome. Meticulously maintained and from the late-production run, this 2022 VQ58 is being offered as the owner upgrades to a larger yacht—an uncommon chance to acquire a nearly new Vanquish 58. She shows just 550 hours on twin Volvo IPS950s and is richly optioned with a VQ11 tender, premium custom audio, bow thruster and numerous other upgrades. Owner financing may be available, and U.S. duty is paid.

Inside, the layout provides two sleeping areas: a versatile salon with a convertible settee alongside a generous primary stateroom, delivering refined comfort for weekend cruises or elegant dayboat excursions. The IPS950 package propels her to an effortless 28-knot cruising speed with a top end of approximately 41 knots, combining efficient range with exhilarating handling. In February 2025 she received full main-engine and IPS drive services, a comprehensive generator service, and a professional four-step polish and wax over the entire yacht, leaving this contemporary sport yacht turnkey and beautifully prepared for the season ahead.

SPECIFICATIONS

Basic Information

Model Year:
2022

Country:
United States

Year Built:
2022

Dimensions

LOA:
58' 0" (17.68 m)

Max Draft:
14' 9" (4.50 m)

Beam:
16' 0" (5.08 m)

Speed, Capacities and Weight

Cruise Speed:
28 Knots (32.22 MPH)

Water Capacity:
105 Gallons

Max Speed:
41 Knots (47.18 MPH)

Fuel Capacity:
400 Gallons

Accommodations

Total Heads:
1

Hull and Deck Information

Hull Material:
Aluminum Yachts

Hull Designer:
N/A

Deck Material:
Aluminum

Interior Designer:
N/A

Hull Configuration:
N/A

Engine Information

Engines:
2

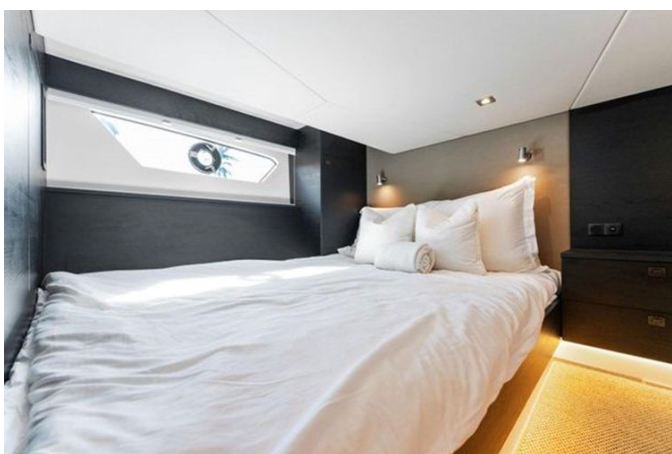
Engine Type:
Inboard

Manufacturer:
Volvo

Fuel Type:
Diesel

GALLERY

















DETAILED DESCRIPTION

Introduction

The VQ58 is designed around generous outdoor living, with expansive deck areas and a capacious sun platform that together provide unrivaled lounging for up to twenty-three guests. Wide, secure gangways ensure ease of movement and a reassuring sense of safety as visitors circulate the exterior, while the aft deck is distinguished by an alfresco dining arrangement anchored by a table for ten—an exceptional feature rarely encountered on a motoryacht of this size. Access to the lower deck is found via stairs located forward of the helm on the port side, leading into a main cabin that offers a luxurious lounging and dining space which effortlessly converts into a master bed. Midships, a private cabin houses two queen beds and abundant storage, and the head and shower are conveniently sited at the foot of the stairs to provide straightforward access from both the staircase and the sleeping quarters.

Main cabin with convertible sofa

The main cabin has been conceived as a gracious, flexible living space where the comfortable sofa seating converts smoothly into the master bed, creating a private sleeping retreat whenever needed. A Coriander sink with a dedicated wash basin supplies cold water on demand, while a large refrigerator and a built-in microwave make provisioning and simple meal preparation effortless. Well-proportioned lockers for clothing keep personal belongings neatly stowed, and soft indirect lighting lends a sophisticated, ambient glow throughout. Practical conveniences include 110 volt sockets and USB charger points, complemented by an in-cabin Raymarine 7-inch control screen for clear, intuitive monitoring. Climate comfort comes courtesy of air conditioning, and a height-adjustable dining table adapts easily for relaxed lounging or

intimate meals.

Master stateroom - full beam

The full-beam master stateroom is appointed with two queen beds set to port and starboard, arranged within an expansive footprint and bathed in warm, indirect lighting that creates an inviting atmosphere. A dedicated locker for clothing keeps garments neatly stowed and the suite uncluttered, while practical modern comforts—110-volt sockets, a USB charging point and air conditioning (AC)—are discreetly integrated to ensure effortless convenience.

Head

Designed for privacy and effortless comfort, the head is equipped with an electric flush toilet and a separate shower cabin fitted with a soothing rain shower. The washbasin is installed in a coriander sink and supplies both warm and cold water, while a contemporary-design mirror provides a polished touch. A dedicated fan ensures continuous ventilation and soft, indirect lighting envelops the space in a serene, spa-like atmosphere.

Instruments and electrical systems

At the helm, two twelve-inch Garmin cockpit displays are neatly recessed into the console to provide integrated navigation and engine monitoring, paired with a power steering system that ensures precise, effortless control. Onboard refinement continues with a Fusion stereo offering iPad and iPhone connectivity plus a dedicated subwoofer for a rich audio experience, while Dometic Cruise Air AC maintains interior comfort; the vessel's 24V electrical architecture is supported by a generator set 8000 I, and a bow thruster delivers sure, confident maneuvering.

Hull and deck

The hull is fashioned from robust marine 5083 aluminum and receives an Awlgrip superyacht paint finish without metallic pigments, while the deck and surrounding walk-around are surfaced in Flexiteek and engineered with a self-draining system for effortless upkeep. Mooring is handled with eleven pop-up cleats, supported by a full complement of fenders, shore lines and lifejackets to complete the deck outfit. Thoughtful conveniences include a 110-volt socket in the cockpit and multiple USB charging points, with additional USB outlets positioned at the bow lounge for easy access. Ambient and operational lighting is discreetly integrated via LED floor lights set in stainless-steel housings, complemented by Lopo navigation lights for safe passage. Entertaining is made seamless with tables fitted with cupholders, two refrigerators—one tucked beneath the driver's bench and the other beneath the sink in the outdoor kitchen—and the comfort of a fresh-water deck shower for post-swim rinses.

Foredeck and walk-around

A gracious bow lounge is fitted with an adjustable-height dining table, providing an intimate, refined setting for relaxed conversation or stylish alfresco dining. The continuous walk-around incorporates a 75 centimeters depth, measured from floor level to the highest point of the hull, delivering a clear and comfortable passage along the deck.

Safety

Meticulously appointed for confidence at sea, the yacht carries twelve life vests and features an automatic fire-extinguishing system in the engine room, complemented by a three-compartment automatic bilge pump system to

provide dependable protection and serene reassurance on every passage.

Garage on stern

The meticulously engineered stern garage is designed to accommodate either a Williams 285 or a Vanquish VQ11, enabling seamless launch and retrieval via an automatic winch operated by remote control, while a purpose-built lounging frame converts the area into a tranquil waterside retreat when at anchor.

Anchor system

The sub-marine automatic anchor system converts mooring into a smooth, effortless routine by simplifying both setting and retrieval with elegant precision. The automatic anchor winch handles a 40-meter stainless-steel chain coupled to a substantial 25 kg pool anchor, ensuring reliable holding power and seamless recovery. Full control of the system is provided via remote, enabling precise operation from any location on board.

Options

Specified for intuitive handling and refined comfort, this yacht is fitted with Volvo DPS / Skyhook and a Volvo trim system by Humphree, with dedicated air conditioning at the dashboard for a cool, focused helm. Navigation and situational awareness are elevated by a black Garmin radar system installed on the design support spoiler, a black FLIR Night Vision M232 and a black Marince search light. On deck, shade and lounging are elegantly arranged: a sun shade cover shelters the forward dining table on carbon awning poles, with an extending shadow cover reaching to the stern, likewise supported by carbon awning poles. Boarding and water access are simplified by the hydraulic

passarelle and swim ladder combination Bezenoni SP607, while a carbon shower stand on the swim platform provides a polished finishing detail. Entertaining is seamless with an ice cube maker producing 20 kg per 24 hours, a table mounted on an isolated support and a hatch designed to accommodate bottles in ice.

Below, the full-beam cabin is appointed for comfortable overnighting with two queen beds located under the cockpit floor on port and starboard and an extra large wine cooler within the cabin. A bespoke audio installation ensures immersive sound, featuring a subwoofer housed in the bench by the table under the T-Top, four speakers beneath the T-Top, and an additional subwoofer with ten-inch speakers distributed throughout. The exterior presents a striking presence with hardtop paint in black and glass tinted with gray sun block, while underwater lighting along the hull sides, beginning at one-third of the transom, casts an alluring glow when at anchor. Practical luxuries include an extra back-rest cushion on the sunbed in front of the window, and the package is completed by the capable Vanquish VQ11 tender.

Disclaimer

These particulars are presented in good faith; however, no warranty is made as to the accuracy of the information provided or the condition of the vessel. Prospective purchasers are urged to instruct their brokers or independent surveyors to verify any matters they regard as material. This yacht is offered subject to prior sale, alteration of price, or withdrawal from the market without notice.

CONTACTS

Shestakov Yacht Sales is a brokerage company specializing in the sale and service of yachts worldwide. The company offers services for buying and selling both new and used motor yachts, sailing vessels, and luxury superyachts. They also provide yacht registration, insurance, technical maintenance, crew selection, and charter organization services across the U.S., Canada, Latin America, the Caribbean, and the Bahamas.

The founder and lead broker of the company is Andrey Shestakov, a licensed and certified expert with extensive experience in marine engineering and shipbuilding.

The company has an extensive network of partnerships with major yacht manufacturers worldwide and provides services in multiple languages, including Russian, Ukrainian, Spanish, and English. The office is in Dania Beach, Florida, USA.

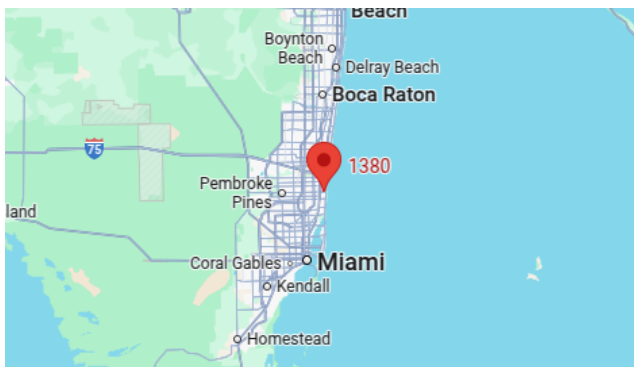
For more information and to view available yachts, you can visit the company's official website: <https://shestakovyachtsales.com>

Contact details

Phone: +1(954)274-4435

Email: andrey@shestakovyachtsales.com

Address



1380 Weeping Willow Way, Hollywood,
Florida 33019