



SHESTAKOV

Yacht Sales

## ONE MORE TIME - SEA RAY



**Builder:** [SEA RAY](#)

**LOA:** 58' 0" (17.68 m)

**Year Built:** 2007

**Beam:** 16' 0" (4.88 m)

**Model:** N/A

**Min Draft:** 14' 1" (4.30 m)

**Price:** \$650,000 USD Subject to change.

**Max Draft:** 14' 9" (4.50 m)

[See full listing on our website](#)

**Location:** Fort Myers, United States

**Cruising Speed:** 24 Knots (27.62 MPH)

**Max Speed:** 33 Knots (37.98 MPH)

If you would like to buy a yacht **ONE MORE TIME - SEA RAY** or would like help answering any questions concerning purchasing, selling, or chartering a yacht, please call **+1(954)274-4435** or click here on <https://shestakovyachtsales.com>

---

# TABLE OF CONTENTS

---

<b>OVERVIEW .....</b>	<b>3</b>
<b>SPECIFICATIONS .....</b>	<b>4</b>
Basic Information .....	4
Dimensions .....	4
Speed, Capacities and Weight .....	4
Accommodations .....	5
Hull and Deck Information .....	5
Engine Information .....	5
<b>GALLERY .....</b>	<b>6</b>
<b>DETAILED DESCRIPTION .....</b>	<b>13</b>
<b>CONTACTS .....</b>	<b>15</b>

## OVERVIEW

---

Savor life aboard this 2007 Sea Ray 58 Sedan Bridge, a flybridge motor yacht cherished in freshwater until 6/2024 before making the passage from the Great Lakes to Fort Myers, Florida. Presented in exceptional condition both inside and out, she benefited from all MAN factory-prescribed services in 2025 and received a fresh annual service in 2026, providing turnkey assurance for the next owner. Her freshwater heritage is evident throughout; the machinery space is unusually clean and a genuine highlight, while the interior joinery remains crisp with no milking or delamination. The helm has been modernized with an upgraded Garmin electronics suite, bringing contemporary navigation capability to a timeless platform and creating a rare opportunity for those seeking a premium Sea Ray Sedan Bridge.

Underway, twin MAN 900 diesel engines deliver 861 hp, a refined and responsive propulsion package that yields smooth, quiet performance. Poised and well-balanced, she tracks straight and glides with the calm composure experienced yachtsmen expect from a thoughtfully engineered sedan bridge. Craftsmanship and finish define the onboard experience; elegant lines and meticulous fit and finish speak to Sea Ray's attention to detail, where every surface and joinery detail reflects careful execution and enduring style. The interior is arranged for comfort and sophisticated entertaining, with premium materials and thoughtful amenities creating a serene retreat for coastal cruising or weekend escapes.

Now available at MarineMax Fort Myers in Fort Myers, FL.

# SPECIFICATIONS

---

## Basic Information

---

**Model Year:**  
2007

**Country:**  
United States

**Year Built:**  
2007

## Dimensions

---

**LOA:**  
58' 0" (17.68 m)

**Beam:**  
16' 0" (4.88 m)

**Min Draft:**  
14' 1" (4.30 m)

**Max Draft:**  
14' 9" (4.50 m)

## Speed, Capacities and Weight

---

**Cruise Speed:**  
24 Knots (27.62 MPH)

**Water Capacity:**  
150 Gallons

**Max Speed:**  
33 Knots (37.98 MPH)

**Fuel Capacity:**  
700 Gallons

**Gross Tonnage:**  
45.5 Pounds

## Accommodations

---

**Sleeps:**

5

**Crew Cabin:**

1

**Total Heads:**

2

**Crew Berths:**

1

## Hull and Deck Information

---

**Hull Material:**

Fiberglass and Plastic Yachts

**Hull Designer:**

Sea Ray

**Deck Material:**

Fiberglass

**Interior Designer:**

Sea Ray

**Hull Configuration:**

Deep Vee

## Engine Information

---

**Engines:**

2

**Engine Type:**

Inboard

**Manufacturer:**

MAN

**Fuel Type:**

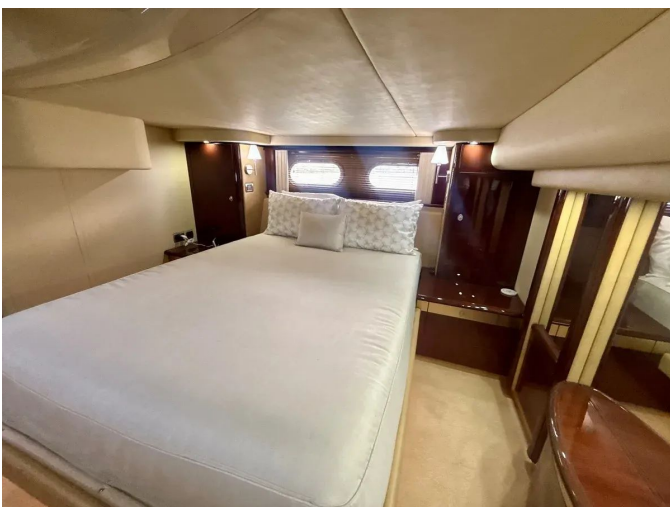
Diesel

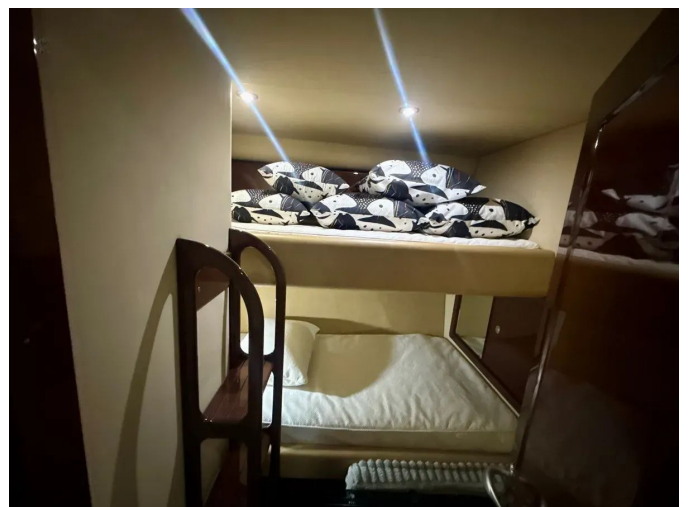
# GALLERY















---

# DETAILED DESCRIPTION

---

## Additional specs

---

Propulsion is supplied by twin MAN V8-900 engines, the starboard unit displaying 1,409 hours and the port unit 1,404 hours, while auxiliary power is provided by an Onan generator, model 21.5MDKBR – 5832B, which has logged 1,990 hours. The salon and galley are appointed for both comfort and long-range convenience, featuring an Isotherm Dual refrigerator alongside a separate Isotherm freezer, a Tappan microwave, a Kenyon two-burner stove and a secondary Norcold refrigerator, supported by a 12V fan, central vacuum system and an onboard GE washer/dryer to ensure extended cruising is effortless.

The interior has been arranged to promote smooth circulation and privacy throughout. In the main salon the entertainment center is located aft to starboard while the primary electrical panels sit aft to port, and built-in sofas on each side include under-cushion storage. Moving forward and up one level presents the dinette to port and the galley to starboard, and continuing forward and descending five steps brings you to the accommodation deck. The forward VIP stateroom offers a center island berth, a privacy door leading to the head aft to port, and a dedicated shower aft to starboard, complemented by a closet plus under-bed and side storage cabinets. Aft to port is the guest head with a laundry closet to starboard, and to starboard a compact crew/guest cabin provides high/low bunks. The master stateroom is situated aft with a generous bed, its head positioned forward to port, and ample closet and under-bed storage.

Navigation and helm systems are comprehensive, anchored by a Garmin suite that includes a VHF 200, a GPSMAP 7612 XSV paired with an additional GPSMAP 7612, fathometer functions delivered through the GPSMAP 7612 XSV

and a Garmin Digital unit, and radar displayed on the GPSMAP 7612 XSV. A Garmin autopilot eases longer passages, while a single four-inch Ritchie compass, a 12V horn and an ACR-URP-102 search light provide added assurance at the helm; safety at sea is further reinforced by an ACR 406 MZ E.P.I.R.B.

Fire protection and alarms are robust, with a Sea Fire FE 241 built-in suppression system in the engine room, two portable extinguishers serving the flybridge and master stateroom, a carbon monoxide monitor and a Sea Fire alarm. Additional equipment enhances onboard living and operations, from a hydraulic lift platform, bridge deck carpeting and an electric oil change system to a Sea Ray Systems Monitor alarm for vigilant systems oversight. Shoreside convenience is provided by a dockside phone/TV hook-up, and entertainment is supported by a KVH Trac Vision satellite system and a marine TV antenna. Practical essentials such as windshield covers, boat fenders, spare lines, boat hooks, a bridge console cover and a Glendenning Cable Master are included to keep the vessel orderly and ready. Maneuvering is simplified with Vetus bow and stern thrusters and a Yacht Controller, while deck comfort is assured by a factory fiberglass hard top with a full Eisenglass curtain enclosure and an additional bimini top over the cockpit. Finally, onboard electrical stability is maintained by an ANG 12.5 boost transformer.

# CONTACTS

---

Shestakov Yacht Sales is a brokerage company specializing in the sale and service of yachts worldwide. The company offers services for buying and selling both new and used motor yachts, sailing vessels, and luxury superyachts. They also provide yacht registration, insurance, technical maintenance, crew selection, and charter organization services across the U.S., Canada, Latin America, the Caribbean, and the Bahamas.

The founder and lead broker of the company is Andrey Shestakov, a licensed and certified expert with extensive experience in marine engineering and shipbuilding.

The company has an extensive network of partnerships with major yacht manufacturers worldwide and provides services in multiple languages, including Russian, Ukrainian, Spanish, and English. The office is in Dania Beach, Florida, USA.

For more information and to view available yachts, you can visit the company's official website: <https://shestakovyachtsales.com>

## Contact details

---

**Phone:** +1(954)274-4435

**Email:** [andrey@shestakovyachtsales.com](mailto:andrey@shestakovyachtsales.com)

## Address

---



1380 Weeping Willow Way, Hollywood,  
Florida 33019