

# SUNSEEKER PREDATOR 57 - SUNSEEKER



**Builder:** [Sunseeker](#)

**LOA:** 59' 0" (18.01 m)

**Year Built:** 2016

**Beam:** 15' 0" (4.70 m)

**Model:** Predator 57

**Min Draft:** 13' 8" (4.17 m)

**Price:** \$987,186.71 USD Subject to change.

**Max Draft:** 13' 1" (4 m)

[See full listing on our website](#)

**Location:** Swanwick, United Kingdom

**Cruising Speed:** 27 Knots (31.07 MPH)

**Max Speed:** 30 Knots (34.52 MPH)

---

# TABLE OF CONTENTS

---

<b>OVERVIEW .....</b>	<b>3</b>
<b>SPECIFICATIONS .....</b>	<b>4</b>
Basic Information .....	4
Dimensions .....	4
Speed, Capacities and Weight .....	4
Accommodations .....	5
Hull and Deck Information .....	5
Engine Information .....	5
<b>GALLERY .....</b>	<b>6</b>
<b>DETAILED DESCRIPTION .....</b>	<b>12</b>
<b>CONTACTS .....</b>	<b>15</b>

## OVERVIEW

---

A striking example of the Sunseeker Predator 57, this sleek sports cruiser and express motor yacht, "Cool Water", is offered in excellent condition; Mediterranean delivery can be arranged and part exchange will be considered. The boat is single owner from new and is propelled by the desirable 900 hp Volvo Penta D13s, providing assured performance and effortless low speed handling aided by proportional bow and stern thrusters and a Yacht Controller remote system.

A Williams 325 Turbojet tender, shown in the photographs, may be purchased by separate negotiation, with further particulars available on request. The specification is comprehensive for a luxury motor yacht, including a generator and Med spec air conditioning, a full Simrad navigation and communications suite, a hydraulic passerelle and a capacious tender garage with integrated launch and recovery.

Internally the layout is both practical and refined, with two double cabins each with en suite facilities, a twin bunk cabin and an aft crew cabin, all appointed in upgraded American Walnut cabinetry. The galley features a custom extended linear worktop with a washer dryer and a wine cooler discreetly stowed beneath.

A generous cockpit with aft sunpad is arranged for relaxed entertaining and protected by a full canvas enclosure and a retractable fabric sun canopy. Sliding cockpit doors and a drop down aft window combine to form a single, expansive upper deck living area that seamlessly unites saloon and cockpit—an elegant hallmark of a modern performance yacht and hardtop cruiser.

# SPECIFICATIONS

---

## Basic Information

---

**Category:**  
Motor yachts

**Year Built:**  
2016

**Sub category:**  
Motor Yacht

**Country:**  
United Kingdom

**Model Year:**  
2016

## Dimensions

---

**LOA:**  
59' 0" (18.01 m)

**Beam:**  
15' 0" (4.70 m)

**Min Draft:**  
13' 8" (4.17 m)

**Max Draft:**  
13' 1" (4 m)

## Speed, Capacities and Weight

---

**Cruise Speed:**  
27 Knots (31.07 MPH)

**Water Capacity:**  
158.5 Gallons

**Max Speed:**  
30 Knots (34.52 MPH)

**Fuel Capacity:**  
581.18 Gallons

## Accommodations

---

**Sleeps:**

6

**Crew Berths:**

1

**Total Heads:**

2

## Hull and Deck Information

---

**Hull Material:**

Fiberglass and Plastic Yachts

**Hull Designer:**

N/A

**Deck Material:**

GRP

**Interior Designer:**

N/A

**Hull Configuration:**

Deep Vee

## Engine Information

---

**Engines:**

2

**Engine Type:**

Inboard

**Manufacturer:**

Volvo Penta

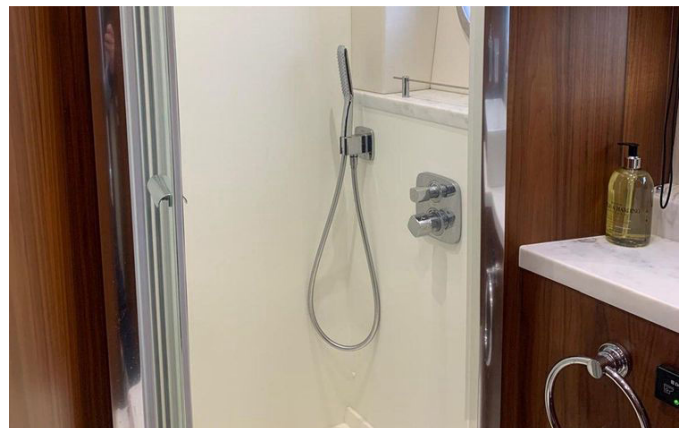
**Fuel Type:**

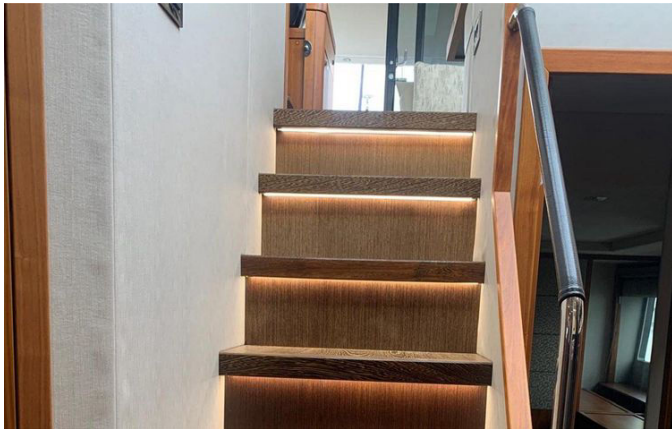
Diesel

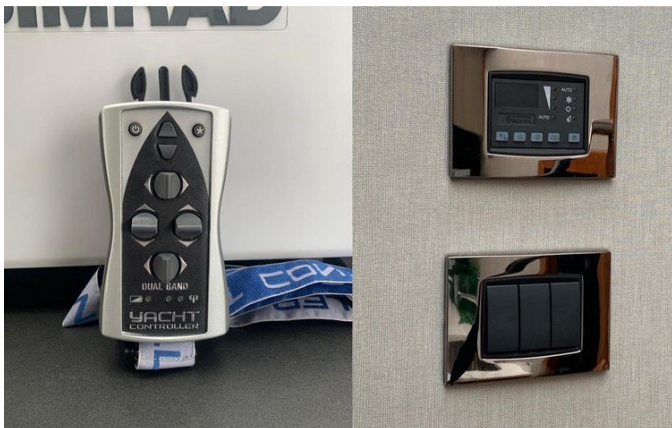
# GALLERY













---

# DETAILED DESCRIPTION

---

## About this Sunseeker Predator 57

---

"COOL WATER" is a beautifully kept example of Sunseeker's highly successful Predator 57, built and delivered in 2016 to her first and only owner from new. Specified with the larger option twin Volvo D13 900hp diesel engines on shafts, she delivers the effortless, authoritative performance the model is known for, aided by proportional bow and stern thrusters and the additional ease of a Yacht Controller remote system for stress free docking. A full Mediterranean specification brings upgraded generator, reverse cycle air conditioning, docking winches, an upgraded anchor winch, a Premium Simrad navigation package, dishwasher, washer/dryer, wine cooler, upgraded AV system, hydraulic passerelle and more. Inside, satin black American walnut cabinetry, cream leather sofas and Wenge flooring set a sophisticated tone throughout, and a custom lower deck extended galley module adds valuable storage in lieu of a lower dinette. She sleeps six in three cabins plus a single crew, with a midships master stateroom offering a centreline island double berth, a linear sideboard to port with storage beneath, and dual seats with breakfast table to starboard, complemented by a full height hanging locker and AV system. The en suite heads features a separate shower stall, electric vacuum flush toilet and hand basin. Forward, the VIP guest cabin also enjoys a centreline island double berth, high level storage lockers either side of the bed, an access hatch to the foredeck, a hanging locker and AV system, served by an en suite heads which also has secondary access from the lower deck lobby to function as a day head and for third cabin access, with separate shower stall, electric vacuum flush toilet and hand basin. The third cabin to starboard is arranged with twin bunk beds running fore and aft, a hanging locker and AV system. From build, the lower deck dinette seating area was reimaged as a linear sideboard

integrating a washer/dryer, wine cooler and additional storage, with a countertop finished to match the main galley so the whole lower area reads as one highly usable space. On the main deck, the upper saloon welcomes with U shaped leather seating and an expanding top table to port, while to starboard a linear sideboard houses a drinks cupboard, cool box and a high low TV system, all forward of dual black leather helm and co pilot seats fronting a fully equipped helm console. An electro hydraulic lowering patio door and window system transforms the deck saloon and cockpit into one expansive entertaining zone, flowing aft to a huge open cockpit with fixed dining table and an expansive sunpad.

## Additional extras

---

The options list is exhaustive and thoughtfully curated. Ground tackle begins with 90 metres of galvanised 9.5 mm anchor chain, an additional pair of 10 inch oval mooring cleats and an ensign pole, paired to a Lewmar 32kg stainless steel Delta anchor served by an upgraded Lewmar V5GD 24V anchor winch, while low level LED side deck lights, eight per side, elegantly illuminate the walkways. The aft deck benefits from an electric sunshade and a separate electric canopy for the aft cockpit. Onboard comfort is assured by hi spec European air conditioning, bow sunbathing cushions with folding backrests, sprung mattresses for the beds and forward and master cabin headboards upholstered in Vescom Shannon material, plus a crew cabin fitout providing space for a single berth with a pull out hand basin and toilet. At the wet bar you will find a sink and fridge, an icemaker with a dedicated water purifier, and a marine electric BBQ grill, complemented by a slimline wine cooler; in the galley and utility spaces there is a Miele 220V slimline dishwasher and a Miele Novotronic washer/dryer. Entertainment and connectivity are elevated by an upgraded Performance AV package with TVs to all cabins, the lower galley space and the deck saloon, Apple TV in the master cabin and saloon, and a

Pepwave onboard router system. The helm and navigation suite centres on dual Simrad NSS16 evo2 colour 16 inch multifunction touchscreen chartplotter displays with Simrad GS25 GPS, supported by a Simrad autopilot with QS80 pilot controller, a Simrad IS40 speed/depth instrument with BSM 1 fishfinder sounder module and B744V depth/speed/temperature transducer, a Simrad RS90 VHF radio with DSC, a Simrad NAIS400 Class B transponder and a Simrad GoFree WiFi module, all overseen by a Simrad TX 06S 6kW 4 foot open array radar scanner atop a radar mast painted black; there is also a remote control spotlight and a Volvo Penta single 7 inch colour display for the shaft engines, together with Volvo Penta trip control, cruise control and single lever control. Close quarters handling is effortless thanks to proportional bow and stern thrusters, stern docking winches, a Yacht Controller remote engine and thruster system, hydraulic trim tabs, a tilt steering wheel and a Glendinning Cablemaster for tidy and simple shore power management. Practical detailing includes a hydraulic telescopic gangway, a tender recovery roller system and a Williams launch and recovery system in the garage with sliding shuttle and electric winch, an engine bay automatic fire extinguisher system, a pressurised hot and cold fresh water system with calorifier heating plus a fresh water deck wash system, underwater Aqualuma LED wide angle lights four, a stainless steel pulpit and side rails, Wenge flooring to the lower lobby, companionway stairs and upper deck areas, and an upgraded Cummins Onan generator.

# CONTACTS

---

Shestakov Yacht Sales is a brokerage company specializing in the sale and service of yachts worldwide. The company offers services for buying and selling both new and used motor yachts, sailing vessels, and luxury superyachts. They also provide yacht registration, insurance, technical maintenance, crew selection, and charter organization services across the U.S., Canada, Latin America, the Caribbean, and the Bahamas.

The founder and lead broker of the company is Andrey Shestakov, a licensed and certified expert with extensive experience in marine engineering and shipbuilding.

The company has an extensive network of partnerships with major yacht manufacturers worldwide and provides services in multiple languages, including Russian, Ukrainian, Spanish, and English. The office is in Dania Beach, Florida, USA.

For more information and to view available yachts, you can visit the company's official website: <https://shestakovyachtsales.com>

## Contact details

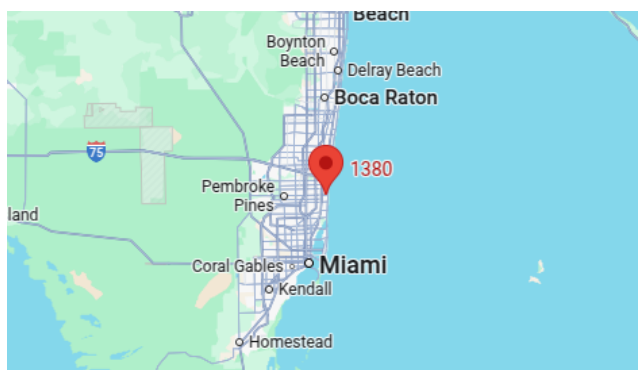
---

**Phone:** +1(954)274-4435

**Email:** [andrey@shestakovyachtsales.com](mailto:andrey@shestakovyachtsales.com)

## Address

---



1380 Weeping Willow Way, Hollywood,  
Florida 33019