

## 2006 MARQUIS 59 - MARQUIS



**Builder:** [Marquis](#)

**Beam:** 16' 0" (5 m)

**Year Built:** 2006

**Max Draft:** 14' 6" (4.42 m)

**Model:** 59

**Price:** \$529,000 USD Subject to change.

[See full listing on our website](#)

**Location:** Pompano Beach, United States

**LOA:** 59' 0" (17.98 m)

---

# TABLE OF CONTENTS

---

<b>OVERVIEW .....</b>	<b>3</b>
<b>SPECIFICATIONS .....</b>	<b>5</b>
Basic Information .....	5
Dimensions .....	5
Speed, Capacities and Weight .....	5
Accommodations .....	5
Hull and Deck Information .....	6
Engine Information .....	6
<b>GALLERY .....</b>	<b>7</b>
<b>DETAILED DESCRIPTION .....</b>	<b>21</b>
<b>CONTACTS .....</b>	<b>23</b>

## OVERVIEW

---

Preliminary listing — more photos and details to follow.

A commanding presence tempered by quiet assurance defines this 2006, 59-foot motor yacht, a United States-based luxury cruiser conceived for those who value seakeeping, economy, and graceful comfort. Her generous 16-foot beam and purposeful semi-displacement hull marry the stability and efficiency of a true bluewater platform with the ability to quicken when conditions and company invite a livelier pace, delivering composed performance at displacement speeds and responsive handling when urged. Twin MTU diesel inboards provide robust, dependable propulsion while an 800-gallon fuel supply grants extended range for coastal passages, island-hopping, and longer adventures; a substantial draft further enhances offshore steadiness and complements the hull's soft, predictable motion.

Built with a fiberglass composite hull and a fiberglass deck, she emphasizes durability, longevity, and straightforward upkeep, creating a hull form that feels solid beneath the feet, quietly confident underway, and welcoming at anchor. That broad beam produces generous interior volume and roomy outdoor areas for dining, lounging, and entertaining, whether hosting a sunset cocktail hour on the aft deck or settling into an unhurried weekend cruise with family and friends.

Inside, warm, contemporary styling is suffused with natural light, generous headroom, and well-considered sightlines that invite lingering conversation in the salon. The galley, arranged for real cruising, places everything within easy reach for efficient service and convivial meals. Private accommodations offer a tranquil retreat for owners and guests, supported by two well-appointed heads that enhance livability on extended trips. With 200 gallons of fresh water aboard, the yacht is equally suited to spontaneous getaways and more deliberate liveaboard ambitions.

An owner-operator ethos informs every detail, from predictable handling and easy engine-room access to systems laid out with practical sense, making single-handed or crewed operation equally straightforward. From quiet evenings on the aft deck to confident passages between harbors, this semi-displacement motor yacht blends the calm composure of a serious cruiser with the polish of a luxury yacht. Poised for inspection in the United States, she presents an appealing option for discerning yachtsmen seeking a bluewater-capable semi-displacement cruiser and comfortable liveaboard platform for coastal cruising, island-hopping, and extended time on the water.

# SPECIFICATIONS

---

## Basic Information

---

**Category:**  
Motor yachts

**Year Built:**  
2006

**Sub category:**  
Motor Yacht

**Country:**  
United States

**Model Year:**  
2006

## Dimensions

---

**LOA:**  
59' 0" (17.98 m)

**Max Draft:**  
14' 6" (4.42 m)

**Beam:**  
16' 0" (5 m)

## Speed, Capacities and Weight

---

**Water Capacity:**  
200 Gallons

**Fuel Capacity:**  
800 Gallons

## Accommodations

---

**Total Heads:**  
2

## Hull and Deck Information

---

**Hull Material:**

Fiberglass and Plastic Yachts

**Hull Designer:**

N/A

**Deck Material:**

Fiberglass

**Interior Designer:**

N/A

**Hull Configuration:**

Semi-Displacement

## Engine Information

---

**Engines:**

2

**Engine Type:**

Inboard

**Manufacturer:**

MTU

**Fuel Type:**

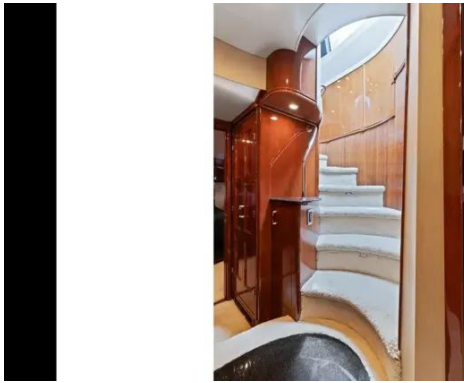
Diesel

# GALLERY







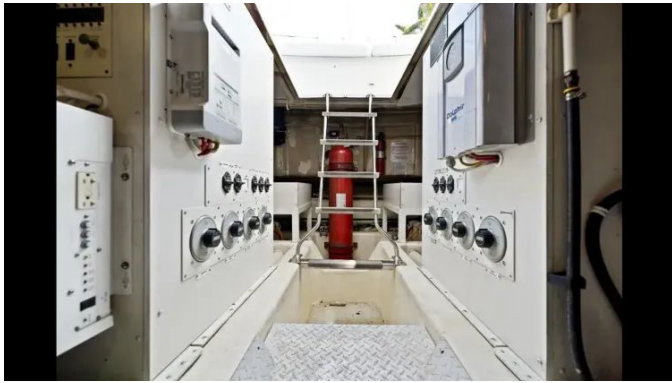




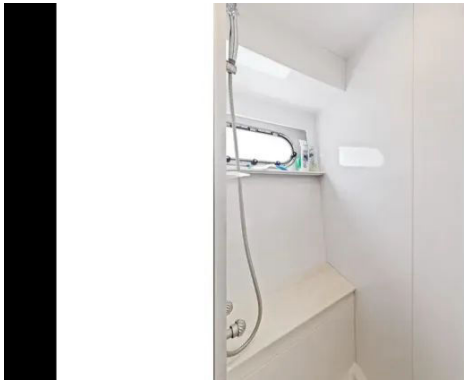




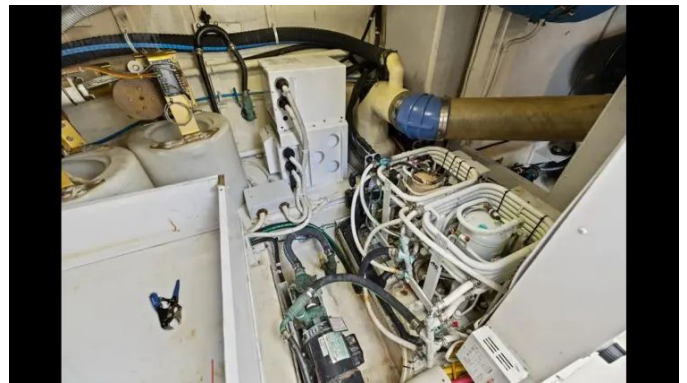
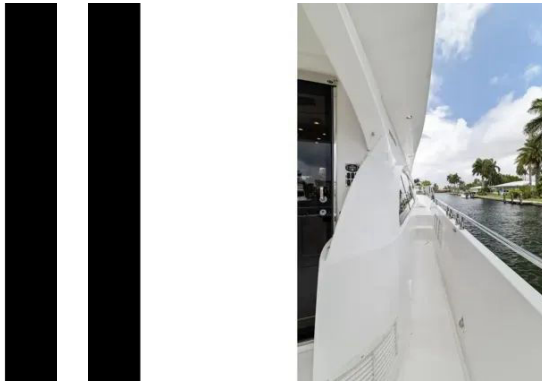
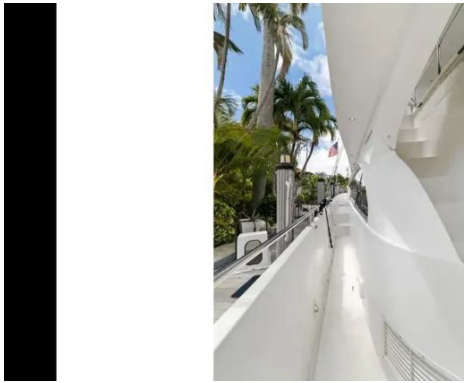














---

# DETAILED DESCRIPTION

---

## Description

---

This is a preliminary listing while final specifications, equipment details and professional photography are being completed; register your interest now to be among the first to receive the complete dossier and to arrange a private inspection at your convenience.

## Other details

---

Disclaimer: the details of this vessel are offered in good faith but are not guaranteed, and neither accuracy nor condition is warranted; prospective buyers are advised to instruct their agents or independent surveyors to verify any particulars they consider material. This vessel is offered subject to prior sale, change of price, or withdrawal without notice.

## Propulsion

---

Power is provided by twin Volvo D-12 inboard diesels, each rated at 715 hp and currently showing 975 hours, a proven installation that delivers robust, dependable performance and the composed handling expected from a well-balanced propulsion package.

## Specifications

---

Measuring 59 ft overall with a beam of 16.5 ft and 7 ft of cabin headroom, this semi-displacement fiberglass yacht offers a maximum bridge clearance of 16.25 ft and a maximum draft of 4.58 ft. The dry weight is 62,861 lb, fuel capacity is 800 gal, fresh water capacity is 200 gal, and the holding tank is 80

gal. Accommodation is arranged for comfort with three guest cabins and two heads, laid out to provide privacy and liveaboard practicality.

# CONTACTS

---

Shestakov Yacht Sales is a brokerage company specializing in the sale and service of yachts worldwide. The company offers services for buying and selling both new and used motor yachts, sailing vessels, and luxury superyachts. They also provide yacht registration, insurance, technical maintenance, crew selection, and charter organization services across the U.S., Canada, Latin America, the Caribbean, and the Bahamas.

The founder and lead broker of the company is Andrey Shestakov, a licensed and certified expert with extensive experience in marine engineering and shipbuilding.

The company has an extensive network of partnerships with major yacht manufacturers worldwide and provides services in multiple languages, including Russian, Ukrainian, Spanish, and English. The office is in Dania Beach, Florida, USA.

For more information and to view available yachts, you can visit the company's official website: <https://shestakovyachtsales.com>

## Contact details

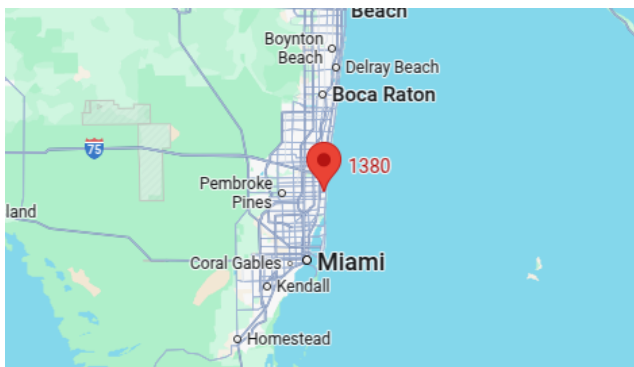
---

**Phone:** +1(954)274-4435

**Email:** [andrey@shestakovyachtsales.com](mailto:andrey@shestakovyachtsales.com)

## Address

---



1380 Weeping Willow Way, Hollywood,  
Florida 33019