



SHESTAKOV

Yacht Sales

CONTANGO - VIKING



Builder: [VIKING](#)

Beam: 18' 0" (5.72 m)

Year Built: 2012

Max Draft: 16' 8" (5.08 m)

Model: 60 CONVERTIBLE

Cruising Speed: 32 Knots (36.83 MPH)

Price: \$2,049,000 USD Subject to change.

[See full listing on our website](#)

Location: Playa Herradura, Costa Rica

LOA: 60' 0" (18.49 m)

If you would like to buy a yacht **CONTANGO - VIKING** or would like help answering any questions concerning purchasing, selling, or chartering a yacht, please call **+1(954)274-4435** or click here on <https://shestakovyachtsales.com>

TABLE OF CONTENTS

OVERVIEW	3
SPECIFICATIONS	4
Basic Information	4
Dimensions	4
Speed, Capacities and Weight	4
Hull and Deck Information	5
Engine Information	5
GALLERY	6
DETAILED DESCRIPTION	25
CONTACTS	34

OVERVIEW

Contango is an exquisite 2012 Viking 60 Convertible flybridge sportfishing yacht, presenting an impressive slate of recent enhancements highlighted by a Seakeeper 16. Maintained to exceptionally high mechanical and cosmetic standards, she is equipped comprehensively and displays outstanding condition—truly a premium bluewater battlewagon for the serious angler. February 2023 service included the addition of a glossy black mask, fresh bottom paint, replacement rudder bearings, and new carpeting throughout the interior; in November 2023 both the Onan generator and the CAT engines received their 5,000-hour service, and the interior woodwork was refinished in December 2023. Lying in her home slip at Los Sueños Resort and Marina, Costa Rica, she is turnkey, available to show, and ready to cruise or fish offshore at a moment's notice.

SPECIFICATIONS

Basic Information

Model Year:
2012

Country:
Costa Rica

Year Built:
2012

Dimensions

LOA:
60' 0" (18.49 m)

Max Draft:
16' 8" (5.08 m)

Beam:
18' 0" (5.72 m)

Speed, Capacities and Weight

Cruise Speed:
32 Knots (36.83 MPH)

Fuel Capacity:
1646 Gallons

Water Capacity:
300 Gallons

Hull and Deck Information

Hull Material:

Fiberglass and Plastic Yachts

Hull Designer:

N/A

Deck Material:

Fiberglass

Interior Designer:

N/A

Hull Configuration:

N/A

Engine Information

Engines:

2

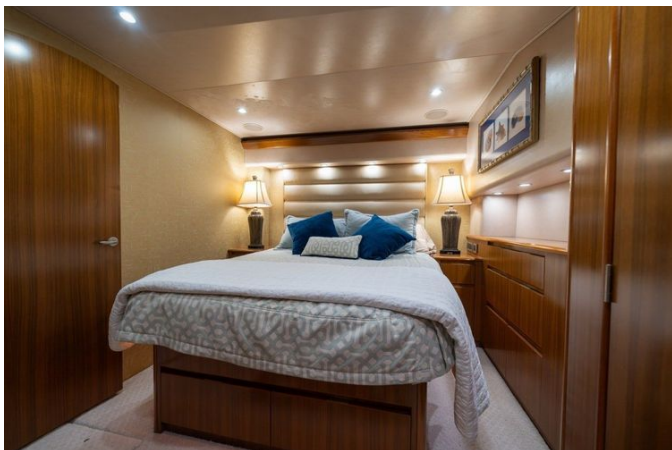
Engine Type:

Inboard

Manufacturer:

CAT

GALLERY

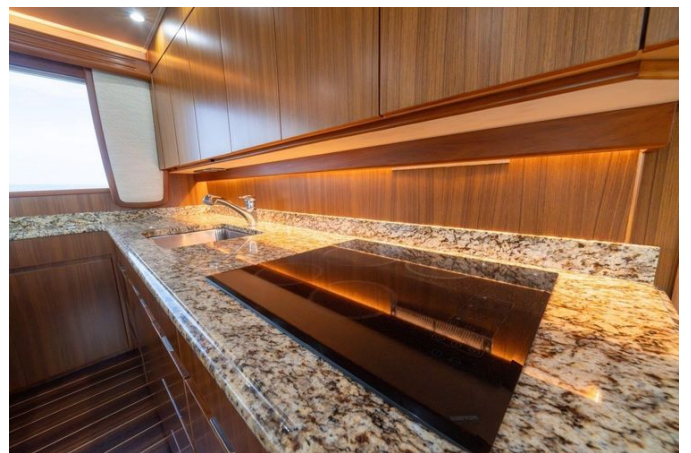






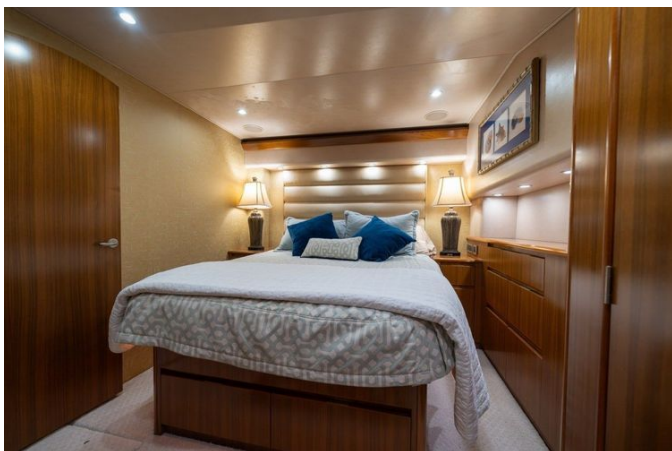








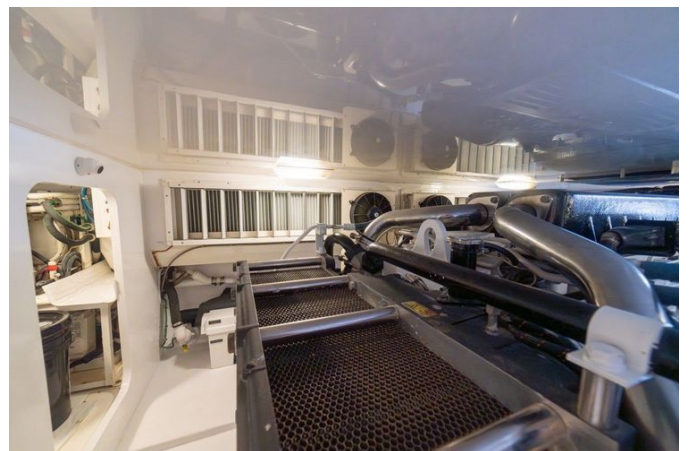
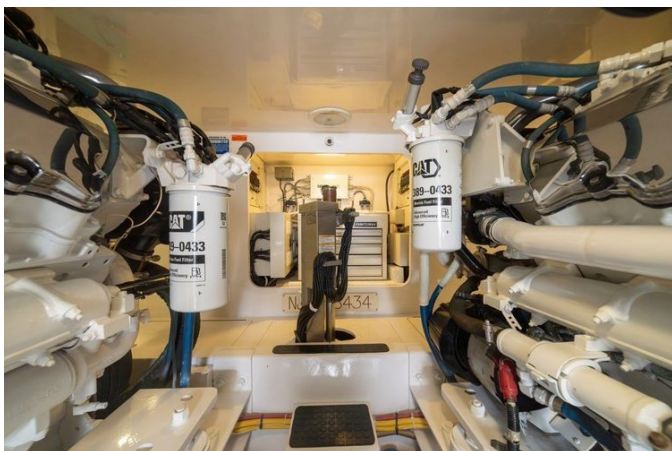
























DETAILED DESCRIPTION

Vessel highlights

Twin C32A Caterpillar engines rated at 1,925 hp, managed through the Caterpillar CP Link system and fitted with electronic trolling valves, deliver authoritative power and exceptionally precise throttle control. The interior is finished in a refined satin, while the galley and all heads are appointed with granite countertops, and accommodations include four staterooms with a forward queen and three heads, creating an inviting and sophisticated living environment. At the helm, a Garmin electronics suite with AIS works in concert with FLIR night vision to ensure confident navigation in any conditions, and offshore capability is further strengthened by an Eskimo ice chipper, a Sea Recovery water maker producing 1,400 GPD, and a DC bow thruster. Anglers will value the practical fishing amenities: air-conditioned cockpit mezzanine, durable teak decks, a transom livewell with a viewing window, US-9 teaser reels, cockpit outlets set up for kite fishing, deep-dropping or teaser reels, and two underwater lights for added attraction. Long-range cruising is supported by substantial fuel capacity carried in three tanks — main 835 gallons, mid 516 gallons, and forward 295 gallons — while exterior seating comfort has been enhanced with closed-cell construction cushions for improved durability and weather resistance.

Recent boat improvements

The yacht has benefited from a meticulous program of upgrades and refinements, each executed with an emphasis on cohesion and high-end finish. In March 2026 the bridge cushions were renewed and carefully matched to the weave of the helm chairs to create a seamless, custom look at the wheel. Earlier, in February 2025, the electronics package was comprehensively

updated with four Garmin 8617 displays and a Furuno sonar was added to improve both navigation and fish-finding capability. By July of that year all vinyl in the companionway and the forward VIP stateroom was replaced and the onboard laundry pair—washer and dryer—was renewed for reliable convenience. August saw a thorough technical refresh: the entire engine room and the engines themselves were painted, new vinyl flooring was installed and a full life raft service was completed. In September new VEEM wheels were fitted to optimize propulsion performance, and in December the Seakeeper 16 was replaced with the purchase of the maximum warranty, extending coverage to a full five years.

The aesthetic renewal that began in June and July 2024 transformed both interior and exterior. In the salon every soft good—the sofa, chairs and pillows—was refreshed, a new headliner installed and window lambrequins updated; protective, matching covers were made for all teak tables and the salon woodwork was fully sanded and refinished to a deep, lustrous sheen. The mezzanine cushions were recovered and fitted with protective covers, the fighting chair arms were re-covered and the helm chair wood was refinished with new cushions added for comfort and style. Outside, the hull received a fresh coat of Pamlico blue, a teak faux toe rail was installed alongside stainless-steel rub rails and crisp new boot stripes were applied; the underside of the bridge top was finished in a very light grey to reduce glare, the underwater lighting was renewed to a total of four fixtures on the transom, and all rod holders were replaced to complete the exterior enhancement.

Salon

Enter the salon and be greeted by a satin interior finish, meticulously refreshed in June 2024, that imparts an atmosphere of quiet luxury. The entertainment arrangement centers on a Samsung 40" TV paired with four Sky TV receivers, while a Kenmore ice maker discreetly stands ready to cater to

guests. Rich teak valances elegantly frame the area above a generous L-shaped couch with convenient under-seat storage, and protective canvas runners guard the walkways. Bridge-style controls are within easy reach via a VHF command mic and an upright electrical panel equipped with an Octoplex system, and an automatic salon door ensures smooth, effortless access.

Galley

The galley is exquisitely appointed with a granite countertop set over durable Amtico flooring and designed for serious culinary endeavors with a Kenyon four-burner cooktop and a Sharp microwave/convection oven, while an integrated garbage disposal simplifies clean-up. Exceptional cold storage is arranged as six Sub Zero drawers configured for refrigerator and freezer use, augmented by four below counter, drawer-style Sub Zero refrigerators and two dedicated Sub Zero freezer drawers, and a Kenmore ice maker is conveniently located in the salon. For relaxed dining and conversation, two bar stools with backs line the counter and an inviting U-shaped dinette offers additional seating with useful storage beneath.

Companionway

Meticulously outfitted, the companionway features an Ariston separate washer and dryer to support extended cruising needs, paired with an additional Ariston stacked washer-dryer for versatile laundry options. A dedicated linen closet keeps bedding and essentials neatly arranged, while an integrated central vacuum system simplifies routine upkeep. Recent finish updates — new carpet flooring (2023) and refreshed padded panel wall coverings (06/2024) — enhance both the comfort and the refined aesthetic of this passage.

Companionway head

Easily reached from both the companionway and the starboard stateroom, this head is meticulously finished and designed for comfort. A full shower appointed with satin nickel fixtures is set against custom wallpaper and durable Amtico flooring, while a granite countertop with an integrated sink is complemented by a Grohe satin nickel faucet. Practical storage is provided by a cabinet beneath the sink, and a mirrored surface conceals a recessed medicine cabinet to keep essentials neatly organized. The layout is rounded out by a Dometic head and an overhead hatch that brings in natural light and fresh air.

Master stateroom

The tranquil master stateroom is anchored by a walk-around king bed with generous under-bed storage and is elegantly flanked by two nightstands, each topped with its own lamp. A full-size, cedar-lined closet and six dedicated storage drawers provide plentiful wardrobe space, while a 26-inch Insignia TV delivers effortless onboard entertainment. The suite was refreshed with new carpet installed in 2023 and is naturally brightened by a ceiling hatch; four 110V outlets are thoughtfully located to keep devices powered, and Cruisair air conditioning maintains a comfortable climate year-round.

Master stateroom head

A serene, sophisticated retreat finished with a granite countertop and satin nickel fixtures, anchored by a mirrored vanity fitted with a Grohe faucet. Practicality is woven into the design with a dedicated linen closet for organized storage, while durable Amtico flooring grounds the space and completes the luxurious, refined presentation.

VIP stateroom

The VIP stateroom is centered around a walk-around queen berth with ample under-bed storage and a Samsung TV for onboard entertainment. The cabinetry has been carefully designed, offering a cedar-lined hanging locker, four wall-mounted cabinets and two drawers beneath the berth to keep belongings organized during longer voyages. Plush carpet, installed in March 2023, refreshes the space with a refined finish, while a Cruisair A/C system delivers precise, reliable climate control. A newly made custom bedspread completes the suite with a tailored, luxurious touch.

VIP stateroom head

Sumptuously finished, the VIP stateroom head is fitted with a granite countertop that tops a mirrored vanity with a discreet cabinet below, while Grohe satin-nickel fixtures—including the Grohe faucet and matching Grohe shower hardware—deliver a refined, coordinated look. A reliable Vacu-flush head improves onboard comfort, and resilient Amtico flooring completes the space with a rich, yacht-worthy finish.

Forward stateroom

The forward stateroom is appointed with over-and-under bunks that offer adaptable sleeping configurations, while a Samsung television paired with a Sky TV receiver delivers effortless onboard entertainment. A hanging locker alongside plentiful drawer space ensures clothing and personal effects are stored neatly and kept within easy reach, and Cruisair A/C maintains an impeccably balanced interior climate. New carpet installed in 2023 completes the suite with a soft, contemporary underfoot finish.

Starboard guest stateroom

The starboard guest stateroom unfolds with a criss-cross berth layout that centers on a generously appointed double-wide lower bunk, while clever storage is provided by a hanging locker accompanied by three drawers; plush carpeting underfoot creates a warm, inviting atmosphere and climate is precisely controlled by a dedicated Cruisair air conditioning system.

Flybridge

The moment you settle into the helm, the flybridge reveals a commanding suite of navigation and control systems: three Garmin 8617 chart displays with AIS paired to Garmin radar sit alongside dedicated Caterpillar engine readouts, while Side Power bow thruster controls and a classic Ritchie compass provide confident course-keeping. Both RD30 and RD33 instrumentation are installed for comprehensive data, all brought together on an Octoplex monitor display that makes systems monitoring intuitive and immediate. Communication and safety are assured by twin Icom IC M604 VHF radios, and aft-into-night operation is enhanced by FLIR controls linked to FLIR night-vision capability for precision after dusk. The sportfisher's needs are served by US9 teaser reels and secure, lockable rod storage, and the helm is centered on a finely finished Release teak helm pod flanked by three ergonomically designed Release helm chairs. Creature comforts and entertainment are treated with equal care: a full Costa enclosure shelters the area, a Fusion stereo drives four JL Audio speakers, and conveniences such as a freezer box and fresh water washdown complete this refined, fully outfitted command deck.

Cockpit

Conceived to perform in tournament conditions while offering an indulgent

retreat, the cockpit features mezzanine seating kept cool by the "Cool Breeze" cockpit air conditioning and set atop a meticulously laid teak deck. A Garmin 8215 and a pair of JL Audio speakers deliver pinpoint navigation and rich audio, and a Release fighting chair with rocket launcher occupies the center position for serious angling. Functional systems are as refined as the finishes, with a transom live well with window, a tuna door with lift gate and an Eskimo dump into the mezzanine box, alongside abundant chilled storage that includes a refrigerated drink box, a refrigerated bait box and a cockpit freezer, all supported by a tackle center with four drawers. Routine handling is effortless thanks to engine room access, multiple cockpit outlets and dedicated fresh and saltwater outlets, a port deck full-length fish box and starboard deck hatch storage bins, while illumination and service convenience are provided by two underwater lights and an oil transfer quick disconnect.

Hull and deck

The hull, finished in Pamlico Blue with a contrasting black mask, presents a refined profile protected by bottom paint and framed by a secure bow rail. Whether underway or at anchor, the deck is fitted for both serious fishing and effortless cruising: Rupp outriggers with a center rigger are in place for optimal spread, a spotlight and two underwater lights improve nighttime visibility, and an oil-change system is plumbed to the cockpit for convenient service. Ground tackle is robust—a 32 kg plow anchor on fifty feet of 3/8 inch chain with approximately 300 ft of rode—managed by a Lewmar windlass and led through an anchor chute. Power handling is simplified with two Cable Masters, while safety is comprehensively addressed with a Lalizas life raft for six people (new August 2022), twelve Type 1 PFDs, a stocked first-aid kit and current flares. Recent upkeep includes new rudder bearings installed in 2025 and new carpet throughout.

Electronics and navigation

The helm is centered on a Garmin 8617 GPS that drives four Garmin screens, integrated with a Garmin GHP20 autopilot and a GMR 1206 x HD radar to ensure precise charting and extended situational awareness. Shipboard communications are handled by two Icom M 604 VHF units while AIS 600 integration provides enhanced traffic monitoring. Subsurface intelligence comes from a Garmin GSD 26 Sounder paired with the PM265LH for deep, high resolution returns, augmented by Furuno RD33 instrumentation and the formidable Furuno Omni 8 Sonar for thorough fish finding performance. Nighttime operations are supported by Flir thermal imaging, global connectivity is provided via a KVH Satellite Dome, helm control is simplified with two Garmin Remote boxes positioned port and starboard, and onboard entertainment is delivered through the Fusion Stereo MS-UD755.

Engine room

Impeccably arranged and specified to a high standard, the engine room is built around a Caterpillar C-32A producing 1,925 hp, with hotel power supplied by an Onan 21.5 kW generator and fresh water generated by a Sea Recovery water maker rated at 1,400 GPD, while an Eskimo ice chipper adds convenience for onboard entertaining. Maintenance and monitoring are simplified with three dedicated engine-room cameras, a Craftsman toolbox and a lube oil system, and redundancy is provided by dual power-steering pumps. Comfort systems are comprehensive: Dometic Cruise Air air conditioning with four compressors serves the salon, staterooms and heads, a central vacuum system maintains interior cleanliness, and a Raritan hot-water heater supports onboard amenities. Maneuvering and seakeeping are addressed with a Side-Power electric bow thruster and a Seakeeper 16 gyro stabilizer, and dock handling is made effortless by two Cable Masters. Electrical

distribution is carefully laid out, with 125/250V AC shore power feeding a port-side panel as you enter the salon and the Onan 21.5 kW generator supplying AC while underway; charging is handled by Chargemaster 60- and 100-amp chargers and eight batteries support both 24V and 12V systems that feed transformers located outboard of the mains, including a Charles IsoBoost transformer. Tankage is generous for extended cruising, with three fuel tanks totaling 1,640 gallons, a single 300-gallon fresh-water tank, and a 135-gallon waste-water capacity, while sanitation is provided by Dometic toilets.

CONTACTS

Shestakov Yacht Sales is a brokerage company specializing in the sale and service of yachts worldwide. The company offers services for buying and selling both new and used motor yachts, sailing vessels, and luxury superyachts. They also provide yacht registration, insurance, technical maintenance, crew selection, and charter organization services across the U.S., Canada, Latin America, the Caribbean, and the Bahamas.

The founder and lead broker of the company is Andrey Shestakov, a licensed and certified expert with extensive experience in marine engineering and shipbuilding.

The company has an extensive network of partnerships with major yacht manufacturers worldwide and provides services in multiple languages, including Russian, Ukrainian, Spanish, and English. The office is in Dania Beach, Florida, USA.

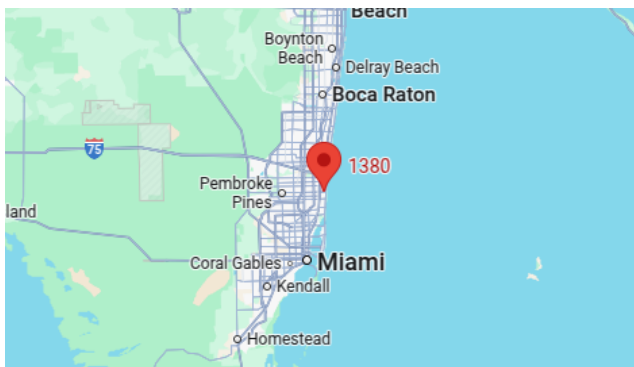
For more information and to view available yachts, you can visit the company's official website: <https://shestakovyachtsales.com>

Contact details

Phone: +1(954)274-4435

Email: andrey@shestakovyachtsales.com

Address



1380 Weeping Willow Way, Hollywood,
Florida 33019