



SHESTAKOV

Yacht Sales

## MARIAH JEAN - VIKING



**Builder:** [VIKING](#)

**Beam:** 18' 0" (5.54 m)

**Year Built:** 2004

**Max Draft:** 17' 6" (5.33 m)

**Model:** 61 CONVERTIBLE

**Cruising Speed:** 31 Knots (35.67 MPH)

**Price:** \$899,000 USD Subject to change.

[See full listing on our website](#)

**Location:** Golfito, Costa Rica

**LOA:** 61' 0" (18.59 m)

If you would like to buy a yacht **MARIAH JEAN - VIKING** or would like help answering any questions concerning purchasing, selling, or chartering a yacht, please call **+1(954)274-4435** or click here on <https://shestakovyachtsales.com>

# TABLE OF CONTENTS

**OVERVIEW ..... 3**

**SPECIFICATIONS ..... 4**

    Basic Information ..... 4

    Dimensions ..... 4

    Speed, Capacities and Weight ..... 4

    Accommodations ..... 4

    Hull and Deck Information ..... 5

    Engine Information ..... 5

**GALLERY ..... 6**

**DETAILED DESCRIPTION ..... 25**

**CONTACTS ..... 33**

## OVERVIEW

---

Step aboard the 2004 Viking 61 Convertible Mariah Jean, a flagship sportfishing yacht that marries Viking's celebrated performance with sophisticated onboard appointments. The main salon is finished in custom teak joinery and fitted with a Bose surround system, anchored by a sweeping U-shaped Ultra-Leather settee, while the galley is appointed with granite countertops, Sub-Zero cold storage and a full complement of appliances to accommodate every culinary need at sea. Overnight accommodations are exceptionally generous, featuring a full-beam owner's stateroom, a VIP crossover cabin and an additional guest berth, each benefiting from private ensuite baths and enhanced entertainment systems. The flybridge presents Bluewater helm chairs and a Palm Beach-style helm pod, complemented by Garmin and Furuno navigation and fishfinding electronics, and the cockpit is tournament-ready with a convertible Bluewater fighting chair, ample deep freezer capacity, a livewell and a dedicated rigging and tackle center. Below decks, propulsion and systems include twin 1500HP MTUs, dual Onan generators and a 1,600 GPD watermaker, providing the power and autonomy for extended cruising and serious sportfishing. Mariah Jean is offered turnkey and ready for immediate consideration—contact us to schedule a private inspection in Golfito, Costa Rica.

# SPECIFICATIONS

---

## Basic Information

---

**Model Year:**  
2004

**Country:**  
Costa Rica

**Year Built:**  
2004

## Dimensions

---

**LOA:**  
61' 0" (18.59 m)

**Max Draft:**  
17' 6" (5.33 m)

**Beam:**  
18' 0" (5.54 m)

## Speed, Capacities and Weight

---

**Cruise Speed:**  
31 Knots (35.67 MPH)

**Fuel Capacity:**  
2050 Gallons

**Water Capacity:**  
350 Gallons

## Accommodations

---

**Total Heads:**  
3

## Hull and Deck Information

---

**Hull Material:**

Fiberglass and Plastic Yachts

**Hull Designer:**

N/A

**Deck Material:**

Fiberglass

**Interior Designer:**

N/A

**Hull Configuration:**

N/A

## Engine Information

---

**Engines:**

2

**Engine Type:**

Inboard

**Manufacturer:**

MTU

**Fuel Type:**

Diesel

# GALLERY



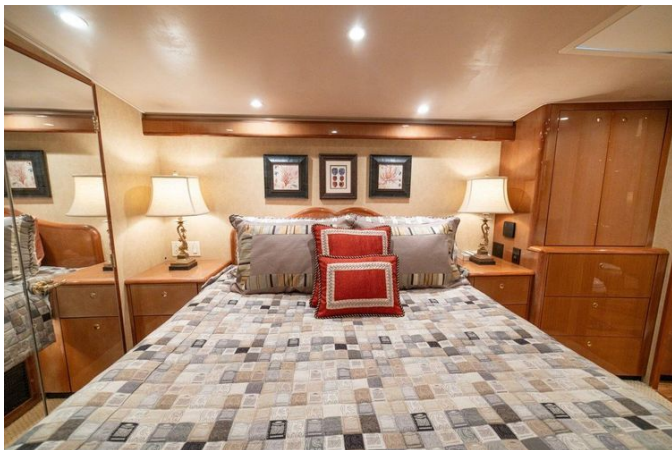


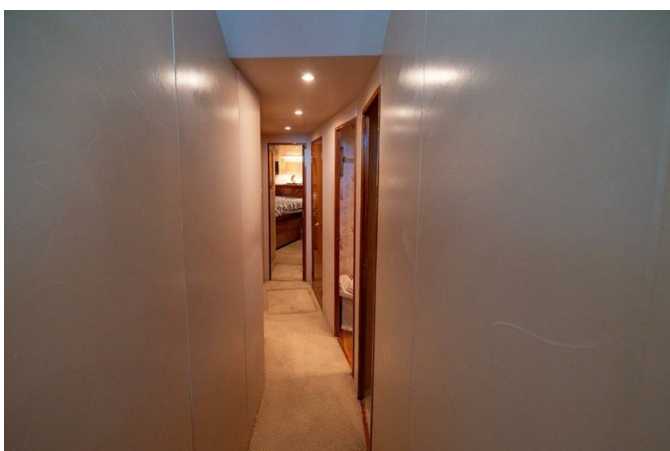




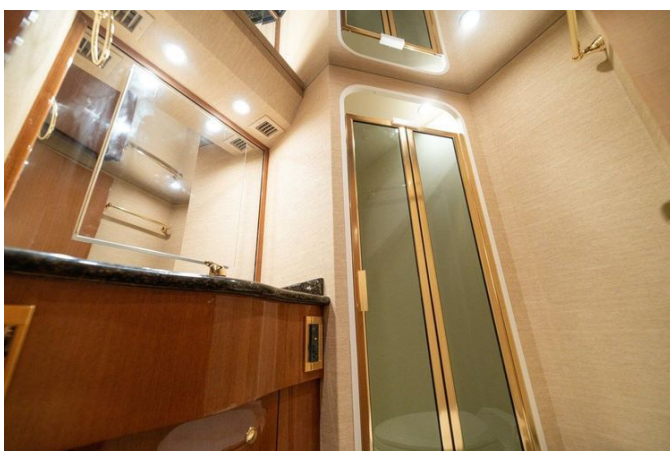
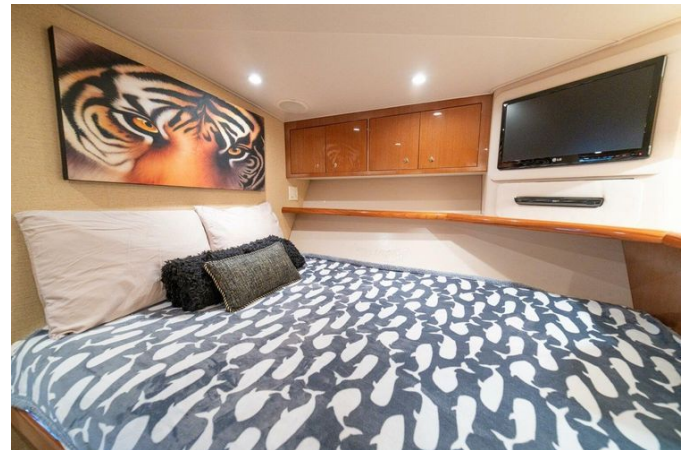


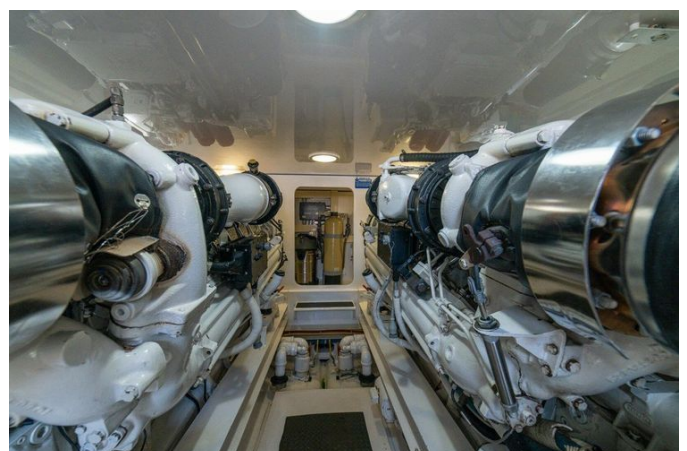


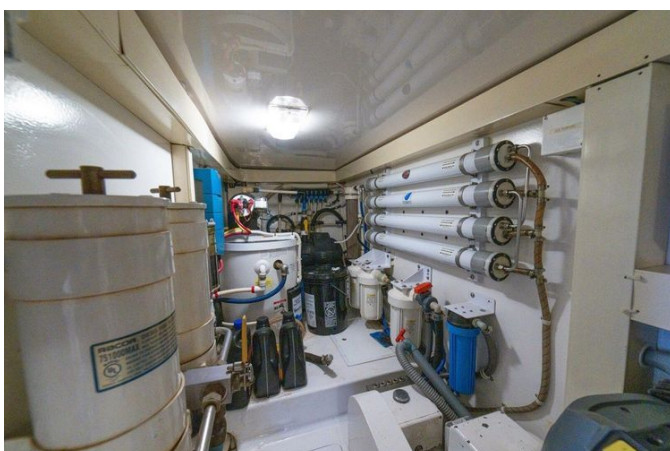


























---

# DETAILED DESCRIPTION

---

## Recent updates

---

A meticulous maintenance program has recently been completed, with new cutlass bearings fitted, a fresh application of bottom paint, a propeller anti-fouling treatment applied to the running gear, and new underwater lights installed to enhance both the vessel's efficiency and its visual presence beneath the waterline.

## Salon

---

The salon aboard the Viking 61 is a generously proportioned and thoughtfully appointed living area, anchored to port by a large U-shaped Ultra-Leather sofa with bespoke pleated backing and ample concealed storage below, complemented by a Bluewater teak hi/low table with extendable leaves. Concealed beneath the seating are purpose-built rod holders, and the space is dressed in upscale decorative fabrics, a custom carpet and an Amtico sole trimmed in teak, with custom teak valances featuring bullnose profiles and lambrequins, all softened by Hunter Douglas window treatments and recessed dimmable lighting to foster a refined, inviting atmosphere. Entering to starboard through the automatic salon door places you beside the ship's AC/DC distribution panel, and continuing forward reveals exquisite teak joinery that conceals the entertainment equipment and additional storage. Integrated within this joinery are the AC/DC ship's service panel, an air conditioning control panel, generator remote start/stop and an ICOM remote VHF microphone, providing seamless control of onboard systems. Entertainment is immersive and effortless, centered on an LG forty-two-inch LED TV, a Bose surround-sound system, a Pioneer DVD player and KVH HD7 satellite TV, while an ice maker supports gracious hospitality. Just forward of the joinery, a

dinette comfortably accommodates up to four guests, and directly opposite to port the yacht's galley completes a salon layout that artfully combines luxury, functionality and smooth circulation.

## Galley/dinette

---

Designed for those who prize both form and function, the traditional galley presents a superbly considered layout where culinary ambition meets yacht-grade efficiency. Granite countertops sweep across an island and the forward run, crowning a bank of six Sub Zero refrigerator/freezer drawers—four dedicated refrigeration drawers and two freezer units—while the food preparation zone and a Kenyon cooktop are neatly positioned along the forward counter amid abundant overhead and undercounter storage. Opposite the workspace, a teak dinette comfortably seats five, with additional stowage concealed beneath the bench, and an Amtico wood sole continues uninterrupted through the galley and dinette for a cohesive, refined finish. Appointments are comprehensive and well chosen: a Sharp convection/microwave oven, Kenmore ice-maker and trash compactor, sink disposal and a tasteful teak backsplash, alongside four generous slide out drawers in the brow. Systems are equally accessible, with the ship's AC/DC sub panel featuring a watermaker remote start/stop and a dedicated remote water maker start/stop panel, while recessed dimmable lighting—including integrated headliner fixtures—courtesy lighting, plentiful 110V outlets and an air conditioning thermostat provide precise comfort and illumination throughout.

## Starboard guest stateroom

---

Down the starboard companionway, the guest stateroom presents a sophisticated L-shaped layout of upper and lower single berths, providing

restful overnight accommodations above a soft carpeted sole. Storage is thoughtfully arranged with a cedar-lined hanging closet and four teak joinery drawers, while recessed dimmable lighting and discreet recessed speakers tied into the salon entertainment system create an intimate, refined atmosphere. Practical comforts include individual air-conditioning control, a dedicated stereo volume control and a 110V outlet, and guests enjoy the convenience of direct access to the guest/day head from within the stateroom.

## Companionway

---

A broad, carpeted companionway gracefully connects all staterooms and guest accommodations and leads forward to a dedicated laundry area equipped with Whirlpool stackable washer and dryer units for effortless onboard living. Practical storage is integrated throughout, with generous underfoot compartments situated just before the entrance to the forward VIP and a central vacuum system discreetly hidden beneath the last stair tread to keep housekeeping unobtrusive. Additional dry stowage is concealed behind the LED TV and is easily accessed as you enter the companionway from the salon. Serviceability remains seamless thanks to bilge access provided for the big pumps and the head pumps, preserving both functionality and the elegant flow of the passage.

## Master stateroom

---

Descending the port-side companionway reveals the owner's suite, an elegant sanctuary centered on a queen-size walkaround berth set athwartship and fitted with the upgraded Mattress System No. 1. The berth is flanked by twin nightstands and accented by a bespoke teak headboard, while two mirrored, cedar-lined hanging closets run across the aft bulkhead to accommodate an extensive wardrobe. Forward lies an ensuite head with a separate shower,

complemented by a teak-joinery four-drawer credenza finished with a high-gloss teak top and an additional hanging locker for effortless organization. Underfoot, a carpeted sole cushions each step and a secure safe plus generous storage are discreetly located beneath the master berth. An overhead deck hatch with integrated privacy shade and insect screen brings daylight and ventilation when desired, and bedside reading lamps along with recessed overhead lighting on dimmers let you tailor the atmosphere. Climate is controlled independently with dedicated air conditioning, power needs are met with 110V outlets and GFI protection, and entertainment is refined with a Samsung 26-inch LED TV paired with a Sony Blu-ray DVD player.

## Master head

---

The master head marries sophisticated finishes with practical design, centered on a mirrored vanity topped by a picture-framed mirror in high-gloss teak that sits above a freshwater hot and cold sink recessed into a granite countertop. Underfoot, durable Amtico flooring lends both resilience and refined style, while an upgraded VacuFlush porcelain head delivers quiet, dependable sanitation. A linen closet with a full-length mirror expands storage and brightens the space, and the stall-style shower—appointed with a glass entry door—presents a clean, contemporary silhouette. Comfort and ambiance are ensured by an exhaust fan and recessed lighting overhead, and everyday convenience is provided by 110-volt outlets with GFI protection.

## VIP stateroom

---

Positioned fully forward in the bow, the VIP stateroom adopts the favored crossover layout with a single berth to starboard and a double berth to port, enhanced by an upgraded mattress system for superior sleeping comfort. Ample storage is provided beneath the single berth, while a cedar-lined

hanging closet and a teak hanging locker with cedar-lined drawers offer carefully appointed space for clothing and personal items. Adjacent on the starboard side, the ensuite head and shower showcase granite countertops and durable Amtico flooring, delivering a refined, low-maintenance finish. An Ocean Air overhead deck hatch, complete with a privacy shade and insect screen, brings natural light and fresh sea air into the suite, while teak valances and a carpeted sole contribute to a warm, bespoke atmosphere. Climate and lighting are tailored to personal preference via individual air-conditioning controls, recessed overhead lights on dimmers, and dedicated reading lamps, with sound supplied through recessed stereo speakers with independent volume control. Entertainment and convenience are addressed with an LG 22-inch LED TV and Blu-ray DVD player, alongside a 110-volt outlet, and practical design is maintained through discreet access to the bilge and bow thruster area, marrying luxury with functional ease.

## VIP head

---

The VIP head is appointed with gleaming granite countertops and a mirrored vanity set within a high-gloss picture-frame teak surround, all resting on richly grained Amtico flooring. An upgraded Vacuflush porcelain head provides quiet, reliable operation, while a freshwater hot-and-cold stall-style shower delivers spa-like comfort and convenience, complemented by an efficient exhaust fan to ensure excellent ventilation. Recessed lighting in the ceiling together with a mirrored ceiling amplify the sense of space and refinement, and a GFCI-protected 110V outlet adds practical, safety-conscious utility.

## Guest / day head

---

Accessible from the companionway or through the starboard guest quarters, the guest/day head is appointed with premium materials and refined touches.

A granite countertop crowns the mirrored vanity, which is accented by teak picture-frame trim, while an upgraded Vacuflush porcelain head and an exhaust fan deliver reliable comfort. Recessed overhead lighting and an Ocean Air deck hatch—equipped with a privacy shade and screen—provide adjustable natural light and ventilation. A practical stall-style shower pairs with Amtico flooring and custom wallpaper to elevate the environment, and a GFCI-protected 110V outlet adds everyday functionality.

## Flybridge

---

A short ascent brings you to the flybridge of Tori's Seacret, conceived as both an efficient command station and an elegant social retreat. Two Blue Water helm chairs to port face a Palm Beach helm pod whose shift levers incorporate integrated bow thruster controls, while all of the ship's electronics, engine controls, and engine displays are positioned just forward for clear sightlines and effortless operation. Stretching nearly the full beam ahead of the helm, a deep chest freezer and dedicated drink box preserve provisions and chilled refreshments, and forward of this refrigeration a welcoming L-shaped seating area with under-seat storage invites relaxed conversation. To starboard a generously sized bench provides additional storage below, maximizing stowage throughout the space. The flybridge is enclosed on three sides with EZ2CY panels to shelter occupants from wind and rain, and smart brow storage makes use of every available inch aboard this Viking 61. Rupp outriggers, HD Miya EPOCH electric teaser reels, navigation lights and convenient access to the hardtop complete a flybridge configured for serious sportfishing and refined cruising comfort.

## Engine room and mechanical space

---

At the core of the yacht sit twin MTU M91 series engines, each rated at 1,500

HP and maintained with current services, reflecting 2,200 hours since major overhaul (SMOH) and 5,365 original hours. Electrical generation comes from dual Onan 21 kW generators, the port unit showing 4,139 hours and the starboard 4,180 hours (08/2025). Long-range autonomy is supported by a 1,600 GPD Village Marine water maker with remote start/stop, while engine reliability is reinforced by two AC raw water pumps—one held as a dedicated spare—and a pair of 24V fuel transfer pumps. Routine upkeep and reliable startups are made easier by an integrated oil change system and fuel priming pumps, and incoming voltage is steadied by two ISO Boost transformers. Fuel capacity is enhanced by an additional tank for a total of three tanks holding 2,050 gallons combined. The machinery space is equipped with fans and blowers, bilge pumps and crash valves, and protected by a fixed fire suppression system; crew comfort is addressed with a hot water heater and a Headhunter freshwater pump, with all heads upgraded to Headhunter units. Steering redundancy is provided by dual steering pumps, and emergency start/stop switches offer added operational control.

## Cockpit

---

Entering the Viking 61, you discover an expansive teak decked cockpit designed for leisurely days at anchor as well as high performance tournament fishing. Set into the sole are a livewell, an insulated fish box and a dedicated insulated locker for an Eskimo ice machine, while a large transom tuna door with a lift gate makes every landing and retrieval effortless. A centerline Bluewater dinette converts quickly into a Bluewater fighting chair mounted on an offset stanchion, with the chair included in the sale. Along the aft bulkhead a deep freezer is positioned to port, an electric barbecue occupies the center with tackle drawers beneath, and the engine room entrance sits to starboard of the grill; additional tackle storage and a refrigerated drink box are conveniently located to starboard as you step into the salon. Coaming boards

frame the work area, and the cockpit is fitted with abundant tackle drawers, a Cablemaster, freshwater washdown and inlet, a cable/telephone hookup and 12/24V electric reel outlets, with straightforward access to both the flybridge and the bow. The gunwales carry four rod holders to keep your spread orderly, underwater and deck lighting extend your day into night, JL Audio cockpit speakers provide the soundtrack, and both a cockpit insulated box and a separate insulated drink box are on hand to keep provisions chilled.

## Electronics

---

Designed to instill confidence at sea, the helm is outfitted with a refined navigation ensemble centered on multiple Garmin GPSMAP chart displays—models 7215, 8610, 8612 and 8616—delivering exceptionally clear charts, an intuitive user experience and layered redundancy for every course. Vital performance and environmental readouts are handled with accuracy by the Furuno RD33 while a Moritz monitoring system keeps constant surveillance over the vessel's systems. Onboard ambiance and entertainment are provided by a premium Fusion MS IP7000 stereo, and dependable voice communication is ensured through two Icom IC M604 VHF units. Nighttime visibility is enhanced by a high intensity ACR Spotlight, precise automatic steering is entrusted to the Simrad AP 28 autopilot, and dedicated anglers will appreciate the Miya Epoch Command X15 equipped to support deep drop fishing operations.

# CONTACTS

---

Shestakov Yacht Sales is a brokerage company specializing in the sale and service of yachts worldwide. The company offers services for buying and selling both new and used motor yachts, sailing vessels, and luxury superyachts. They also provide yacht registration, insurance, technical maintenance, crew selection, and charter organization services across the U.S., Canada, Latin America, the Caribbean, and the Bahamas.

The founder and lead broker of the company is Andrey Shestakov, a licensed and certified expert with extensive experience in marine engineering and shipbuilding.

The company has an extensive network of partnerships with major yacht manufacturers worldwide and provides services in multiple languages, including Russian, Ukrainian, Spanish, and English. The office is in Dania Beach, Florida, USA.

For more information and to view available yachts, you can visit the company's official website: <https://shestakovyachtsales.com>

## Contact details

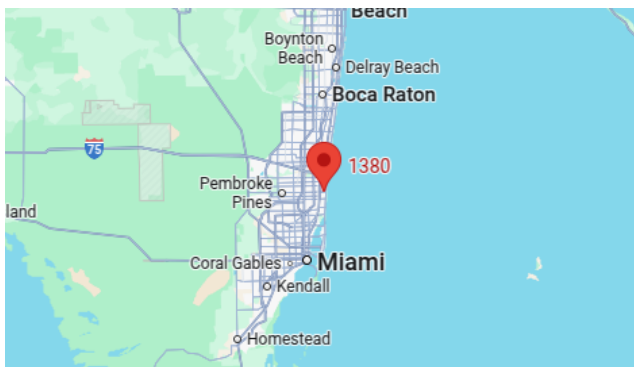
---

**Phone:** +1(954)274-4435

**Email:** [andrey@shestakovyachtsales.com](mailto:andrey@shestakovyachtsales.com)

## Address

---



1380 Weeping Willow Way, Hollywood,  
Florida 33019