



SHESTAKOV

Yacht Sales

HONEY GIRL - VIKING



Builder: [VIKING](#)

Beam: 18' 0" (5.54 m)

Year Built: 2005

Model: 61 CONVERTIBLE

Price: \$1,375,000 USD Subject to change.

[See full listing on our website](#)

Location: Potrero, Costa Rica

LOA: 61' 0" (18.59 m)

If you would like to buy a yacht **HONEY GIRL - VIKING** or would like help answering any questions concerning purchasing, selling, or chartering a yacht, please call **+1(954)274-4435** or click here on <https://shestakovyachtsales.com>

TABLE OF CONTENTS

OVERVIEW	3
SPECIFICATIONS	4
Basic Information	4
Dimensions	4
Speed, Capacities and Weight	4
Accommodations	4
Hull and Deck Information	5
Engine Information	5
GALLERY	6
DETAILED DESCRIPTION	24
CONTACTS	32

OVERVIEW

The 2005 61' Viking Convertible Flybridge "Honey Girl" represents an exceptional opportunity to own a thoughtfully updated and meticulously maintained convertible sportfisher from a marque renowned for performance and bluewater capability. Purpose-built for serious offshore gamefishing yet appointed with refined comfort throughout, she has benefited from continual investment and the steady oversight of a full-time captain and crew, ensuring systems and finishes remain in turnkey condition.

Recent enhancements include a tastefully reimagined interior, the addition of a Seakeeper SK16 gyro stabilizer, a Furuno CSH8L Omni Sonar and a comprehensive Simrad electronics package featuring five multifunction displays. Her custom Midnight Blue Awlgrip finish gives her a commanding presence, while substantial mechanical improvements—most notably twin Northern Lights generators and a comprehensive in-frame by Valley Detroit Power Systems—deliver proven reliability and long-term value. Combining the hallmark Viking ride and speed with these extensive upgrades, "Honey Girl" is equally well-suited to tournament competition, extended bluewater cruising, or private luxury motor yacht use. The seller is open to a distinctive half-share ownership arrangement. Located in Marina Flamingo, Costa Rica.

SPECIFICATIONS

Basic Information

Model Year:
2005

Country:
Costa Rica

Year Built:
2005

Dimensions

LOA:
61' 0" (18.59 m)

Beam:
18' 0" (5.54 m)

Speed, Capacities and Weight

Water Capacity:
310 Gallons

Fuel Capacity:
1850 Gallons

Accommodations

Total Heads:
3

Hull and Deck Information

Hull Material:

Fiberglass and Plastic Yachts

Hull Designer:

N/A

Deck Material:

Fiberglass

Interior Designer:

N/A

Hull Configuration:

N/A

Engine Information

Engines:

2

Engine Type:

Inboard

Manufacturer:

MTU

Fuel Type:

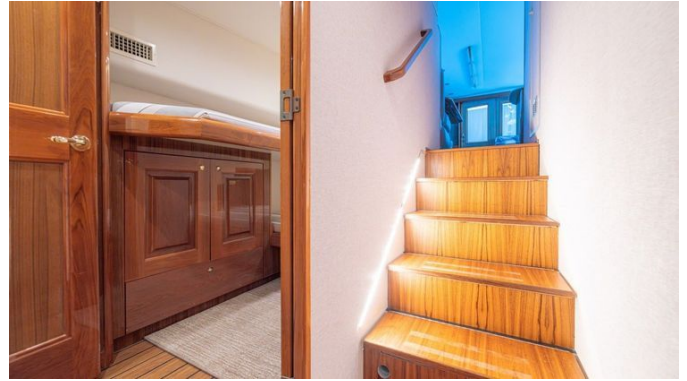
Diesel

GALLERY



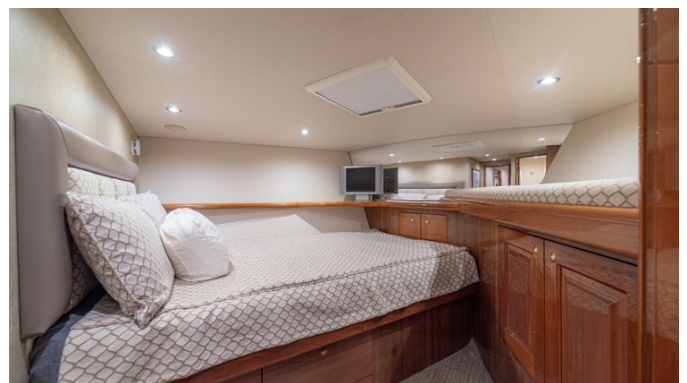


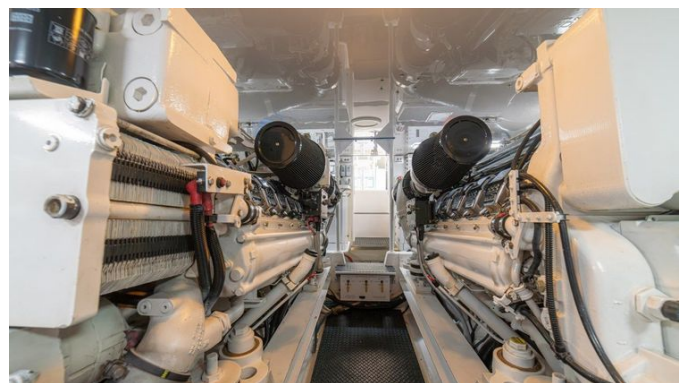
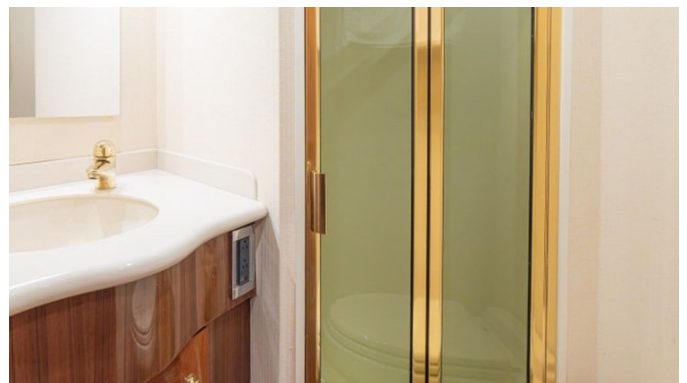


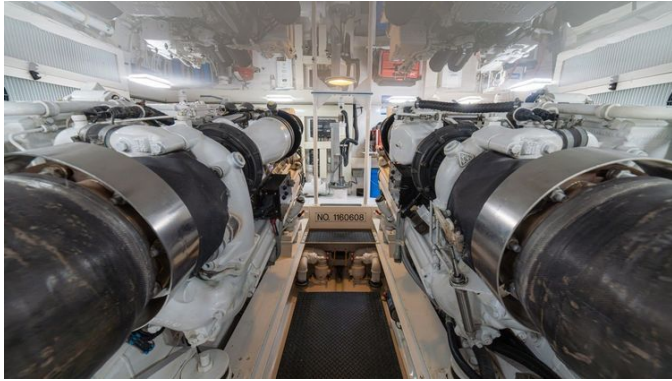


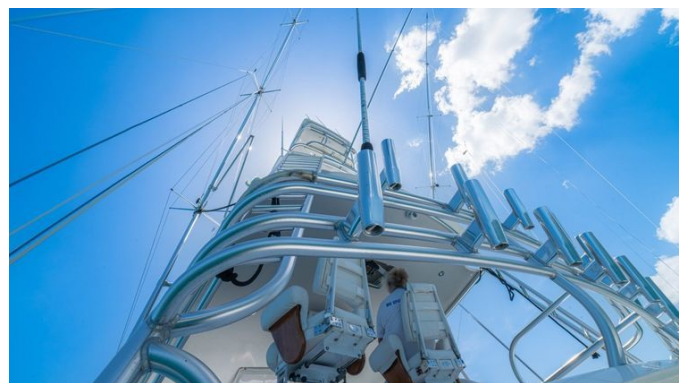
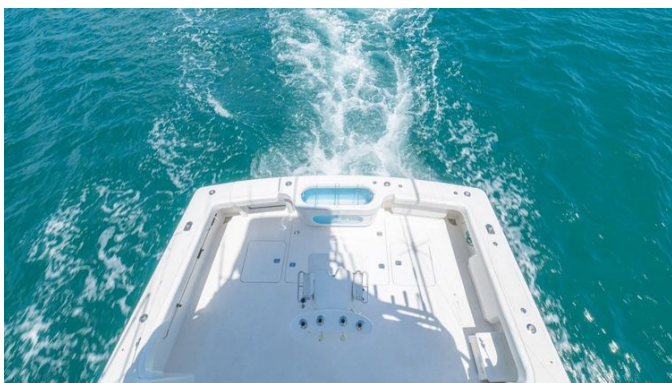
















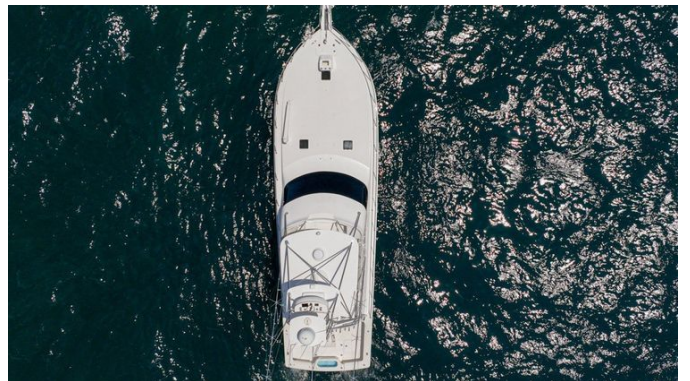












DETAILED DESCRIPTION

Recent upgrades and services (2025–2026)

The vessel now operates under a formal safety management system and a planned maintenance program overseen by a full time crew, with comprehensive service and log records available on request. During a haul out in February 2026 the hull received fresh bottom paint and a new Prop Speed application, all thru-hulls were serviced, the trim tabs were attended to, the propellers were precision tuned and an additional set was refurbished, an MTU certified mechanic replaced every injector on both port and starboard engines and performed a valve adjustment in 2026, and the cooling systems for both engines were flushed and serviced. Equally meticulous work undertaken in San Diego in 2025 included SeaKeeper service in December 2025, an upgraded A/C saltwater cooling system, full servicing of all air conditioning, refrigerator and freezer systems, installation of new cutlass bearings, Omni sonar maintenance, and re certification of all safety gear—both fixed and portable—including fire fighting equipment, EPIRB and life raft in 2025.

Upgrades and services (2023–2024)

A comprehensive schedule of upgrades and routine maintenance has significantly enhanced the yacht's operational reliability and onboard comfort. In the engine room, fan switch assemblies were replaced and four new engine room fans fitted, while the steering system underwent a full service with all worn components renewed. The watermaker's high pressure pump received professional servicing, both gensets were attended to according to their service intervals, and a 1,000 hour service on the Seakeeper included replacement of all bushings. AGM batteries were installed to improve electrical

resilience, Isinglass enclosures were added around the bridge, and the refrigeration pump was serviced to ensure optimal cold storage performance. The bait pump was overhauled with new seals and bearings, navigation lighting was refreshed, and the crew quarters air conditioning compressor was replaced. Electronics were upgraded with the addition of an NSS EVO 3 processor to the Simrad suite, completing a thorough enhancement of the vessel's systems.

During 2022–2023 at Shelter Island Boatyard in San Diego, a Valley Detroit Power System rebuild rejuvenated both the port and starboard engines in 2023. Both shafts were removed, serviced and reinstalled, with replacement of port and starboard shaft bearings and service to both propellers. The hull bottom received fresh antifouling paint with PropSpeed applied, older ball valves were replaced, and both rudders were pulled to fit new shaft seals and rudder bearings. The Omni sonar was serviced, all trim tab safety wires were renewed, all trim tab hydraulic rams were replaced and the fiberglass trim tab cowlings were refurbished. A new swim step was fitted and minor paint imperfections on the hull were corrected. The fire suppression system and all extinguishers were serviced and smoke alarms and detectors installed throughout every stateroom. Both hydraulic steering coolers were replaced and a new bilge pump with an emergency float switch was installed adjacent to the Seakeeper. Additional work included repair of the engine room camera system, service to the salon ice maker, repair of the Insta Hot water system, servicing of the fuel transfer system, and installation of Starlink to enhance onboard communications.

Salon

The salon is a refined gathering space centered on a 50-inch Samsung flatscreen paired with a Bose entertainment system, while a U-shaped leather sofa creates an inviting area for conversation beneath Hunter silhouette

blinds; LED salon lighting discreetly integrated into the headliner casts a sophisticated glow over Amtico teak flooring that extends throughout the interior. Release Marine barstools line the counter, and a high-gloss teak table with a hi-lo mechanism transitions effortlessly from casual lounging to formal dining. Entertaining is made simple with a Scotsman ice maker and dedicated bottle storage, and the yacht's operational reliability is reinforced by main electrical panels equipped with new 100-amp generator breakers.

Galley

Crafted to inspire gourmet creativity and effortless entertaining, the galley is appointed with expansive Corian countertops that deliver generous workspace and Sub Zero refrigeration offering four refrigerator drawers and two freezer drawers for precise temperature control and abundant chilled storage. A Kenyon four-burner stove top works in concert with a Sharp Convection microwave to manage everything from quick reheats to full-scale meal preparation, while a stainless sink with food disposal makes cleanup simple and efficient. Large pull-out drawer storage keeps cookware and provisions neatly stowed and easily accessible, new Amtico Teak flooring underfoot adds warmth and durability, and LED lighting together with the headliner throughout ensure the space remains bright and inviting.

Master stateroom

The tranquil master stateroom is anchored by an upgraded memory-foam mattress dressed in new bedding and positioned in a walk-around berth with integrated storage, all elegantly framed by a newly installed headboard and fresh wallpaper. Soft, warm LED lighting highlights the headliner while upgraded carpeting ensures a sumptuous feel underfoot. Storage has been carefully considered with large his-and-hers cedar-lined closets, an additional

sizeable closet with mirrored doors, sixteen cabinet drawers and a four-drawer vanity for personal items. A Samsung 40-inch flat-screen TV provides onboard entertainment, and natural light plus ventilation enter through a Bomar hatch window fitted with a shade and screen. This private sanctuary is completed by an ensuite head.

Master head

The master head is laid with Amtico teak flooring beneath a Corian vanity top and enhanced by upgraded medicine and sink cabinets that marry elegant storage with meticulous detailing. A generous stall shower, enclosed by a one-piece glass shower door, fills the room with light to create a serene, spa-like atmosphere, while the Dometic Masterflush sanitation system provides dependable, contemporary convenience. LED lighting recessed into the headliner offers refined illumination, and a dedicated linen closet completes this impeccably finished retreat.

Forward VIP stateroom

Located in the bow, the Forward VIP stateroom boasts a spacious crossover berth dressed with a new memory-foam mattress and fresh bedding to ensure restorative nights aboard. A flat-screen TV provides effortless entertainment, while ample storage—five storage drawers and a full hanging locker—keeps personal effects organized. An en-suite head affords privacy and convenience, and the atmosphere is refined by upgraded carpet and warm LED lighting recessed into an elegant headliner, all softened by natural light from a Bomar hatch window with shade for adjustable illumination. For added peace of mind, a forward RULE bilge pump is discreetly integrated to enhance onboard safety.

Guest stateroom

Configured for both adaptability and refinement, the guest stateroom presents crossover berths positioned opposite a sleek flatscreen TV to encourage relaxed viewing. Thoughtfully designed storage includes five drawers and a dedicated hanging locker to keep clothing and personal items neatly stowed. The ensuite, which also functions as a day head, has been refreshed with new flooring, while upgraded carpeting throughout the cabin provides a cohesive, luxurious underfoot feel. Bedding is supplied for the crew bunks, and natural light arrives through a Bomar hatch equipped with a shade for privacy as needed. A crisp headliner, efficient LED lighting, and tasteful wallpaper complete the serene, elegant ambiance.

Deck & cockpit

A hybrid mezzanine, completed in 2018, anchors the aft deck and has been meticulously outfitted with a freezer, a refrigerator and a 50-gallon bait tank accompanied by additional storage, creating an efficient hub for serious fishing. The cockpit is engineered for performance with separate fresh- and salt-water washdown systems, a pair of recessed in-deck fish boxes, a Bluewater 170-gallon split live well and a custom 120-gallon transom live well featuring a viewing window. Live-bait capability is further amplified by eight tuna tubes seamlessly integrated into the gunwale and plumbed through a dedicated manifold, while a bladder tank quick-connect provides extended range and operational flexibility. Anglers will value two Hubbell receptacles for electric reels and an Eskimo ice chipper capable of producing 600 pounds of ice per day. Thoughtful, practical luxuries include overhead LED cockpit lighting, a transom door for effortless fish handling and premium cockpit speakers, and a Simrad NSS12 evo3S multifunction display mounted in the cockpit keeps vital information readily visible. In 2018 the deck received new

nonskid and the hull and house were refreshed with new paint highlighted by a dramatic black mask, completing the refined, purpose-built exterior.

Flybridge

The flybridge serves as a refined command center, anchored by a pair of Pompanette International helm chairs that were rebuilt and reupholstered in 2021, bookended by a forward L-shaped bridge settee offering abundant storage and a starboard lounge with a rear-facing seat and additional stowage. Dedicated anglers will value the fishing package, which includes two Myia Epoch Electric teaser reels and fourteen rod rocket launchers mounted over a sophisticated North River Tatami deck. The hardtop's underside is finished in flat silver to minimize glare, while LED overhead lighting provides precise illumination from early-morning departures to late returns. Provisioning and bait handling are simplified by a large bulkhead freezer and a bulkhead refrigerator, both systems having been recently recharged and enhanced with a new control module. Crowning the arrangement is a complete Pipewelders Marine Tuna Tower equipped with controls, seating and electronics, complemented by Rupp Tournament triple-spreader 36' outriggers with a center rigger for exceptional spread presentation.

Electronics - 2021

The vessel's navigation suite is centred on two Simrad NSO 24-inch multifunction displays and a Simrad NSO 19-inch MFD, complemented by a Furuno CSH8L Omni sonar whose control head is routed into a 24-inch Simrad MFD and a Simrad S5100 sounder module, while additional helm stations are provided by a Simrad NSS 12 Evo3s at the aft mezzanine and a Simrad NSS 9 Evo 2 in the tower. Situational awareness is further enhanced by a Simrad 6 kW, 72 m, 6-foot Halo open-array radar working in tandem with a Simrad Halo

24 closed-array radar, all integrated with an Airmar B275LHW transducer and a Navionics West Coast chip for precise, reliable charting. Communications are comprehensive and redundantly configured, with two ICOM 504 VHF sets on the bridge, one Icom 424G VHF in the tower and an Icom IC-2300H two-meter radio, supported by two 16-foot Comrod 9 dB high-performance VHF antennas, a Digital eight-foot two-meter antenna and two Shakespeare four-foot VHF/AM/FM antennas. Control and safety systems include a Simrad AP44 autopilot, FLIR M232 thermal imaging with joystick control, three dedicated engine-room and cockpit cameras, an ACR spotlight with its own control head, and fully outfitted trim tab pumps, switches and gauges. Onboard entertainment and connectivity are equally refined, featuring a KVH TracVision TV6 HD satellite TV antenna, a FUSION BB300 stereo driving eight new JL Audio speakers, and Starlink to deliver robust broadband while at sea.

Bow

Forward, a custom 25-gallon tank incorporates flush-mount rod holders, blending practical use with clean, uncluttered lines. A stainless West Coat bow rail, fitted in 2018, adds both security and a refined touch. Ground tackle is managed by a Lofrans Project 1500 low profile windlass paired with an anchor, while a Steelhead 1000lb davit takes care of lifting duties. The deck's finish was refreshed with nonskid in 2018, enhancing safety and presentation.

Engine room

Designed to deliver both uncompromising power and long-term reliability, the machinery space centers on twin MTU 12V2000 M91 engines producing 1520 HP apiece, supported by a recent comprehensive cooling system service and replacement to ensure dependable operation. Electrical independence is provided by a pair of 21.5KW Northern Lights generators fitted in 2020, with

the port unit recording 1605 hours and the starboard 1610 hours, while a full engine gauge suite and convenient start/stop controls present critical information and command at the helm. Extended passages are accommodated by an Aquamiser water maker rated at 1500 gpd and an Eskimo 540 ice chipper, and fuel quality and delivery are protected by a dual Racor filtration arrangement with Reverso priming pumps, dedicated fuel shutoff valves and an onboard fuel transfer pump. Routine servicing is simplified by an integrated oil change system, and vessel safety is reinforced by a Fireboy fire extinguishing system certified through December 2025. Handling and drivetrain integrity benefit from a power steering pump, VEEM Predator props tuned in 2026, and recently serviced PSS shaft seals and cutlass bearings (2025) along with robust rudder seals and bearings. Electrical reserve is supplied by eight Lifeline Series 31 batteries, DRSA LED lighting illuminates the space, and a saltwater washdown pump adds practical convenience. Comfort underway and at anchor is elevated by a SeaKeeper SK16 gyro stabilizer installed in 2020, delivering a refined and composed ride.

Exclusions

For the avoidance of doubt, the owner's personal fishing tackle, all related equipment and any private personal belongings are retained by the owner and are expressly excluded from the sale.

CONTACTS

Shestakov Yacht Sales is a brokerage company specializing in the sale and service of yachts worldwide. The company offers services for buying and selling both new and used motor yachts, sailing vessels, and luxury superyachts. They also provide yacht registration, insurance, technical maintenance, crew selection, and charter organization services across the U.S., Canada, Latin America, the Caribbean, and the Bahamas.

The founder and lead broker of the company is Andrey Shestakov, a licensed and certified expert with extensive experience in marine engineering and shipbuilding.

The company has an extensive network of partnerships with major yacht manufacturers worldwide and provides services in multiple languages, including Russian, Ukrainian, Spanish, and English. The office is in Dania Beach, Florida, USA.

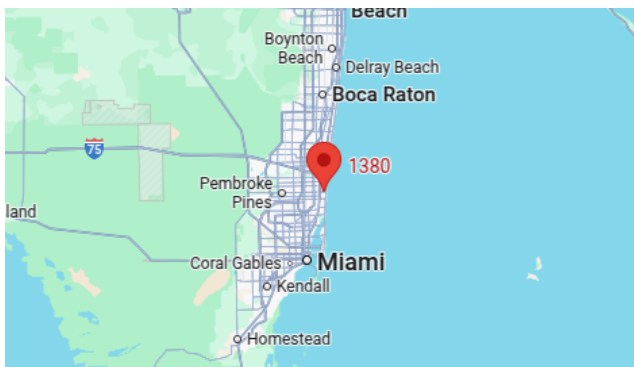
For more information and to view available yachts, you can visit the company's official website: <https://shestakovyachtsales.com>

Contact details

Phone: +1(954)274-4435

Email: andrey@shestakovyachtsales.com

Address



1380 Weeping Willow Way, Hollywood,
Florida 33019