

DEAL MAKER - BERTRAM YACHT



Builder: [Bertram Yacht](#)

LOA: 61' 0" (18.62 m)

Year Built: 2012

Beam: 17' 0" (5.18 m)

Model: 60 Custom Sportfish

Max Draft: 15' 0" (4.58 m)

Price: \$2,650,000 USD Subject to change.

Cruising Speed: 40 Knots (46.03 MPH)

[See full listing on our website](#)

Location: Hilton Head, United States

Max Speed: 36 Knots (41.43 MPH)

TABLE OF CONTENTS

OVERVIEW	3
SPECIFICATIONS	4
Basic Information	4
Dimensions	4
Speed, Capacities and Weight	4
Accommodations	5
Hull and Deck Information	5
Engine Information	5
GALLERY	6
DETAILED DESCRIPTION	9
CONTACTS	15

OVERVIEW

2012 Bertram 60 "Deal Maker"

Meet Deal Maker, a bespoke 60-foot Bertram that marries relentless sportfishing prowess with the comforts of a luxury motor yacht. Propelled by twin CAT C-32 diesels rated at 1850 HP, she rockets to 40 knots and settles into an effortless 36-knot cruise, placing you on the bite with authority. A sweeping 17' beam delivers unwavering offshore stability, while 1,822 gallons of fuel grant expansive bluewater range. Redundant, dual Northern Lights 20 kW generators provide reliable electrical support, and a shallow 4'7" draft—achieved with custom prop pockets—lets this convertible sportfish work nearer shores without compromising performance.

The interior is refined and purposeful: the galley, positioned forward to port, pairs blue marble countertops with warm cherry cabinetry and top-tier appliances including a KitchenAid 4-burner cooktop, an Emerson microwave, and twin Sub-Zero 700BR drawer refrigerators. Electric blinds offer instant privacy. The salon invites relaxation with an Avanti wine cooler, an L-settee with abundant storage, a Hi Lo table, and a Samsung flatscreen. Above, the open flybridge balances comfort and command with full heat and AC, molded seating, and generous stowage. A tournament-ready cockpit completes the package, featuring an Eskimo ice maker producing 850 lbs/day, a transom livewell, and a Kenyon electric grill. A true bluewater battlewagon, Deal Maker is the consummate convertible sportfisher — swift, capable, and impeccably appointed.

SPECIFICATIONS

Basic Information

Category:
Motor yachts

Year Built:
2012

Sub category:
Sport Fisherman

Country:
United States

Model Year:
2012

Dimensions

LOA:
61' 0" (18.62 m)

Max Draft:
15' 0" (4.58 m)

Beam:
17' 0" (5.18 m)

Speed, Capacities and Weight

Cruise Speed:
40 Knots (46.03 MPH)

Water Capacity:
250 Gallons

Max Speed:
36 Knots (41.43 MPH)

Fuel Capacity:
1822 Gallons

Accommodations

Total Heads:

3

Hull and Deck Information

Hull Material:

Fiberglass and Plastic Yachts

Hull Designer:

Bertram

Deck Material:

Fiberglass

Interior Designer:

Bertram

Hull Configuration:

N/A

Engine Information

Engines:

2

Engine Type:

Inboard

Manufacturer:

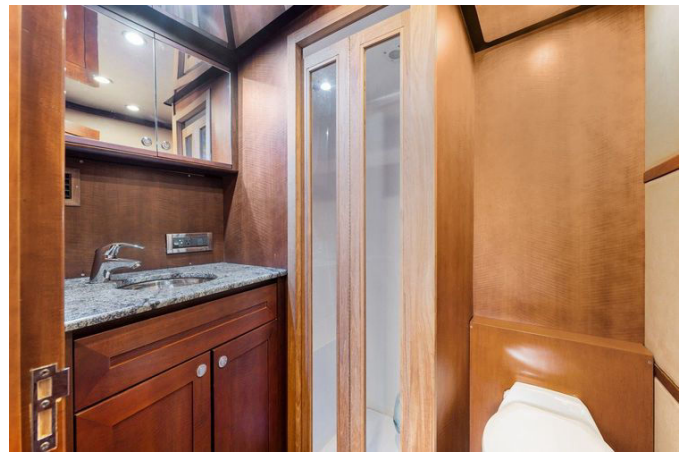
Caterpillar

Fuel Type:

Diesel

GALLERY







DETAILED DESCRIPTION

Hull

Beneath the waterline, five blade nickel aluminum bronze propellers deliver refined thrust and quiet efficiency, fed cleanly by Sendure scoop strainers on the intakes for unwavering reliability. Dual cylinder trim tabs carve attitude with precision, while a robust transom door stands ready for effortless boarding and big game action.

Decks & superstructure

A deep V form with thoughtfully modified prop pockets and keel delivers a poised, sea kindly ride, all executed in molded fiberglass composite with a luminous white gelcoat finish. Fixed side windows and an aft bulkhead window bathe the interior in light, while engine room vents discreetly integrated into the aft pilasters keep machinery breathing freely. Safe movement is assured by welded anodized aluminum bow rails and matching grab rails along the superstructure, and a cabin trunk hatch opens directly into the VIP stateroom. Fueling is practical and balanced with two diesel fuel fill plates to port and two to starboard. Offshore pedigree shows in Pipewelders triple spreader hydraulic outriggers with bridge release, partnered by a molded bow anchor pulpit in composite with a stainless steel roller and a Lewmar vertical windlass with capstan and wildcat, commanded via two foot switches. Mooring hardware is robust and purposeful, with port and starboard bow cleats without chocks and two spring cleats per side, while water fill and waste pump out are neatly handled at the dedicated deck plate.

Bridge deck

An open flybridge crowns the yacht with a molded composite structure that integrates a clean helm console and generous seating. Molded seats with plush cushions conceal ample storage, and full enclosure curtains on all sides, in EZ2CY type clarity, transform the space into a protected command center. Pedestal mounted helm and companion chairs with cushions and footrests support effortless passages, under a welded anodized aluminum half tower with molded canopy. Navigation lights sit to port and starboard in the forward corners of the molded hardtop, while a dual beam searchlight on the bridge canopy pierces the night. Anodized aluminum railings ring the aft deck with integrated rod holders and a secure ladder down to the cockpit. Technology rides aloft with the radar scanner and KVH TracVision and TracPhone on the canopies, DC breaker panels tucked neatly inside the console, LED cockpit floodlights casting brilliant working light, an anchor light mounted on a signal pole atop the hardtop, and teaser reels concealed within the bridge canopy locker. For the anglers, eight rod holders line the aft rails, ready for the strike.

Cockpit

The working heart of the yacht is a molded cockpit finished in white gelcoat, with washboards seamlessly formed with the house and decks for a unified, wipe clean surface. A padded coaming bolster wraps the action area, complemented by a live well in the transom and a center aft refrigerated fishbox with a split hatch. Port and starboard deck hatches with removable boxes grant clean access to the lazarette, while a molded mezzanine deck offers a cushioned bench seat with a refrigerated box beneath and direct engine room access within the mezzanine bench. Under the mezzanine, dedicated storage includes lockers, a box to receive Eskimo Ice, two tackle drawers, and a Kenyon electric grill housed beneath the starboard outboard

locker. The lazarette itself is shipshape, with steering cylinder, rudder feedback, trim tab reservoir and additional stowage. A custom Battle Saddle Fighting Chair stands as the centerpiece for serious angling. Molded steps lead up to a hinged door into the main saloon with storage under the treads, and separate molded steps rise to the side decks. A transom door with a hinged cap, discreet courtesy lights, and 50 Amp shore cords on Cable Master to port and starboard enhance functionality, while stern cleats to port and starboard with hawse pipes in the washboards and freshwater and seawater hose bibs to port complete this impeccably equipped arena.

Electric

Power autonomy is assured by two 20 kW Northern Lights generators and a robust bank of Deka 8A31DTM batteries. Charging is fast and flexible via two 24V/60A units and one 12V/70 charger, while shorepower quality is optimized through two Charles Iso Boost 50 transformers, delivering stable, protected electricity to every onboard system.

Navigation equipment

From the helm, three Simrad touchscreen multi function displays integrate radar, color sounder and AIS, all housed in an electronics console on a lift that stows neatly out of the weather. A Simrad autopilot and a dual beam searchlight expand command capability, with dual air horns for clear signaling. Communications are crisp through two ICOM VHF units, while Quick Shift electric single lever engine controls and a Ritchie compass provide intuitive, precise handling. CAT LED engine panels convey vital data at a glance, and four transducers, fitted port and starboard in the engine room, feed the navigation suite with accurate depth and fish finding intelligence.

Air conditioning

Climate comfort is delivered by two Webasto Blue Cool V Series condensing units in the engine room, governed by digital controls at each evaporator for pinpoint temperature tuning. A seawater cooling pump with strainer ensures reliable heat exchange, while a chilled water circulation pump forward in the engine room maintains silent, even cooling throughout the yacht.

Pumps

Fluid systems are comprehensively engineered, beginning with two sumps/tanks beneath the cabin sole and one in the engine room, and a network of six Rule automatic bilge pumps for vigilant dewatering. Freshwater pressure is constant thanks to a Mach 5 pump with an accumulator tank under the cabin sole, complemented by a dedicated seawater washdown pump. In the engine room forward, three refrigeration seawater pumps and one air conditioning seawater pump sustain cold chains and climate, all feeding from a stainless steel auxiliary sea chest centered forward. A chilled water circulation pump supports the air conditioning loop, while specialized service includes a livewell pump and a fishbox discharge pump. Waste management is robust with three black water macerators in the forward bilges. Fuel logistics are streamlined by a transfer pump in the engine room, and endurance is extended by a Watermakers Inc system forward in the machinery space. Steering precision is assured by an autopilot steering pump and a 24V hydraulic steering pump, both located to starboard outboard in the engine room. For the catch and the galley, an Eskimo Ice making unit sits port aft, paired with two Dometic refrigeration units in the same quadrant, and sanitation is completed by three Headhunter Royal Flush units.

Entertainment equipment

Onboard entertainment rises to the occasion with a KVH sat TV system feeding a Harman Kardon AVR 125 in the saloon paired with a TDK DA 5700 CD, while a Samsung TV in the saloon with DVD player sets the scene for movie nights. Private retreats include an LG flatscreen in the bow stateroom and a Samsung flatscreen in the master stateroom with DVD player and JVC stereo/CD, ensuring every space resonates with picture and sound.

Main saloon & galley

The main saloon welcomes with a carpet overlay aft and the warm look of simulated teak and holly laminate at the entry and throughout the galley, where wood cabinetry supports marble or granite countertops and an undermount sink, with storage both above and below the counters. Culinary finesse is assured by a KitchenAid four burner stovetop and an Emerson microwave in an over counter cabinet, supported by two SubZero 700BR drawer sets and an Avanti wine cooler in the saloon. Opposite the galley, a dining settee rises one step for an elevated view. Electric blinds grace the windows, and a clean vinyl headliner with flush mounted lights completes the ambiance. Aft to port, an L sofa with under seat storage surrounds a Hi/Lo coffee table, while a TV on a lift emerges elegantly from starboard side cabinetry for cinematic flair.

Disclaimer

The Company offers the details of this vessel in good faith but cannot guarantee or warrant the accuracy of this information nor warrant the condition of the vessel. A buyer should instruct his agents, or his surveyors, to investigate such details as the buyer desires validated. This vessel is offered

subject to prior sale, price change, or withdrawal without notice.

CONTACTS

Shestakov Yacht Sales is a brokerage company specializing in the sale and service of yachts worldwide. The company offers services for buying and selling both new and used motor yachts, sailing vessels, and luxury superyachts. They also provide yacht registration, insurance, technical maintenance, crew selection, and charter organization services across the U.S., Canada, Latin America, the Caribbean, and the Bahamas.

The founder and lead broker of the company is Andrey Shestakov, a licensed and certified expert with extensive experience in marine engineering and shipbuilding.

The company has an extensive network of partnerships with major yacht manufacturers worldwide and provides services in multiple languages, including Russian, Ukrainian, Spanish, and English. The office is in Dania Beach, Florida, USA.

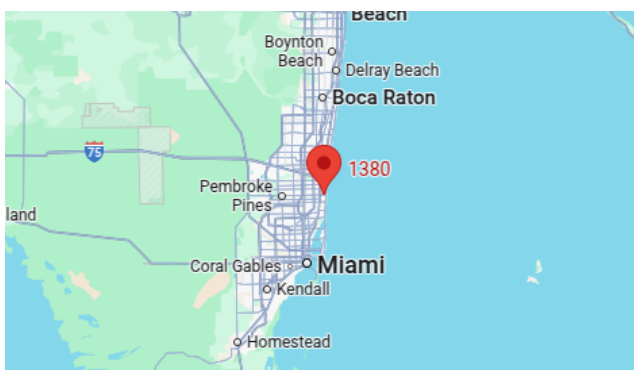
For more information and to view available yachts, you can visit the company's official website: <https://shestakovyachtsales.com>

Contact details

Phone: +1(954)274-4435

Email: andrey@shestakovyachtsales.com

Address



1380 Weeping Willow Way, Hollywood,
Florida 33019