



SHESTAKOV

Yacht Sales

OFFENSIVE - VIKING



Builder: [VIKING](#)

Beam: 18' 0" (5.77 m)

Year Built: 2017

Max Draft: 16' 11" (5.17 m)

Model: 62 CONVERTIBLE

Price: \$2,695,000 USD Subject to change.

[See full listing on our website](#)

Location: Quepos, Costa Rica

LOA: 62' 0" (18.90 m)

If you would like to buy a yacht **OFFENSIVE - VIKING** or would like help answering any questions concerning purchasing, selling, or chartering a yacht, please call **+1(954)274-4435** or click here on <https://shestakovyachtsales.com>

TABLE OF CONTENTS

OVERVIEW	3
SPECIFICATIONS	4
Basic Information	4
Dimensions	4
Speed, Capacities and Weight	4
Accommodations	4
Hull and Deck Information	5
Engine Information	5
GALLERY	6
DETAILED DESCRIPTION	20
CONTACTS	30

OVERVIEW

A 2017 Viking 62 Convertible that ranks among the most sought-after sportfishing yachts, prized for its commanding performance, thoughtful functionality, bluewater seakeeping and exceptional fishability, all presented within a capable four-stateroom convertible layout. This particular 2017 Viking 62 Convertible, Offensive, is finished in the preferred arrangement with high-end appointments. She is driven by M96L engines with warranty coverage through 3/14/28 or 5,200 hours and features a PBT full tower alongside a premium electronics suite designed for tournament-level fishing and system redundancy. Her striking Haze Grey hull is paired with a teak cockpit deck and teak covering boards, accentuated by a tasteful faux-teak transom and toe rail. Impeccably outfitted and prepared for competition, Offensive is the consummate tournament-ready Viking 62—contact us for complete specifications.

SPECIFICATIONS

Basic Information

Model Year:
2017

Country:
Costa Rica

Year Built:
2017

Dimensions

LOA:
62' 0" (18.90 m)

Max Draft:
16' 11" (5.17 m)

Beam:
18' 0" (5.77 m)

Speed, Capacities and Weight

Water Capacity:
310 Gallons

Fuel Capacity:
2150 Gallons

Accommodations

Total Heads:
3

Hull and Deck Information

Hull Material:

Fiberglass and Plastic Yachts

Hull Designer:

N/A

Deck Material:

Fiberglass

Interior Designer:

N/A

Hull Configuration:

N/A

Engine Information

Engines:

2

Engine Type:

Inboard

Manufacturer:

MTU

Fuel Type:

Diesel

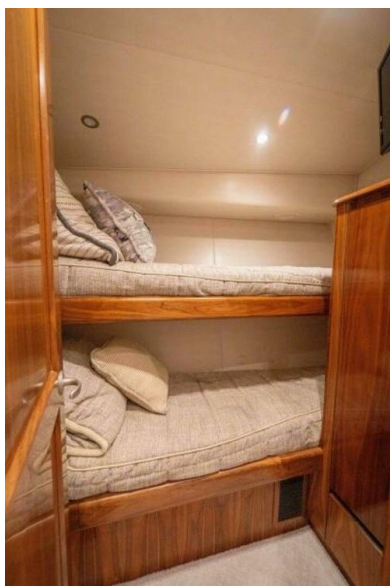
GALLERY

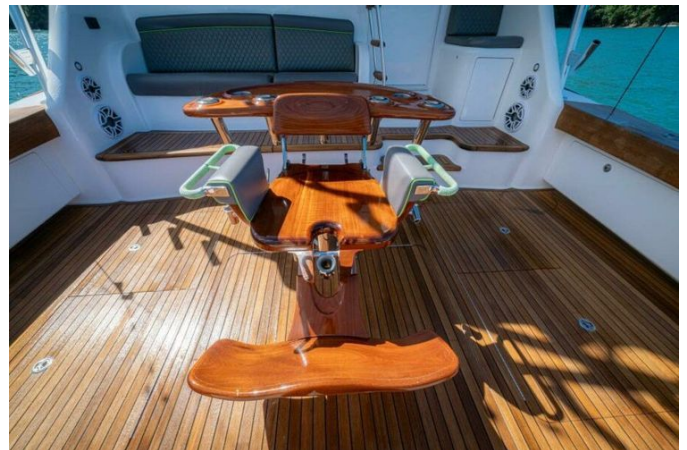


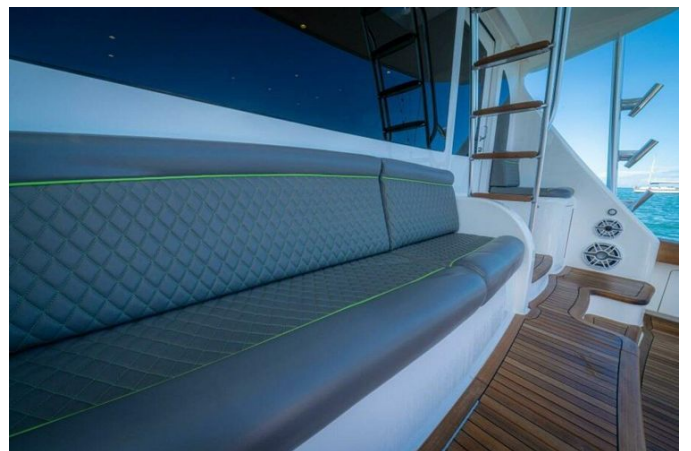










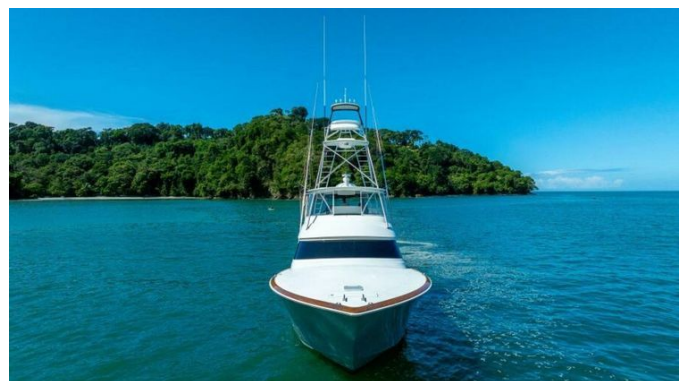
















DETAILED DESCRIPTION

Decor

Every interior element is arranged to evoke understated luxury: stateroom doors are fitted with salon door-type catches and interior doors are built in classic stile-and-rail construction, each detail complemented by polished nickel hardware, polished nickel cover plates for switches and receptacles and polished nickel interior light trim carried throughout. A custom two-tone Moccasin White headliner spans the areas and is combined with custom wallpaper material and exacting installation for a tailored result. The salon showcases an upgraded Dewberry-style sofa upholstered in Ultraleather Manila, while the helm and companion chairs are upholstered in Ultraleather Buckskin, a hue repeated in the Ultraleather Buckskin cushions on both the bridge and the mezzanine. Backless barstools preserve unobstructed sightlines, and a continuous rich walnut satin finish runs through the interior to unify the spaces with quiet elegance.

Salon

Stepping into the salon, a high gloss walnut cocktail table takes center stage, set on custom Amtico flooring at the entranceway in rich fumed oak. The aft side of the galley island is finished in matching wood, while refined crown molding carried through the salon, galley and dinette imparts a refined architectural presence. Details such as wood strips in the salon headliner, integrated wood wire boxes and a wood toe kick at the companionway stairs speak to meticulous joinery. A custom L-shaped dinette offers gracious seating with storage above, and a purposeful divider wall separates the sofa from the dinette in place of a conventional end table. Practical conveniences are equally considered: a clear icemaker, dimmers for the quartz lighting, a salon door

with an electric door opener, the electric panel located up for convenient access, and a dedicated salon switch that controls all hardtop and tower lights.

Galley/dinette

The galley and dinette are centered around custom Bianco Amtico countertops trimmed with quarter-inch beveled edges, paired with a mirrored backsplash and an undermount stainless-steel sink complemented by a satin nickel faucet. Meal preparation is effortless on a four-burner Miele surface-mount range, and refrigeration is plentiful with an undercounter refrigerator and freezer with drawers, alongside an additional undercounter refrigerator with drawers. A 110-volt outlet sits beside a switch on the underside of the upper cabinet above the sink for practical convenience, while cabinet lighting and a dimmer controlling the overhead LED lights allow a seamless shift from bright task light to intimate evening warmth. Underfoot, custom Amtico flooring in fumed oak brings both resilience and a refined, warm tone, a discreet pullout trash bin maintains a tidy environment, and opposite the galley a high-gloss wood table mounted on a matching wood pedestal is accompanied by backless bar stools upholstered in Ultraleather Manila for an elegant, streamlined dining setting.

Companionway

In the companionway, slender vertical wood strips set between the wall panels establish an elegant architectural cadence, imparting refined warmth and clear definition while delivering a bespoke sense of continuity as you move through the passage.

Master stateroom

The master stateroom features end tables topped in fine wood and custom

crown molding, all warmed by wall sconces and overhead LED lighting operated by a dimmer. Comfort is assured by a Viking Slumber number eight mattress, thoughtfully placed for unobstructed viewing of a 32-inch flat-panel TV. A Fusion CD/DVD stereo featuring Bluetooth capability elevates the entertainment, while an additional telephone outlet provides extra connectivity. An owner's safe is discreetly housed in the closet for secure storage.

Master stateroom head

The master head is a study in refined detail, anchored by a wood-faced lower vanity topped with Bianco Amtico finished with a one-quarter beveled edge, while underfoot custom Amtico flooring in fumed oak introduces a warm, contemporary character. The shower is fitted with satin nickel fixtures and sealed by a one-piece custom frameless glass door, and the ensemble is harmonized by a satin nickel faucet together with brushed nickel towel bars and rings for a cohesive, polished finish.

Forward stateroom

The forward stateroom serves as a peaceful sanctuary featuring a genuine centerline queen berth dressed with a Viking Slumber 6 mattress to ensure exceptional sleep quality. Onboard entertainment is provided by a 32-inch flat-panel television, while tasteful crown molding and adjustable overhead lighting equipped with dimmers allow you to refine the ambiance to suit any mood.

Forward stateroom head

Custom Amtico flooring in fumed oak establishes a warm, textured foundation,

while satin nickel shower fixtures and a coordinating satin nickel faucet create a cohesive, contemporary sheen. Brushed nickel towel bars and rings lend discreet, refined utility, and a wood-faced lower vanity introduces tactile elegance beneath a Bianco Amtico granite vanity top detailed with a crisp 1/4 beveled edge.

Port aft stateroom

The port aft stateroom is furnished with a Viking Slumber number six mattress to ensure sumptuous rest, while dimmable overhead LED lighting allows you to tailor the atmosphere to your preference and a 22-inch flat-screen TV offers effortless in-cabin entertainment.

Port stateroom

The port stateroom is luxuriously outfitted with a 22-inch flat-screen TV and overhead LED lighting that can be softened via a dimmer, while restful nights are ensured by a Viking Slumber #6 mattress; a finely crafted wood locker with a storage top keeps personal items neatly arranged and a Fusion CD/DVD stereo with Bluetooth capability provides modern, high-quality entertainment, marrying comfort and convenience in an elegant package.

Port stateroom head

The port stateroom head is conceived as an intimate sanctuary, anchored by custom fumed oak Amtico flooring that brings warm, contemporary character to the space. Satin nickel shower fixtures and a matching satin nickel faucet establish a cohesive, softly luminous finish, while brushed nickel towel bars and rings introduce refined, tailored accents. The lower vanity presents a wood face beneath a Corian vanity countertop fitted with a bone sink and is topped

by a granite vanity top in Bianco Amtico with a ¼ beveled edge, offering crisp definition and polished elegance.

Cockpit

Designed for the chase yet finished for effortless comfort, the cockpit centers on a refrigerated cockpit step box complemented by a dedicated crushed ice machine, while a sculpted transom coaming embraces a generous fish box with a split lid for rapid access. That transom box is plumbed as a live well without a window or light and is supported by fittings and plumbing for an additional on-deck live well, freezer bait trays, and Release marine rod holders; a ball valve allows the box to be pressurized while running. Threaded cockpit scuppers control washdown with accuracy, storage lockers are tucked beneath the port and starboard coamings, and a supplementary freshwater outlet on the port side brings the total to two. Ambient and functional lighting are provided by tri-color fixtures in the aft deck overhang and matching tri-color rope lights beneath the coaming, creating an inviting atmosphere for long days and evenings on the bite.

The teak cockpit sole continues forward to the mezzanine, with coordinating teak ladder treads elevating the aesthetic and underfoot grip, while freezer storage is incorporated into the mezzanine seat and both port and starboard undermounted mezzanine step boxes are refrigerated. Comfort is enhanced by the Cruisair “cool breeze” mezzanine air system, and power is readily available via two 24V outlets forward under the coaming—one on each side—as well as a 12VDC 30-amp outlet forward under the coaming dedicated to teaser reels. Entertainment and ambiance are delivered by a Fusion MS-NRX2001 stereo driving JL Audio speakers, a JL Audio subwoofer, and a JL Audio amplifier, and a White Stamode forward mask cover provides a polished, protective finish when secured at the dock.

Flybridge

The flybridge has been meticulously arranged with recessed electronics lockers—one containing a bespoke compass—and molded recesses in the fiberglass that act as refined finger pulls for the acrylic lid. A dedicated bridge freezer is complemented by a refrigerated drink box to keep provisions perfectly chilled, while a freshwater outlet on the bridge provides convenient service. The helm is a Release teak pod fitted with electronic single-lever engine controls that incorporate bow thruster operation and are supported by MTU trolling valves, delivering precise handling and intuitive command. Safety and circulation are enhanced by a powder-coated grab rail mounted atop the helm on the starboard side and a handrail running along the side of the helm console above the access door. The flybridge jumpseat boasts a removable backrest that has been custom raised by four to five inches for superior lumbar support, and the bench seating is fitted with stainless steel gas springs for effortless access to the storage below. Practical systems include a dedicated forward feed for the tower with a clearly labeled shutoff valve located in the forward flybridge locker and a watermaker control panel positioned within easy reach. Final touches such as Buell air horns and cushions upholstered in Ultraleather reinforce the bridge's balance of utility, refinement, and confident seagoing presence.

Flybridge electronics

From the flybridge, command is delivered through a Furuno NavNet 3D 25 kW, 96-mile radar mounted on a 6-foot array, its imagery presented across three KEP 17-inch LED glass-bridge displays and supported by a Garmin GPS MAP 8208 8-inch MFD for seamless charting and route planning. Weather and traffic intelligence are provided by a Garmin 6XM52 weather receiver together with a Garmin AIS-600 AIS transponder. Sub-surface awareness is supplied by a

Furuno FCV 1900 sounder partnered with Furuno 2 kW 50 Hz and 2 kW 200 KHz transducers, while a Garmin GSD-26 Chirp video sounder adds further clarity to fishfinding and depth readings. Precise course keeping comes courtesy of the Garmin GHP Reactor autopilot, and voice communications are assured by two Garmin IC-M604 VHF radios. All navigational and sensor data are unified on a Furuno RD33 data organizer, complete with temperature and depth readouts. Onboard entertainment is delivered through a Fusion MS-UD750 marine stereo with Bluetooth and a docking station, and situational awareness is enhanced by three Gost PM Mini IR ball cameras installed in the engine room to port, center, and starboard, complemented by a FLIR M625L thermal/low-light camera.

Palm Beach Tower

Perched atop the sixty-two-foot convertible, the Palm Beach tuna tower features a sculpted molded top and an eight-foot separation, its brushed pipework accentuated by twin antennas mounted on stand-offs. Evening passages are lit by six Lumitec Mirage tri-color hardtop lights set into fiberglass recesses that project red, white, and blue, while a substantial oval radar pod with a sliding door provides a discreet home for the teaser reels. The molded standing platform houses a coupler box and a three-in-one 24V LED light pod framed with a stainless-steel bezel, along with a molded 24V LED forward platform light similarly finished in stainless steel. Operations are controlled from a 63-inch command box with a flush-mounted compass and a satin-black top, accompanied by a recessed electronics box with lid and an electric fold-down electronics compartment for easy access. Above, a molded tower sunshade with internal tracks and five welded antenna mounts—its frame also rendered in satin black—delivers shelter and form, the entire assembly gliding on powder-coated aluminum flangeless track for a refined appearance. Two additional Lumitec Mirage tri-color LEDs recessed in the sunshade top

continue the red, white, and blue lighting scheme. Purpose-built for serious fishing, the tower is equipped with eight polished PBT-style rod holders welded to the rail and six more polished PBT-style holders on the aft legs—three to port and three to starboard—while steering and control are managed through the MTU Blue Vision system and a U-shaped safety rail secures the ladder opening. The spread is anchored by Rupp Bigg Riggs forty-three-foot outriggers in a heavy-duty three-spreader setup with bridge release and a substantial solid aft bar, all locked in place by rigger locks and complemented by a Rupp center rigger. Two recessed electric MIYA EPOCH US9 HD heavy-duty 24V teaser reels stand ready, an integrated washdown supplies water to the tower, and flag protocol is observed with an aft flag staff plus welded flag staffs on each side of the platform perimeter rail. Comfort and protection are delivered by a bench seat with backrest and an EZ2CY three-sided enclosure that runs track-to-track to the edge with a jump-seat backrest, aided by three air vents in the forward top panels and two Lumitec Mirage tri-color LED lights recessed under the platform in the same red, white, and blue palette. For superior strength and reduced weight, the hardtop, platform, and tower sunshade are all constructed from carbon fiber.

Tower electronics

Positioned in the tower, a Garmin GPS Map 8212 8" MFD delivers pinpoint navigation with an elegant, easy-to-read charting interface and integrated system control that keeps situational awareness instantly accessible, while an ICOM HM-162 VHF Command Mic provides robust, tactile VHF operation for dependable, crystal-clear voice communications.

Bilge

The forward bilge and anchor locker are finished in Awlgrip, creating a pristine,

long-wearing, and easy-to-maintain surface, while magnetic switches manage all bilge lighting to provide reliable, instant illumination.

Engine room/mechanical

The machinery space is centered on twin MTU 12V2000 M96L main engines, supported by an MTU extended warranty through 3/14/28 or 5,200 hours, while a Seakeeper SK26 provides refined stability whether at rest or underway. Electrical fortitude has been enhanced with an upgraded transformer configured to act as a voltage stabilizer for the second electrical inlet, the addition of an OctoPlex system installed in the engine room, and twin Onan 21.5 kW generators that supply abundant, redundant ship's power. Fluid systems are arranged for dependable operation, with a back-up pump for the seawater system plumbed in parallel, 24V fuel priming pumps, and a back-up fuel transfer pump likewise plumbed in parallel. Extended autonomy is achieved with a 1,400 GPD watermaker featuring auto backflush paired with a Spot Zero system, and a tee in the dockside water manifold that permits the water tank to be filled from cp. Practical refinements include two white-painted tool boxes in the engine room—each four-drawer and twelve inches wide—a Willy Vac installed in place of the engine room cleanout bilge pump, and a conveniently located switch at the entrance controlling the fighting chair lights.

Hull

The hull is finished in an understated haze grey that radiates refined elegance and is complemented by a bespoke non-metallic boot stripe. A faux teak toe rail and a matching faux teak transom, each sealed with a clear coat, lend a timeless, yacht-grade appearance. An additional forward fuel tank increases total capacity to three tanks, enhancing range and operational flexibility. Ride comfort and stability are provided by a Seakeeper SK26 gyro stabilizer, while a

bow thruster delivers assured, precise control in close quarters.

Deck and exterior

Nestled within the anchor locker, a dedicated freshwater washdown pairs with a built in anchor bracket and subtle LED illumination to keep ground tackle operations tidy, orderly and perfectly visible. Substantial cleats positioned fore and aft on the bow provide flexible, dependable mooring arrangements, while the salon's forward window is safeguarded by a bespoke mask with cover that preserves clarity and shields the interior from sun and spray.

CONTACTS

Shestakov Yacht Sales is a brokerage company specializing in the sale and service of yachts worldwide. The company offers services for buying and selling both new and used motor yachts, sailing vessels, and luxury superyachts. They also provide yacht registration, insurance, technical maintenance, crew selection, and charter organization services across the U.S., Canada, Latin America, the Caribbean, and the Bahamas.

The founder and lead broker of the company is Andrey Shestakov, a licensed and certified expert with extensive experience in marine engineering and shipbuilding.

The company has an extensive network of partnerships with major yacht manufacturers worldwide and provides services in multiple languages, including Russian, Ukrainian, Spanish, and English. The office is in Dania Beach, Florida, USA.

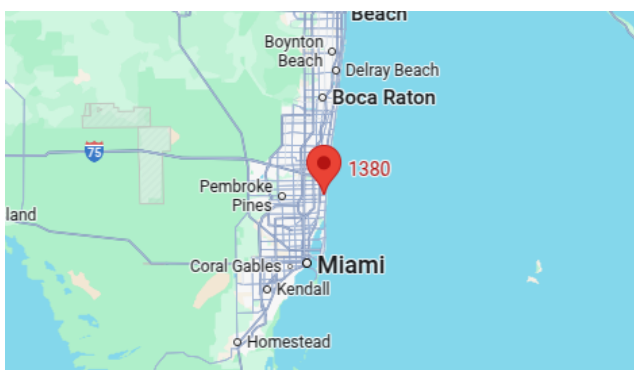
For more information and to view available yachts, you can visit the company's official website: <https://shestakovyachtsales.com>

Contact details

Phone: +1(954)274-4435

Email: andrey@shestakovyachtsales.com

Address



1380 Weeping Willow Way, Hollywood,
Florida 33019