



MAZU 62 - MAZU YACHTS



Builder: [MAZU YACHTS](#)

LOA: 62' 0" (19 m)

Year Built: 2025

Beam: 17' 0" (5.30 m)

Model: 62

Min Draft: 3' 11" (1.20 m)

Price: \$3,171,582.61 USD Subject to change.

Cruising Speed: 34 Knots (39.13 MPH)

[See full listing on our website](#)

Location: Altinova, Turkey

Max Speed: 40 Knots (46.03 MPH)

If you would like to buy a yacht **MAZU 62 - MAZU YACHTS** or would like help answering any questions concerning purchasing, selling, or chartering a yacht, please call **+1(954)274-4435** or click here on <https://shestakovyachtsales.com>

TABLE OF CONTENTS

OVERVIEW 3

SPECIFICATIONS 4

 Basic Information 4

 Dimensions 4

 Speed, Capacities and Weight 4

 Hull and Deck Information 5

 Engine Information 5

GALLERY 6

DETAILED DESCRIPTION 8

CONTACTS 10

OVERVIEW

The Mazu Yachts 62 is a stunning superyacht chase boat, offering generous interior volume and vast deck spaces. This 19.25-meter yacht can effortlessly serve as a private yacht, akin to the other exceptional models from Mazu Yachts.

Designed for both stability and comfort, the Mazu Yachts 62 provides outstanding performance on the water. Its sleek and sporty design is enhanced by spacious lounging and sunbathing areas on the exterior, ideal for unwinding and enjoying the surroundings.

Inside, you'll find a fully equipped galley with a kitchen, sink, ample storage, microwave, oven, and a 65-liter ISTOTHERM fridge. The yacht accommodates up to 6 guests in 3 double cabins, each featuring storage options, window blinds, LED spotlights, and a 32-inch Samsung TV, all under a breathtaking glass ceiling. Powered by twin Volvo Penta IPS 1350 engines, the Mazu Yachts 62 cruises smoothly at 32 knots, reaching thrilling maximum speeds of 41 knots. Discover yacht sales at the current boat location and seize the chance to own a yacht that embodies luxury and high performance.

SPECIFICATIONS

Basic Information

Category:
Motor yachts

Year Built:
2025

Model Year:
2025

Country:
Turkey

Dimensions

LOA:
62' 0" (19 m)

Beam:
17' 0" (5.30 m)

Min Draft:
3' 11" (1.20 m)

Speed, Capacities and Weight

Cruise Speed:
34 Knots (39.13 MPH)

Water Capacity:
237.76 Gallons

Max Speed:
40 Knots (46.03 MPH)

Fuel Capacity:
792.52 Gallons

Hull and Deck Information

Hull Material:

Fiberglass and Plastic Yachts

Hull Designer:

N/A

Deck Material:

Carbon Fiber

Interior Designer:

N/A

Hull Configuration:

N/A

Engine Information

Engines:

2

Engine Type:

Inboard

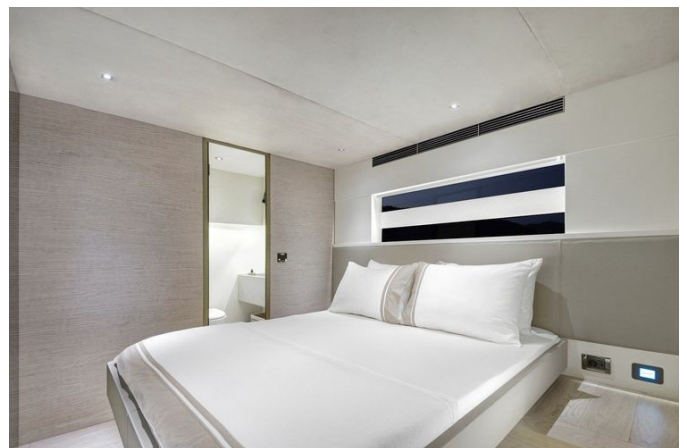
Manufacturer:

Volvo Penta

Fuel Type:

Diesel

GALLERY





DETAILED DESCRIPTION

Section name

The Mazu Yachts 62 is an extraordinary superyacht chase boat, offering ample interior space and extensive deck areas, making it a versatile vessel that can also function as a private yacht, similar to other models in the Mazu Yachts collection. This 19.25-meter yacht is expertly crafted for both stability and comfort, delivering exceptional performance on the water. Its sleek and sporty design is evident throughout, with the exterior featuring generous lounging and sunbathing areas that invite relaxation and enjoyment.

Inside, the Mazu Yachts 62 features a fully equipped galley, complete with a kitchen, sink, storage, microwave, oven, and a 65-liter ISTOTHERM fridge, meeting all culinary needs while on board. The yacht accommodates up to six guests in three double cabins, each furnished with ample storage, window blinds, LED spotlights, and a 32-inch Samsung TV. The cabins also boast a stunning glass ceiling, enhancing the sense of space and luxury.

This impressive yacht is powered by two Volvo Penta IPS 1350 engines, allowing it to cruise comfortably at 32 knots and reach a top speed of 41 knots. The Mazu Yachts 62 seamlessly blends technical excellence with luxurious features, making it an outstanding choice for those seeking both performance and comfort on the water.

Disclaimer

The company provides the information about this vessel with sincere intentions, but it cannot ensure or confirm the accuracy of these details, nor can it guarantee the vessel's condition. Potential buyers are advised to have their agents or surveyors verify any specifics they wish to confirm. It is crucial

to understand that this vessel is available subject to prior sale, price adjustments, or removal from the market without prior notice.

CONTACTS

Shestakov Yacht Sales is a brokerage company specializing in the sale and service of yachts worldwide. The company offers services for buying and selling both new and used motor yachts, sailing vessels, and luxury superyachts. They also provide yacht registration, insurance, technical maintenance, crew selection, and charter organization services across the U.S., Canada, Latin America, the Caribbean, and the Bahamas.

The founder and lead broker of the company is Andrey Shestakov, a licensed and certified expert with extensive experience in marine engineering and shipbuilding.

The company has an extensive network of partnerships with major yacht manufacturers worldwide and provides services in multiple languages, including Russian, Ukrainian, Spanish, and English. The office is in Dania Beach, Florida, USA.

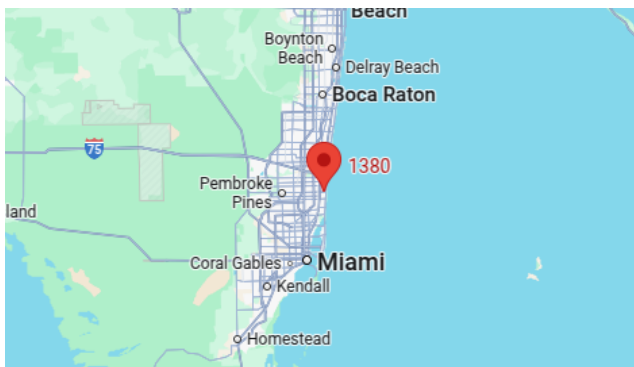
For more information and to view available yachts, you can visit the company's official website: <https://shestakovyachtsales.com>

Contact details

Phone: +1(954)274-4435

Email: andrey@shestakovyachtsales.com

Address



1380 Weeping Willow Way, Hollywood,
Florida 33019