



MARTINI - NORDHAVN



Builder: [Nordhavn](#)

LOA: 63' 0" (19.20 m)

Year Built: 2022

Beam: 18' 0" (5.49 m)

Model: N63

Max Draft: 21' 11" (6.67 m)

Price: \$2,990,000 USD Subject to change.

Cruising Speed: 8 Knots (9.21 MPH)

[See full listing on our website](#)

Location: Saint George's, Grenada

Max Speed: 9.20 Knots (10.59 MPH)

If you would like to buy a yacht **MARTINI - NORDHAVN** or would like help answering any questions concerning purchasing, selling, or chartering a yacht, please call **+1(954)274-4435** or click here on <https://shestakovyachtsales.com>

TABLE OF CONTENTS

OVERVIEW 3

SPECIFICATIONS 4

 Basic Information 4

 Dimensions 4

 Speed, Capacities and Weight 4

 Accommodations 5

 Hull and Deck Information 5

 Engine Information 5

GALLERY 6

DETAILED DESCRIPTION 25

CONTACTS 39

OVERVIEW

Claim the horizon aboard a superb long-range passagemaker

Martini is more than a destination vessel; she is the manner in which you cross oceans. Built expressly for serene long-distance travel, her true full-displacement hull and dependable John Deere propulsion underpin an approximate 3,000 nm cruising range, creating a bluewater motor yacht that balances safety and refinement for global exploration. Lovingly maintained and thoughtfully upgraded by an experienced owner, she marries Nordhavn's famed engineering with bespoke enhancements that increase both comfort and capability. Modernized systems and beautifully executed interior finishes harmonize with rugged seagoing foundations to offer the rare union of seaworthiness and luxury, perfectly suited to liveaboard voyaging, extended cruising, and serious passagemaking.

Specified for US 60 Hz operation with US duty paid, Martini also carries an onboard transformer for 50 Hz shoreside compatibility, opening additional cruising options worldwide. Navigation and situational awareness are handled by a comprehensive Furuno navigation suite, while hydraulic bow and stern thrusters simplify close-quarters handling and ABT-Trac stabilization keeps passages composed in lively seas. High-speed Starlink satellite internet maintains connectivity even when far from the usual routes.

Supported by over \$100,000 in spare parts for robust redundancy and peace of mind in remote waters, Martini stands out as a capable trawler yacht and pilothouse explorer—an accomplished long-range cruiser ready to carry you farther in consummate style. Request additional photos and details to appreciate her full specification.

SPECIFICATIONS

Basic Information

Category:
Motor yachts

Year Built:
2022

Sub category:
Trawler

Country:
Grenada

Model Year:
2022

Dimensions

LOA:
63' 0" (19.20 m)

Max Draft:
21' 11" (6.67 m)

Beam:
18' 0" (5.49 m)

Speed, Capacities and Weight

Cruise Speed:
8 Knots (9.21 MPH)

Water Capacity:
600 Gallons

Max Speed:
9.20 Knots (10.59 MPH)

Fuel Capacity:
2483 Gallons

Accommodations

Total Heads:

4

Crew Cabin:

1

Hull and Deck Information

Hull Material:

Fiberglass and Plastic Yachts

Hull Designer:

N/A

Deck Material:

Fiberglass

Interior Designer:

N/A

Hull Configuration:

N/A

Engine Information

Engines:

4

Engine Type:

Inboard

Manufacturer:

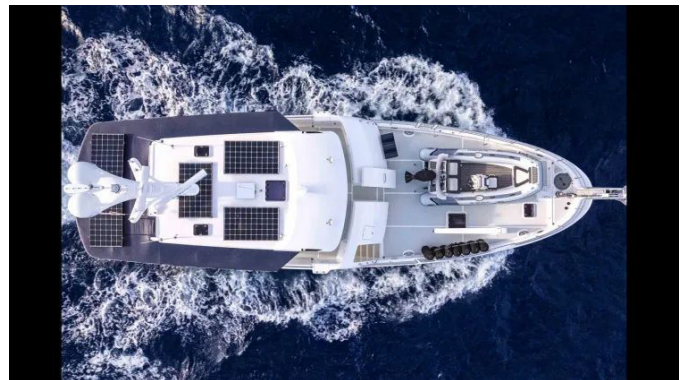
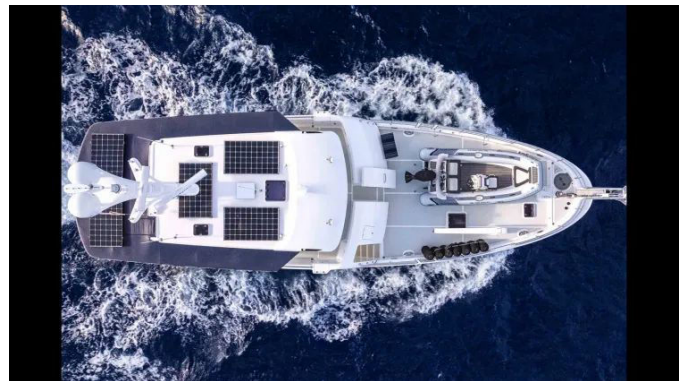
John Deere

Fuel Type:

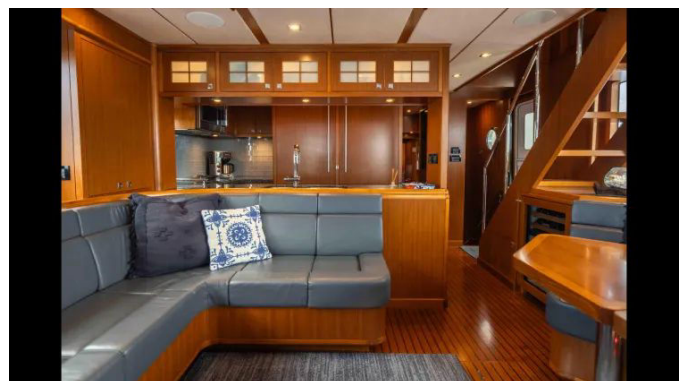
Diesel

GALLERY





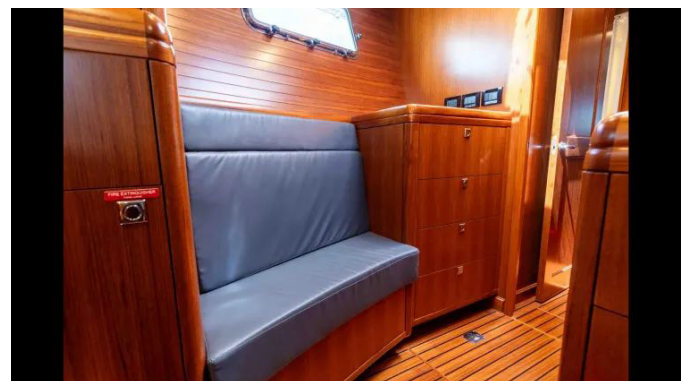




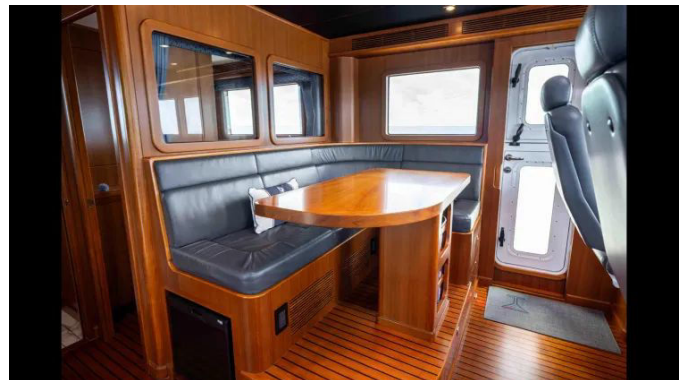
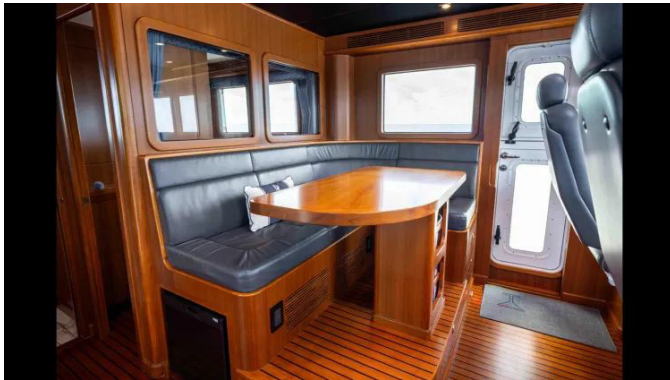








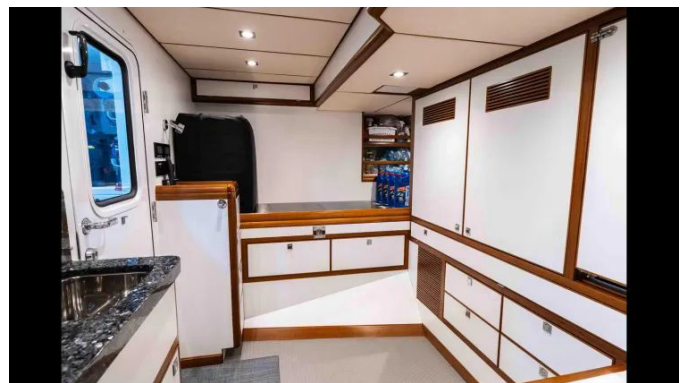


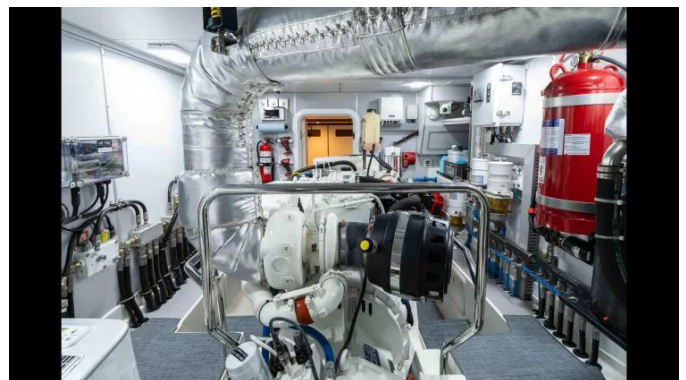


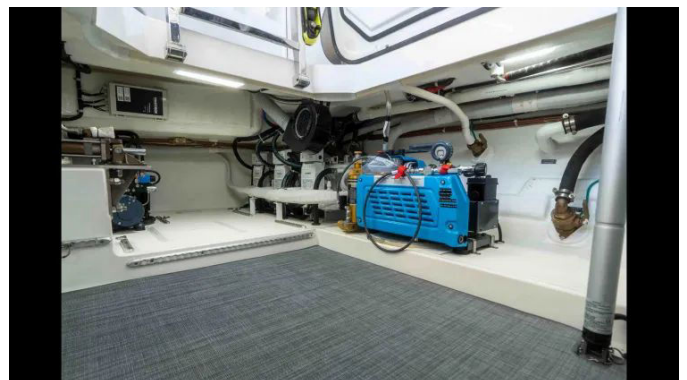


















DETAILED DESCRIPTION

Exterior

The extended factory swim platform sets the tone for purposeful elegance, finished with staple rails, a custom MOB ladder, and a large folding swim ladder secured by a bespoke pin that exceeds the robustness of the original equipment. Shoreside power is handled by a Glendinning shore power cord system with a 50 amp plug and 65 ft length, while a bimini shade on carbon fiber poles deploys for generous shade or buttons down for complete privacy. Aft, side shade curtains frame soft Infinity decking underfoot throughout, and the cockpit is arranged for effortless entertaining with a wet-bar and sink, an Isothem refrigerator, a Miele BBQ grill, generous tackle drawer storage, a WiseNet aft facing camera, JL Audio stereo speakers, and an ingeniously designed drink table that mounts into a rod holder. A hammock chair clips into a ceiling eye and doubles as a lifting point for removing heavy items from the lazarette, while comfortable seating is complemented by an additional teak table and chairs, each with its own heavy weather stowage. Practical comforts include a hot and cold shower hose, a Maxwell VC2000 stern capstan, and a power lift for the lazarette hatch. The aft docking station positions electronic gear controls, an Icom HM 195GB VHF radio, bow and stern thruster controls, windlass control, and steering control precisely at hand for confident close quarters maneuvering. On the bridge deck, a U shaped settee wraps a dining table that drops to form a day bed opposite a custom bench seat that conceals generous storage; rod holders mount to stainless rails with an additional overhead rod rack. A stainless steel awning envelopes the aft bridge deck and sides with integrated lighting, complemented by a custom stainless pulley system and stainless racks for kayaks. Wing stations to port and starboard make docking effortless and include electronic gear controls, an

Icom HM 195GB VHF radio, bow and stern thruster controls, windlass and steering control, and an upgraded bracket to hold the hatch open in strong winds. For self-sufficiency and safety, the yacht carries a life raft, life ring, a sea anchor and drogue for extreme weather, an ACR EPIRB mounted on the monkey island, and five solar panels also mounted on the monkey island. Forward—accessed via a large door in the Portuguese bridge or by starboard-side exterior stairs from the main deck—the foredeck features a Glendinning shore power cord system with a 50 amp plug and 75 ft length, Smart Plug 50 amp and 30 amp connections, and a stainless-steel fender storage rack sized for six Polyform HTM 4 fenders; several are supplied with custom wool and leather fender hooks that protect paint and allow fine adjustment. A stainless-steel kayak rack sits near a Maxwell hydraulic windlass with cover, controlled by foot pedals as well as from all four helm stations. Ground tackle is secured by a Rocna 110 (243 lbs) with swivel, while a Steelhead Marine ES1500 telescopic davit with wireless remote handles tender and cargo duty, supported by a full spare kit aboard for redundancy. The tender is a Highfield SP420 RIB with an aluminum hull and eight-person capacity, equipped with a Garmin navigation display, depth sounder, Seadeck, diamond-stitched upholstery, rod holders, cup holders, and a bimini top that stows easily; power management includes a built-in 110 V outlet charger and solar panels integrated into the tender cover, complemented by an ICOM VHF radio, USB and 12 V charging outlets, JL Audio stereo speakers, navigation light, tool kit, safety kit with flares, a spare propeller, and a retractable water-ski tow pole. Propulsion for the tender is a Yamaha F60LB 60 hp outboard engine (SN: 6C5 L 1100150) with cowling cover and a spare lower unit for added assurance.

Exterior

The extended factory swim platform sets the tone for purposeful elegance, finished with staple rails, a custom MOB ladder, and a large folding swim

ladder secured by a bespoke pin that exceeds the robustness of the original equipment. Shoreside power is handled by a Glendinning shore power cord system with a 50 amp plug and 65 ft length, while a bimini shade on carbon fiber poles deploys for generous shade or buttons down for complete privacy. Aft, side shade curtains frame soft Infinity decking underfoot throughout, and the cockpit is arranged for effortless entertaining with a wet-bar and sink, an Isothem refrigerator, a Miele BBQ grill, generous tackle drawer storage, a WiseNet aft facing camera, JL Audio stereo speakers, and an ingeniously designed drink table that mounts into a rod holder. A hammock chair clips into a ceiling eye and doubles as a lifting point for removing heavy items from the lazarette, while comfortable seating is complemented by an additional teak table and chairs, each with its own heavy weather stowage. Practical comforts include a hot and cold shower hose, a Maxwell VC2000 stern capstan, and a power lift for the lazarette hatch. The aft docking station positions electronic gear controls, an Icom HM 195GB VHF radio, bow and stern thruster controls, windlass control, and steering control precisely at hand for confident close quarters maneuvering. On the bridge deck, a U shaped settee wraps a dining table that drops to form a day bed opposite a custom bench seat that conceals generous storage; rod holders mount to stainless rails with an additional overhead rod rack. A stainless steel awning envelopes the aft bridge deck and sides with integrated lighting, complemented by a custom stainless pulley system and stainless racks for kayaks. Wing stations to port and starboard make docking effortless and include electronic gear controls, an Icom HM 195GB VHF radio, bow and stern thruster controls, windlass and steering control, and an upgraded bracket to hold the hatch open in strong winds. For self sufficiency and safety, the yacht carries a life raft, life ring, a sea anchor and drogue for extreme weather, an ACR EPIRB mounted on the monkey island, and five solar panels also mounted on the monkey island. Forward—accessed via a large door in the Portuguese bridge or by starboard side exterior stairs from the main deck—the foredeck features a

Glendinning shore power cord system with a 50 amp plug and 75 ft length, Smart Plug 50 amp and 30 amp connections, and a stainless steel fender storage rack sized for six Polyform HTM 4 fenders; several are supplied with custom wool and leather fender hooks that protect paint and allow fine adjustment. A stainless steel kayak rack sits near a Maxwell hydraulic windlass with cover, controlled by foot pedals as well as from all four helm stations. Ground tackle is secured by a Rocna 110 (243 lbs) with swivel, while a Steelhead Marine ES1500 telescopic davit with wireless remote handles tender and cargo duty, supported by a full spare kit aboard for redundancy. The tender is a Highfield SP420 RIB with an aluminum hull and eight person capacity, equipped with a Garmin navigation display, depth sounder, Seadeck, diamond stitched upholstery, rod holders, cup holders, and a bimini top that stows easily; power management includes a built in 110 V outlet charger and solar panels integrated into the tender cover, complemented by an ICOM VHF radio, USB and 12 V charging outlets, JL Audio stereo speakers, navigation light, tool kit, safety kit with flares, a spare propeller, and a retractable water ski tow pole. Propulsion for the tender is a Yamaha F60LB 60 hp outboard engine (SN: 6C5 L 1100150) with cowling cover and a spare lower unit for added assurance.

Interior

At the bridge, two Stidd helm chairs in soft Ultraleather face a commanding helm, while a large raised L shaped settee wraps a teak table to create a social, secure vantage point underway. Control and situational awareness are extraordinary: TRACLink ABT Trac stabilizer control pairs with paravane roll stabilizers as a redundant system; Sea Fire alarms protect both the engine room and lazarette; and communications are anchored by two Icom IC M605 VHF radios with AIS transceiver. Navigation and sensing include B&G high frequency forward facing sonar, Furuno ECS, four large screens plus additional displays for Maretron and sonar, two Furuno Open Array Radars, a

Simrad AP70MK2 autopilot with Simrad backup autopilot, Simrad non follow up steering control, and a Maxwell windlass AA560 chain counter. A Furuno Compact Dome Satellite Compass provides highly accurate attitude data to radar, plotter, autopilot, fish finder, and sonar, while Timezero ECS runs from a Dell computer. Night operations benefit from a gyro stabilized FLIR night vision camera. Comprehensive CCTV coverage includes views of steering gear, forepeak water systems, mast, main deck aft, starboard main deck walkway, forward and aft facing engine room cameras, and a portable engine room camera that clips in place to monitor specific components. Propulsion management combines electronic engine gear control for the main engine with mechanical gear and throttle control for the wing engine, supported by ABT Trac bow and stern thruster controls for the hydraulic thrusters and Hynautic wheel steering. A custom rack secures the navigation computer, while an IRIDIUM sat phone, Intellian sat, ACR spotlight control, a Ritchie 4.5" compass, and Fusion stereo control round out command. Comfort and convenience include an Intertek drinks refrigerator (NR751BB), 30000 BTU Dometic reverse cycle heating and air conditioning, cup holders, USB outlets and 110 V outlets, and Weems & Plath barometer, clock, and comfort meter (temperature and humidity), with a Motorola intercom phone tying in shipwide. In the salon, Dutch doors with phantom bug screens grace all four entrances to the boat, a wet locker awaits coats at entry, and an additional factory built custom cabinet expands stowage. Entertainment centers around a 50 inch Sony Smart TV with Apple TV, while 48000 BTU Dometic reverse cycle heating and air conditioning maintains the perfect climate. Custom bottle and glassware storage serves a dining arrangement of two tables that combine into one large table with a leaf insert, set among two large sofa couches that deliver generous space for hosting. The galley is specified for serious cruising: large pantry storage; Thermador Professional Series MU30WSU 30 inch over the range microwave with 2.1 cu. ft. capacity, 4 speed, 385 CFM, sensor cooking, and 1100 watts power, with spare

internals aboard for redundancy; Thermador Professional Single Wall Oven 30" Stainless Steel POD301W/01; Thermador Professional safe induction cooktop; two GE Monogram 20.2 cu. ft. integrated bottom freezer refrigerators with convertible drawer and ice maker; a trash compactor; dual stainless steel sinks with granite covers to extend counter space; a Sub Zero 46 bottle wine refrigerator (UW 24/O R); and a Bosch integrated dishwasher 18" (SPV68U53UC).

Interior

At the bridge, two Stidd helm chairs in soft Ultraleather face a commanding helm, while a large raised L shaped settee wraps a teak table to create a social, secure vantage point underway. Control and situational awareness are extraordinary: TRACLink ABT Trac stabilizer control pairs with paravane roll stabilizers as a redundant system; Sea Fire alarms protect both the engine room and lazarette; and communications are anchored by two Icom IC M605 VHF radios with AIS transceiver. Navigation and sensing include B&G high frequency forward facing sonar, Furuno ECS, four large screens plus additional displays for Maretron and sonar, two Furuno Open Array Radars, a Simrad AP70MK2 autopilot with Simrad backup autopilot, Simrad non follow up steering control, and a Maxwell windlass AA560 chain counter. A Furuno Compact Dome Satellite Compass provides highly accurate attitude data to radar, plotter, autopilot, fish finder, and sonar, while Timezero ECS runs from a Dell computer. Night operations benefit from a gyro stabilized FLIR night vision camera. Comprehensive CCTV coverage includes views of steering gear, forepeak water systems, mast, main deck aft, starboard main deck walkway, forward and aft facing engine room cameras, and a portable engine room camera that clips in place to monitor specific components. Propulsion management combines electronic engine gear control for the main engine with mechanical gear and throttle control for the wing engine,

supported by ABT Trac bow and stern thruster controls for the hydraulic thrusters and Hynautic wheel steering. A custom rack secures the navigation computer, while an IRIDIUM sat phone, Intellian sat, ACR spotlight control, a Ritchie 4.5" compass, and Fusion stereo control round out command. Comfort and convenience include an Intertek drinks refrigerator (NR751BB), 30000 BTU Dometic reverse cycle heating and air conditioning, cup holders, USB outlets and 110 V outlets, and Weems & Plath barometer, clock, and comfort meter (temperature and humidity), with a Motorola intercom phone tying in shipwide. In the salon, Dutch doors with phantom bug screens grace all four entrances to the boat, a wet locker awaits coats at entry, and an additional factory built custom cabinet expands stowage. Entertainment centers around a 50 inch Sony Smart TV with Apple TV, while 48000 BTU Dometic reverse cycle heating and air conditioning maintains the perfect climate. Custom bottle and glassware storage serves a dining arrangement of two tables that combine into one large table with a leaf insert, set among two large sofa couches that deliver generous space for hosting. The galley is specified for serious cruising: large pantry storage; Thermador Professional Series MU30WSU 30 inch over the range microwave with 2.1 cu. ft. capacity, 4 speed, 385 CFM, sensor cooking, and 1100 watts power, with spare internals aboard for redundancy; Thermador Professional Single Wall Oven 30" Stainless Steel POD301W/01; Thermador Professional safe induction cooktop; two GE Monogram 20.2 cu. ft. integrated bottom freezer refrigerators with convertible drawer and ice maker; a trash compactor; dual stainless steel sinks with granite covers to extend counter space; a Sub Zero 46 bottle wine refrigerator (UW 24/O R); and a Bosch integrated dishwasher 18" (SPV68U53UC).

Accommodations

The master cabin is a private retreat, climate controlled by a 16000 BTU

Dometic reverse cycle system and appointed with a 42 inch Sony TV, a Furuno multi function display, and a Furuno vertical remote control for navigation that can be used when displaying data on the cabin TV. A Motorola intercom phone keeps you connected, while a mirror crowns the dresser with upgraded larger storage drawers for extended cruise practicality. In the master ensuite, a granite countertop with sink, a shower with seat and custom teak grate, and a Tecma macerating electric head deliver yacht class comfort. The VIP cabin greets guests with a cedar lined closet, bedside USB charging outlets, eight opening portholes, and an emergency escape ladder, plus a Sony 42 inch Smart TV paired to a Klipsch Reference sound bar for immersive entertainment. The VIP ensuite, which also serves as the main deck day head, features a granite countertop with sink, a shower with seat and custom teak grate, and a Tecma macerating electric head. On the bridge deck, the guest/captain's upper cabin offers a double berth, a cedar lined closet, a Wi-Fi booster, windows throughout for rapid response in an emergency, ample storage drawers, a bedside table, and independent 18000 BTU Dometic reverse cycle heating and air conditioning. The bridge deck day head, serving as the captain's ensuite, is finished with a shower featuring an upgraded glass shower door, a Tecma head, and a sink with granite countertops. Below, the crew/laundry cabin transforms to suit the mission: a fold out mattress is stored in a protective bag when not in use, and an additional roll out Ley cloth hammock berth expands capacity to accommodate an extra two guests. A Motorola intercom phone, Dometic reverse cycle climate controller, bedside table with 110 V outlets, and a reading light enhance daily comfort. The utility fit includes a sink with granite counter and mirror, a cedar lined closet with abundant drawer and cupboard stowage, and an upgraded Perlick HP24FO4A 00 SRFLR commercial grade deep freezer (SN: 2108230017B). A stainless steel workbench lifts to reveal custom shelving that secures spare parts underway, all set on robust Lonseal (Loncoin) flooring. Laundry is handled by an ASKO Butterfly Drying vented dryer T208V.W.U (SN: 94530133)

and an ASKO Quattro Construction 1400RPM washing machine W2084.W.U (SN: 95130160).

Accommodations

The master cabin is a private retreat, climate controlled by a 16000 BTU Dometic reverse cycle system and appointed with a 42 inch Sony TV, a Furuno multi function display, and a Furuno vertical remote control for navigation that can be used when displaying data on the cabin TV. A Motorola intercom phone keeps you connected, while a mirror crowns the dresser with upgraded larger storage drawers for extended cruise practicality. In the master ensuite, a granite countertop with sink, a shower with seat and custom teak grate, and a Tecma macerating electric head deliver yacht class comfort. The VIP cabin greets guests with a cedar lined closet, bedside USB charging outlets, eight opening portholes, and an emergency escape ladder, plus a Sony 42 inch Smart TV paired to a Klipsch Reference sound bar for immersive entertainment. The VIP ensuite, which also serves as the main deck day head, features a granite countertop with sink, a shower with seat and custom teak grate, and a Tecma macerating electric head. On the bridge deck, the guest/captain's upper cabin offers a double berth, a cedar lined closet, a Wi-Fi booster, windows throughout for rapid response in an emergency, ample storage drawers, a bedside table, and independent 18000 BTU Dometic reverse cycle heating and air conditioning. The bridge deck day head, serving as the captain's ensuite, is finished with a shower featuring an upgraded glass shower door, a Tecma head, and a sink with granite countertops. Below, the crew/laundry cabin transforms to suit the mission: a fold out mattress is stored in a protective bag when not in use, and an additional roll out Ley cloth hammock berth expands capacity to accommodate an extra two guests. A Motorola intercom phone, Dometic reverse cycle climate controller, bedside table with 110 V outlets, and a reading light enhance daily comfort. The utility

fit includes a sink with granite counter and mirror, a cedar lined closet with abundant drawer and cupboard stowage, and an upgraded Perlick HP24FO4A 00 SRFLR commercial grade deep freezer (SN: 2108230017B). A stainless steel workbench lifts to reveal custom shelving that secures spare parts underway, all set on robust Lonseal (Loncoin) flooring. Laundry is handled by an ASKO Butterfly Drying vented dryer T208V.W.U (SN: 94530133) and an ASKO Quattro Construction 1400RPM washing machine W2084.W.U (SN: 95130160).

Mechanical spaces

Purpose built mechanical spaces showcase serviceability and redundancy. In the engine room, an oil pump manifolded to both generators, both engines, and both transmissions streamlines oil changes. Fuel quality is guarded by Racor filters for both generators and both engines plus additional Racor filtration that polishes fuel from the four main tanks to the day tank and wing engine tanks, ensuring pristine supply to every machine. Tools live in a five drawer and one additional compartment Craftsman tool chest, mounted with racing car clips so it is always secure yet easily removable if needed. Fire protection is provided by a Sea Fire HFC227ea fixed system with annual service completed. The main engine—keel cooled to stay composed across the rpm range even in the warm waters of the Caribbean—is a John Deere 325 hp 6090AFM85 9.0 L 3072RG (SN: RG6090L136952). The drivetrain comprises a ZF ZFW325 – 3214003003 transmission with 3.958 ratio (SN: 20374424), a PSS dripless shaft seal, a Spurs line cutter on the shaft, and upgraded silicone engine hoses secured with tight seal clamps. The wing engine is a John Deere 100 hp 4045TFM85 (SN: PE4045N025638) in a V drive configuration with a ZF ZF68IV – 3312003210 transmission, 2.477 – 2.528 ratio (SN: 20326956). It features a PYI dripless shaft seal with an added flow meter to keep the seal cool at all times and added shut off valves for easy cleaning, a PSS dripless

shaft seal, and a folding propeller to minimize drag when not in use. Ship's power comes from a Northern Lights M844LW3.3G 20 kW generator with Shibaura block (Feb/2020 mfd) (SN: 8442 58137) showing 1290 hrs. In the lazarette, a Northern Lights M773LW3.3G 9 kW night generator with Shibaura block (Jan/2020 mfd) (SN: 7732 58458) shows 900 hrs. The space also houses a WiseNet camera facing the steering gear, four fishing rod holders, a Victron Energy Skylla I 24 V 100 amp battery charger, an Out Back Power inverter, dedicated dive bottle storage, a Bauer Junior dive compressor, and LifeLine batteries. Forward, the forepeak—accessed via the deck in the VIP stateroom, with a ball mounted on the hatch lock to prevent snags—organizes critical systems. Custom acrylic shelving with bungee and carbon fiber rods secures water filters. Water making and polishing are handled by a Dometic SeaXchange seawater reverse osmosis water maker with SpotZero fresh water reverse osmosis filtration XZII; the vessel also features a remineralization system to ensure clean drinking water. Redundancy adds an additional Dometic SeaXchange seawater reverse osmosis water maker rated 24.6 gal/hr, SXII600Z (SN: 080820188). Final sterilization is via a Mighty Pure Ultra Violet water purifier MP36C. Stainless steel hot and cold water manifolds with PEX hoses enable quick, simple isolation. Pressure and flow come from two Mach5 water pumps, hot water from a Torrid MVW402IX 40 gal water heater, and bow control from a Rexroth 20W15 bow thruster (SN: 15909110).

Mechanical spaces

Purpose built mechanical spaces showcase serviceability and redundancy. In the engine room, an oil pump manifolded to both generators, both engines, and both transmissions streamlines oil changes. Fuel quality is guarded by Racor filters for both generators and both engines plus additional Racor filtration that polishes fuel from the four main tanks to the day tank and wing engine tanks, ensuring pristine supply to every machine. Tools live in a

five drawer and one additional compartment Craftsman tool chest, mounted with racing car clips so it is always secure yet easily removable if needed. Fire protection is provided by a Sea Fire HFC227ea fixed system with annual service completed. The main engine—keel cooled to stay composed across the rpm range even in the warm waters of the Caribbean—is a John Deere 325 hp 6090AFM85 9.0 L 3072RG (SN: RG6090L136952). The drivetrain comprises a ZF ZFW325 – 3214003003 transmission with 3.958 ratio (SN: 20374424), a PSS dripless shaft seal, a Spurs line cutter on the shaft, and upgraded silicone engine hoses secured with tight seal clamps. The wing engine is a John Deere 100 hp 4045TFM85 (SN: PE4045N025638) in a V drive configuration with a ZF ZF68IV – 3312003210 transmission, 2.477 – 2.528 ratio (SN: 20326956). It features a PYI dripless shaft seal with an added flow meter to keep the seal cool at all times and added shut off valves for easy cleaning, a PSS dripless shaft seal, and a folding propeller to minimize drag when not in use. Ship's power comes from a Northern Lights M844LW3.3G 20 kW generator with Shibaura block (Feb/2020 mfd) (SN: 8442 58137) showing 1290 hrs. In the lazarette, a Northern Lights M773LW3.3G 9 kW night generator with Shibaura block (Jan/2020 mfd) (SN: 7732 58458) shows 900 hrs. The space also houses a WiseNet camera facing the steering gear, four fishing rod holders, a Victron Energy Skylla I 24 V 100 amp battery charger, an Out Back Power inverter, dedicated dive bottle storage, a Bauer Junior dive compressor, and LifeLine batteries. Forward, the forepeak—accessed via the deck in the VIP stateroom, with a ball mounted on the hatch lock to prevent snags—organizes critical systems. Custom acrylic shelving with bungee and carbon fiber rods secures water filters. Water making and polishing are handled by a Dometic SeaXchange seawater reverse osmosis water maker with SpotZero fresh water reverse osmosis filtration XZII; the vessel also features a remineralization system to ensure clean drinking water. Redundancy adds an additional Dometic SeaXchange seawater reverse osmosis water maker rated 24.6 gal/hr, SXII600Z (SN: 080820188). Final sterilization is via a Mighty Pure Ultra

Violet water purifier MP36C. Stainless steel hot and cold water manifolds with PEX hoses enable quick, simple isolation. Pressure and flow come from two Mach5 water pumps, hot water from a Torrid MVW402IX 40 gal water heater, and bow control from a Rexroth 20W15 bow thruster (SN: 15909110).

Mechanical disclaimer

Engine and generator hours are stated as of the date of the original listing and reflect information provided to the listing broker by the owner and/or actual readings of the engine hour meters. The broker cannot guarantee the true hours. It is the responsibility of the purchaser and/or the purchaser's agent to verify engine hours, warranties (express or implied), major overhauls, and all other representations noted on the listing brochure.

Mechanical disclaimer

Engine and generator hours are stated as of the date of the original listing and reflect information provided to the listing broker by the owner and/or actual readings of the engine hour meters. The broker cannot guarantee the true hours. It is the responsibility of the purchaser and/or the purchaser's agent to verify engine hours, warranties (express or implied), major overhauls, and all other representations noted on the listing brochure.

Disclaimer

The details of this yacht are offered in good faith but cannot guarantee the accuracy of this information nor warrant the condition of the boat for sale. This yacht is offered subject to prior sale, price change, or withdrawal from the market without notice. It is presented as a convenience to clients and is not intended to convey direct representation of a specific yacht for sale.

Disclaimer

The details of this yacht are offered in good faith but cannot guarantee the accuracy of this information nor warrant the condition of the boat for sale. This yacht is offered subject to prior sale, price change, or withdrawal from the market without notice. It is presented as a convenience to clients and is not intended to convey direct representation of a specific yacht for sale.

CONTACTS

Shestakov Yacht Sales is a brokerage company specializing in the sale and service of yachts worldwide. The company offers services for buying and selling both new and used motor yachts, sailing vessels, and luxury superyachts. They also provide yacht registration, insurance, technical maintenance, crew selection, and charter organization services across the U.S., Canada, Latin America, the Caribbean, and the Bahamas.

The founder and lead broker of the company is Andrey Shestakov, a licensed and certified expert with extensive experience in marine engineering and shipbuilding.

The company has an extensive network of partnerships with major yacht manufacturers worldwide and provides services in multiple languages, including Russian, Ukrainian, Spanish, and English. The office is in Dania Beach, Florida, USA.

For more information and to view available yachts, you can visit the company's official website: <https://shestakovyachtsales.com>

Contact details

Phone: +1(954)274-4435

Email: andrey@shestakovyachtsales.com

Address



1380 Weeping Willow Way, Hollywood,
Florida 33019