

PRESTIGE 60 - BENETEAU



Builder: [Beneteau](#)

LOA: 64' 0" (19.50 m)

Year Built: 2011

Beam: 17' 0" (5.20 m)

Model: Prestige 60

Min Draft: 4' 4" (1.32 m)

Price: \$745,130.85 USD Subject to change.

Max Draft: 4' 4" (1.32 m)

[See full listing on our website](#)

Location: Mugla, Turkey

Cruising Speed: 18 Knots (20.71 MPH)

Max Speed: 25 Knots (28.77 MPH)

TABLE OF CONTENTS

OVERVIEW	3
SPECIFICATIONS	4
Basic Information	4
Dimensions	4
Speed, Capacities and Weight	4
Accommodations	5
Hull and Deck Information	5
Engine Information	5
GALLERY	6
DETAILED DESCRIPTION	13
CONTACTS	15

OVERVIEW

The 2011 Prestige 60 is presented in immaculate, turn key condition—an elegant, ready to go luxury motor yacht that marries refined style with robust dependability and a full, thoughtful specification. Privately owned and continuously tended by a permanent crew, she has been serviced annually without compromise and is offered to an exceptional standard, representing superb value for the discerning purchaser. Twin Volvo IPS pod drives provide smooth, quiet, and efficient propulsion with effortless maneuvering and precise control. A luminous full beam salon, framed by panoramic glazing, flows seamlessly aft to a generous cockpit, while the expansive flybridge creates an inviting open air space for relaxation and entertaining. The galley is well appointed, the layout carefully considered, and storage plentiful, making extended cruising both practical and pleasurable. Accommodation comprises a spacious three cabin arrangement with a separate crew cabin, delivering refined quarters for family and guests. Regularly maintained and genuinely ready to cruise immediately, this flybridge motor yacht combines contemporary design, comfort, and capability, and stands out as one of the most compelling 2011 Prestige 60 offerings on the market.

SPECIFICATIONS

Basic Information

Category:
Motor yachts

Year Built:
2011

Model Year:
2011

Country:
Turkey

Dimensions

LOA:
64' 0" (19.50 m)

Beam:
17' 0" (5.20 m)

Min Draft:
4' 4" (1.32 m)

Max Draft:
4' 4" (1.32 m)

Speed, Capacities and Weight

Cruise Speed:
18 Knots (20.71 MPH)

Water Capacity:
211.34 Gallons

Max Speed:
25 Knots (28.77 MPH)

Fuel Capacity:
739.68 Gallons

Accommodations

Sleeps:

6

Crew Berths:

2

Total Heads:

3

Hull and Deck Information

Hull Material:

Fiberglass and Plastic Yachts

Hull Designer:

Michael Peters Yacht Design

Deck Material:

GRP

Interior Designer:

Garroni Design

Hull Configuration:

Deep Vee

Engine Information

Engines:

2

Engine Type:

Inboard

Manufacturer:

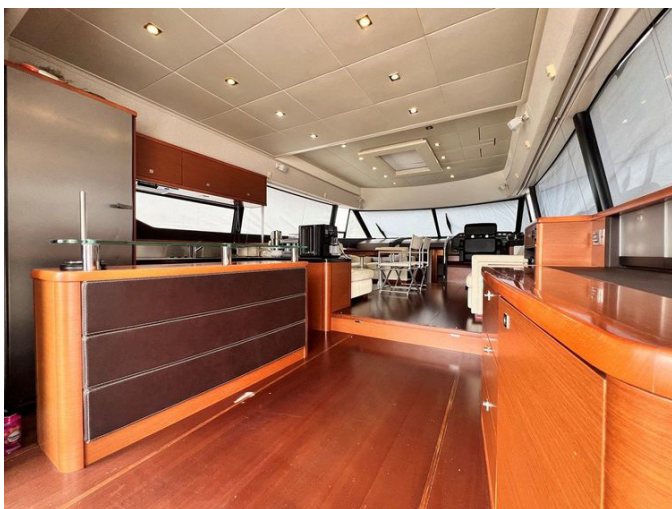
Volvo Penta

Fuel Type:

Diesel

GALLERY















DETAILED DESCRIPTION

Description

This elegant Prestige 60, built in 2011, is presented in meticulous condition following continuous care by a full time professional crew and uncompromising annual maintenance. Conceived by Garroni Design in collaboration with Michael Peters, she marries timeless aesthetics with assured seakeeping: twin Volvo IPS pod drives and a deep V planing hull deliver effortless handling, strong acceleration and admirable fuel efficiency. Flooded with natural light, the interior offers three generous cabins, a fully equipped galley and a panoramic saloon framed by floor to ceiling windows, while the expansive flybridge and inviting aft cockpit create convivial areas for entertaining guests or quietly mooring at anchor. A genuine turn key yacht, this Prestige 60 is immaculately maintained, stylishly appointed and ready for immediate cruising — a superb opportunity not to be missed.

Specification - standard and optional exrtas

Designed for confident passagemaking and refined onboard living, this yacht is comprehensively appointed with a 230 l black water tank and a 120 l grey water tank, plus a dedicated crew cabin with one berth and its own toilet and shower. Ground tackle is robust, featuring a 165 m, 10 mm galvanised chain with anchor, an electric windlass, and a chain counter, while trim tabs, an engine monitoring system, and both a compass and depth sounder add assurance under way. The Aquatec watermaker delivers 180 l/h, complemented by a fresh water system, electric toilets, and a water heater for true self sufficiency. Power management is equally strong with a Köhler 20 kW generator, a battery charger, and LED interior lighting with dimmers. Dockside manoeuvring is effortless thanks to Sidepower bow and stern thrusters, and

navigation comes courtesy of a full Raymarine suite including GPS/chartplotter/radar, autopilot, and VHF radio. Leisure and deck amenities abound: a large hydraulic swim platform simplifies tender handling and offers superb sea access; there are generous aft sunbed and forward sunpad areas; the teak cockpit floor adds warmth underfoot; and an electric gangway (passerelle) ensures elegant boarding. A garage accommodates the tender and water toys, and the package includes a Zodiac tender powered by a 40 hp Yamaha outboard. Entertaining is enhanced by a full audio system with cockpit speakers and 27" TVs in the saloon and in the cockpit, while the galley is equipped with a refrigerator, freezer, and microwave oven. For climate comfort in all conditions, tropical spec air conditioning completes the specification.

Description and accommodation

Comfortably appointed for family cruising and stylish entertaining, the accommodation comprises three cabins: a full beam owner's master with a double berth, a VIP double, and a twin, each thoughtfully designed with its own shower cubicle and WC for complete privacy. A spacious, independent crew cabin further enhances versatility on longer passages. The majestic saloon sets the tone for relaxed living, featuring a 40" retractable ceiling mounted TV, a home cinema BOSE DVD 200, Wi-Fi, three TVs in total, and a refined Hi-Fi MP3 sound system with Bluetooth for immersive audio across the yacht. Luxuriously carpeted throughout, the interior benefits from reversible air conditioning with independent climate control, providing precise heating and cooling for every cabin and each convivial area. The galley is fully equipped for extended stays aboard, offering a refrigerator, freezer, dishwasher, microwave oven, and ice maker to ensure effortless hospitality.

CONTACTS

Shestakov Yacht Sales is a brokerage company specializing in the sale and service of yachts worldwide. The company offers services for buying and selling both new and used motor yachts, sailing vessels, and luxury superyachts. They also provide yacht registration, insurance, technical maintenance, crew selection, and charter organization services across the U.S., Canada, Latin America, the Caribbean, and the Bahamas.

The founder and lead broker of the company is Andrey Shestakov, a licensed and certified expert with extensive experience in marine engineering and shipbuilding.

The company has an extensive network of partnerships with major yacht manufacturers worldwide and provides services in multiple languages, including Russian, Ukrainian, Spanish, and English. The office is in Dania Beach, Florida, USA.

For more information and to view available yachts, you can visit the company's official website: <https://shestakovyachtsales.com>

Contact details

Phone: +1(954)274-4435

Email: andrey@shestakovyachtsales.com

Address



1380 Weeping Willow Way, Hollywood,
Florida 33019